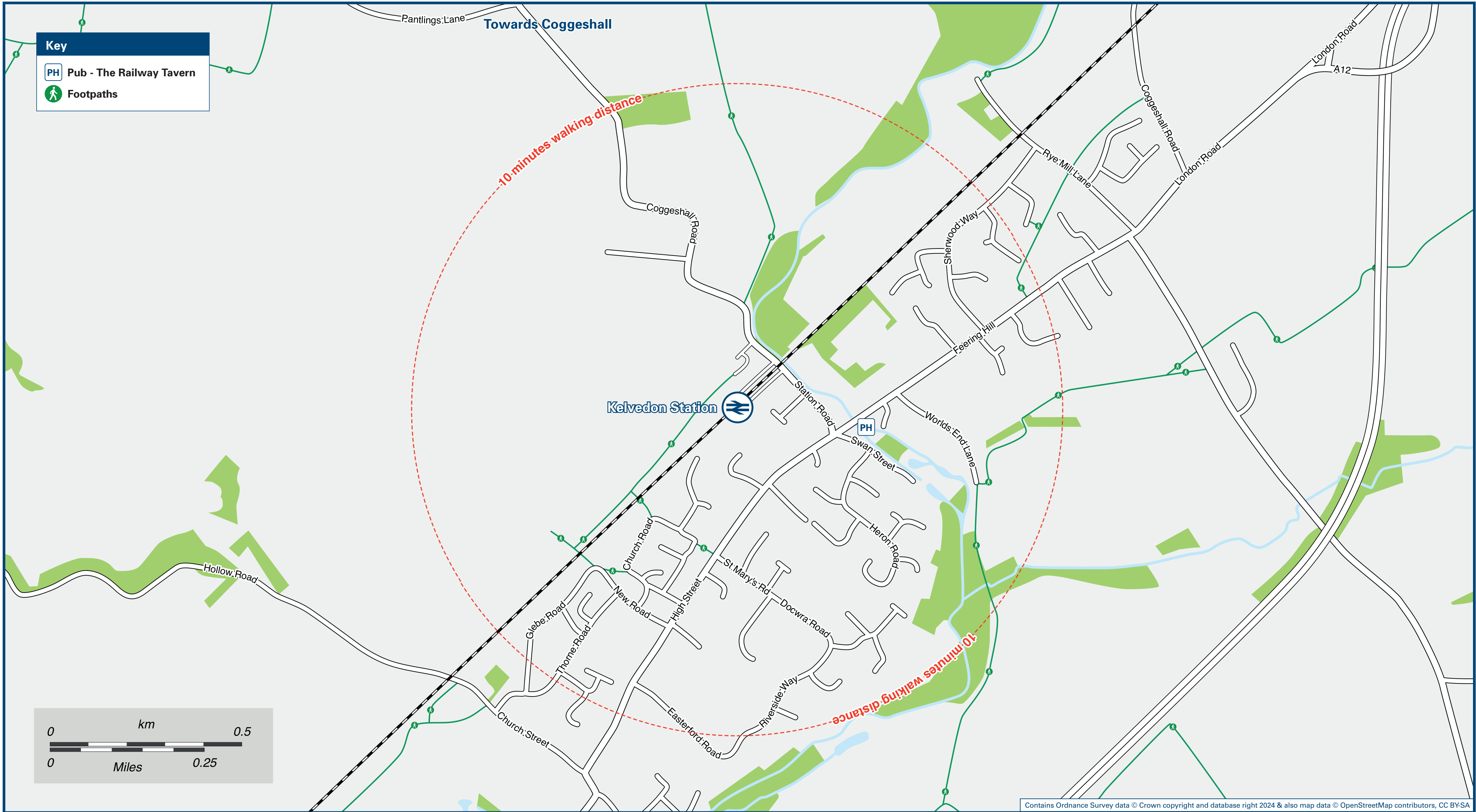




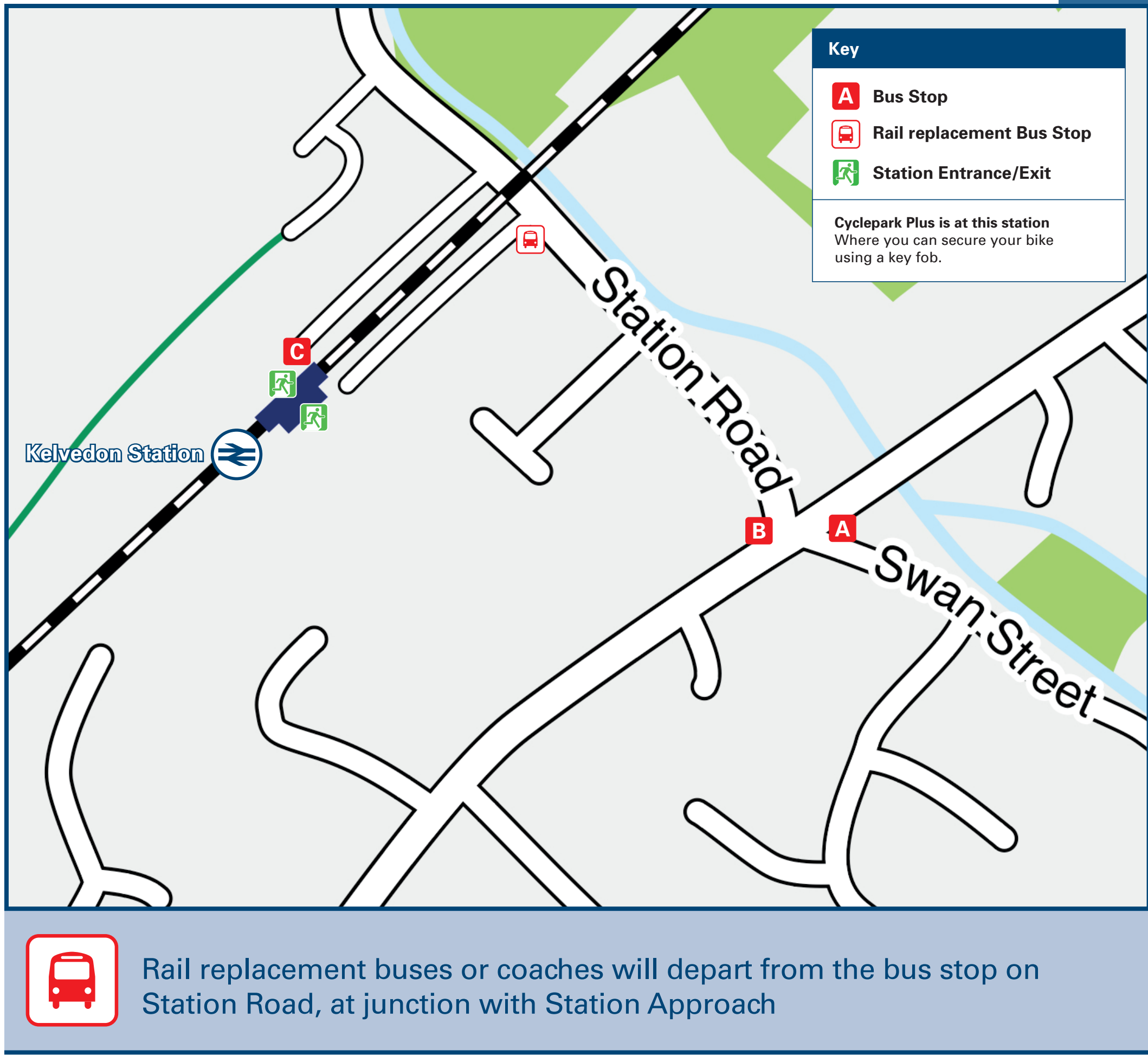
Kelvedon Station

Onward Travel Information

Local area map



Buses



Main destinations by bus

(Data correct at July 2024)

DESTINATION	BUS ROUTES	BUS STOP
Boreham	71, 371, 372	A
Chelmsford	71, 371, 372	A
Coggeshall (Market Hill)	COG1	C
Colchester	71, 371, 372	B
Copford	71, 371, 372	B
Feering	71, 91, 371, 372	B
Hatfield Peverel	71, 371, 372	A
Inworth	91	B
Lexden	71, 371, 372	B
Marks Tey	71, 371, 372	B
Springfield (Sainsbury's)	71, 371, 372	A
Stanway	71, 371, 372	B
Tiptree	91	B
Tollesbury (The Square)	91	B
Tolleshunt D'Arcy	91	B
Tolleshunt Knights	91	B
Witham	71, 91, 371, 372	A

Notes

Bus routes 71 and 91 operate Mondays to Saturdays.
Bus route 371 operates daily.
Bus route 372 operates a limited service Mondays to Fridays only.
Bus route COG1 operates early morning and evening peak journeys Mondays to Fridays only.
For bus times and further information contact Traveline on 0871 200 22 33 or First Essex (for bus routes 71, 371 & 372) call 0345 646 0707; Coggeshall Community Bus (for bus route COG1) call 01376 562 090 or Hedingham & Chambers (for bus route 91) call 03301 020 801.
Direct trains operate to this destination from this station.

Taxis

Kelvedon station has no taxi rank or cab office. Advance booking is essential, please consider using the following local operators: (Inclusion of this number doesn't represent any endorsement of the taxi firm)

John's Taxi Services
07762 437 893

Further information about all onward travel

Local Cycle Info	National Cycle Info	Bus Times	NextBuses	PlusBus
braintree.gov.uk For more information about cycle routes.	sustrans.org.uk Sustrans is the UK's leading sustainable transport charity.	See timetable displays at bus stops. traveline public transport info www.traveline.info 0871 200 22 33 calls cost 15p per minute plus your phone company's access charge	Find the bus times for your stop. Search for a bus stop by entering a postcode, street & town or a stop name & town.	plusbus.info A discount price 'bus pass' that you buy with your train ticket. It gives you unlimited bus travel around your chosen town, on participating buses.

National Rail Enquiries

Online	NRE App	Social Media	Alert Me	Contact Centre	PlusBike
nationalrail.co.uk	Free National Rail Enquiries app for iOS and Android	facebook.com/nationalrailenq @nationalrailenq	You can sign up to Alert Me messages on the National Rail Enquiries website where you can receive train and platform notifications directly to your smart phone. nationalrail.co.uk/alertme	03457 48 49 50 Calls cost no more than calls to geographic numbers (01 or 02) and may be recorded.	nationalrail.co.uk/plusbike For more information.

greateranglia



National Rail
Britain's train companies working together



This poster shows details of popular destinations and main, frequent bus routes. Additional services may run, so please check with Traveline or see posters at local bus stops. Whilst considerable care has been taken to ensure the information contained on this poster is correct and accurate, National Rail cannot accept responsibility for any loss or inconvenience caused by any errors or omissions, or for loss, damage, injury or inconvenience relating to the cancellation, alteration, delay or diversion of a service. For any feedback, please e-mail comments@onwardtravelposters.com

Scan this code with your mobile for full station information.