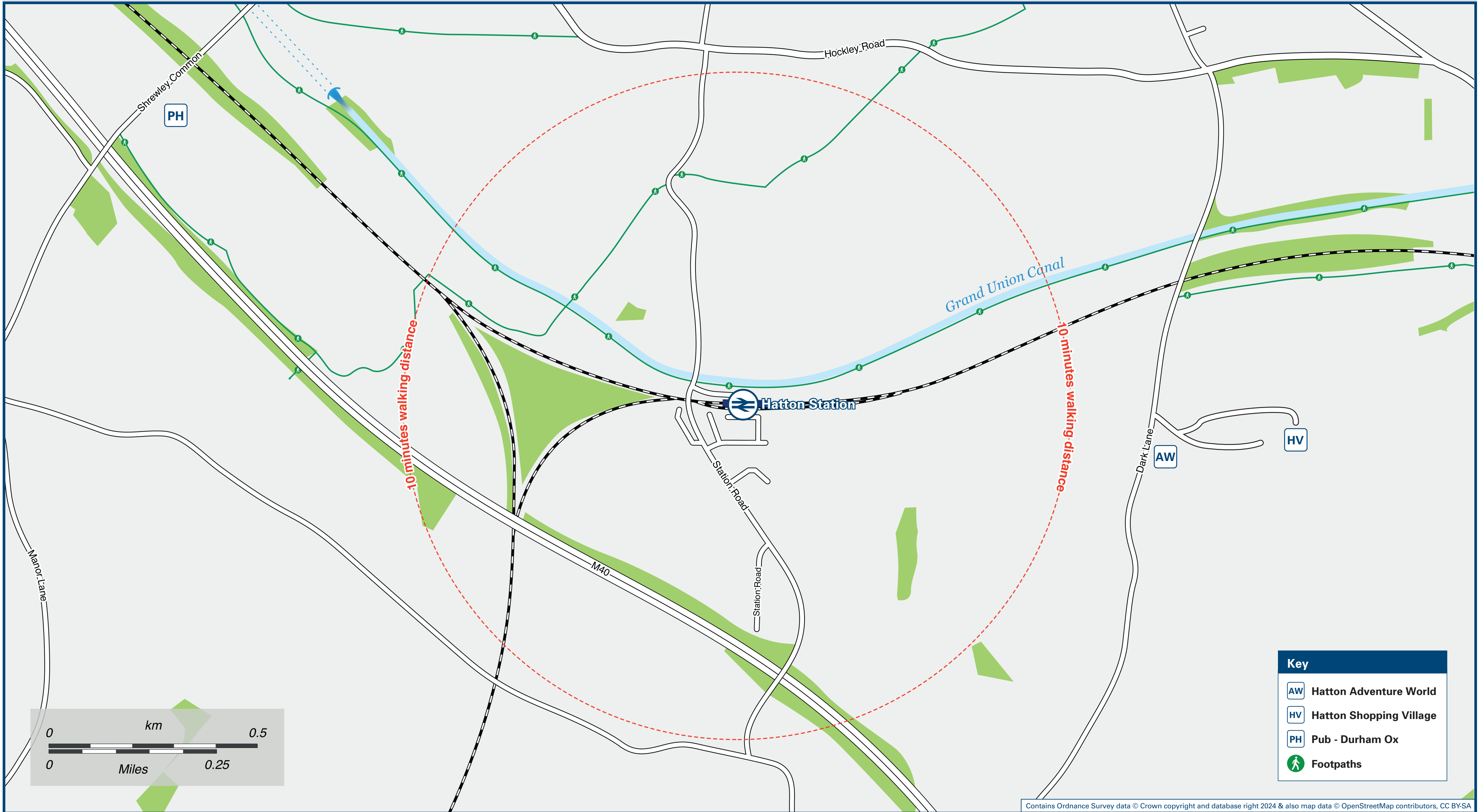




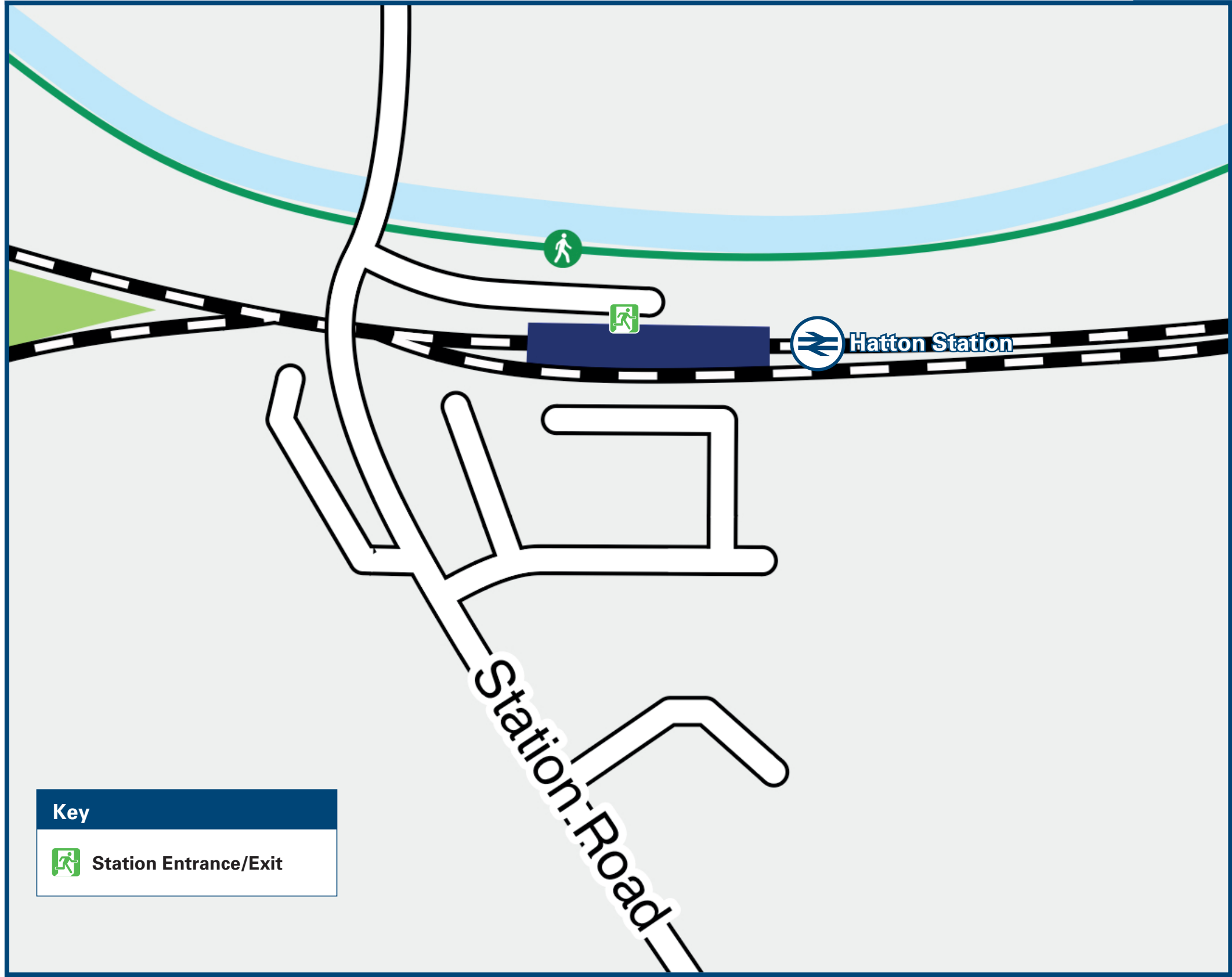
Hatton (Warks) Station

Onward Travel Information

Local area map



Station Map



This station is served served by mini-buses in the event that rail replacement road transport is arranged, due to difficult road access. Mini-buses are unlikely to be fully accessible to customers with mobility impairments. Please use the Passenger Help Point on the station to arrange for a taxi to the nearest served Chiltern Railways station in the event that the booked mini-bus is inaccessible.

Information

(Data correct at May 2025)



THERE ARE NO REGULAR BUS SERVICES CALLING AT, OR NEAR HATTON RAILWAY STATION.

Hatton Station has no taxi rank or cab office. Advance booking is essential, please consider using the following local operators: (Inclusion of this number doesn't represent any endorsement of the taxi firm)

Warwick Taxis
01926 499 966

Taxi United Warwick
01926 888 887

Red 1 Cars
07930 337 249

Further information about all onward travel

Local Cycle Info	National Cycle Info	Bus Times	NextBuses	PlusBus
warwickshire.gov.uk For more information about cycle routes.	sustrans.org.uk Sustrans is the UK's leading sustainable transport charity.	See timetable displays at bus stops. www.traveline.info 0871 200 22 33 calls cost 10p per minute plus your phone company's access charge	Find the bus times for your stop. Search for a bus stop by entering a postcode, street & town or a stop name & town.	plusbus.info A discount price 'bus pass' that you buy with your train ticket. It gives you unlimited bus travel around your chosen town, on participating buses.

National Rail Enquiries

Online	NRE App	Social Media	Alert Me	Contact Centre	PlusBike
nationalrail.co.uk	Free National Rail Enquiries app for iOS and Android	facebook.com/nationalrailenq @nationalrailenq	You can sign up to Alert Me messages on the National Rail Enquiries website where you can receive train and platform notifications directly to your smart phone. nationalrail.co.uk/alertme	03457 48 49 50 Calls cost no more than calls to geographic numbers (01 or 02) and may be recorded.	nationalrail.co.uk/plusbike For more information.

Chilternrailways



National Rail
Britain's train companies working together



Whilst considerable care has been taken to ensure the information contained on this poster is correct and accurate, National Rail cannot accept responsibility for any loss or inconvenience caused by any errors or omissions, or for loss, damage, injury or inconvenience caused. For any feedback, please e-mail comments@onwardtravelposters.com

Scan this code with your mobile for full station information.