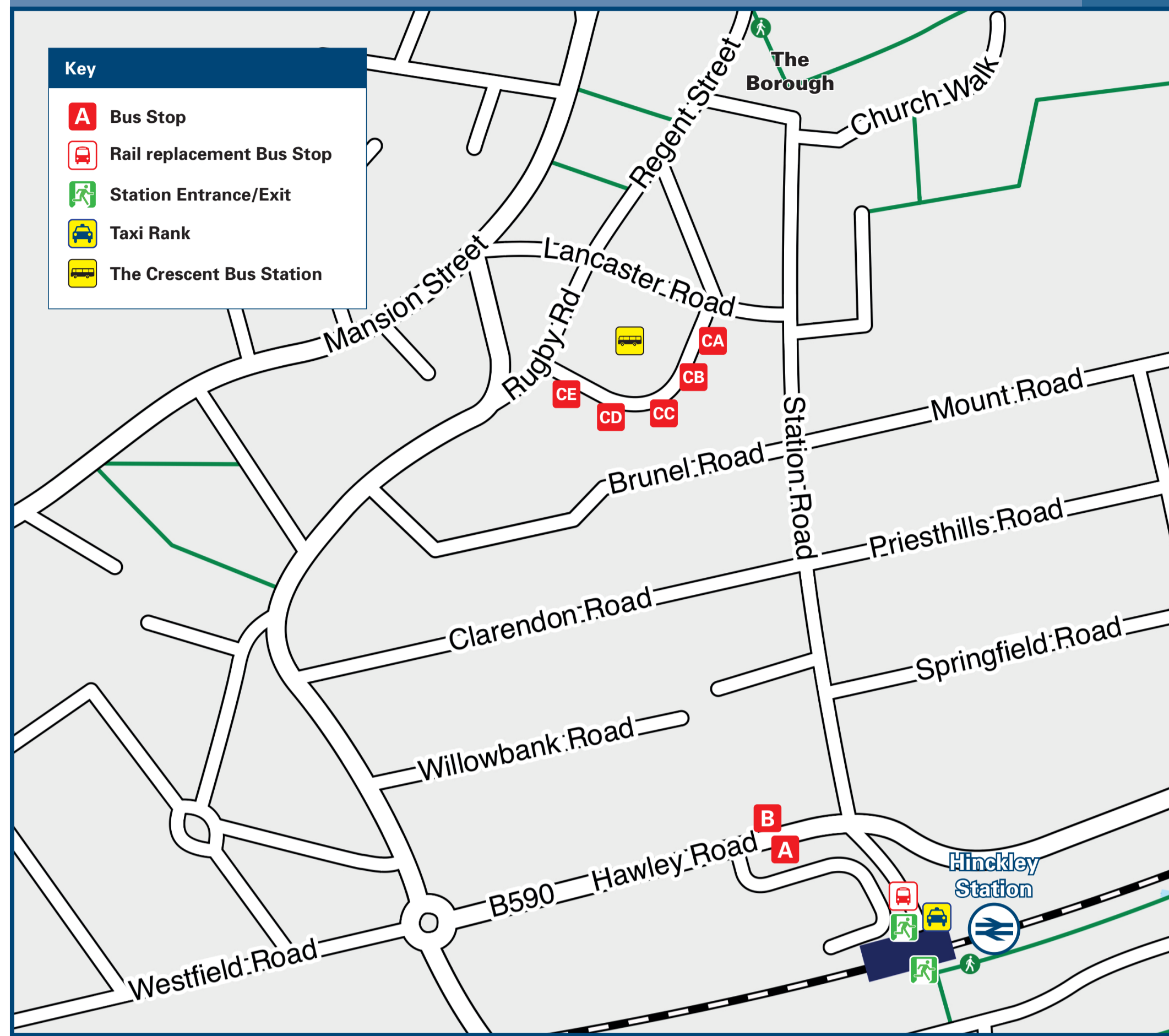




Hinckley Station

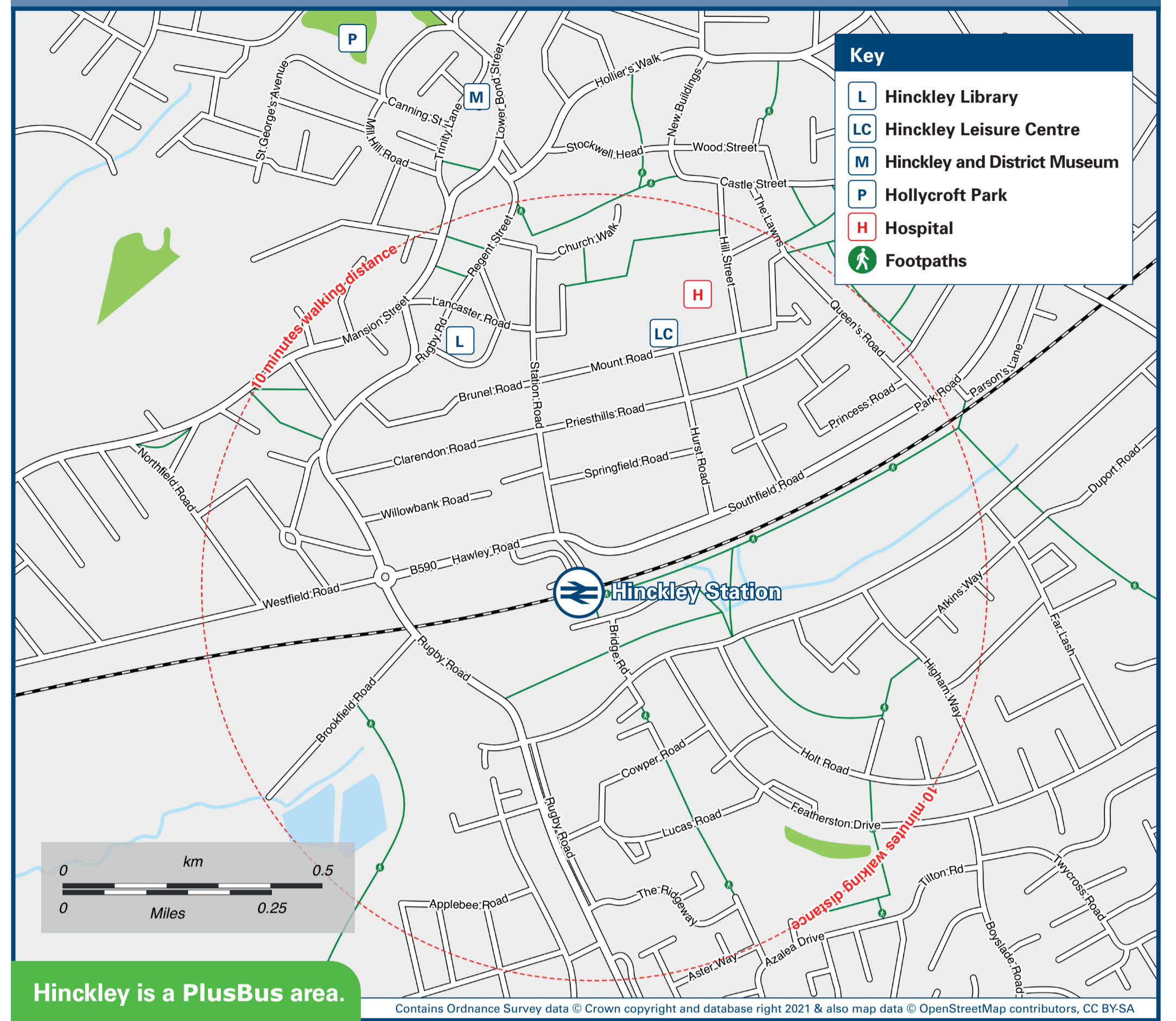
Onward Travel Information

Buses and Taxis



Rail replacement buses and coaches depart from outside the front of the station.

Local area map



Hinckley is a PlusBus area.



PlusBus is a discount price 'bus pass' that you buy with your train ticket. It gives you unlimited bus travel around your chosen town, on participating buses. Visit www.plusbus.info

Main destinations by bus

(Data correct at May 2023)



DESTINATION	BUS ROUTES	BUS STOP
● Barwell	2	CA
	148, 158	CE
● Burbage (Co-operative Store, Tilton Road)	6, 6A, 7	A, CB
	X6	A, CB
● Burbage (The Sycamores, Windsor Street)	6, 6A, 7	A
	6, 6A, 7, 8	CB
Claybrooke Magna	8	CB
Coventry	X6	A, CB
	148	CD
● Dodwells Road	7	B, CC
● Earl Shilton	1, 148, 158	CE
Fosse Park	X6	B, CE
Higham-on-the-Hill	6, 6A	B, CC

DESTINATION	BUS ROUTES	BUS STOP
● Hinckley & Bosworth Community Hospital	148, 158	CE
● Hinckley Park	8	CB
● Hollycroft (Lyneham Close)	6, 6A, 7	B, CC
● Hollycroft Grange (Normandy Way)	11	CE
● Lash Hill (Burbage Road, Sapcote Road)	8	CB
	X6	B
Leicester City Centre	148, 158, X6	CE
	X6	B
Leicester Forest East	148, 158	CE
Lutterworth	8	CB
Magna Park	8	CB
Nuneaton	6, 6A, 7	B, CC
	148, 158	CD

DESTINATION	BUS ROUTES	BUS STOP
Stoke Golding	6, 6A	B, CC
● Town Centre (The Crescent Bus Station)	10 - 15 minutes walk from this station (see maps)	
	6, 6A, 7, X6	B
● Trent Road	11	CE
Ullesthorpe	8	CB
Walsgrave University Hospital	X6*	A, CB
Wyken Green	X6	A, CB
● Wykin Road	6, 6A	B

Notes

- PlusBus destination, please see below for details.
- Bus routes 1, 2, 6, 6A, 7 and 8 operate Mondays to Saturdays. No service on Sundays and Bank Holidays.
- Bus routes 148, 158 and X6 operate daily.
- For bus times and other bus service information, please contact Traveline on 0871 200 22 33.
- * Limited early morning and evening buses only to Walsgrave University Hospital, please check the timetable.
- Change trains at Nuneaton for this destination.
- Direct trains operate to this destination from this station

Taxis

Hinckley station is served by a taxi rank or a cab office. Check availability before travelling, and pre-book if necessary. Please consider using the following local operators: (Inclusion of this number doesn't represent any endorsement of the taxi firm)

Station Taxis 01455 614 444

A1 Taxis 01455 615 161

Hinckley Taxis 01455 616 666

FOX connect

FoxConnect is a public on-demand bus service, connecting the rural areas of South West Leicestershire. You can book your journey through the mobile app or by phone on 0116 2165555. For further information please visit <https://www.foxconnect.co.uk/>

Search FoxConnect on your app store

Download on the App Store

GET IT ON Google Play

Further information about all onward travel

Local Cycle Info choosehowyoumove.co.uk For more information about cycle routes.	National Cycle Info sustrans.org.uk Sustrans is the UK's leading sustainable transport charity.	Bus Times See timetable displays at bus stops. www.traveline.info 0871 200 22 33 call cost 13p per minute plus your phone company's access charge	NextBuses Find the bus times for your stop. Search for a bus stop by entering a postcode, street & town or a stop name & town.	PlusBus plusbus.info A discount price 'bus pass' that you buy with your train ticket. It gives you unlimited bus travel around your chosen town, on participating buses.
---	---	--	---	---

National Rail Enquiries

Online nationalrail.co.uk	NRE App Free National Rail Enquiries app for iOS and Android	Social Media facebook.com/nationalrailenq @nationalrailenq	Alert Me You can sign up to Alert Me messages on the National Rail Enquiries website where you can receive train and platform notifications directly to your smart phone. nationalrail.co.uk/alertme	Contact Centre 03457 48 49 50 Calls cost no more than calls to geographic numbers (01 or 02) and may be recorded.	PlusBike nationalrail.co.uk/plusbike For more information.
---	--	---	---	--	--

EMR **National Rail**
Britain's train companies working together

This poster shows details of popular destinations and main, frequent bus routes. Additional services may run, so please check with Traveline or see posters at local bus stops. Whilst considerable care has been taken to ensure the information contained on this poster is correct and accurate, National Rail cannot accept responsibility for any loss or inconvenience caused by any errors or omissions, or for loss, damage, injury or inconvenience relating to the cancellation, alteration, delay or diversion of a service. For any feedback, please e-mail comments@onwardtravelposters.com

Scan this code with your mobile for full station information.