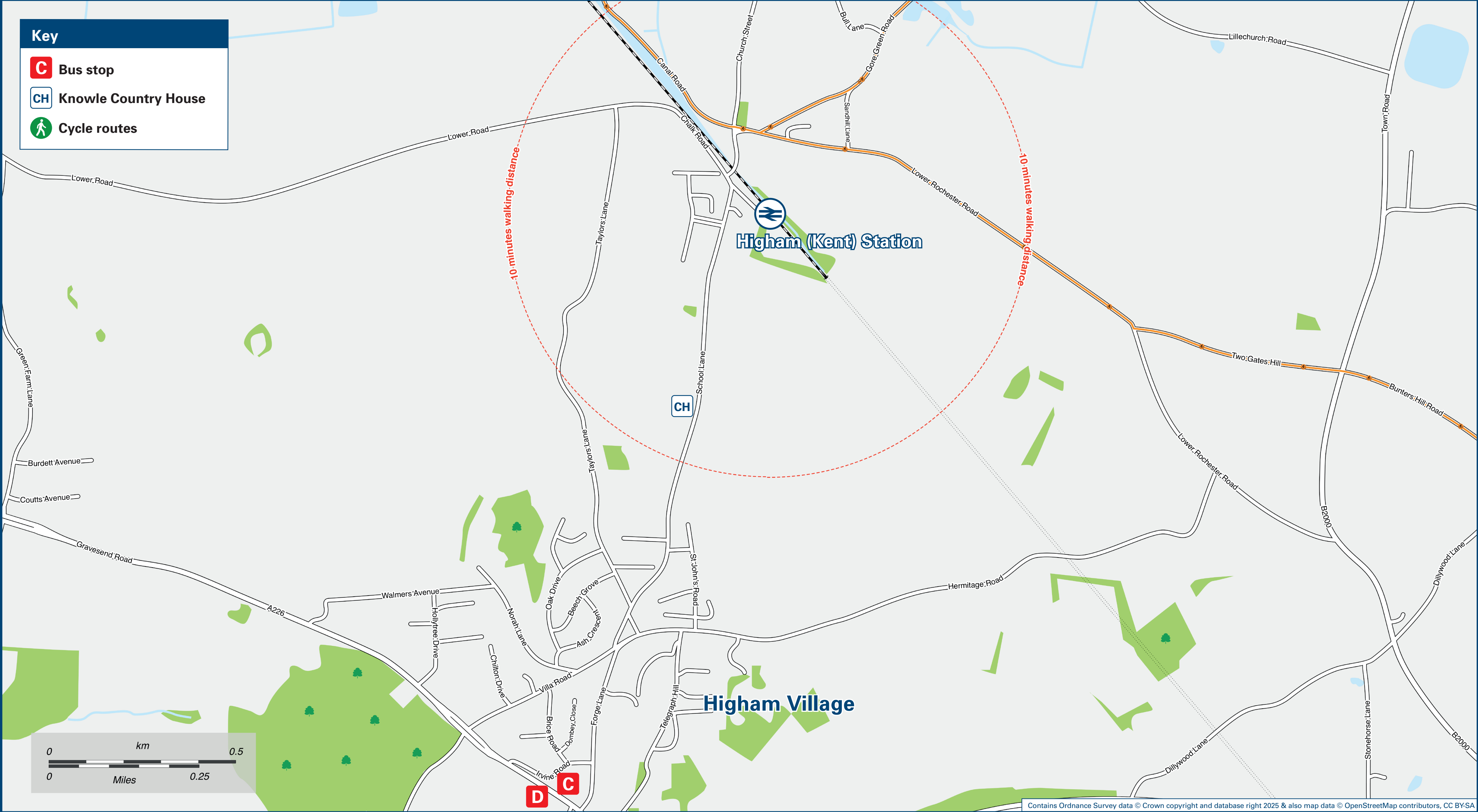




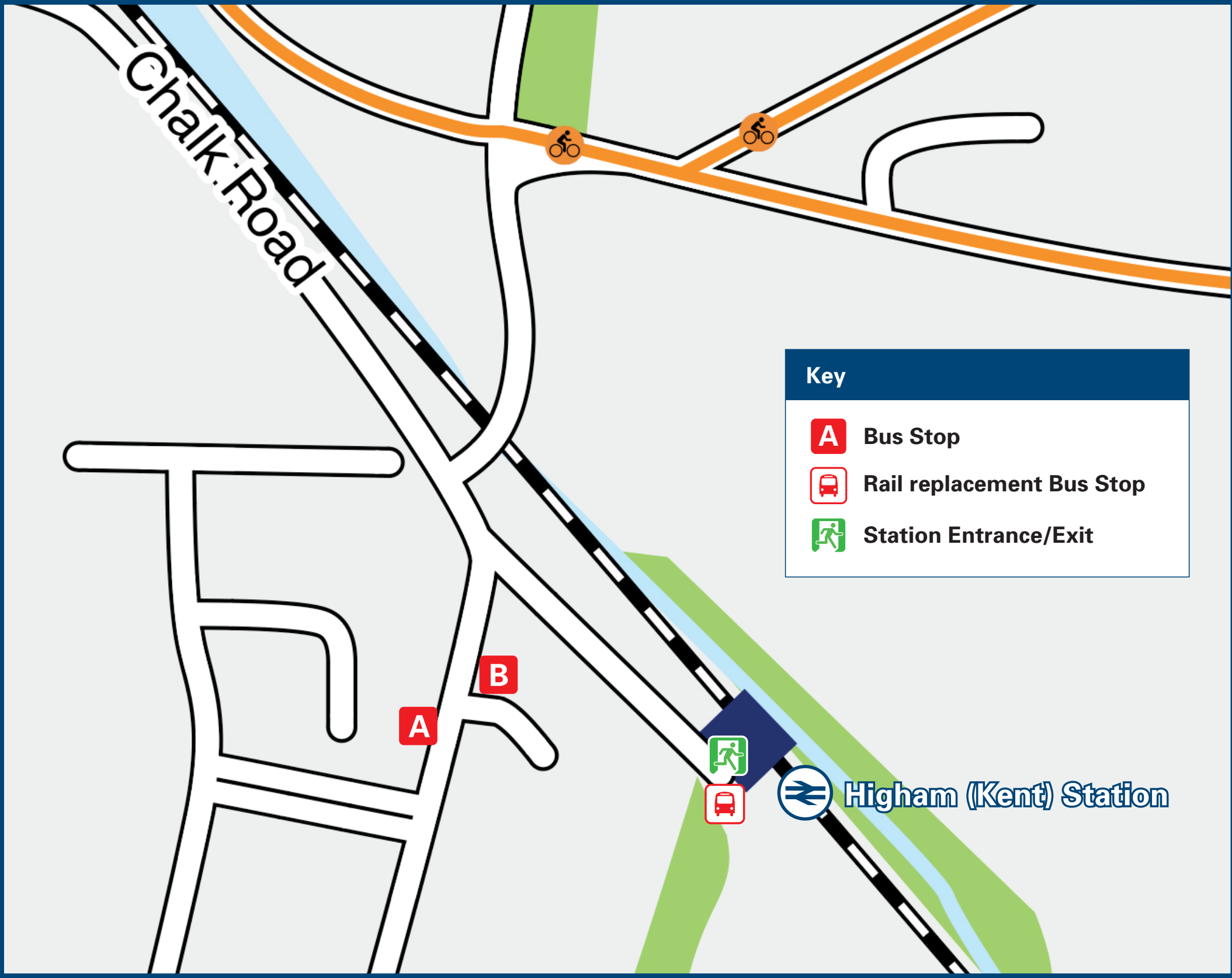
Higham Station

Onward Travel Information

Local area map



Buses



Rail replacement buses depart from outside of the Station (Platform 1 Side).

Main destinations by bus

(Data correct at August 2025)



DESTINATION	BUS ROUTES	BUS STOP
Chalk (Thong Lane)	417#	B
Cliffe (The Six Bells, for RSPB Cliffe Pools)	417#	A
Cliffe Woods (Primary School)	417#	A
Denton (St John's School)	417#	B
Gravesend (Railway Station)	417#	B
Higham Village (Forge Lane)	417#	B
Shorne (Crossroads)	417#	B
Shorne Woods Country Park	417#	B

Notes

Further bus services to Gravesend or Chatham are available from bus stops {C} and {D}, in Higham Village on the Gravesend Road near to Forge Lane, which is a 35-40 minutes walk from this station.
For bus times and days of operation please contact Traveline on www.traveline.info or call: 0871 200 22 33
 Direct trains operate to this destination from this Station.
Bus route 417 operates a limited daytime service on Mondays to Saturdays only. No evening, Sunday or Bank Holiday service.

Taxis

Higham (Kent) Station has no taxi or cab office. Advance booking is essential, please consider using the following operators: (Inclusion of this number doesn't represent any endorsement of the taxi firm)

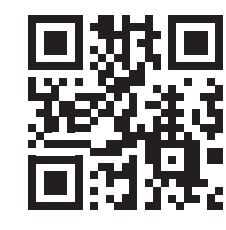
Strood Cabs
01634 710 001

Vokes Taxis
01634 222 222

Computer Cabs
01634 666 666

Further information about all onward travel

Local Cycle Info	National Cycle Info	Bus Times	PlusBus
gravesham.gov.uk For more information about cycle routes.	sustrans.org.uk Sustrans is the UK's leading sustainable transport charity.	See timetable displays at bus stops. www.traveline.info 0871 200 22 33 calls cost 15p per minute plus your phone company's access charge	 plusbus.info PlusBus is a discount price 'bus pass' that you buy with your train ticket. It gives you unlimited bus travel around your chosen town, on participating buses. Visit www.plusbus.info



National Rail Enquiries

Online	NRE App	Social Media	Alert Me	Contact Centre	PlusBike
nationalrail.co.uk	Free National Rail Enquiries app for iOS and Android	facebook.com/nationalrailenq @nationalrailenq	You can sign up to Alert Me messages on the National Rail Enquiries website where you can receive train and platform notifications directly to your smart phone. nationalrail.co.uk/alertme	03457 48 49 50 Calls cost no more than calls to geographic numbers (01 or 02) and may be recorded.	 nationalrail.co.uk/plusbike For more information.

southeastern



National Rail
Britain's train companies working together

