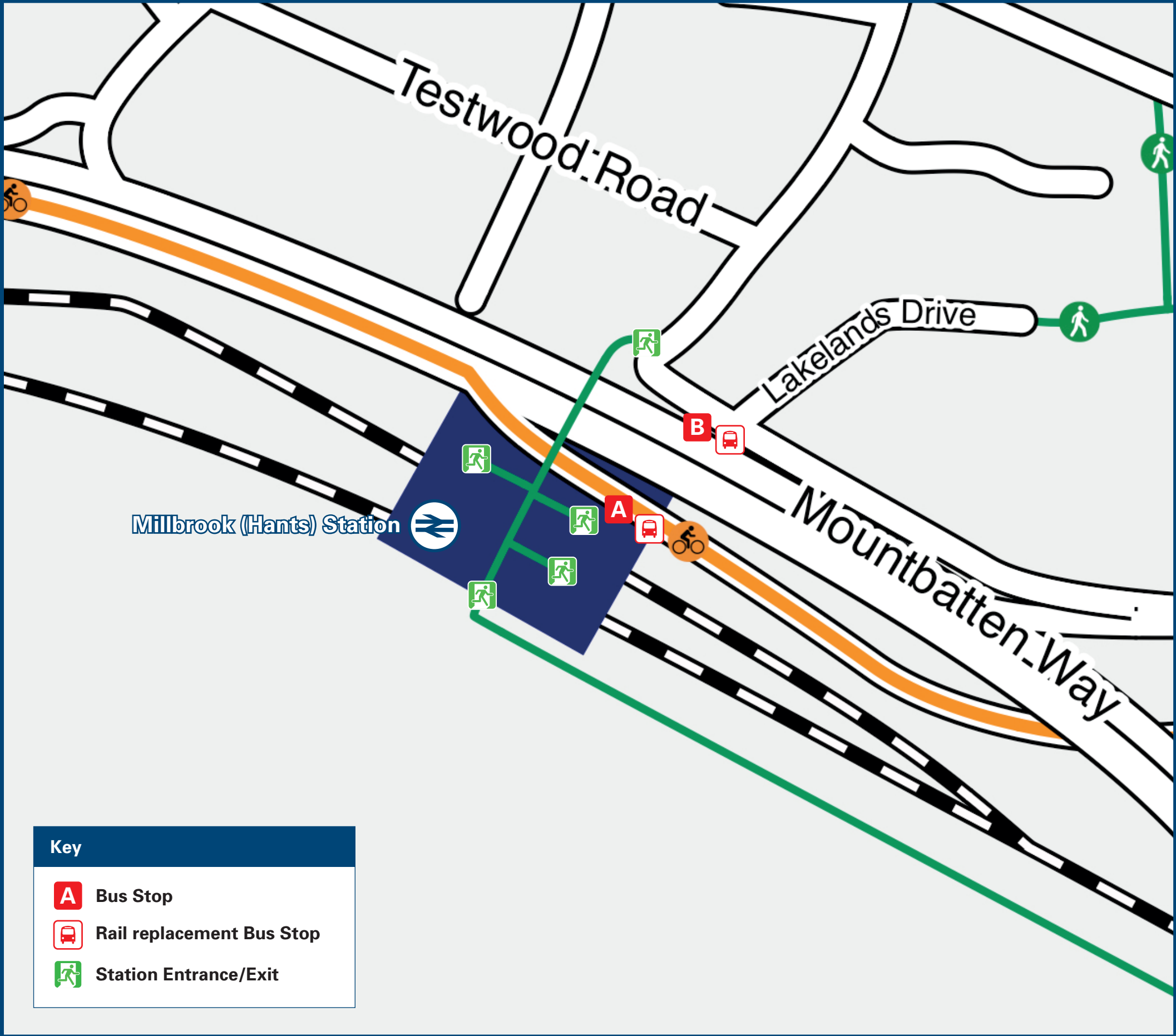




Millbrook Station

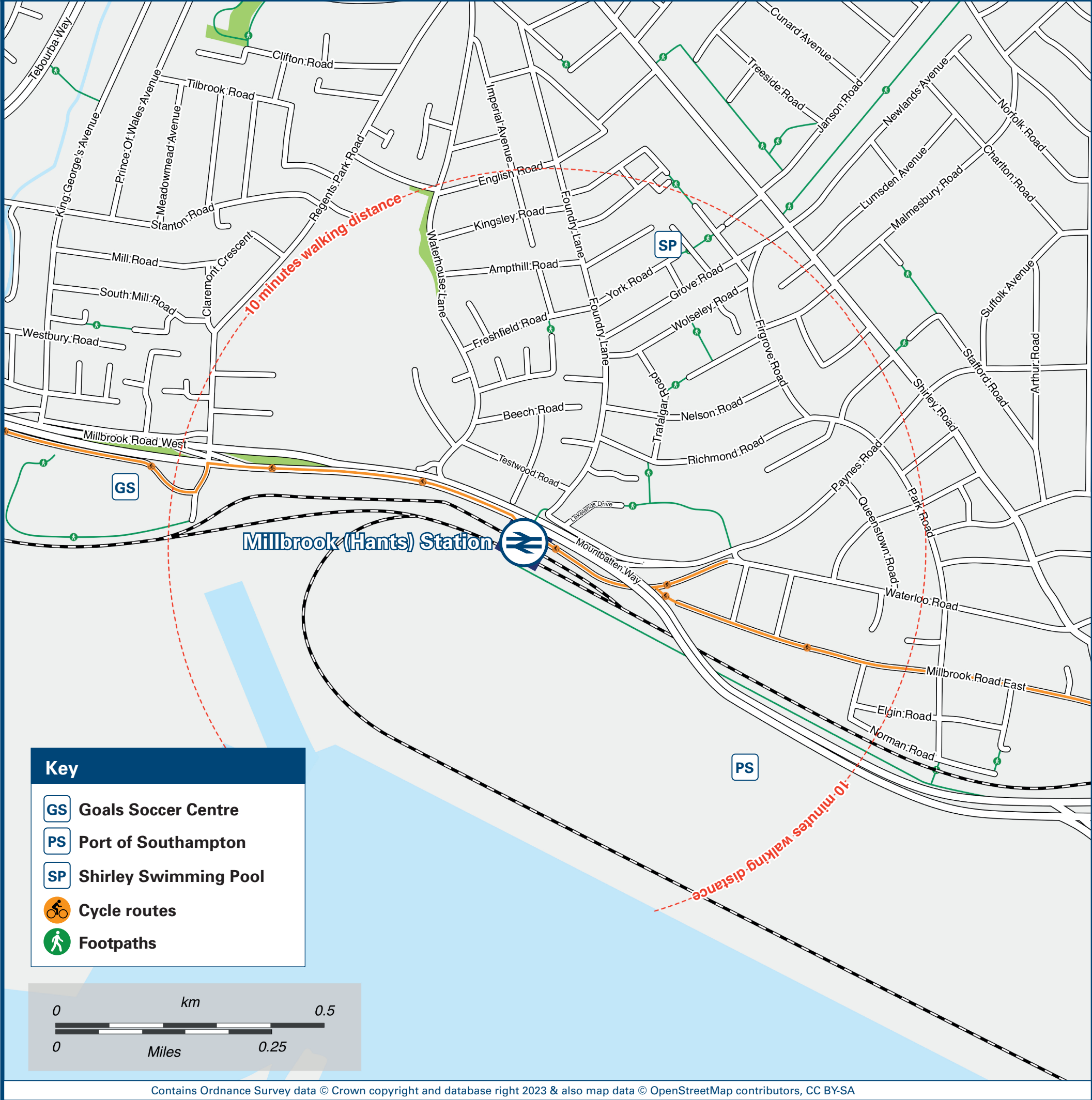
Onward Travel Information

Buses



In the event of engineering work, the bus or coach will collect from (for journeys away from Southampton, to Totton and Romsey) the bus stop outside of the Station on the slip road from Waterloo Road to Mountbatten Way (A33) and from (for journeys towards Southampton) the bus stop on Mountbatten Way (A33) by Lakelands Drive

Local area map



Main destinations by bus

(Data correct at December 2023)



DESTINATION	BUS ROUTES	BUS STOP
Alderbury	X7, X7R	A
Applemore (Claypits Lane / Challenger Way)	8	A
Applemore Tesco	8, 9	A
Ashurst Station / Village	6	A
Blackfield	9	A
Buttsash	9	A
Calmore (Calmore Drive)	12	A
Calmore (Salisbury Road)	12, X7, X7R	A
Calshot	9	A
Dibden	8	A
Dibden Purlieu (Beaulieu Road)	9	A
Fawley (The Square)	9	A
Foxhills	6	A
Hardley	9	A
Holbury	9	A
Hounsdown	8	A

DESTINATION	BUS ROUTES	BUS STOP
Hythe	8, 9	A
Landford	X7	A
Langley	9	A
Lepe Beach	9	A
Lyndhurst	6	A
Marchwood	8, 9*	A
Ower (The Vine Inn)**	X7, X7R	A
Paultons Park (Main Entrance)***	X7***, X7R***	A
Plaitford	X7	A
Pooksgreen	8	A
Redbridge Flyover	6, 8, 11, 12	A
Romsey Bus Station	X7R	A
Rushington (Rushington Avenue / Rushington Lane)	6	A
Rushington (Totton by-pass)	8, 9	A
Salisbury	X7, X7R	A
Southampton Central Station	6, 8, 9, 11, 12, X7, X7R	B

DESTINATION	BUS ROUTES	BUS STOP
Southampton City Centre	6, 8, 9, 11, 12, X7, X7R	B
Testwood (Salisbury Road)	12, X7, X7R	A
Totton College	11	A
Totton Station & Town Centre	6, 8, 11, 12, X7, X7R	A
West Totton (Goodies)	11	A
West Wellow	X7	A
Whaddon	X7, X7R	A
Whiteparish	X7, X7R	A

Notes

For bus times and days of operation please see bus stop timetables or contact Traveline
Bus routes 6, 8, 9, 11 and 12 run daily services.
Bus routes X7 and X7R run limited Mondays to Saturdays services, only.
☺ Direct trains operate to this destination from this Station
* Certain late evening journeys only
** Paultons Park is about 10 minutes walk from Ower, Romsey Road, which is served by all X7 and X7R journeys
*** Paultons Park is served directly by some X7 or X7R journeys during certain Wiltshire School Holidays - please check prior to travel
To this destination, bus route 8 operates on Mondays to Saturdays, only. No Sunday service.

Taxis

Millbrook (Hants) Station has no taxi rank or cab office. Advance booking is essential, please consider using the following local operators: (Inclusion of this number doesn't represent any endorsement of the taxi firm)

Radio Taxis
023 8066 6666

Door 2 Door Cars
023 8039 3939

Southampton Taxis
023 8192 0677

Further information about all onward travel

Local Cycle Info southampton.gov.uk For more information about cycle routes.	National Cycle Info sustrans.org.uk Sustrans is the UK's leading sustainable transport charity.	Bus Times See timetable displays at bus stops. www.traveline.info 0871 200 22 33 calls cost 15p per minute plus your phone company's access charge	NextBuses Find the bus times for your stop. Search for a bus stop by entering a postcode, street & town or a stop name & town.	PlusBus plusbus.info A discount price 'bus pass' that you buy with your train ticket. It gives you unlimited bus travel around your chosen town, on participating buses.
---	---	---	--	--

National Rail Enquiries

Online nationalrail.co.uk	NRE App Free National Rail Enquiries app for iOS and Android	Social Media facebook.com/nationalrailenq @nationalrailenq	Alert Me You can sign up to Alert Me messages on the National Rail Enquiries website where you can receive train and platform notifications directly to your smart phone. nationalrail.co.uk/alertme	Contact Centre 03457 48 49 50 Calls cost no more than calls to geographic numbers (01 or 02) and may be recorded.	PlusBike nationalrail.co.uk/plusbike For more information.
---	--	--	---	--	--

South Western
Railway



National Rail
Britain's train companies working together

