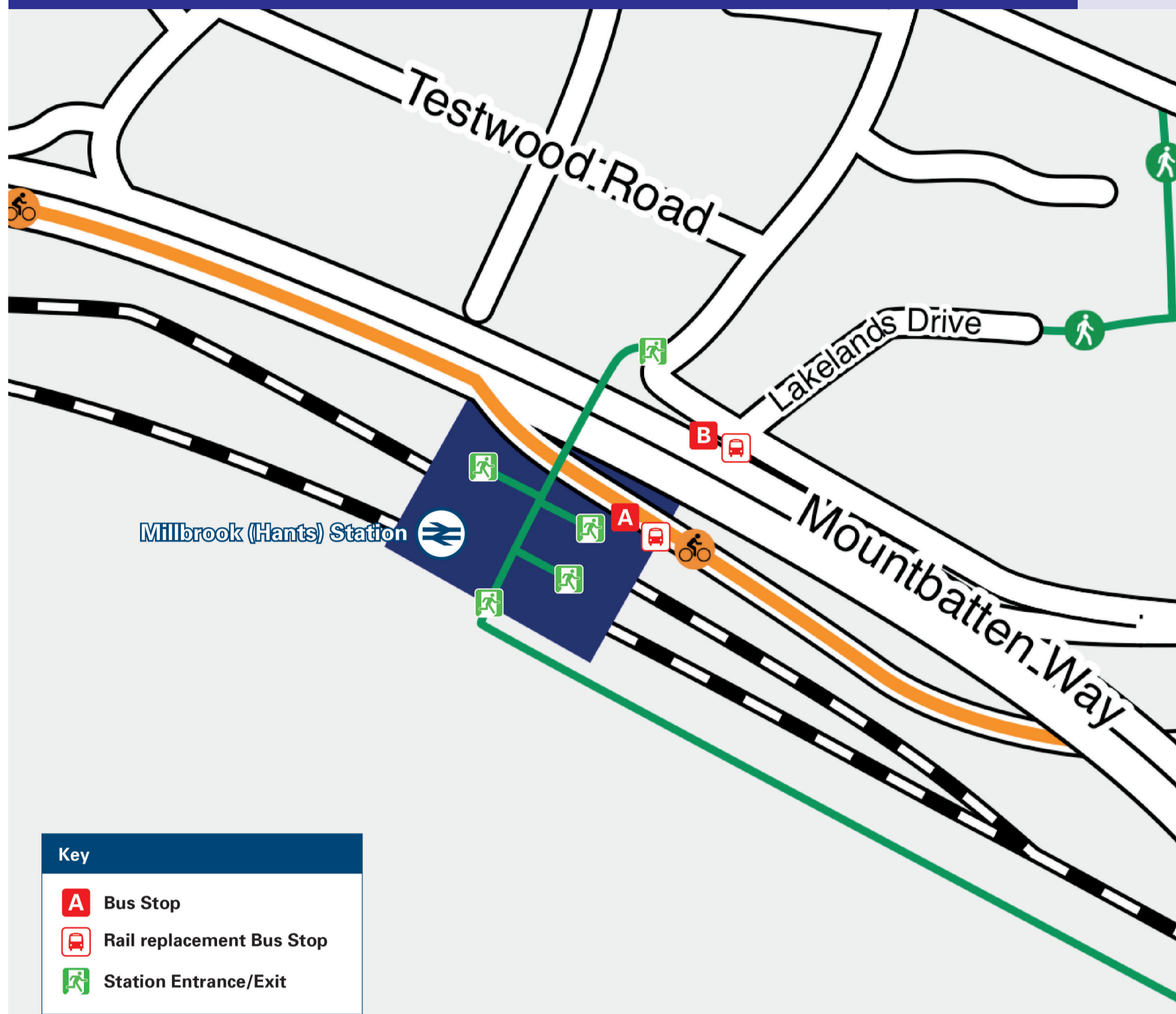




Onward Travel Information

Millbrook Station

Buses



Rail Replacement buses From Totton / Romsey: Bus Stop outside of Station on sliproad from Waterloo Road to Mountbatten Way (A33); buses towards Southampton: Mountbatten Way (A33) Bus Stop by Lakelands Drive.

Local area map



Main destinations by bus

(Data correct at July 2026)



DESTINATION	BUS ROUTES	BUS STOP	DESTINATION	BUS ROUTES	BUS STOP	DESTINATION	BUS ROUTES	BUS STOP
Alderbury	X7, X7R	A	Hythe	8, 9	A	Southampton City Centre	8, 9, 11, 12, 86, X7, X7R	B
Applemore (Claypits Lane / Challenger Way)	8	A	Landford	X7	A	Testwood (Salisbury Road)	12, X7, X7R	A
Applemore Tesco	8, 9	A	Langley	9	A	Totton College	11	A
Ashurst Station / Village	6	A	Lyndhurst	86	A	Totton Station & Town Centre	8, 11, 12, 86, X7, X7R	A
Blackfield	9	A	Marchwood	8, 9*	A	West Totton (Goodies)	11	A
Buttsash	9	A	Ower (The Vine Inn)**	X7, X7R	A	West Wellow	X7	A
Calmore (Calmore Drive)	12	A	Paultons Park (Main Entrance)***	X7***, X7R***	A	Whaddon	X7, X7R	A
Calmore (Salisbury Road)	12, X7, X7R	A	Plaitford	X7	A	Whiteparish	X7, X7R	A
Calshot	9	A	Pooksgreen	8	A			
Dibden	8	A	Redbridge Flyover	8, 11, 12, 86	A			
Dibden Purlieu (Beaulieu Road)	9	A	Romsey Bus Station	X7R	A			
Fawley (The Square)	9	A	Rushington (Rushington Avenue / Rushington Lane)	86	A			
Foxhills	86	A	Rushington (Totton by-pass)	8, 9	A			
Hardley	9	A	Salisbury	X7, X7R	A			
Holbury	9	A	Southampton Central Station	8, 9, 11, 12, 86, X7, X7R	B			
Hounslow	8	A						

NOTES

For bus times and days of operation please contact Traveline on www.traveline.info or call: 0871 200 22 33
 Bus routes 8, 9, 11, 12 and 86 run daily services.
 Bus routes X7 and X7R run limited services on Mondays to Saturdays, only. No Sunday services.
 Direct trains operate to this destination from this Station
 * Certain late evening journeys only
 ** Paultons Park is about 10 minutes walk from Ower, Romsey Road, which is served by all X7 and X7R journeys
 *** Paultons Park is served directly by some X7 or X7R journeys during certain Wiltshire School Holidays - please check prior to travel

Taxis

Millbrook (Hants) Station has no taxi rank or cab office. Advance booking is essential, please consider using the following local operators: (Inclusion of this number doesn't represent any endorsement of the taxi firm)

Radio Taxis
023 8066 6666

Door 2 Door Cars
023 8039 3939

Southampton Taxis
023 8000 5005

Further information about all onward travel

Local Cycle Info southampton.gov.uk For more information about cycle routes.	National Cycle Info walkwheelcycletrust.org.uk	Bus Times See timetable displays at bus stops. www.traveline.info 0871 200 22 33 public transport info please use your phone's camera to scan the QR code	PlusBus plusbus.info PlusBus is a discount price 'bus pass' that you buy with your train ticket. It gives you unlimited bus travel around your chosen town, on participating buses. Visit plusbus.info
---	--	---	---

National Rail Enquiries

Online nationalrail.co.uk	NRE App Free National Rail Enquiries app for iOS and Android	Social Media facebook.com/nationalrailenq @nationalrailenq	Alert Me nationalrail.co.uk/alertme You can sign up to Alert Me messages on the National Rail Enquiries website where you can receive train and platform notifications directly to your smart phone.	Contact Centre 03457 48 49 50 Calls cost no more than calls to geographic numbers (01 or 02) and may be recorded.	PlusBike nationalrail.co.uk/plusbike For more information.
---	--	---	---	--	--

