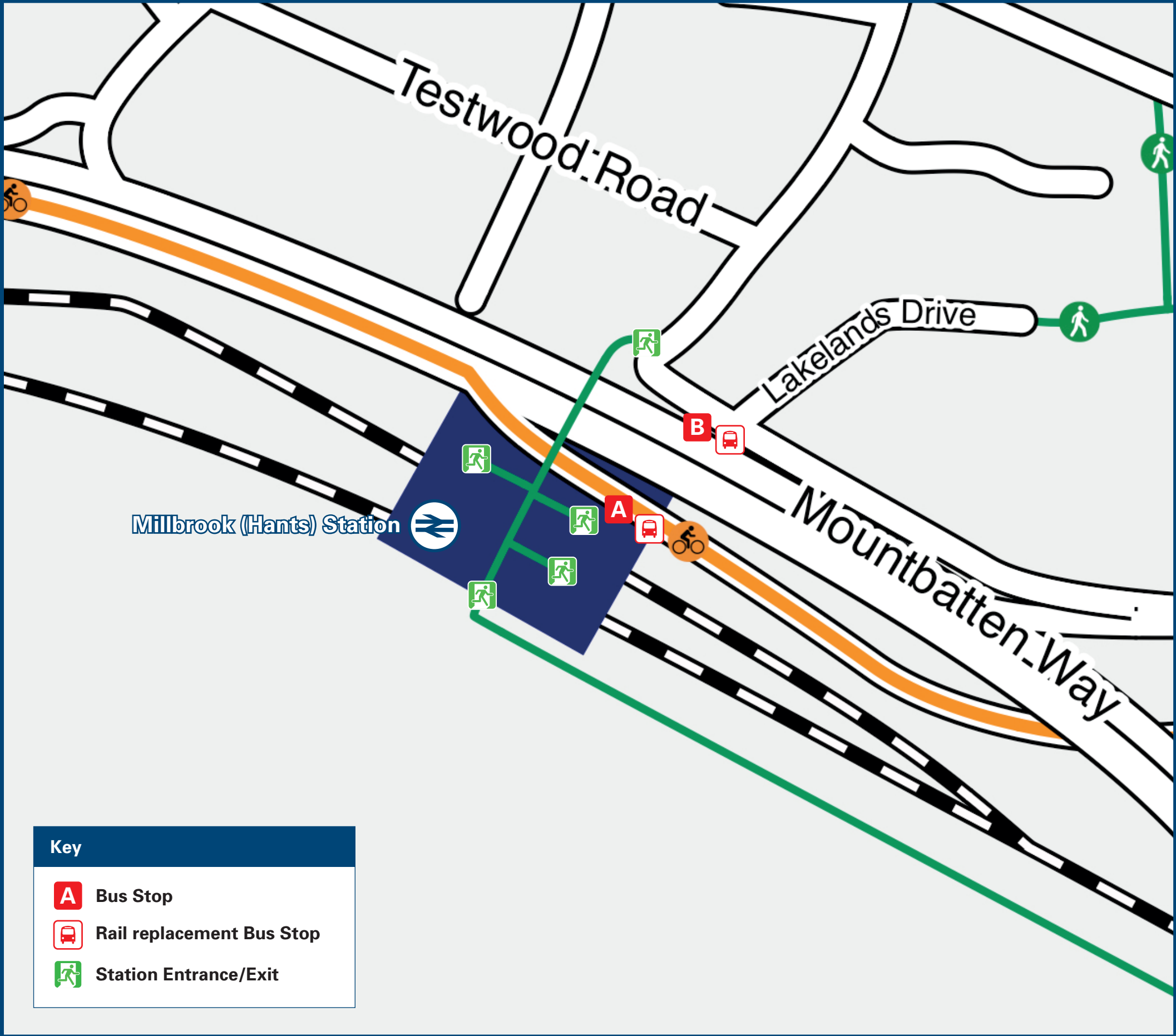




Millbrook Station

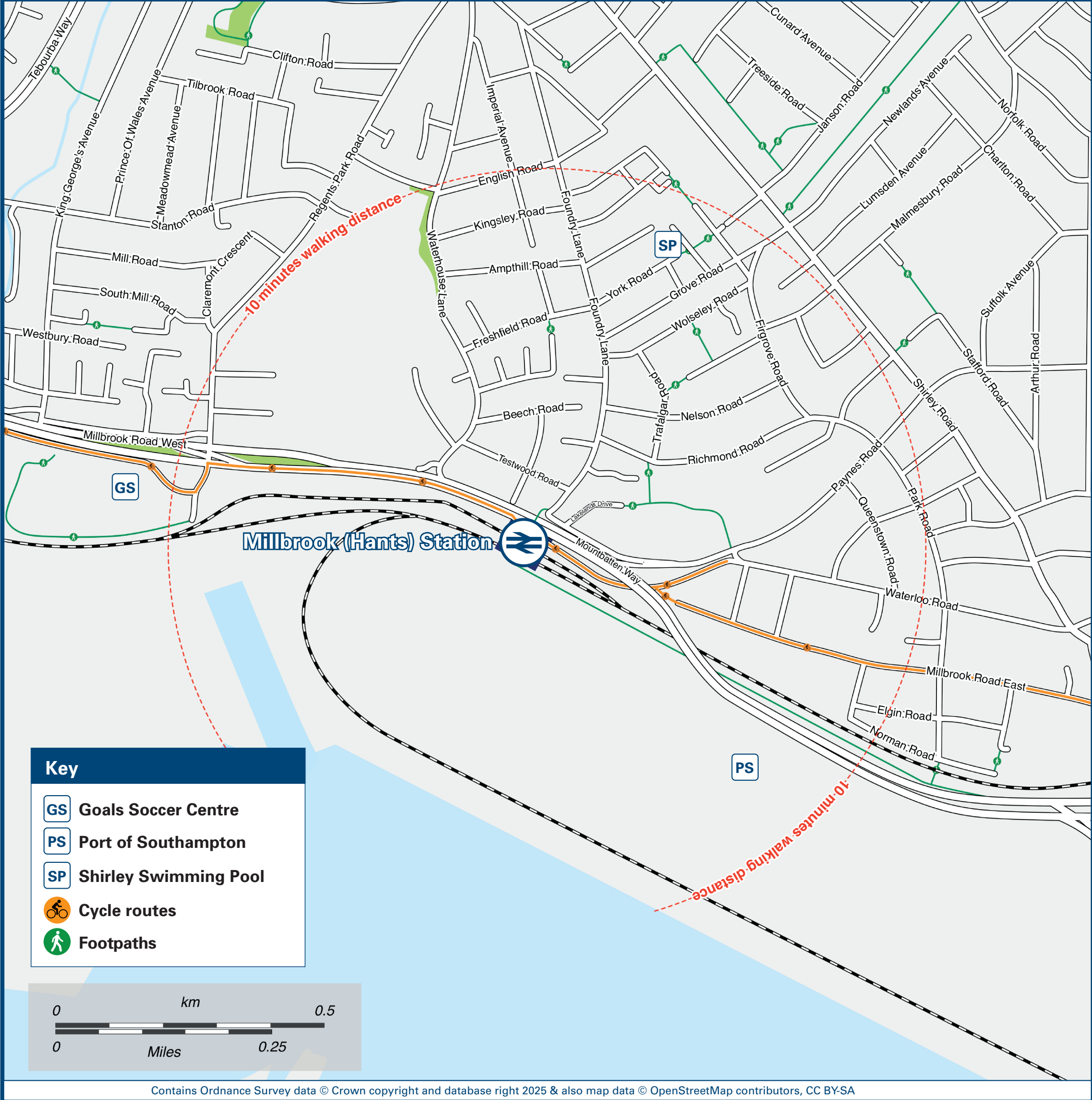
Onward Travel Information

Buses



In the event of engineering work, the bus or coach will collect from (for journeys away from Southampton, to Totton and Romsey) the bus stop outside of the Station on the slip road from Waterloo Road to Mountbatten Way (A33) and from (for journeys towards Southampton) the bus stop on Mountbatten Way (A33) by Lakelands Drive

Local area map



Main destinations by bus

(Data correct at December 2025)



DESTINATION	BUS ROUTES	BUS STOP	DESTINATION	BUS ROUTES	BUS STOP	DESTINATION	BUS ROUTES	BUS STOP
Alderbury	X7, X7R	A	Hythe	8, 9	A	Testwood (Salisbury Road)	12, X7, X7R	A
Applemore (Claypits Lane / Challenger Way)	8	A	Landford	X7	A	Totton College	11	A
Applemore Tesco	8, 9	A	Langley	9	A	Totton Station & Town Centre	6, 8, 11, 12, X7, X7R	A
Ashurst Station / Village	6	A	Lyndhurst	6	A	West Totton (Goodies)	11	A
Blackfield	9	A	Marchwood	8, 9*	A	West Wellow	X7	A
Buttsash	9	A	Ower (The Vine Inn)**	X7, X7R	A	Whaddon	X7, X7R	A
Calmore (Calmore Drive)	12	A	Paultons Park (Main Entrance)***	X7***, X7R***	A	Whiteparish	X7, X7R	A
Calmore (Salisbury Road)	12, X7, X7R	A	Plaitford	X7	A			
Calshot	9	A	Pooksgreen	8	A			
Dibden	8	A	Redbridge Flyover	6, 8, 11, 12	A			
Dibden Purlieu (Beaulieu Road)	9	A	Romsey Bus Station	X7R	A			
Fawley (The Square)	9	A	Rushington (Rushington Avenue / Rushington Lane)	6	A			
Foxhills	6	A	Rushington (Totton by-pass)	8, 9	A			
Hardley	9	A	Salisbury	X7, X7R	A			
Holbury	9	A	Southampton Central Station	6, 8, 9, 11, 12, X7, X7R	B			
Hounslow	8	A	Southampton City Centre	6, 8, 9, 11, 12, X7, X7R	B			

Notes

For bus times and days of operation please contact Traveline on www.traveline.info or call: 0871 200 22 33

Bus routes 6, 8, 9, 11 and 12 run daily services.

Bus routes X7 and X7R run limited services on Mondays to Saturdays, only. No Sunday services.

Direct trains operate to this destination from this Station

* Certain late evening journeys only

** Paultons Park is about 10 minutes walk from Ower, Romsey Road, which is served by all X7 and X7R journeys

*** Paultons Park is served directly by some X7 or X7R journeys during certain Wiltshire School Holidays - please check prior to travel

Taxis

Millbrook (Hants) Station has no taxi rank or cab office. Advance booking is essential, please consider using the following local operators: (Inclusion of this number doesn't represent any endorsement of the taxi firm)

Radio Taxis
023 8066 6666

Door 2 Door Cars
023 8039 3939

Southampton Taxis
023 8000 5005

Further information about all onward travel

Local Cycle Info	National Cycle Info	Bus Times	PlusBus
southampton.gov.uk For more information about cycle routes.	walkwheelcycletrust.org.uk	See timetable displays at bus stops. www.traveline.info 0871 200 22 33 calls cost 15p per minute plus your phone company's access charge	 plusbus.info PlusBus is a discount price 'bus pass' that you buy with your train ticket. It gives you unlimited bus travel around your chosen town, on participating buses. Visit www.plusbus.info

National Rail Enquiries

Online	NRE App	Social Media	Alert Me	Contact Centre	PlusBike
nationalrail.co.uk	Free National Rail Enquiries app for iOS and Android	facebook.com/nationalrailenq @nationalrailenq	You can sign up to Alert Me messages on the National Rail Enquiries website where you can receive train and platform notifications directly to your smart phone. nationalrail.co.uk/alertme	03457 48 49 50 Calls cost no more than calls to geographic numbers (01 or 02) and may be recorded.	nationalrail.co.uk/plusbike For more information.

South Western
Railway



National Rail
Britain's train companies working together

