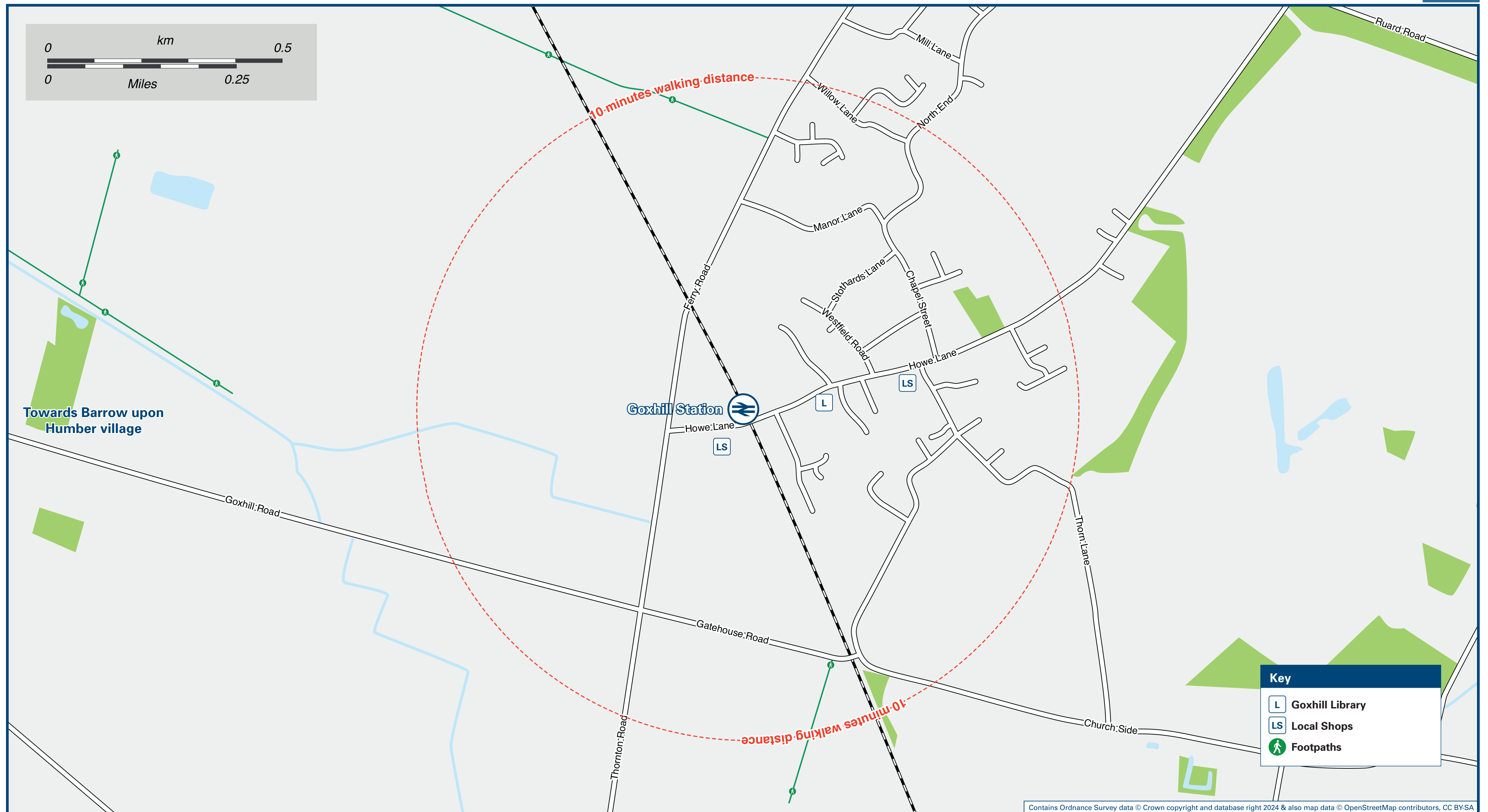




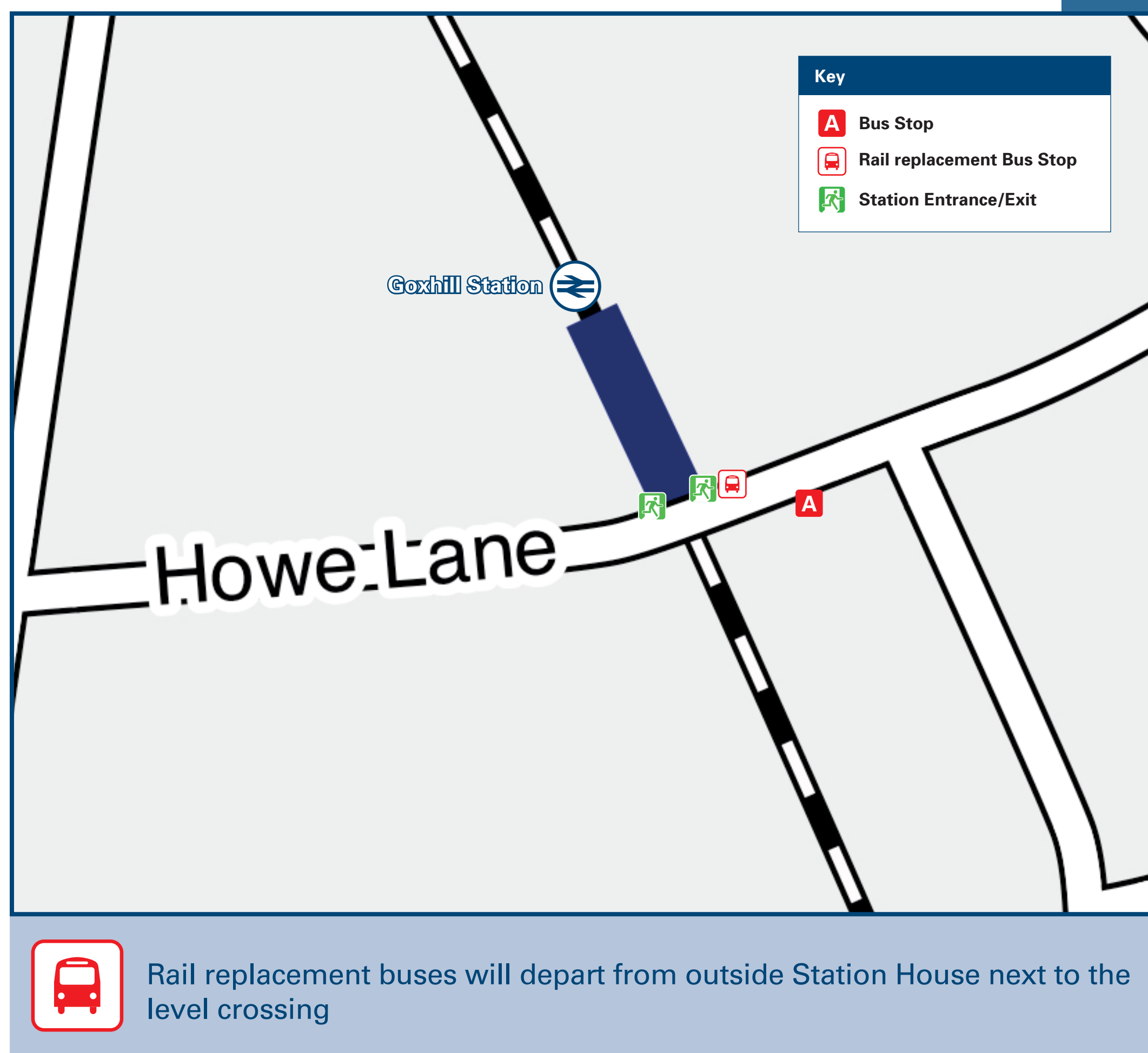
Goxhill Station

Onward Travel Information

Local area map



Buses



Main destinations by bus

(Data correct at June 2024)

DESTINATION	BUS ROUTES	BUS STOP
Barrow-upon-Humber	260	A
Barton-upon-Humber	260	A
East Halton	260#	A
Immingham	260#	A
New Holland	260	A
North Killingholme	260#	A
South Killingholme	260#	A
Thornton Abbey	260#	A

Notes

JustGo North Lincs is an on-demand bus service for people travelling in North Lincolnshire (but not between two points within Scunthorpe) and is available 7am-7pm Mondays to Fridays and 8am-6pm on Saturdays. To book download the JustGo North Lincs App or by calling 01482 592 959.

Bus route 260 operates Mondays to Saturdays, only.

For bus times please see bus stop timetables or contact Traveline on 0871 200 22 33 or contact Stagecoach on 0345 241 8000.

Not all bus route 260 journeys call at this destination, please check the timetable for times.

Direct trains operate to this destination from Goxhill station.

Taxis

Goxhill station has no taxi rank or cab office. Advance booking is essential, please consider using the following local operators: (Inclusion of this number doesn't represent any endorsement of the taxi firm)

DJ Cars
01469 574 111

PHS Private Hire
07960 989 433

Further information about all onward travel

Local Cycle Info northlincs.gov.uk For more information about cycle routes.	National Cycle Info sustrans.org.uk Sustrans is the UK's leading sustainable transport charity.	Bus Times See timetable displays at bus stops. www.traveline.info 0871 200 22 33 <small>calls cost 13p per minute plus your phone company's access charge</small>	NextBuses Find the bus times for your stop. Search for a bus stop by entering a postcode, street & town or a stop name & town.	PlusBus plusbus.info A discount price 'bus pass' that you buy with your train ticket. It gives you unlimited bus travel around your chosen town, on participating buses.
---	---	---	--	--

National Rail Enquiries

Online nationalrail.co.uk	NRE App Free National Rail Enquiries app for iOS and Android	Social Media facebook.com/nationalrailenq @nationalrailenq	Alert Me You can sign up to Alert Me messages on the National Rail Enquiries website where you can receive train and platform notifications directly to your smart phone. nationalrail.co.uk/alertme	Contact Centre 03457 48 49 50 Calls cost no more than calls to geographic numbers (01 or 02) and may be recorded.	PlusBike nationalrail.co.uk/plusbike For more information.
---	--	--	---	---	--



National Rail
Britain's train companies working together

