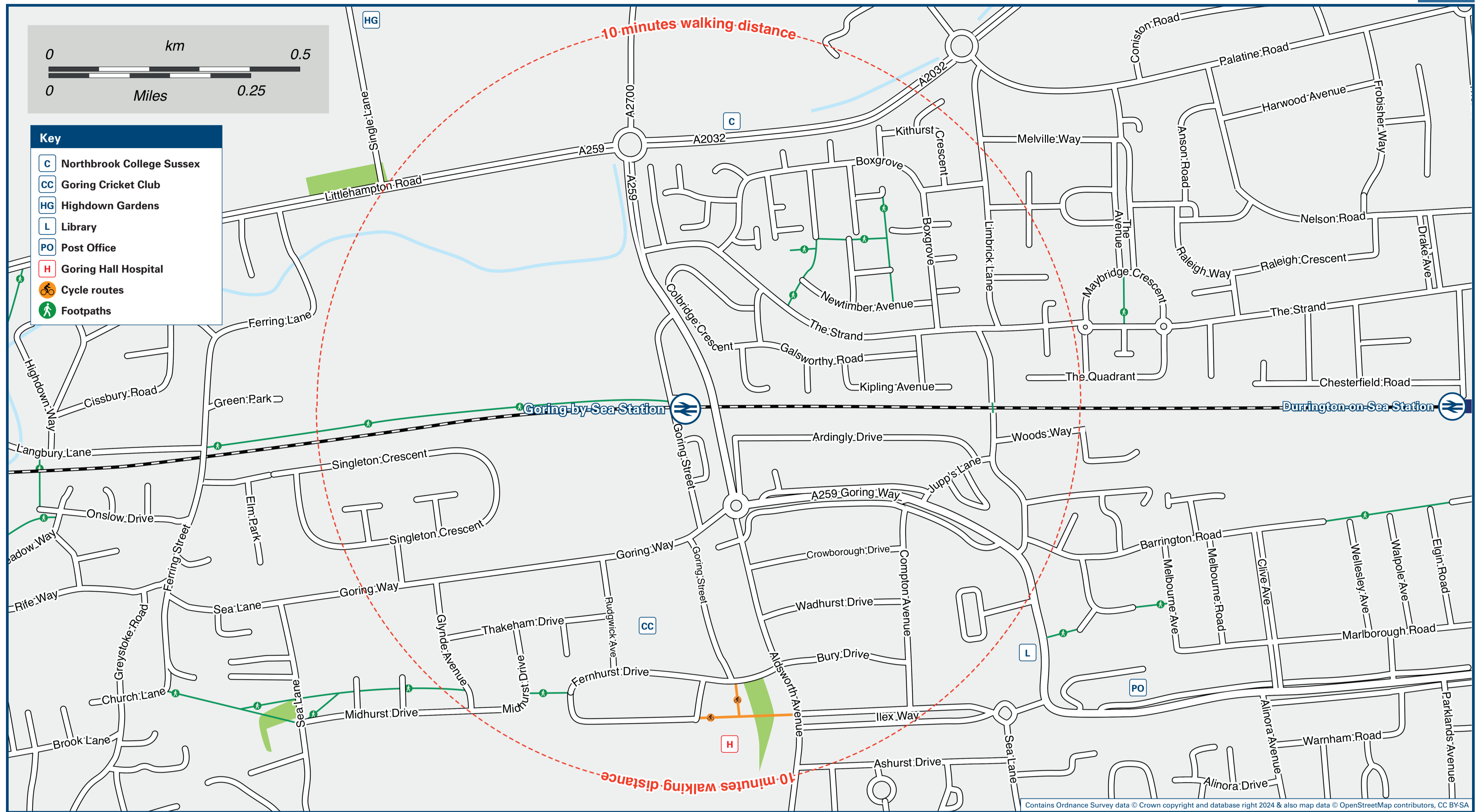




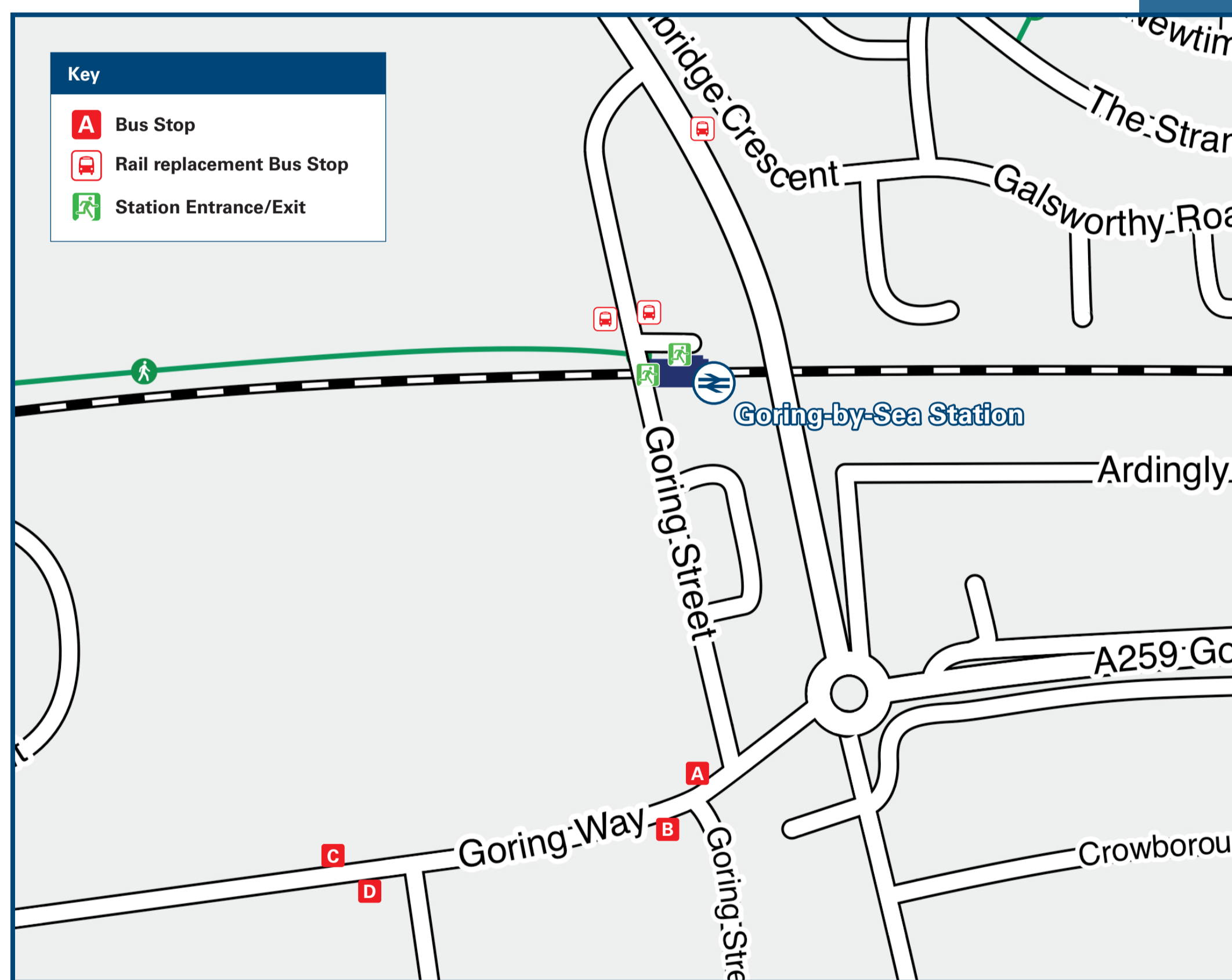
# Goring-By-Sea Station

# Onward Travel Information

## Local area map



## Buses



When the level crossing is available rail replacement buses will depart from outside of the Station on Goring Street. When the level crossing is unavailable rail replacement buses will depart from Goring Street (A259).

## Main destinations by bus

DESTINATION	BUS ROUTES	BUS STOP
Brighton (City Centre / Churchill Square)	700	A
East Preston	700	B
East Worthing (Brighton Road)	700	A
Ferring	8, 700	B
	8, 8A, 700	D
Goring-by-Sea (Church)	8, 700	A
	8, 8A, 700	C
Goring-by-Sea (Marine Crescent)	8	A
	8, 8A	C
Hove	700	A
Littlehampton (Anchor Springs)	700	B
Portslade	700	A
Rustington (Shops / The Street)	700	B
Shoreham-by-Sea	700	A
South Ferring	8	B
	8, 8A	D
South Lancing	700	A
West Worthing (Goring Road / Wallace Avenue)	8, 700	A
	8, 8A, 700	C
West Worthing (Grand Avenue / Hythe Road)	8, 700	A
West Worthing (Marine Gardens)	8A	C
Worthing (Marine Parade / Pier)	8, 700	A
	8, 8A, 700	C

**Notes**

Bus routes 8 and 8A operate Mondays to Saturdays. No Sunday services.  
 Bus route 700 operates daily.  
 For bus times and the latest bus service information, please contact Traveline [www.traveline.infor](http://www.traveline.infor), or call 0871 200 22 33  
[www.compass-travel.co.uk](http://www.compass-travel.co.uk) (for bus routes 8 & 8A); or [www.stagecoachbus.com](http://www.stagecoachbus.com) (for bus route 700)  
 Direct trains operate to this destination from this Station.

## Taxis

Goring-by-Sea Station has no taxi rank or cab office. Advance booking is essential, please consider using the following local operators: (Inclusion of this number doesn't represent any endorsement of the taxi firm)

**Arrow Taxi**  
01903 212 121

**A & A Cars**  
01903 201 201

**Worthing Taxi**  
07707 757 708

## Further information about all onward travel

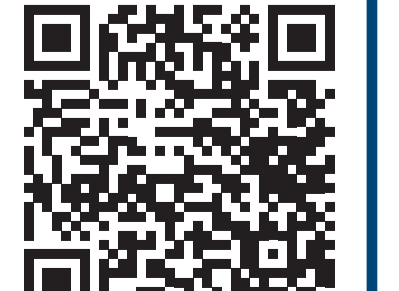
<b>Local Cycle Info</b> <a href="http://adur-worthing.gov.uk">adur-worthing.gov.uk</a> For more information about cycle routes.	<b>National Cycle Info</b> <a href="http://sustrans.org.uk">sustrans.org.uk</a> Sustrans is the UK's leading sustainable transport charity.	<b>Bus Times</b> See timetable displays at bus stops.  <a href="http://www.traveline.info">www.traveline.info</a> 0871 200 22 33 call cost 13p per minute plus your phone company's access charge	<b>NextBuses</b> <b>Find the bus times for your stop.</b> Search for a bus stop by entering a postcode, street & town or a stop name & town.	<b>PlusBus</b> <b>plusbus.info</b> A discount price 'bus pass' that you buy with your train ticket. It gives you unlimited bus travel around your chosen town, on participating buses.
---	---	--	--	--

## National Rail Enquiries

<b>Online</b> <a href="http://nationalrail.co.uk">nationalrail.co.uk</a>	<b>NRE App</b> Free National Rail Enquiries app for iOS and Android	<b>Social Media</b> facebook.com/nationalrailenq @nationalrailenq	<b>Alert Me</b> You can sign up to Alert Me messages on the National Rail Enquiries website where you can receive train and platform notifications directly to your smart phone. <a href="http://nationalrail.co.uk/alertme">nationalrail.co.uk/alertme</a>	<b>Contact Centre</b> 03457 48 49 50 Calls cost no more than calls to geographic numbers (01 or 02) and may be recorded.	<b>PlusBike</b> <a href="http://nationalrail.co.uk/plusbike">nationalrail.co.uk/plusbike</a> For more information.
---	--	---	---	--	--



**National Rail**  
Britain's train companies working together



This poster shows details of popular destinations and main, frequent bus routes. Additional services may run, so please check with Traveline or see posters at local bus stops. Whilst considerable care has been taken to ensure the information contained on this poster is correct and accurate, National Rail cannot accept responsibility for any loss or inconvenience caused by any errors or omissions, or for loss, damage, injury or inconvenience relating to the cancellation, alteration, delay or diversion of a service. For any feedback, please e-mail [comments@onwardtravelposters.com](mailto:comments@onwardtravelposters.com)

Scan this code with your mobile for full station information.