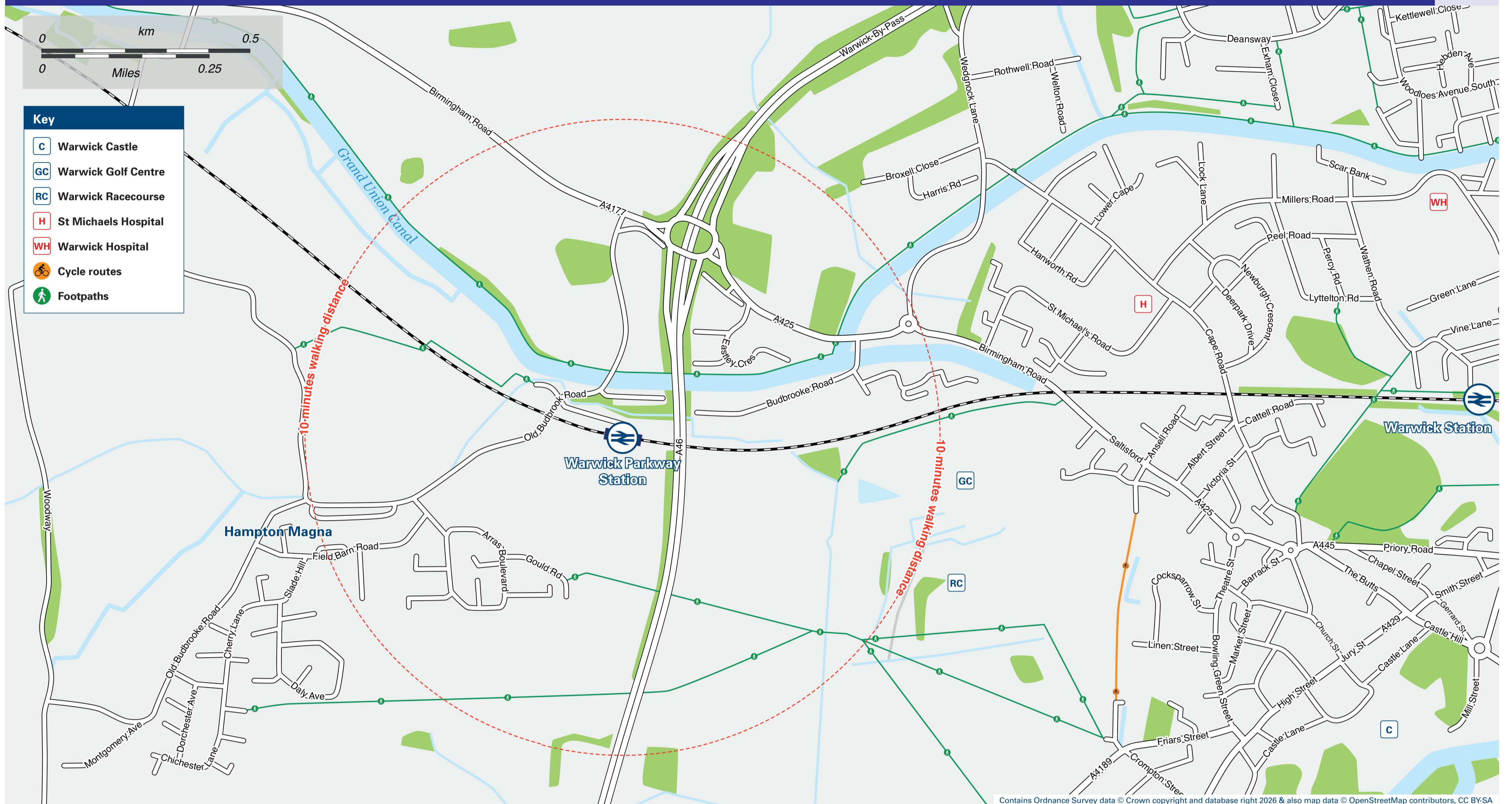




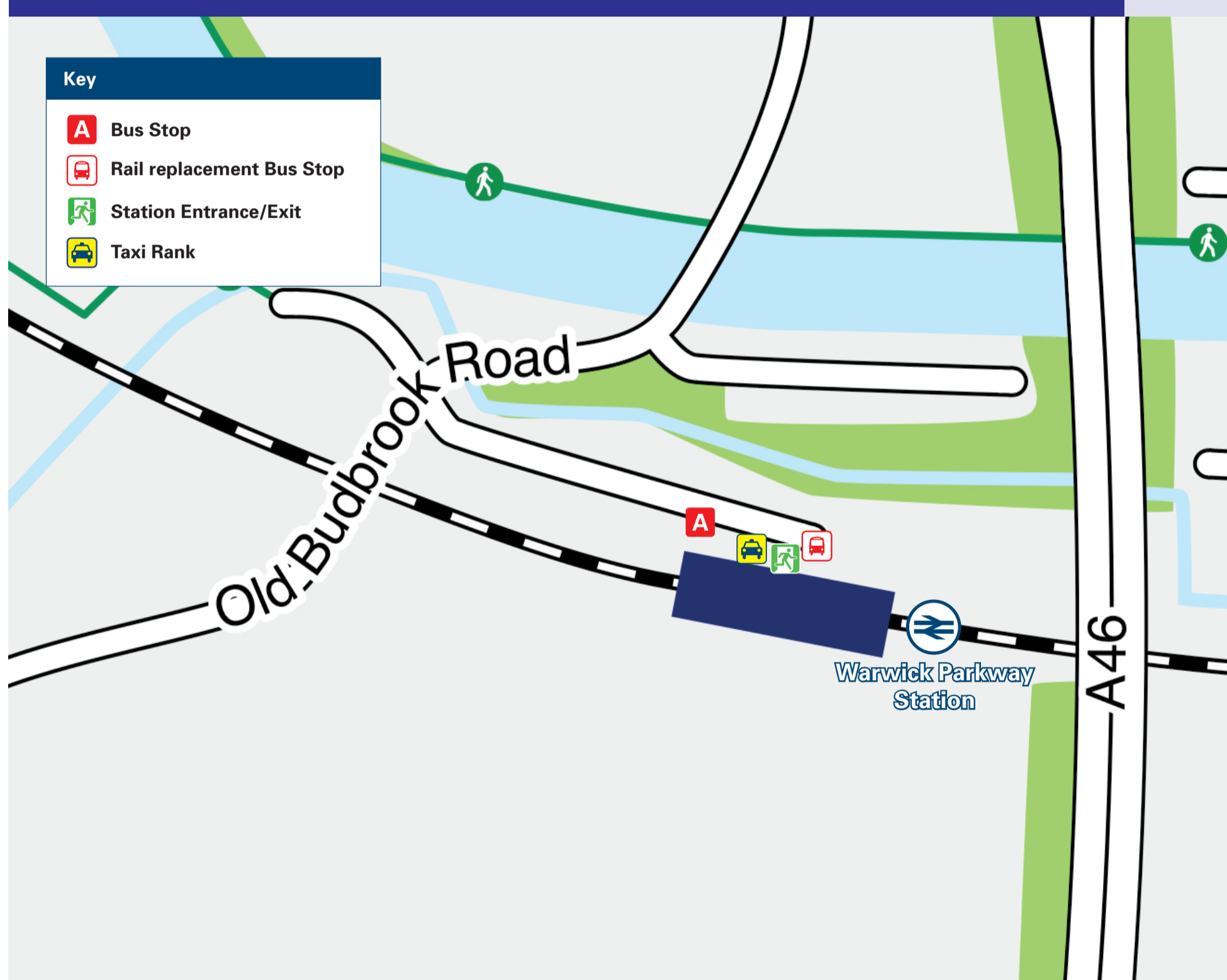
Onward Travel Information

Warwick Parkway Station

Local area map



Buses and Taxis



Rail replacement bus services depart from the station entrance.

Information

(Data correct at March 2026)

THERE ARE NO REGULAR BUS SERVICES FROM WARWICK PARKWAY RAILWAY STATION.

IndieGo Plus does operate a demand responsive service. Please contact indiegoplus@liftango.com, or call 01926 895 559 for bookings.

Warwick Parkway Station is served by a taxi rank. Check availability before travelling, and pre-book if necessary. Please consider using the following local operators: (Inclusion of this number doesn't represent any endorsement of the taxi firm)

Warwick Taxis
01926 499 966

Taxi Seven
01926 777 777

Golden Line Taxis
01926 888 850

Further information about all onward travel

Local Cycle Info warwickshire.gov.uk For more information about cycle routes.	National Cycle Info walkwheelcycletrust.org.uk	Bus Times See timetable displays at bus stops. www.traveline.info 0871 200 22 33 public transport info plus your phone's memory device charge	PlusBus plusbus.info PlusBus is a discount price 'bus pass' that you buy with your train ticket. It gives you unlimited bus travel around your chosen town, on participating buses. Visit plusbus.info
---	--	---	---

National Rail Enquiries

Online nationalrail.co.uk	NRE App Free National Rail Enquiries app for iOS and Android	Social Media facebook.com/nationalrailenq @nationalrailenq	Alert Me nationalrail.co.uk/alertme You can sign up to Alert Me messages on the National Rail Enquiries website where you can receive train and platform notifications directly to your smart phone.	Contact Centre 03457 48 49 50 Calls cost no more than calls to geographic numbers (01 or 02) and may be recorded.	PlusBike nationalrail.co.uk/plusbike For more information.
---	--	--	---	---	--

