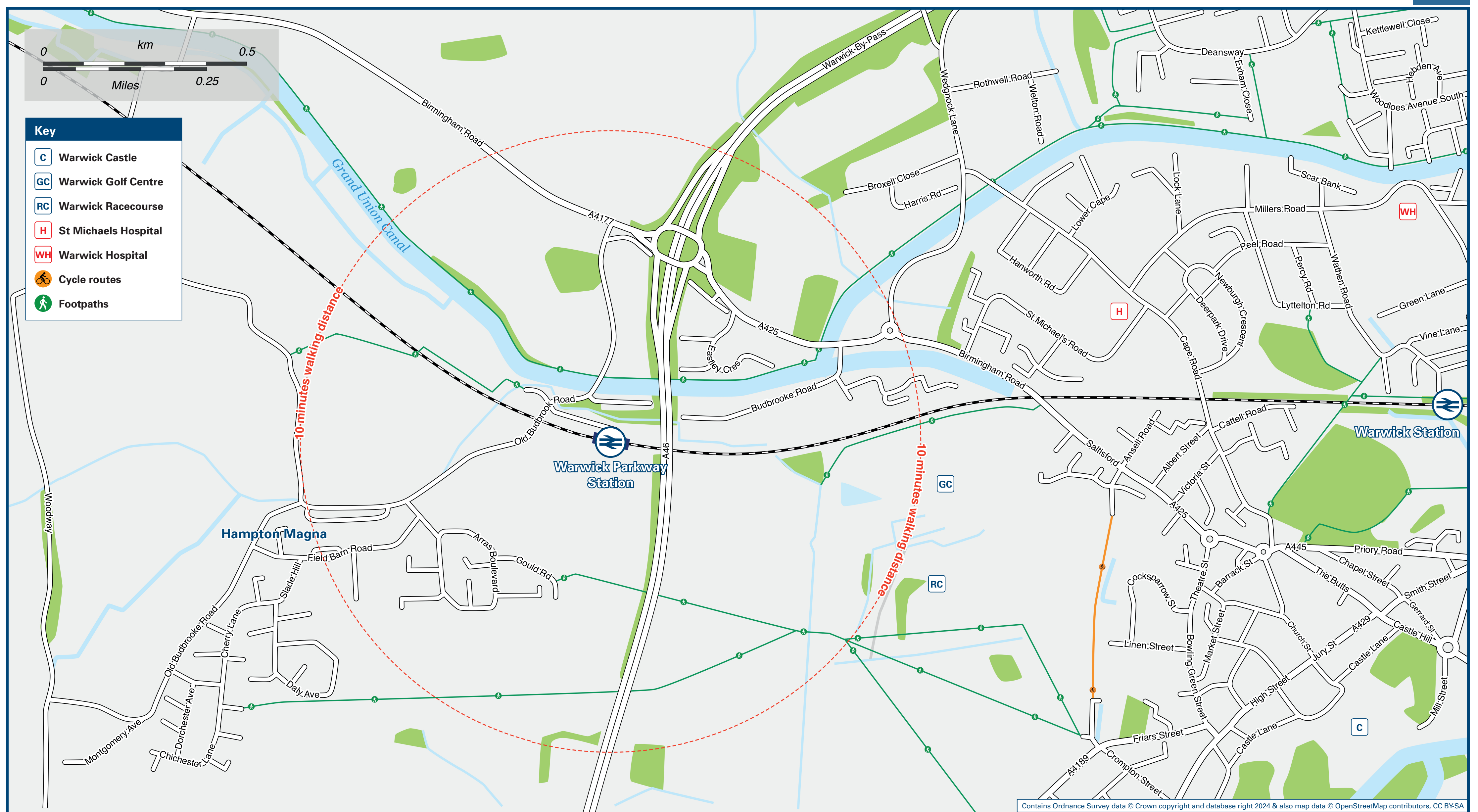




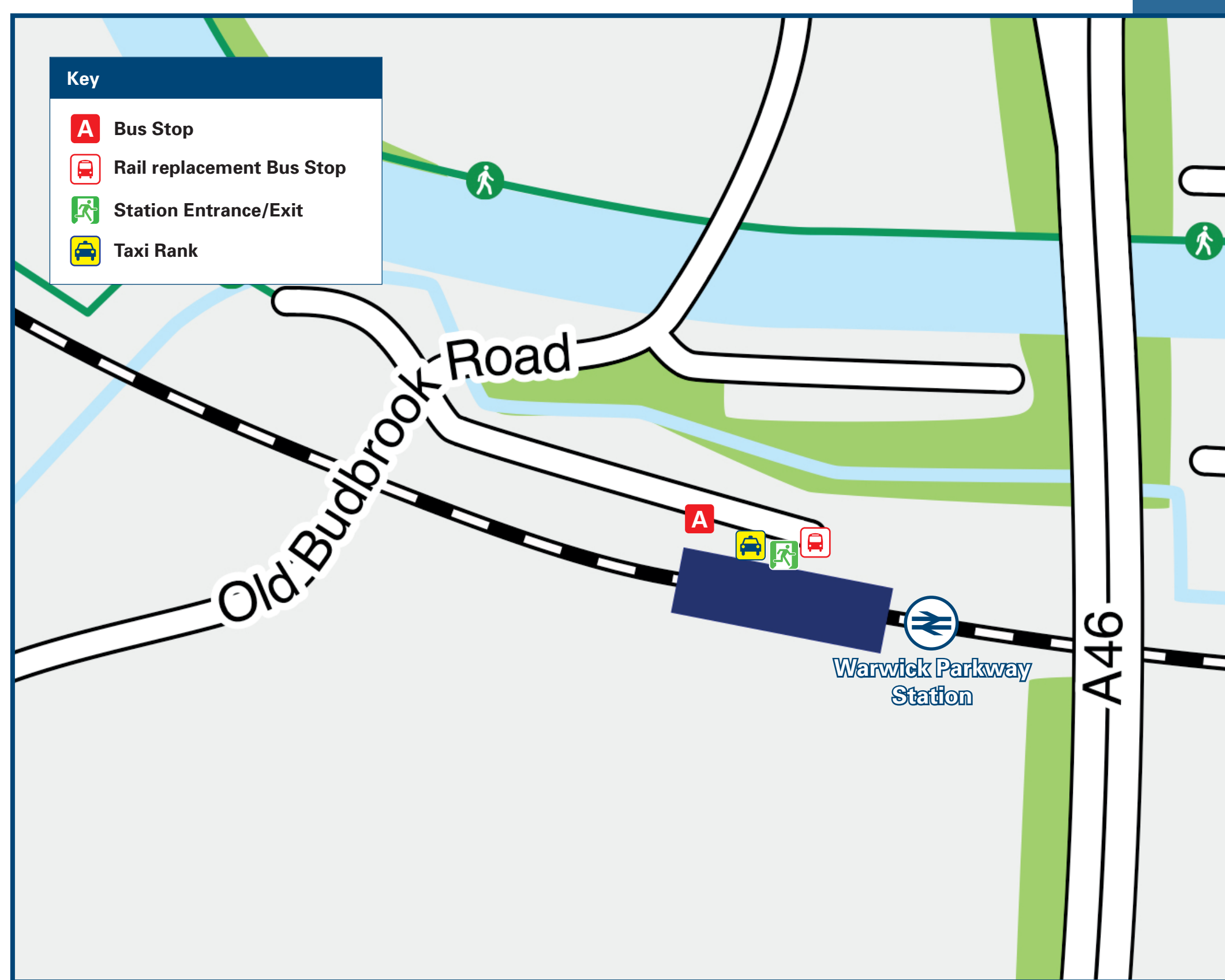
Warwick Parkway Station

Onward Travel Information

Local area map



Buses and Taxis



Rail replacement bus services depart from the station entrance.

Information

(Data correct at April 2024)

THERE ARE NO REGULAR BUS SERVICES FROM WARWICK PARKWAY RAILWAY STATION.

IndieGo Plus does operate a demand responsive service. Please contact indiegoplus@liftango.com, or call 01926 895 559 for bookings, services and questions about the app.

Warwick Parkway Station is served by a taxi rank or cab office. Check availability before travelling, and pre-book if necessary. Please consider using the following local operators: (Inclusion of this number doesn't represent any endorsement of the taxi firm)

Warwick Taxis
01926 499 966

Fairway Taxis
01926 497 777

Taxis Seven
01926 777 777

Further information about all onward travel

Local Cycle Info warwickshire.gov.uk For more information about cycle routes.	National Cycle Info sustrans.org.uk Sustrans is the UK's leading sustainable transport charity.	Bus Times See timetable displays at bus stops. www.traveline.info 0871 200 22 33 <small>calls cost 12p per minute plus your phone company's access charge</small>	NextBuses Find the bus times for your stop. Search for a bus stop by entering a postcode, street & town or a stop name & town.	PlusBus plusbus.info A discount price 'bus pass' that you buy with your train ticket. It gives you unlimited bus travel around your chosen town, on participating buses.
---	---	--	--	--

National Rail Enquiries

Online nationalrail.co.uk	NRE App Free National Rail Enquiries app for iOS and Android	Social Media facebook.com/nationalrailenq @nationalrailenq	Alert Me You can sign up to Alert Me messages on the National Rail Enquiries website where you can receive train and platform notifications directly to your smart phone. nationalrail.co.uk/alertme	Contact Centre 03457 48 49 50 Calls cost no more than calls to geographic numbers (01 or 02) and may be recorded.	PlusBike nationalrail.co.uk/plusbike For more information.
---	--	--	---	---	--



National Rail
Britain's train companies working together



Whilst considerable care has been taken to ensure the information contained on this poster is correct and accurate, National Rail cannot accept responsibility for any loss or inconvenience caused by any errors or omissions, or for loss, damage, injury or inconvenience caused. For any feedback, please e-mail comments@onwardtravelposters.com

Scan this code with your mobile for full station information.