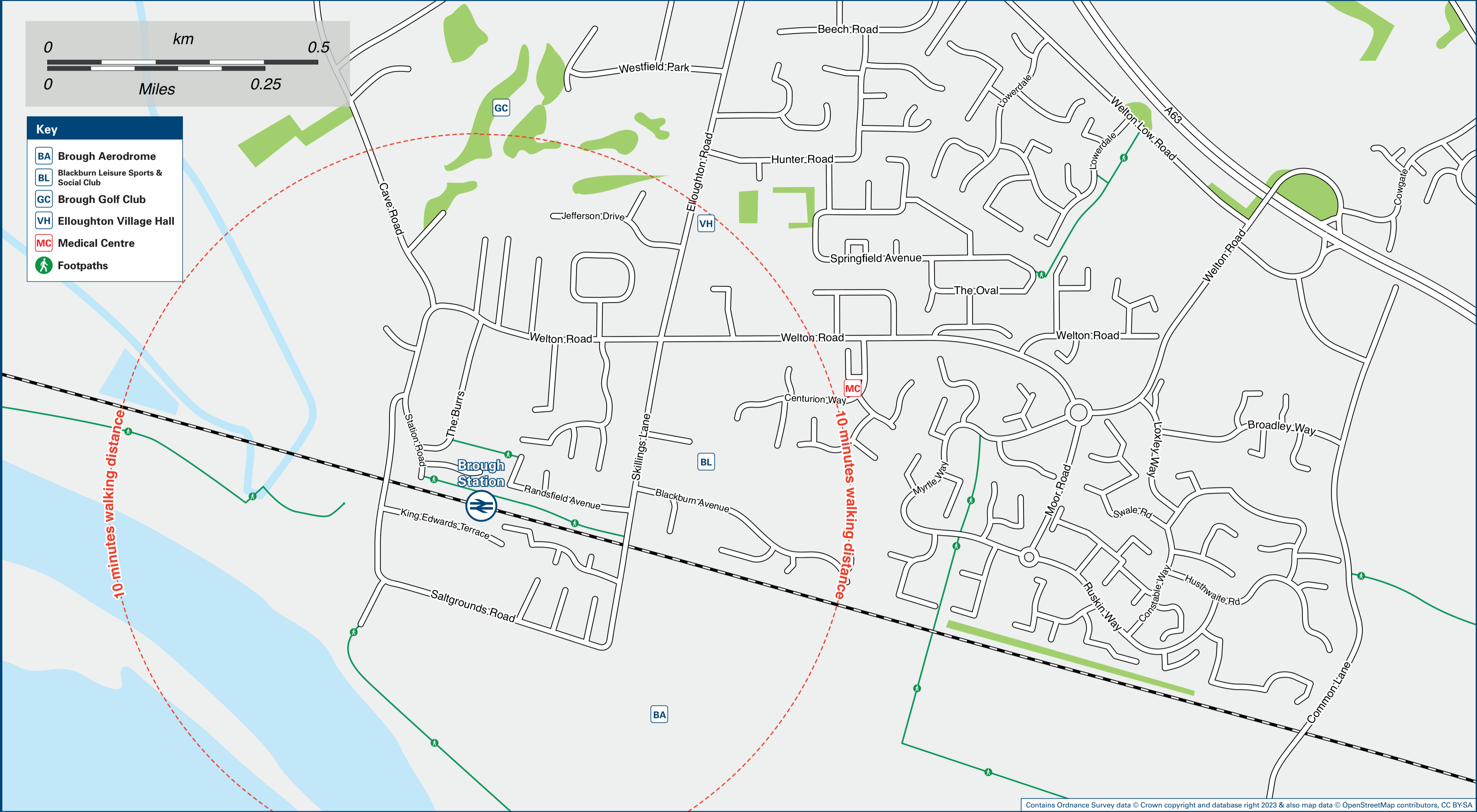




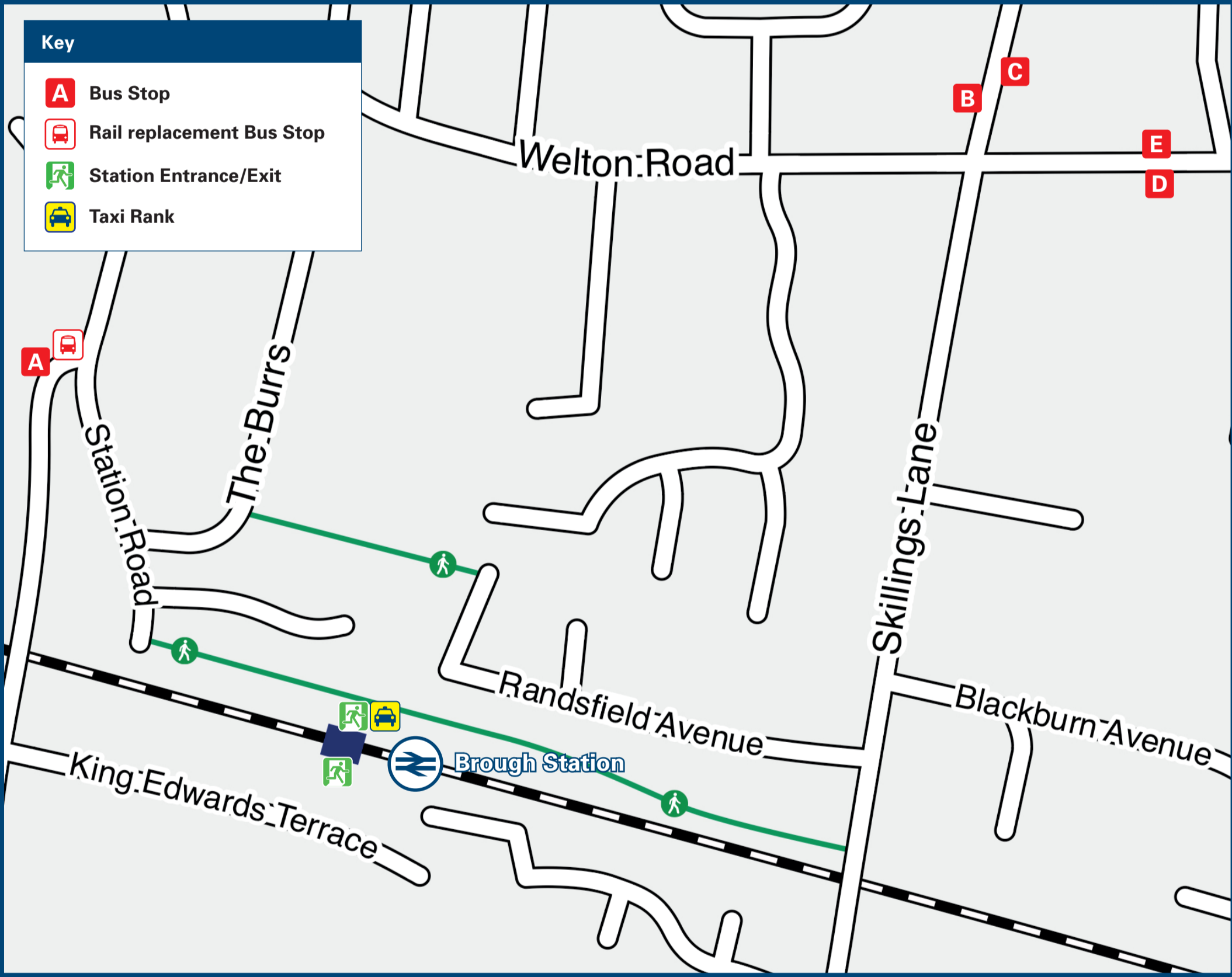
# Brough Station

## Onward Travel Information

### Local area map



### Buses



Rail replacement services at the top of Station Road, at the bus stand next to the Ferry Inn Pub.

### Main destinations by bus

(Data correct at September 2023)

DESTINATION	BUS ROUTES	BUS STOP
Elloughton (Bus Depot)	55	B, D
Eastrington	55	B, D
Gilberdyke	55	B, D
Goole	55	B, D
Howden	55	B, D
Hull	55	C, E
Hull Royal Infirmary	55	C, E
Humber Bridge Country Park	55	C, E
Melton	55	C, E
Newport	55	B, D
North Cave	55	B, D
North Ferriby	55	C, E
South Cave	55	B, D
Welton	55	C, E
Wolds (for HM Prison Everthorpe)	55	B, D

#### Notes

Bus route 55 run Mondays to Saturdays services, only.  
No bus services run from Brough on Sundays.  
For bus times and days of operation please see bus stop timetables or contact Traveline Yorkshire.  
 Direct trains operate to this destination from this station

### Taxis

Brough Station is served by a taxi rank or cab office. Check availability before travelling, and pre-book if necessary. Please consider using the following local operators: (Inclusion of this number doesn't represent any endorsement of the taxi firm)

**Brough Cars**  
01482 666 292

**Riverside Travel**  
01482 666 525

**South Cave Taxi**  
01430 422 218

### Further information about all onward travel

#### Local Cycle Info

[eastriding.gov.uk](http://eastriding.gov.uk)  
For more information about cycle routes.

#### National Cycle Info

[sustrans.org.uk](http://sustrans.org.uk)  
Sustrans is the UK's leading sustainable transport charity.

#### Bus Times

See timetable displays at bus stops.

[www.traveline.info](http://www.traveline.info)  
0871 200 22 33  
calls cost 12p per minute plus your phone company's access charge

#### NextBuses

Find the bus times for your stop.  
Search for a bus stop by entering a postcode, street & town or a stop name & town.

#### PlusBus

[plusbus.info](http://plusbus.info)  
A discount price 'bus pass' that you buy with your train ticket. It gives you unlimited bus travel around your chosen town, on participating buses.

### National Rail Enquiries

<b>Online</b> <a href="http://nationalrail.co.uk">nationalrail.co.uk</a>	<b>NRE App</b> Free National Rail Enquiries app for iOS and Android	<b>Social Media</b> <a href="https://facebook.com/nationalrailenq">facebook.com/nationalrailenq</a> @nationalrailenq	<b>Alert Me</b> You can sign up to Alert Me messages on the National Rail Enquiries website where you can receive train and platform notifications directly to your smart phone. <a href="http://nationalrail.co.uk/alertme">nationalrail.co.uk/alertme</a>	<b>Contact Centre</b> 03457 48 49 50 Calls cost no more than calls to geographic numbers (01 or 02) and may be recorded.	<b>PlusBike</b> <a href="http://nationalrail.co.uk/plusbike">nationalrail.co.uk/plusbike</a> For more information.
---	--	--	---	--	--



**National Rail**  
Britain's train companies working together



This poster shows details of popular destinations and main, frequent bus routes. Additional services may run, so please check with Traveline or see posters at local bus stops. Whilst considerable care has been taken to ensure the information contained on this poster is correct and accurate, National Rail cannot accept responsibility for any loss or inconvenience caused by any errors or omissions, or for loss, damage, injury or inconvenience relating to the cancellation, alteration, delay or diversion of a service. For any feedback, please e-mail [comments@onwardtravelposters.com](mailto:comments@onwardtravelposters.com)

Scan this code with your mobile for full station information.