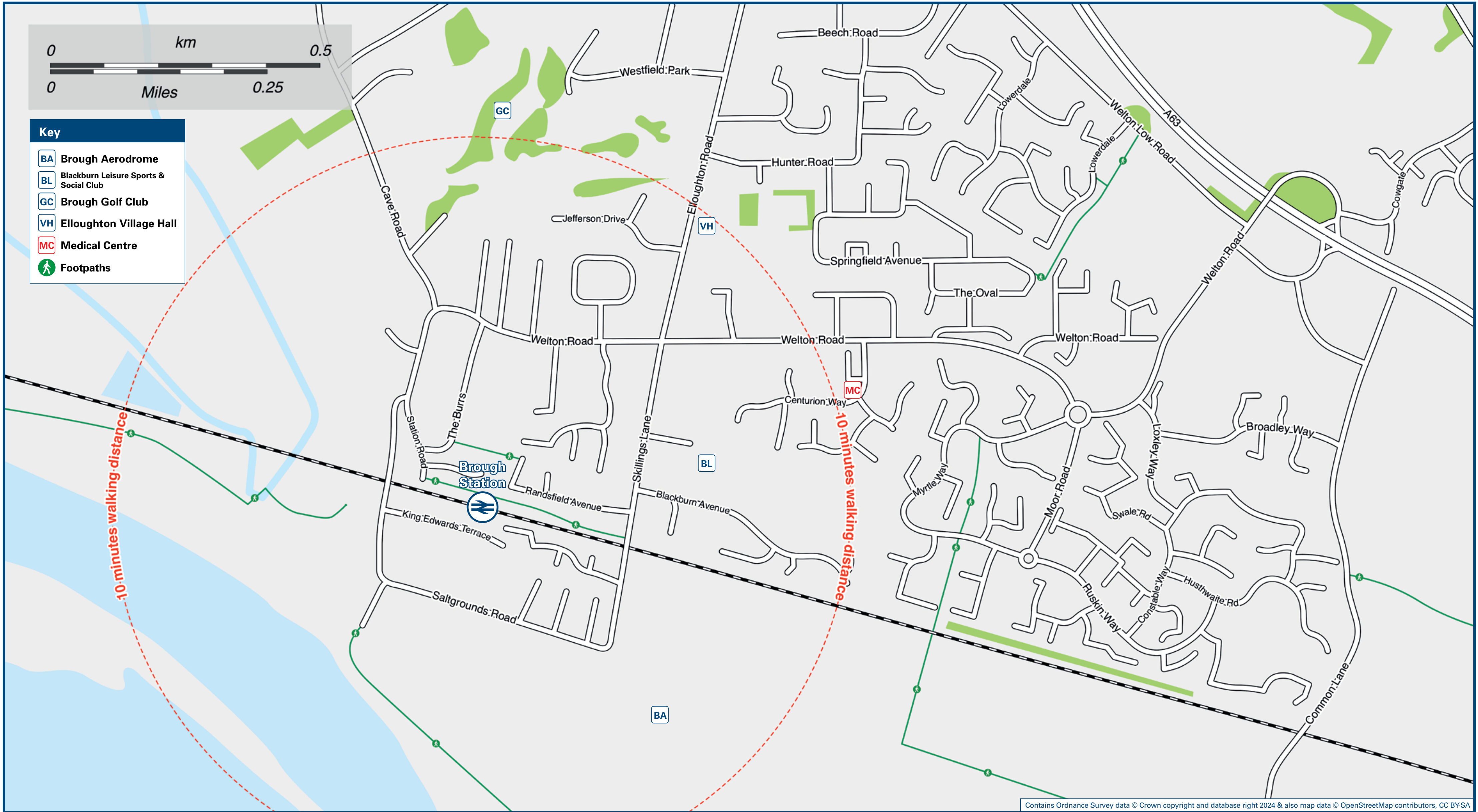




Brough Station

Onward Travel Information

Local area map



Buses



Main destinations by bus

(Data correct at September 2024)

DESTINATION	BUS ROUTES	BUS STOP
Elloughton (Bus Depot)	55	B, D
Eastrington	55	B, D
Gilberdyke	55	B, D
Goole	55	B, D
Howden	55	B, D
Hull	55	C, E
Hull Royal Infirmary	55	C, E
Humber Bridge Country Park	55	C, E
Melton	55	C, E
Newport	55	B, D
North Cave	55	B, D
North Ferriby	55	C, E
South Cave	55	B, D
Welton	55	C, E
Wolds (for HM Prison Everthorpe)	55	B, D

Notes

Bus route 55 run Mondays to Saturdays services, only.
No bus services run from Brough on Sundays.
For bus times and days of operation please see bus stop timetables or contact Traveline Yorkshire.
Direct trains operate to this destination from this station

Taxis

Brough Station is served by a taxi rank or cab office. Check availability before travelling, and pre-book if necessary. Please consider using the following local operators: (Inclusion of this number doesn't represent any endorsement of the taxi firm)

Brough Cars
01482 666 292

Riverside Travel
01482 666 525

1st Choice Taxis
07906 838 555

Further information about all onward travel

Local Cycle Info eastriding.gov.uk For more information about cycle routes.	National Cycle Info sustrans.org.uk Sustrans is the UK's leading sustainable transport charity.	Bus Times See timetable displays at bus stops. www.traveline.info 0871 200 22 33 calls cost 12p per minute plus your phone company's access charge	NextBuses Find the bus times for your stop. Search for a bus stop by entering a postcode, street & town or a stop name & town. Calls cost no more than calls to geographic numbers (01 or 02) and may be recorded.	PlusBus plusbus.info A discount price 'bus pass' that you buy with your train ticket. It gives you unlimited bus travel around your chosen town, on participating buses.
---	---	---	--	---

National Rail Enquiries

Online nationalrail.co.uk	NRE App Free National Rail Enquiries app for iOS and Android	Social Media facebook.com/nationalrailenq @nationalrailenq	Alert Me You can sign up to Alert Me messages on the National Rail Enquiries website where you can receive train and platform notifications directly to your smart phone. nationalrail.co.uk/alertme	Contact Centre 03457 48 49 50 Calls cost no more than calls to geographic numbers (01 or 02) and may be recorded.	PlusBike nationalrail.co.uk/plusbike For more information.
---	--	--	---	--	--



National Rail
Britain's train companies working together

