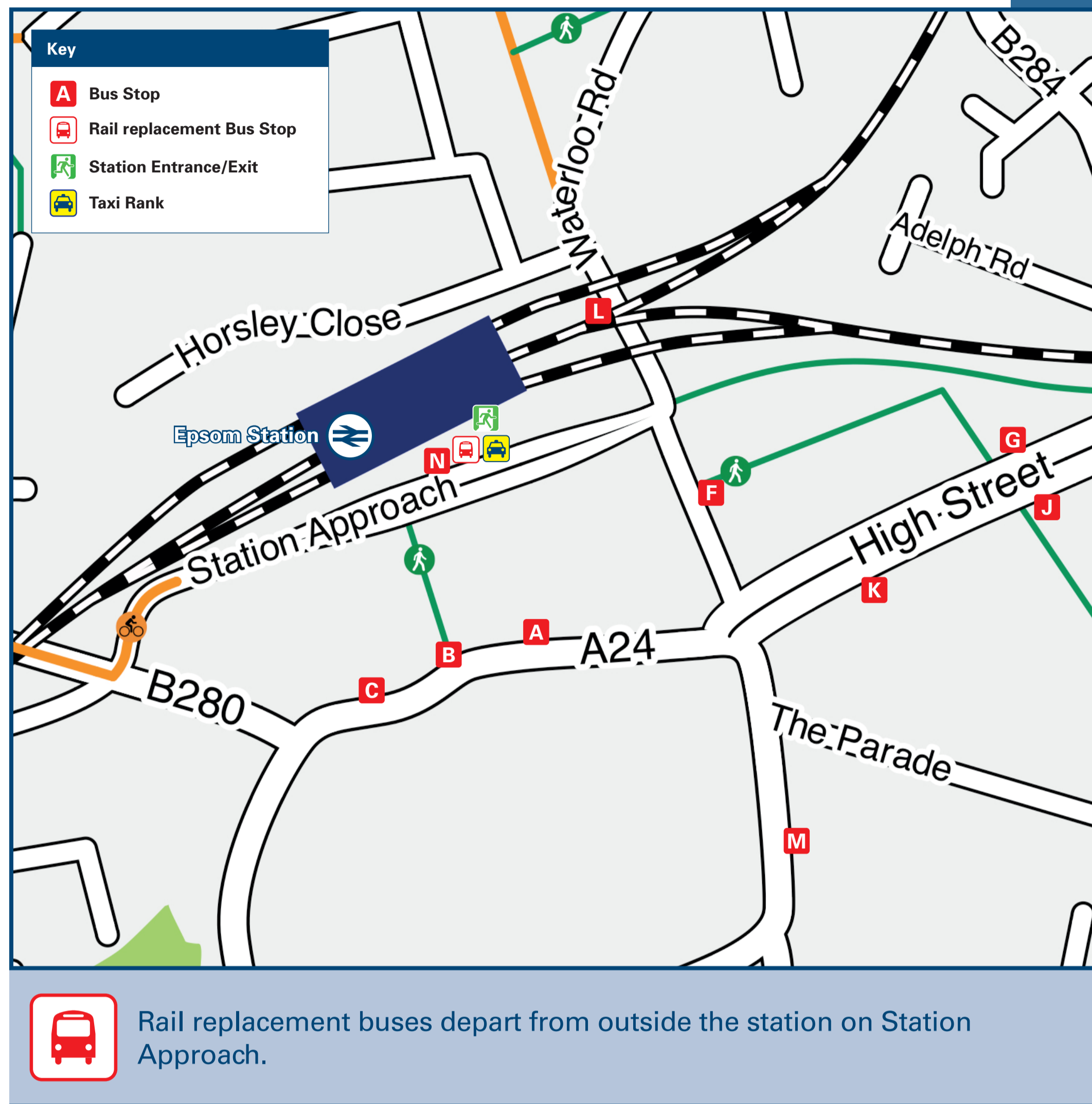




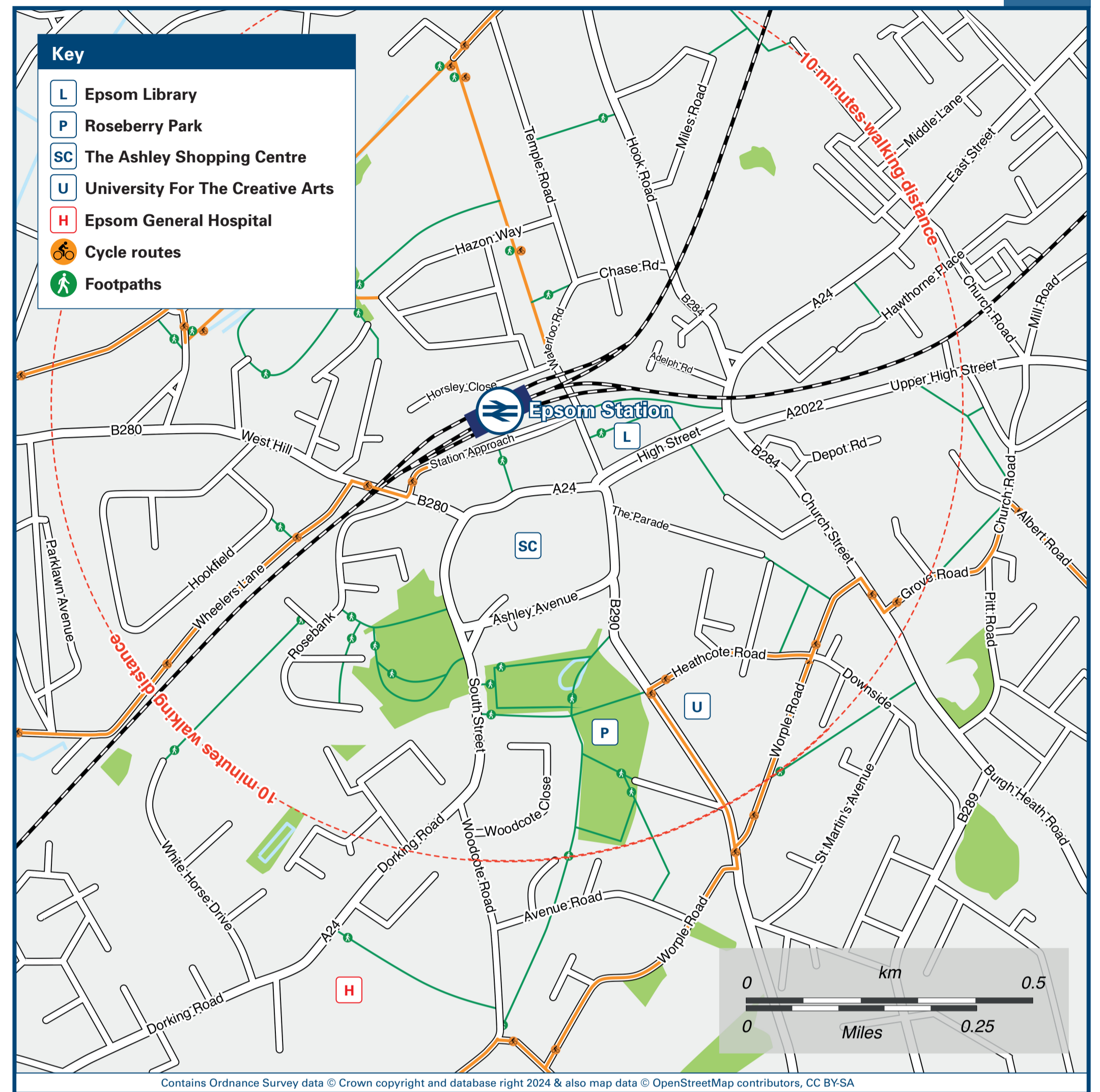
# Epsom Station

# Onward Travel Information

## Buses and Taxis



## Local area map



## Main destinations by bus

(Data correct at May 2024)

DESTINATION	BUS ROUTES	BUS STOP
Ashted	21, 408, 479	J, M, N, B
Banstead	166, 318	B, G, F, G
Box Hill (Visitor Centre)#	21	J, M
Cheam	S2	A, G
Chessington South Station	467	F, G
Chipstead Valley	166	B, G
Clarendon Park	E9	N
Cobham	408	N
Colliers Wood Station	S2	A, G
Crawley	21, 460	J, M, C
Dorking	21 (via Box Hill Visitor Centre)	J, M
East Surrey Hospital	460	C
Effingham (Village/A246 crossroads)	479	B
Epsom College	166, E5	B, G, F
Epsom General Hospital	21, 166, 293, 408, 479	J, M, N, B
Epsom Racecourse	460, 480	C
Ewell	S2, 293, 406, E16, 467	A, G, F, G
Fetcham	479	B
Gatwick Airport	460	C
Great Bookham	479	B
Headley	21	J, M

DESTINATION	BUS ROUTES	BUS STOP
Headley Court (RAF Hospital)	21	J, M
Hook	467	F, G
Horton (For Country Park)	E9	N, L
Kingston-upon-Thames	406	A
Langley Vale	418	L
Leatherhead	E5, 479	F, B
Little Bookham	21, 479	J, M, B
Longmead	479, E9	N, L
Lower Ashted	418, 21	L, J, M
Lower Kingswood	408, 479	N, B
Manor Park	460	C
Morden Station	E9	N
Noble Park	293	A
Nork	E10, 166	N, B, G
Oxshott	318	F, G
Pebblecombe	408	N
Purley	21	J, M
Redhill	166	B, G
Reigate	460	C
St Anthony's Hospital	460	C
St Helier	460	C
Stoke D'Abernon Station	293, E16	A, G
	S2	A
	408	N

DESTINATION	BUS ROUTES	BUS STOP
Stoneleigh	E16, 406	A
Surbiton (& Surbiton Hospital)	406, 418	A, A
Sutton	S2	A, G
Tadworth Station	460	C
Tattenham Corner Station	318	F, G
Tolworth	460, 480	C
Walton-on-the-Hill	406, 418	A
The Wells (The Crescent)	460	C
	408	N
	E5	F
West Ewell (Chessington Road)	E5, 418	L
Woodcote Green Road	467	F, G
Woodmanstere	E5	F
Worcester Park Station	166	B, G
	E16	A

### Notes

Bus routes 21, 166, 467, E5 and E16 operate Mondays to Saturdays. Bus routes 293, 406, 418, 460, 479, 480, E9, E10 and S2 operate a daily service. Bus routes 318 and 408 operate Mondays to Fridays only. For bus times and other bus enquiries, please contact Traveline on 0871 200 22 33.

- Direct trains operate to this destination from Epsom station.
- Direct trains operate to Ewell East and Ewell West stations from Epsom station.
- Change here for London Underground Northern Line trains towards Central London.

# Alternatively take the train to Boxhill & Westhumble from where it's a 40 minutes walk via Zig-Zag path to Box Hill Visitor Centre.

## Taxis

Epsom is a major station where taxis are usually available on a rank. Advance booking is not normally necessary, unless arriving early in the morning or late at night. Operators who may accept bookings include: (Inclusion of this number doesn't represent any endorsement of the taxi firm)

**Xpert Cars**  
01372 702 000

**Clocktower Cars**  
01372 747 747

**Rent A Taxi**  
01372 740 500

## Further information about all onward travel

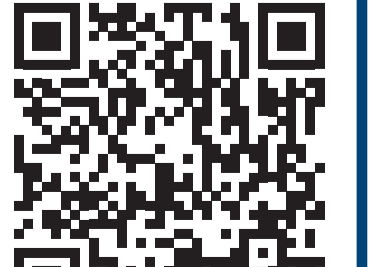
<b>Local Cycle Info</b> epsom-ewell.gov.uk For more information about cycle routes.	<b>National Cycle Info</b> sustrans.org.uk Sustrans is the UK's leading sustainable transport charity.	<b>Bus Times</b> See timetable displays at bus stops. www.traveline.info 0871 200 22 33 call cost 13p per minute plus your phone company's access charge	<b>NextBuses</b> mobi Find the bus times for your stop. Search for a bus stop by entering a postcode, street & town or a stop name & town.	<b>PlusBus</b> plusbus.info A discount price 'bus pass' that you buy with your train ticket. It gives you unlimited bus travel around your chosen town, on participating buses.
---	--	--	--	---

## National Rail Enquiries

<b>Online</b> nationalrail.co.uk	<b>NRE App</b> Free National Rail Enquiries app for iOS and Android	<b>Social Media</b> facebook.com/nationalrailenq @nationalrailenq	<b>Alert Me</b> You can sign up to Alert Me messages on the National Rail Enquiries website where you can receive train and platform notifications directly to your smart phone. nationalrail.co.uk/alertme	<b>Contact Centre</b> 03457 48 49 50 Calls cost no more than calls to geographic numbers (01 or 02) and may be recorded.	<b>PlusBike</b> nationalrail.co.uk/plusbike For more information.
-------------------------------------	--	---	---	--	---



**National Rail**  
Britain's train companies working together



This poster shows details of popular destinations and main, frequent bus routes. Additional services may run, so please check with Traveline or see posters at local bus stops. Whilst considerable care has been taken to ensure the information contained on this poster is correct and accurate, National Rail cannot accept responsibility for any loss or inconvenience caused by any errors or omissions, or for loss, damage, injury or inconvenience relating to the cancellation, alteration, delay or diversion of a service. For any feedback, please e-mail comments@onwardtravelposters.com

Scan this code with your mobile for full station information.