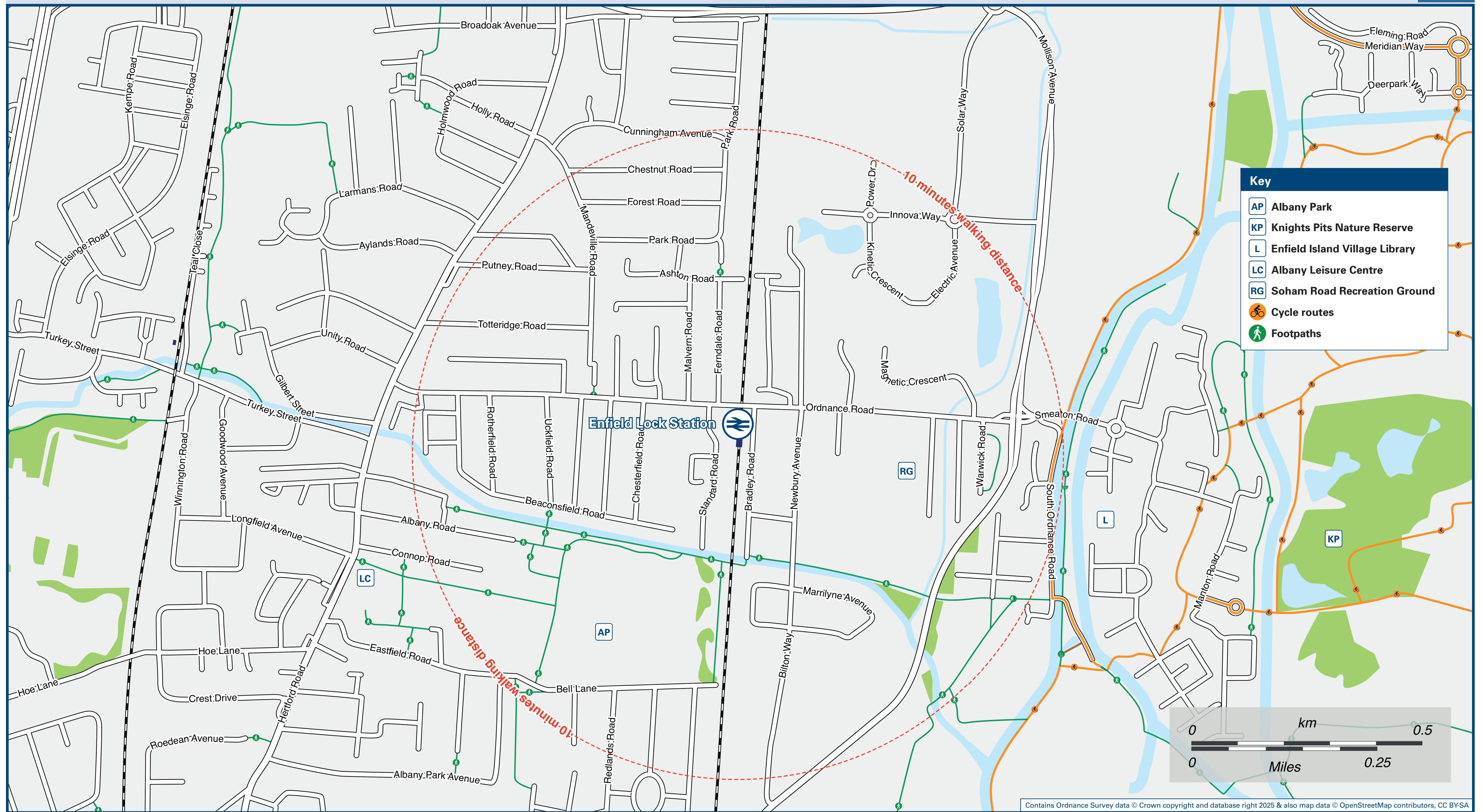




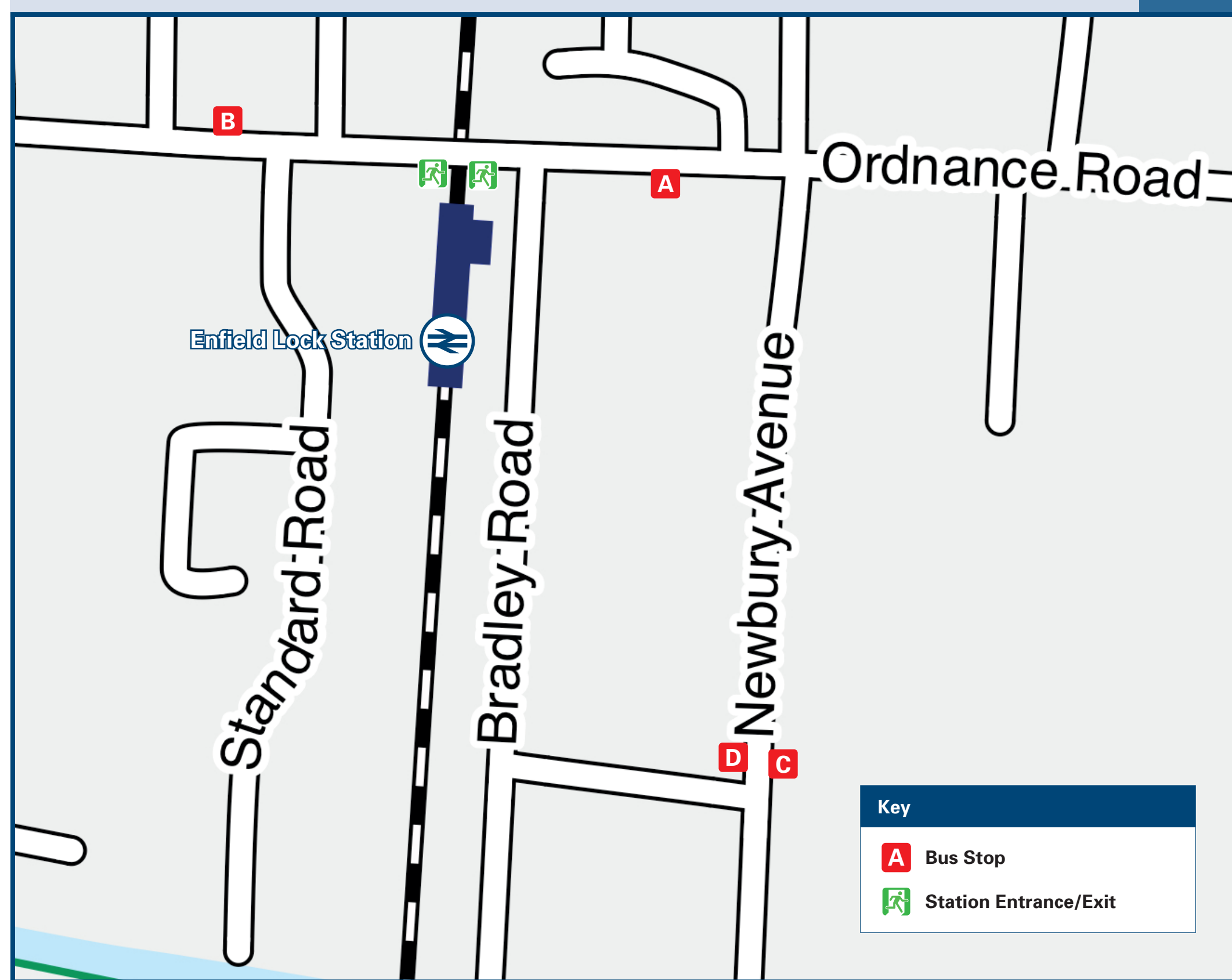
Enfield Lock Station

Onward Travel Information

Local area map



Buses



Rail replacement bus services do not serve this station. A diversionary rail route is available.

Main destinations by bus

(Data correct at September 2025)

DESTINATION	BUS ROUTES	BUS STOP
Brimsdown	491	C
Edmonton Green	491	C
Enfield Bus Garage	121	A
Enfield Chase Station	121	A
Enfield Lock (Island Village)	121	B
Enfield Town Station	491	D
Freezy Water	121	A
Lower Edmonton	491	C
North Middlesex Hospital	491	C
Oakwood Station	121	A
Ponders End	491	C
Southgate Station	121	A
Turkey Street (Totteridge Road and Albany Leisure Centre)	121	A
Turnpike Lane	121	A
Waltham Cross	491	D
Wood Green Station	121	A

Notes

- Bus routes 121 and 491 run daily services, Mondays to Sundays. For bus times and days of operation please contact Traveline on www.traveline.info or call: 0871 200 22 33
- Direct trains operate to this destination from this station
- Change here for connecting London Underground services.
- Change here for connecting London Overground services.

Taxis

Enfield Lock Station has no taxi rank or cab office. Advance booking is essential, please consider using the following local operators: (Inclusion of this number doesn't represent any endorsement of the taxi firm)

Green Street Cars
020 8443 2773

Jowle Cars
01992 765 550

Network Cars
01992 700 200

Further information about all onward travel

Local Cycle Info enfield.gov.uk For more information about cycle routes.	National Cycle Info sustrans.org.uk Sustrans is the UK's leading sustainable transport charity.	Bus Times See timetable displays at bus stops. www.traveline.info 0871 200 22 33 call cost 12p per minute plus your phone company's access charge	NextBuses Find the bus times for your stop. Search for a bus stop by entering a postcode, street & town or a stop name & town.	PlusBus plusbus.info A discount priced 'bus pass' that you buy with your train ticket. It gives you unlimited bus travel around your chosen town, on participating buses.
---	---	--	--	---

National Rail Enquiries

Online nationalrail.co.uk	NRE App Free National Rail Enquiries app for iOS and Android	Social Media facebook.com/nationalrailenq @nationalrailenq	Alert Me You can sign up to Alert Me messages on the National Rail Enquiries website where you can receive train and platform notifications directly to your smart phone. nationalrail.co.uk/alertme	Contact Centre 03457 48 49 50 Calls cost no more than calls to geographic numbers (01 or 02) and may be recorded.	PlusBike nationalrail.co.uk/plusbike For more information.
---	--	--	---	--	--



National Rail
Britain's train companies working together

