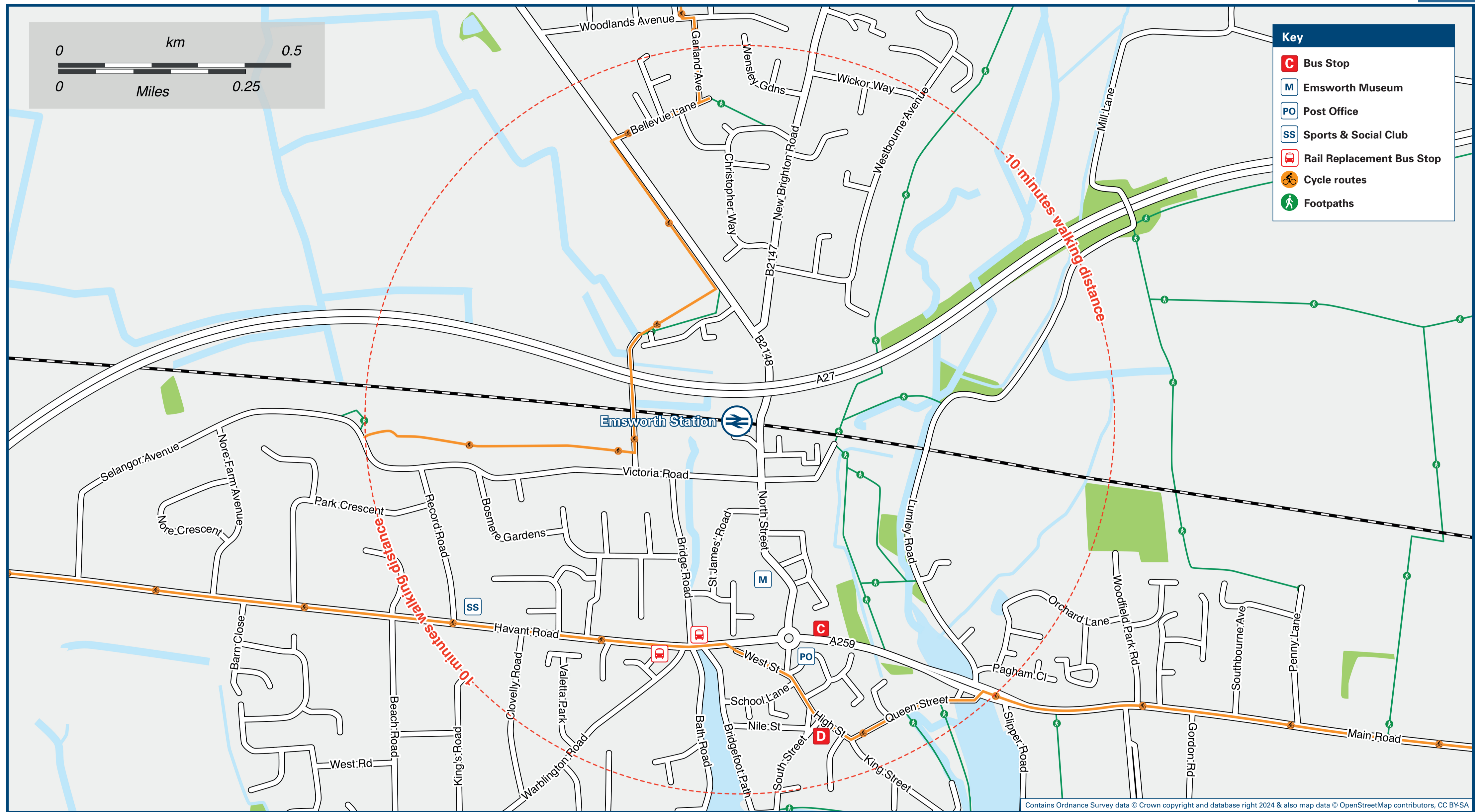




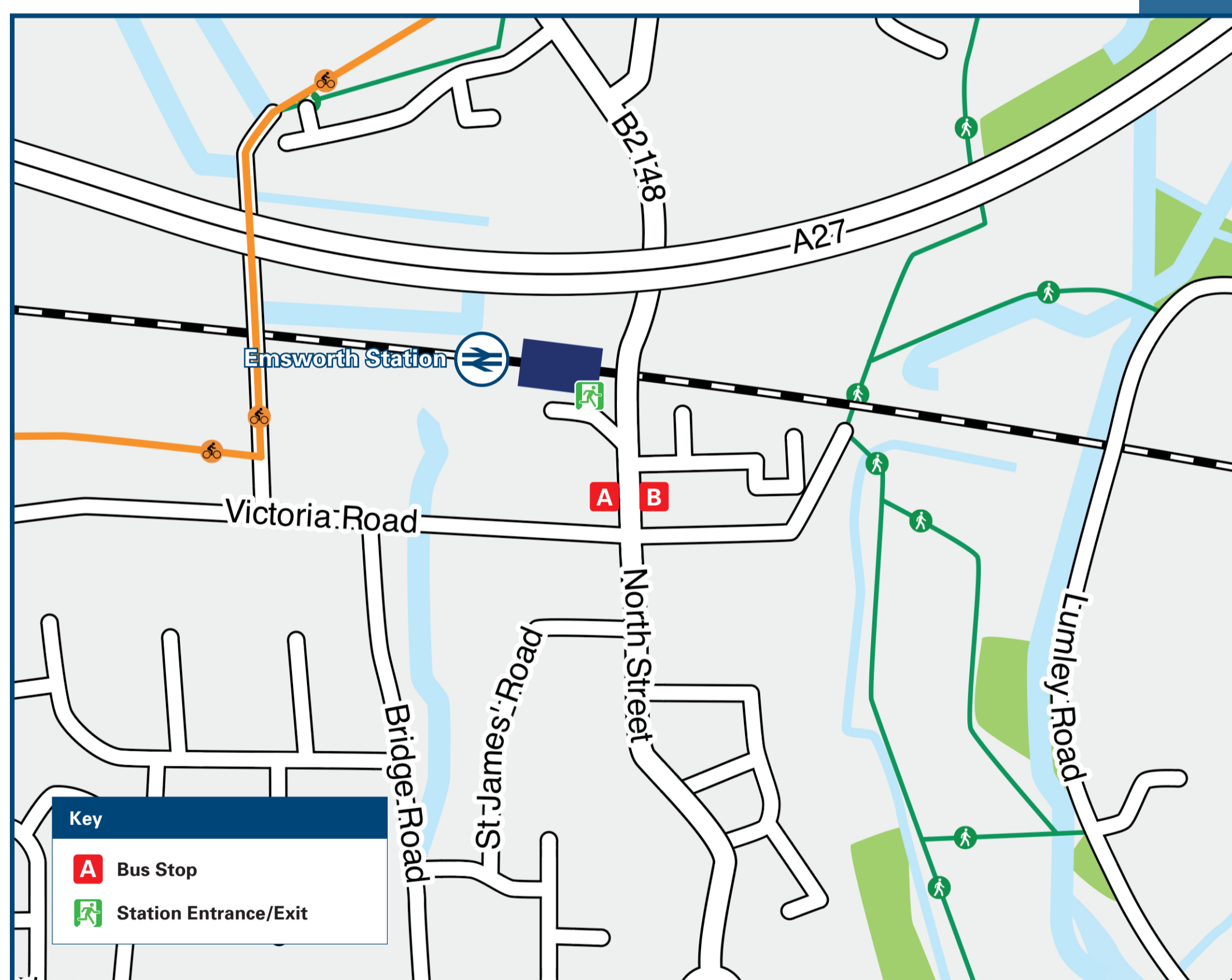
Emsworth Station

Onward Travel Information

Local area map



Buses



Rail replacement buses depart down from the station on A259 Havant Road (see Local area map).

Main destinations by bus

(Data correct at July 2024)

DESTINATION	BUS ROUTES	BUS STOP
Bosham	700	C
Denvilles	27	A
Durrants	27	A
Emsworth Town Centre (Baptist Church)	27	B
Emsworth Town Centre (The Square)	10 minutes walk from this station via North Street and High Street (see Local area map)	
Havant	27	A
	700	D
Hermitage	700	C
Leigh Park	27	A
New Brighton Road	27	A
Nutbourne	700	C
Rowland's Castle	27	A
Southbourne	700	C
	27	A
Warblington	700	D

Notes

- Bus route 27 operates a limited service on Mondays to Fridays, only. No Saturdays or Sundays service.
- Bus route 700 operates daily - see Local area map for bus stops (C) towards Chichester and stop (D) towards Portsmouth.
- For bus times and other bus enquiries, please contact TraveLine on www.traveLine.info, or call 0871 200 22 33.
- Direct trains operate to this destination from this Station.
- AONB Chichester Harbour AONB

Taxis

Emsworth Station has no taxi rank or cab office. Advance booking is essential, please consider using the following local operators: (Inclusion of this number doesn't represent any endorsement of the taxi firm)

Alpha Cars
023 9300 0001

John Hall's Taxis
07886 509 140

Havant Ride
023 9232 5325

Further information about all onward travel

Local Cycle Info havant.gov.uk For more information about cycle routes.	National Cycle Info sustrans.org.uk Sustrans is the UK's leading sustainable transport charity.	Bus Times travelinesw.com See timetable displays at bus stops.	NextBuses Find the bus times for your stop. Search for a bus stop by entering a postcode, street & town or a stop name & town.	PlusBus plusbus.info A discount price 'bus pass' that you buy with your train ticket. It gives you unlimited bus travel around your chosen town, on participating buses.
---	---	--	--	--

National Rail Enquiries

Online nationalrail.co.uk	NRE App Free National Rail Enquiries app for iOS and Android	Social Media facebook.com/nationalrailenq @nationalrailenq	Alert Me You can sign up to Alert Me messages on the National Rail Enquiries website where you can receive train and platform notifications directly to your smart phone. nationalrail.co.uk/alertme	Contact Centre 03457 48 49 50 Calls cost no more than calls to geographic numbers (01 or 02) and may be recorded.	PlusBike nationalrail.co.uk/plusbike For more information.
---	--	--	---	--	--



National Rail
Britain's train companies working together



This poster shows details of popular destinations and main, frequent bus routes. Additional services may run, so please check with TraveLine or see posters at local bus stops. Whilst considerable care has been taken to ensure the information contained on this poster is correct and accurate, National Rail cannot accept responsibility for any loss or inconvenience caused by any errors or omissions, or for loss, damage, injury or inconvenience relating to the cancellation, alteration, delay or diversion of a service. For any feedback, please e-mail comments@onwardtravelposters.com

Scan this code with your mobile for full station information.