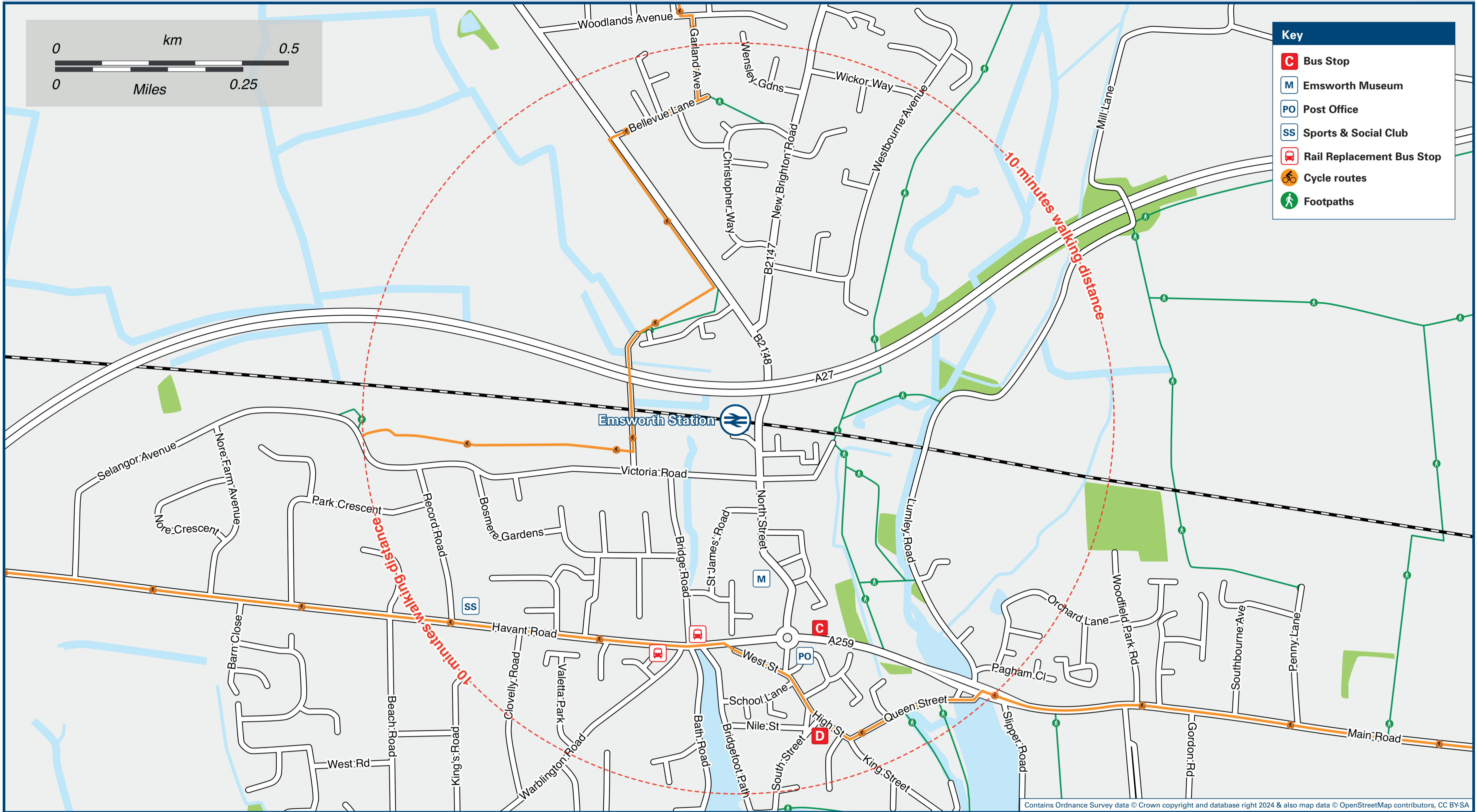




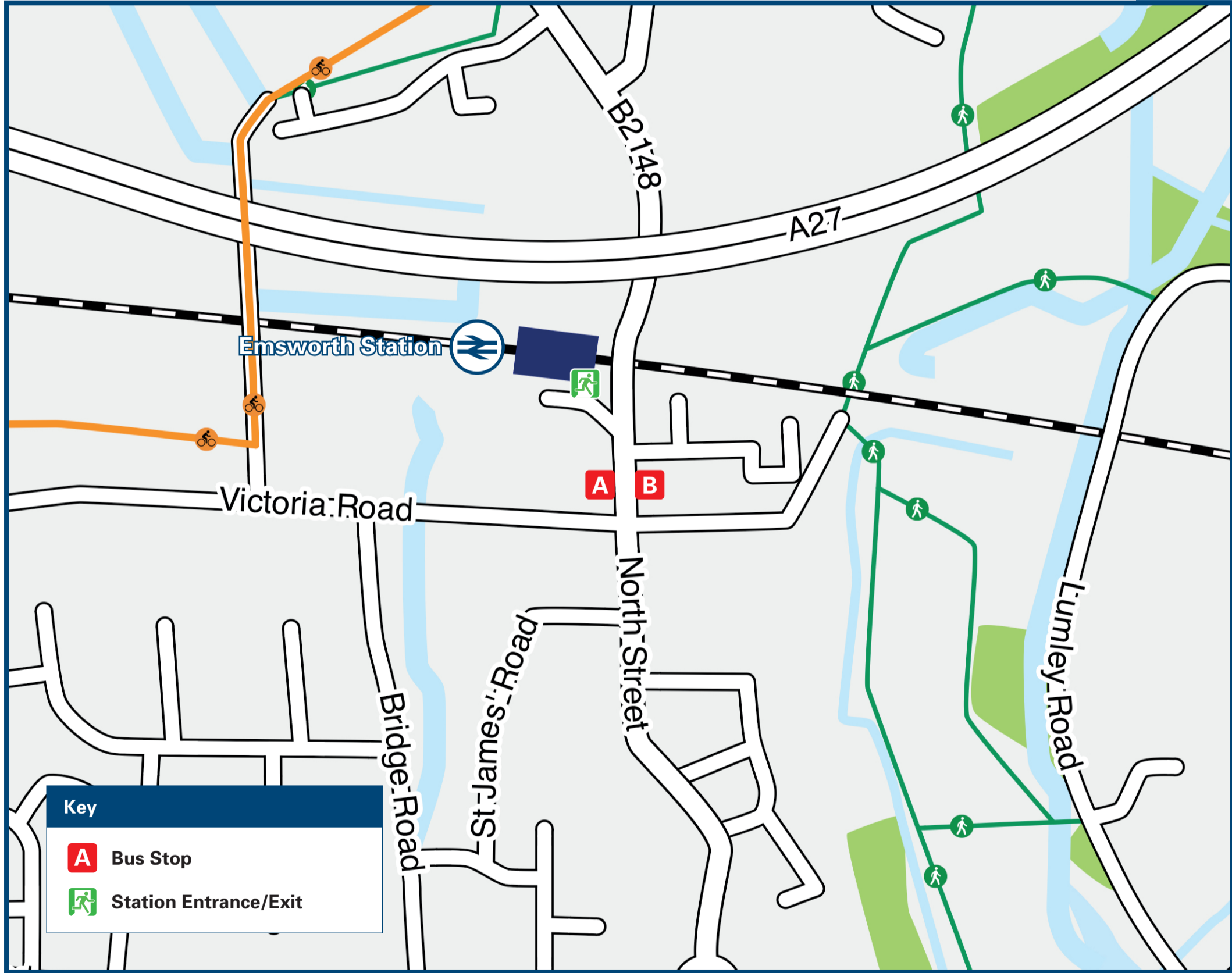
Emsworth Station

Onward Travel Information

Local area map



Buses



Rail replacement buses depart down from the station on A259 Havant Road (see Local area map).

Main destinations by bus

(Data correct at July 2025)

DESTINATION	BUS ROUTES	BUS STOP
Bosham	700	C
Denvilles	27#	A
Durrants	27#	A
Emsworth Town Centre (Baptist Church)	27#	B
Emsworth Town Centre (The Square)	10 minutes walk from this station via North Street and High Street (see Local area map)	
Havant	27#	A
	700	D
Hermitage	700	C
Leigh Park	27#	A
New Brighton Road	27#	A
Nutbourne	700	C
Rowland's Castle	27#	A
Southbourne	700	C
	27#	A
Warblington	700	D

Notes

Bus route 700 operates daily - see Local area map for bus stops **A** towards Chichester and stop **D** towards Portsmouth.
For bus times and days of operation please contact Traveline on www.traveline.info or call: 0871 200 22 33
• Direct trains operate to this destination from this Station.
Bus route 27 operates a limited service on Mondays to Fridays, only. No Saturdays or Sundays service.
AONB Chichester Harbour AONB

Taxis

Emsworth Station has no taxi rank or cab office. Advance booking is essential, please consider using the following local operators: (Inclusion of this number doesn't represent any endorsement of the taxi firm)

Havant Ride
023 9232 5325

Alpha Cars
023 9278 7878

Further information about all onward travel

Local Cycle Info

havant.gov.uk

For more information about cycle routes.

National Cycle Info

sustrans.org.uk

Sustrans is the UK's leading sustainable transport charity.

Bus Times

travelinesw.com

See timetable displays at bus stops.

NextBuses

[Download on the App Store](https://play.google.com/store/apps/details?id=com.nextbuses)

Find the bus times for your stop.

Search for a bus stop by entering a postcode, street & town or a stop name & town.

PlusBus

plusbus.info

A discount price 'bus pass' that you buy with your train ticket. It gives you unlimited bus travel around your chosen town, on participating buses.

National Rail Enquiries

Online

nationalrail.co.uk

NRE App

Free National Rail Enquiries app for iOS and Android

Social Media

[facebook.com/nationalrailenq](https://www.facebook.com/nationalrailenq)
[@nationalrailenq](https://twitter.com/nationalrailenq)

Alert Me

You can sign up to Alert Me messages on the National Rail Enquiries website where you can receive train and platform notifications directly to your smart phone.
nationalrail.co.uk/alertme

Contact Centre

03457 48 49 50

Calls cost no more than calls to geographic numbers (01 or 02) and may be recorded.

PlusBike

nationalrail.co.uk/plusbike

For more information.



National Rail
Britain's train companies working together

