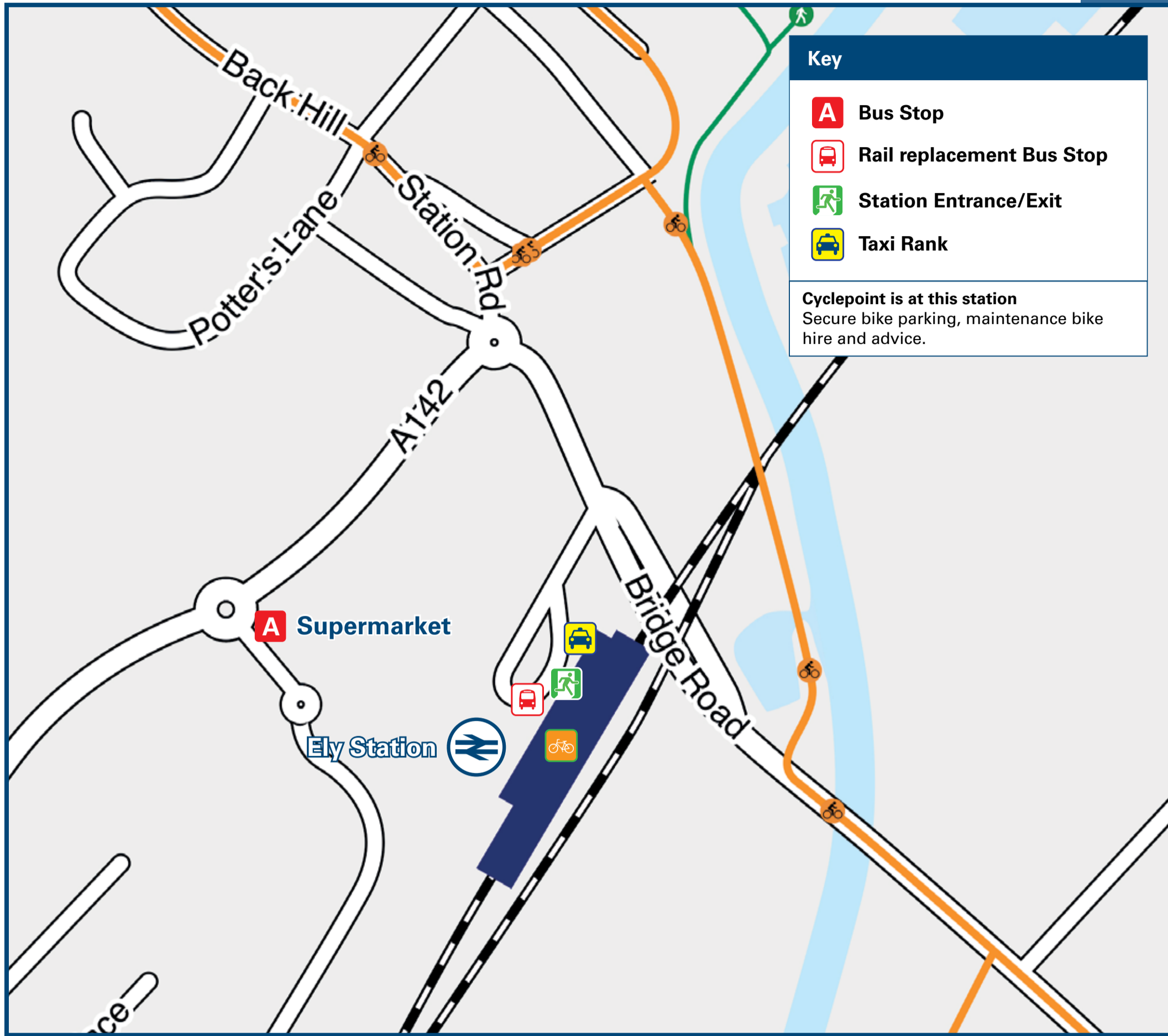




Ely Station

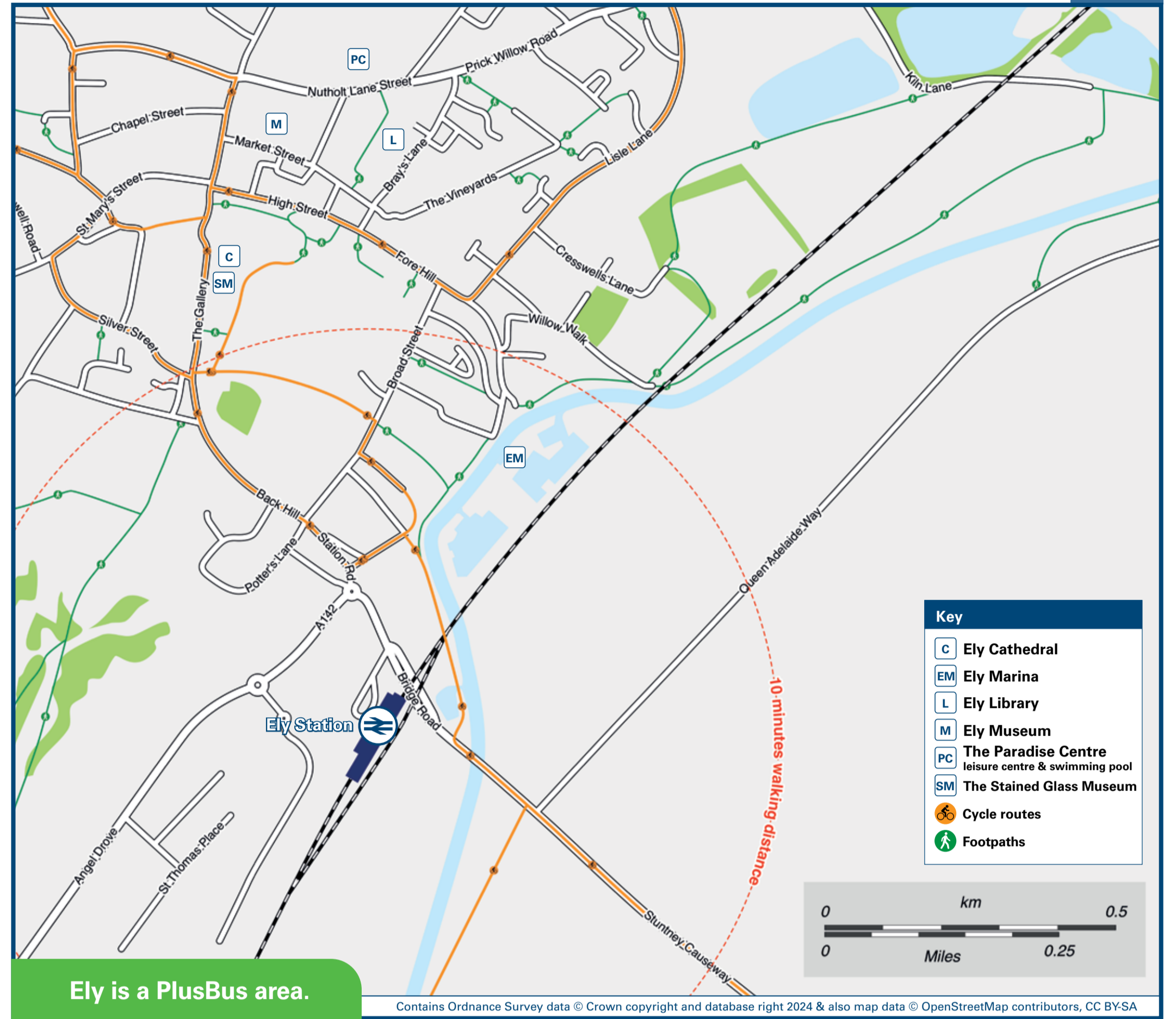
Onward Travel Information

Buses and Taxis



Rail replacement buses/coaches will depart from the front of the station.

Local area map



Ely is a PlusBus area.



PlusBus is a discount price 'bus pass' that you buy with your train ticket. It gives you unlimited bus travel around your chosen town, on participating buses. Visit www.plusbus.info

Main destinations by bus

(Data correct at July 2024)



DESTINATION	BUS ROUTES	BUS STOP
Cambridge	9	A
Chatteris	Ely Zipper 2	Market Street
Ely Cathedral	15 minutes walk from this station via Station Road, Back Hill and The Gallery	
Ely City Centre (Market Street)	9, 112, 125*, Ely Zipper	A
Ely College	125*	A
	Ely Zipper 2**, 9A, 125*	Market Street
Ely Lancaster Way Business Park	Ely Zipper	A
	Ely Zipper, Ely Zipper 2	Market Street
Ely Leisure Village	125*	A
	Ely Zipper 2**, 9A, 125*	Market Street
Ely Princess of Wales Hospital	9	A
	9A	Market Street

DESTINATION	BUS ROUTES	BUS STOP
Fordham	112	A
Haddenham	Ely Zipper	A
Landbeach Research Park	9	A
Little Downham	125*	A
Little Thetford	9, Ely Zipper	A
Littleport	9	A
Mepal	Ely Zipper 2	Market Street
Newmarket	112	A
Soham	112	A
Stretham	9, Ely Zipper	A
Stuntney	112	A
Sutton	Ely Zipper 2	Market Street

DESTINATION	BUS ROUTES	BUS STOP
Wilburton	Ely Zipper	A
Witcham Toll (A142)	Ely Zipper 2	Market Street
Witcham (Village)	Ely Zipper	A
Witchford (Main Street)	Ely Zipper 2	Market Street

Notes

- PlusBus destination, please see below for details.
- Bus routes 9, 9A, 112, 125*, Ely Zipper and Ely Zipper 2 operate Mondays to Saturdays. No Sunday service.
- For bus times, please see bus stop timetables or contact Traveline on 0871 200 22 33.
- Direct trains operate to this destination from this station.
- Bus route 125 operates 3 buses a day Mondays to Saturdays only.
- Bus route Ely Zipper 2 operates Saturdays only to Ely Leisure Village and Ely College (also 1 early morning bus Mondays to Fridays to Ely College when open).

Taxis

Ely station is served by a taxi rank or a cab office. Check availability before travelling and pre-book if necessary. Please consider using the following operators: (Inclusion of this number doesn't represent any endorsement of the taxi firm)

Ely Cabs
01353 505 040

Fencabs
01353 669 966

A2B Taxis
01353 661 010

Alan's Taxis
01353 665 050

Further information about all onward travel

Local Cycle Info eastcamps.co.uk For more information about cycle routes.	National Cycle Info sustrans.org.uk Sustrans is the UK's leading sustainable transport charity.	Bus Times See timetable displays at bus stops. www.traveline.info 0871 200 22 33 call cost 12p per minute plus your phone company's access charge	NextBuses Find the bus times for your stop. Search for a bus stop by entering a postcode, street & town or a stop name & town.	PlusBus plusbus.info A discount price 'bus pass' that you buy with your train ticket. It gives you unlimited bus travel around your chosen town, on participating buses.
---	---	--	---	---

National Rail Enquiries

Online nationalrail.co.uk	NRE App Free National Rail Enquiries app for iOS and Android	Social Media facebook.com/nationalrailenq @nationalrailenq	Alert Me You can sign up to Alert Me messages on the National Rail Enquiries website where you can receive train and platform notifications directly to your smart phone. nationalrail.co.uk/alertme	Contact Centre 03457 48 49 50 Calls cost no more than calls to geographic numbers (01 or 02) and may be recorded.	PlusBike nationalrail.co.uk/plusbike For more information.
---	--	---	---	--	--



National Rail
Britain's train companies working together



This poster shows details of popular destinations and main, frequent bus routes. Additional services may run, so please check with Traveline or see posters at local bus stops. Whilst considerable care has been taken to ensure the information contained on this poster is correct and accurate, National Rail cannot accept responsibility for any loss or inconvenience caused by any errors or omissions, or for loss, damage, injury or inconvenience relating to the cancellation, alteration, delay or diversion of a service. For any feedback, please e-mail comments@onwardtravelposters.com

Scan this code with your mobile to take this poster with you.