



# East Grinstead Station

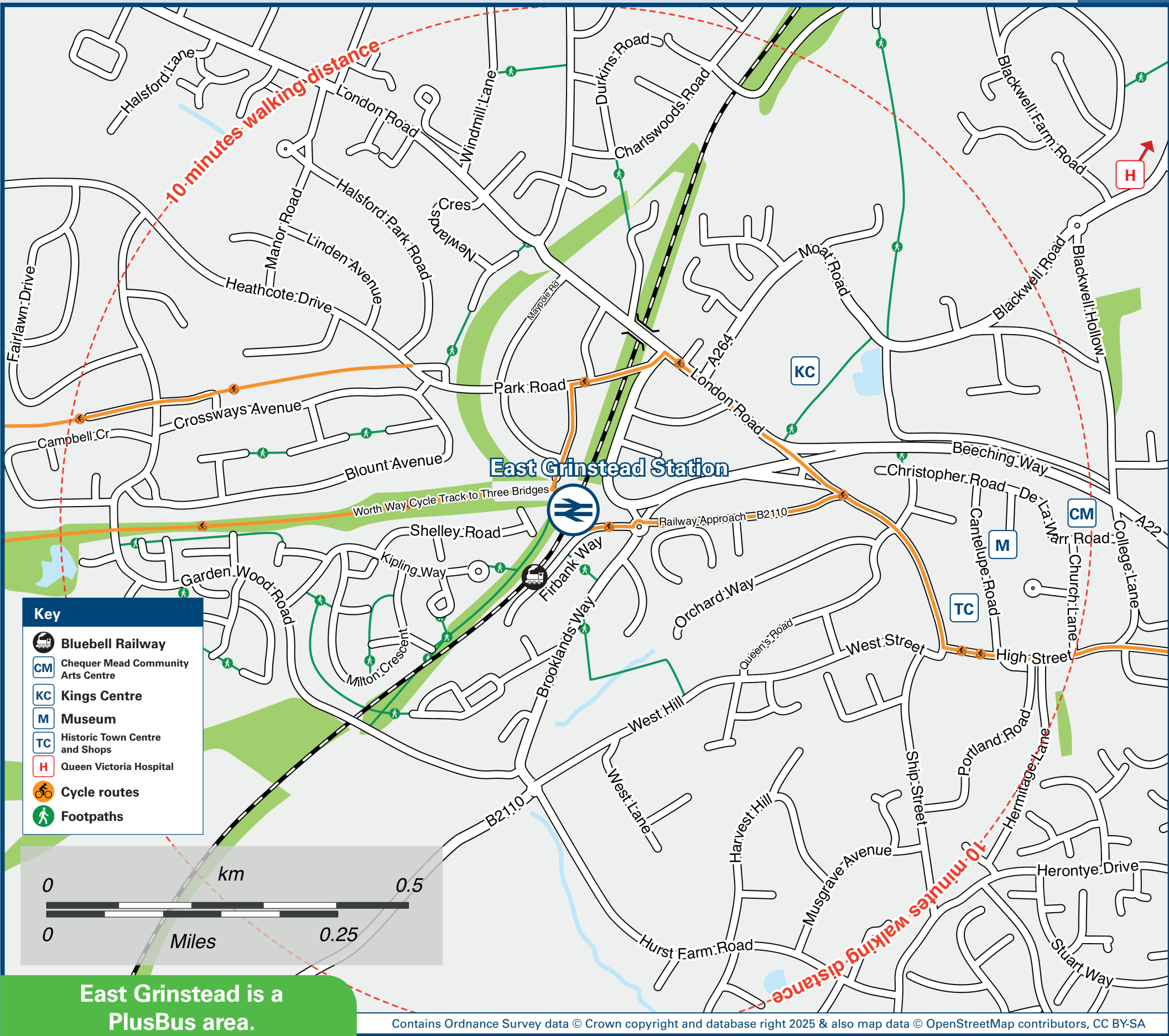
## Onward Travel Information

### Buses and Taxis



Rail Replacement buses depart from the station front.

### Local area map



**PlusBus** is a discount price 'bus pass' that you buy with your train ticket. It gives you unlimited bus travel around your chosen town, on participating buses. Visit [www.plusbus.info](http://www.plusbus.info)

### Main destinations by bus

(Data correct at July 2025)



DESTINATION	BUS ROUTES	BUS STOP
Ashurst Wood	261**, 270, 291	A
Blindley Heath	409	A
Brighton (City Centre) ⇄	270	A
Burgess Hill ⇄	270	A
Caterham and Caterham-on-the-Hill ⇄	400, 409	A
Chelwood Common	270	A
Chelwood Gate	270	A
Coleman's Hatch	291	A
Copthorne Hotel	400	A
Copthorne Village	281	B
Copthorne West	291	A
Crawley ⇄	84**, 281	B
Crawley Down	291, 400	A
Danehill	281	B
Dormansland	291	A
East Grinstead Town area -		
Baldwins Hill	409	A
Hurst Farm Road (Dunnings Road)	84**	B
Garden Wood Road	281	B
Herontye Drive	84**	M
High Street (War Memorial) ③	261**, 270, 281, 291	A
Imberhome Lower and Upper Schools	84**	M
Lewes Road	400	T
Lingfield Road	281	B
London Road	270, 281, 291, 400, 485#	A
Queen Victoria Hospital	84**	M
Three Bridges Station ⇄	281	A
Worsted Farm Estate	400	T

DESTINATION	BUS ROUTES	BUS STOP
- Sackville College and School	84**	M
- Stone Quarry Estate	261**, 270, 281, 291	A
- Worsted Farm Estate	281	A
East Surrey Hospital	400	A
Felbridge	281	B
Felcourt	291, 400, 485#	A
Forest Row	409	A
Gatwick Airport (South Terminal) ⇄	261**, 270, 291	A
Godstone ⇄	400	A
Groombridge (for Spa Valley Railway) ④	400, 409	A
Hassocks ⇄	291	A
Hartfield (for Pooh Corner)	270	A
Haywards Heath ⇄	270	A
Horsted Keynes (Village Centre)	270	A
Horsted Keynes Station (for the Bluebell Railway) ④⑤	270*	A
Langton Green	281	A
Lindfield	270	A
Lingfield (Railway Station) ④	281	A
Lingfield (Village Centre, War Memorial)	281, 409	A
Lingfield Park Racecourse	281	A
Maresfield	281	A
Newchapel (London Temple)	261**	A
Nutley	485#	A
Princess Royal Hospital (Haywards Heath)	261**	A
Redhill (Bus Station) ⇄	270	A
Saint Hill Green	400	A
Sharpthorne	84**	B
South Godstone (Railway Station) ⇄	84**	B
South Godstone (Village Centre)	409	A
Standen House & Garden (National Trust)	409	A
Three Bridges Station ⇄	84**, 281	B
	291, 400	A

DESTINATION	BUS ROUTES	BUS STOP
Tulleys Farm (for World of Water)	84**	B
Tunbridge Wells (Railway Station & Town Centre) ⇄	291	A
Turners Hill Village and Turners Hill Park	84**	B
Uckfield ⇄	261**	A
West Hoathly	84**	B
Withyham	291	A
Wych Cross	261**, 270	A

#### Notes

- **PlusBus** destination, please see below for details.
- Bus routes 281 and 409 operate Mondays to Saturdays.
- Bus routes 270, 291 and 400 operate daily.
- For bus times and days of operation please contact Traveline on [www.traveline.info](http://www.traveline.info) or call: 0871 200 22 33
- ④ Direct trains operate to this destination from this Station
- ⑤ Alternatively change trains at Hurst Green for Edenbridge Town station.
- ⇄ Change here for connecting National Rail services.
- ④ Alight in Groombridge for the Spa Valley Railway. [www.spavalleyrailway.co.uk](http://www.spavalleyrailway.co.uk), or call 01892 537 715 for general enquiries.
- ④⑤ The Bluebell Railway runs from East Grinstead to Kingscote, Horsted Keynes and Sheffield Park stations call 01825 720 800 for general enquiries.
- ③ It's a 10 minutes walk from this station to East Grinstead High Street and War Memorial.
- \* Bus route 270 serves Horsted Keynes Station on Saturdays, Sundays and Bank Holidays only.
- ~ Entrance to the Bluebell Railway Station platform is on Firbank Way (see Buses and Taxis map).
- # Bus route 485 operates a limited daytime service on Mondays to Fridays, only.
- \*\* Bus routes 84 & 261 operate limited daytime Mondays to Saturdays service, only.
- AONB High Weald (AONB) [www.highweald.org](http://www.highweald.org)

### Taxis

East Grinstead station is served by a taxi rank or cab office. Check availability before travelling, and pre-book if necessary. Please consider using the following local operators: (Inclusion of this number doesn't represent any endorsement of the taxi firm)

**Meridian Carz**  
01342 326 595

**Western Cars**  
01342 300 000

**Evo Taxis**  
01342 324 444

### Further information about all onward travel

#### Local Cycle Info

[eastgrinstead.gov.uk](http://eastgrinstead.gov.uk)  
For more information about cycle routes.

#### National Cycle Info

[sustrans.org.uk](http://sustrans.org.uk)  
Sustrans is the UK's leading sustainable transport charity.

#### Bus Times

See timetable displays at bus stops.

[www.traveline.info](http://www.traveline.info)  
0871 200 22 33  
calls cost 12p per minute plus your phone company's access charge

#### NextBuses<sup>mobi</sup>

**Find the bus times for your stop.**  
Search for a bus stop by entering a postcode, street & town or a stop name & town.

#### PlusBus

[plusbus.info](http://plusbus.info)  
A discount price 'bus pass' that you buy with your train ticket. It gives you unlimited bus travel around your chosen town, on participating buses.

### National Rail Enquiries

#### Online

[nationalrail.co.uk](http://nationalrail.co.uk)

#### NRE App

Free National Rail Enquiries app for iOS and Android

#### Social Media

facebook.com/nationalrailenq  
@nationalrailenq

#### Alert Me

You can sign up to Alert Me messages on the National Rail Enquiries website where you can receive train and platform notifications directly to your smart phone.  
[nationalrail.co.uk/alertme](http://nationalrail.co.uk/alertme)

#### Contact Centre

03457 48 49 50  
Calls cost no more than calls to geographic numbers (01 or 02) and may be recorded.

#### PlusBike

[nationalrail.co.uk/plusbike](http://nationalrail.co.uk/plusbike)  
For more information.



**National Rail**  
Britain's train companies working together

