



# East Grinstead Station

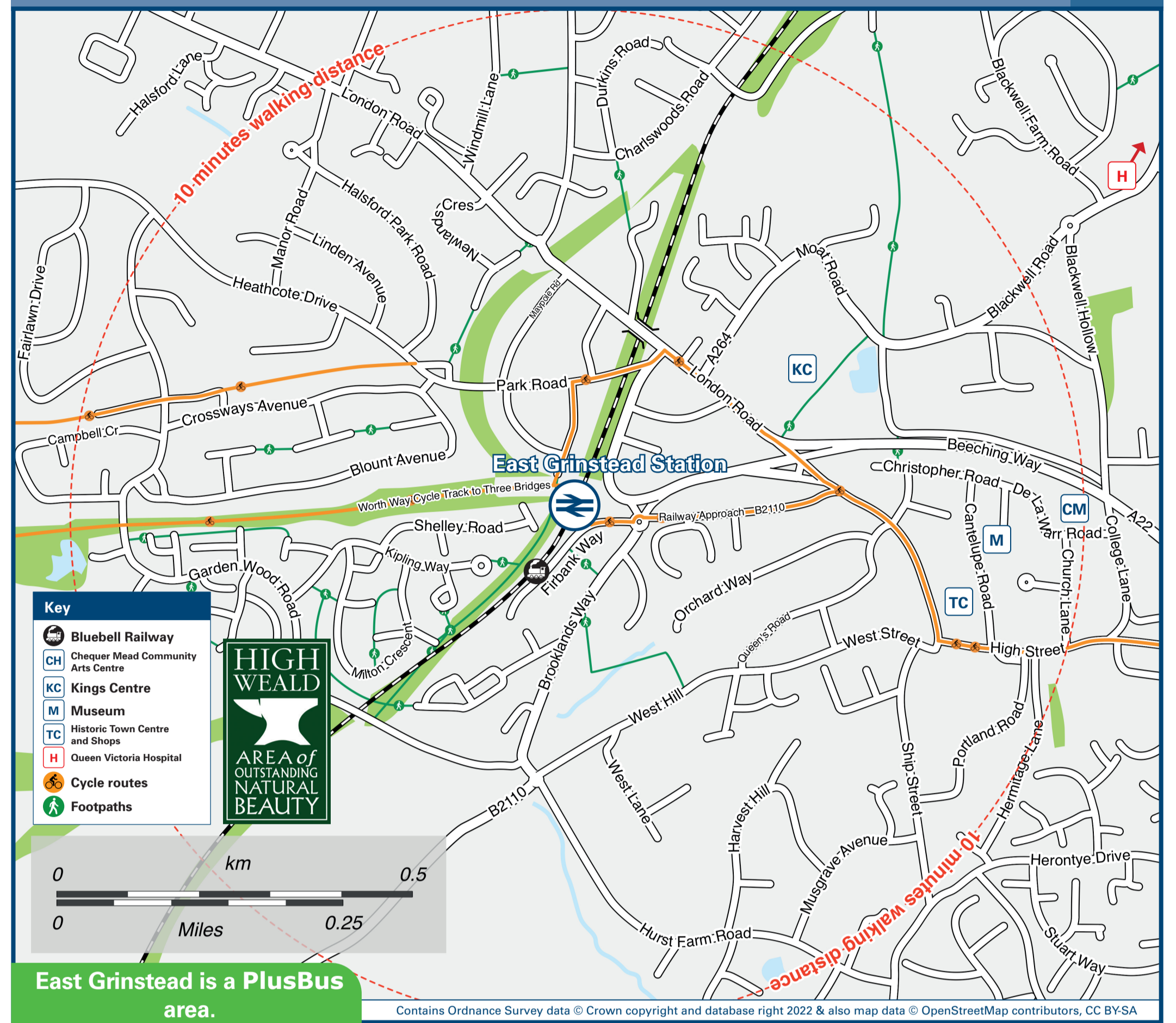
# Onward Travel Information

## Buses and Taxis



Rail Replacement buses depart from the station forecourt.

## Local area map



East Grinstead is a PlusBus area.



PlusBus is a discount price 'bus pass' that you buy with your train ticket. It gives you unlimited bus travel around your chosen town, on participating buses. Visit [www.plusbus.info](http://www.plusbus.info)

## Main destinations by bus

(Data correct at July 2023)



DESTINATION	BUS ROUTES	BUS STOP
Ashurst Wood	261#, 270, 291	A
Blindley Heath	409	A
Brighton (City Centre) ⇌	270	A
Burgess Hill ⇌	270	A
Caterham and Caterham-on-the-Hill ⇌	400, 409	A
Chelwood Common	270	A
Chelwood Gate	270	A
Coleman's Hatch	291	A
Copthorne Hotel	400	A
Copthorne Village	281	B
Copthorne West	291	A
Copthorne West	281	B
Crawley ⇌	84, 281	B
Crawley	291, 400	A
Crawley Down	281	B
Danehill	291	A
Danehill	270	A
Dormansland	236#, 281	A
East Grinstead Town area -		
- Baldwins Hill	236#, 409	A
- Hurst Farm Road (Dunnings Road)	84	B
- Garden Wood Road	281	B
- Garden Wood Road	84	M
- Herontye Drive	261#, 270, 281, 291	A
- High Street (War Memorial)	261#, 270, 281, 291	A
- High Street (War Memorial)	84	M
- High Street (War Memorial)	400	T
- Imberhorne Lower and Upper Schools	281	B
- Lewes Road	261#, 270, 291	A
- Lingfield Road	236#, 409	A
- London Road	270, 281, 291, 400, 485#	A
- London Road	84	M
- London Road	281	A
- Queen Victoria Hospital	281	A
- Queen Victoria Hospital	400	T

DESTINATION	BUS ROUTES	BUS STOP
- Sackville College and School	84	M
- Sackville College and School	261#, 270, 281, 291	A
- Sackville College and School	291	A
- Stone Quarry Estate	281	A
- Stone Quarry Estate	400	T
- Worsted Farm Estate	281	A
East Surrey Hospital	400	A
Edenbridge	236#	A
Edenbridge	281	B
Felbridge	291, 400, 485#	A
Felcourt	236#, 409	A
Forest Row	261#, 270, 291	A
Gatwick Airport (South Terminal) ⇌	400	A
Godstone ⇌	400, 409	A
Groombridge	291	A
Groombridge (for Spa Valley Railway)	291	A
Hassocks ⇌	270	A
Hartfield (for Pooh Corner)	291	A
Haywards Heath ⇌	270	A
Heathly Wood	281	B
Horsted Keynes (Village Centre)	270	A
Horsted Keynes Station (for the Bluebell Railway)	270*	A
Langton Green	291	A
Lindfield	270	A
Lingfield (Railway Station)	236#, 281	A
Lingfield (Village Centre, War Memorial)	236#, 281, 409	A
Lingfield Park Racecourse	236#, 281	A
Maresfield	261#	A
Newchapel (London Temple)	485#	A
Nutley	261#	A
Oxted	236#	A
Princess Royal Hospital (Haywards Heath)	270	A
Saint Hill Green	84	B
Sharpthorne	84	B
South Godstone (Railway Station) ⇌	409	A

DESTINATION	BUS ROUTES	BUS STOP
South Godstone (Village Centre)	409	A
Standen House & Garden (National Trust)	84	B
Three Bridges Station ⇌	84, 281	B
Three Bridges Station ⇌	291, 400	A
Tulleys Farm (for World of Water)	84	B
Tunbridge Wells (Railway Station & Town Centre) ⇌	291	A
Turners Hill Village and Turners Hill Park	84	B
Uckfield ⇌	261#	A
Westerham	236#	A
West Hoathly	84	B
Withyham	291	A
Wych Cross	261#, 270	A

### Notes

- PlusBus destination, please see below for details.
- Bus routes 84, 281 and 409 operate Mondays to Saturdays.
- Bus routes 270, 291 and 400 operate daily.
- For bus times please see bus stop timetables or contact Traveline on 0871 200 22 33.
- \* Bus route 270 serves Horsted Keynes Station on Saturdays, Sundays and Bank Holidays only.
- + Entrance to the Bluebell Railway Station platform is on Firbank Way (see Buses and Taxis map).
- # Bus routes 236, 261 and 485 operate a limited service on Mondays to Fridays only.
- AONB High Weald (AONB) [www.highweald.org](http://www.highweald.org)
- Ⓜ Alight in Groombridge for the Spa Valley Railway. [www.spavalleyrailway.co.uk](http://www.spavalleyrailway.co.uk), or call 01892 537 715 for general enquiries.
- 🚆 The Bluebell Railway runs from East Grinstead to Kingscote, Horsted Keynes and Sheffield Park stations call 01825 720 800 for general enquiries.
- 🚶 It's a 10 minutes walk from this station to East Grinstead High Street and War Memorial.
- ⇌ Change here for connecting National Rail services.
- Ⓜ Alternatively change trains at Hurst Green for Edenbridge Town station.
- 🚆 Direct trains operate to this destination from this Station

## Taxis

East Grinstead station is served by a taxi rank or cab office. Check availability before travelling, and pre-book if necessary. Please consider using the following local operators: (Inclusion of this number doesn't represent any endorsement of the taxi firm)

**AnB Cars**  
01342 317 887

**Meridian Carz**  
01342 326 595

**Western Cars**  
01342 300 000

**Alpha 18 Cars**  
07547 277 299

## Further information about all onward travel

<b>Local Cycle Info</b> <a href="http://eastgrinstead.gov.uk">eastgrinstead.gov.uk</a> For more information about cycle routes.	<b>National Cycle Info</b> <a href="http://sustrans.org.uk">sustrans.org.uk</a> Sustrans is the UK's leading sustainable transport charity.	<b>Bus Times</b> See timetable displays at bus stops.  <a href="http://www.traveline.info">www.traveline.info</a> 0871 200 22 33 call cost 12p per minute plus your phone company's access charge	<b>NextBuses</b> Find the bus times for your stop. Search for a bus stop by entering a postcode, street & town or a stop name & town.	<b>PlusBus</b> <a href="http://plusbus.info">plusbus.info</a> A discount price 'bus pass' that you buy with your train ticket. It gives you unlimited bus travel around your chosen town, on participating buses.
---	---	--	---	---

## National Rail Enquiries

<b>Online</b> <a href="http://nationalrail.co.uk">nationalrail.co.uk</a>	<b>NRE App</b> Free National Rail Enquiries app for iOS and Android	<b>Social Media</b> facebook.com/nationalrailenq @nationalrailenq	<b>Alert Me</b> You can sign up to Alert Me messages on the National Rail Enquiries website where you can receive train and platform notifications directly to your smart phone. <a href="http://nationalrail.co.uk/alertme">nationalrail.co.uk/alertme</a>	<b>Contact Centre</b> 03457 48 49 50 Calls cost no more than calls to geographic numbers (01 or 02) and may be recorded.	<b>PlusBike</b> <a href="http://nationalrail.co.uk/plusbike">nationalrail.co.uk/plusbike</a> For more information.
---	--	---	---	--	--



**National Rail**  
Britain's train companies working together



This poster shows details of popular destinations and main, frequent bus routes. Additional services may run, so please check with Traveline or see posters at local bus stops. Whilst considerable care has been taken to ensure the information contained on this poster is correct and accurate, National Rail cannot accept responsibility for any loss or inconvenience caused by any errors or omissions, or for loss, damage, injury or inconvenience relating to the cancellation, alteration, delay or diversion of a service. For any feedback, please e-mail [comments@onwardtravelposters.com](mailto:comments@onwardtravelposters.com)

Scan this code with your mobile for full station information.