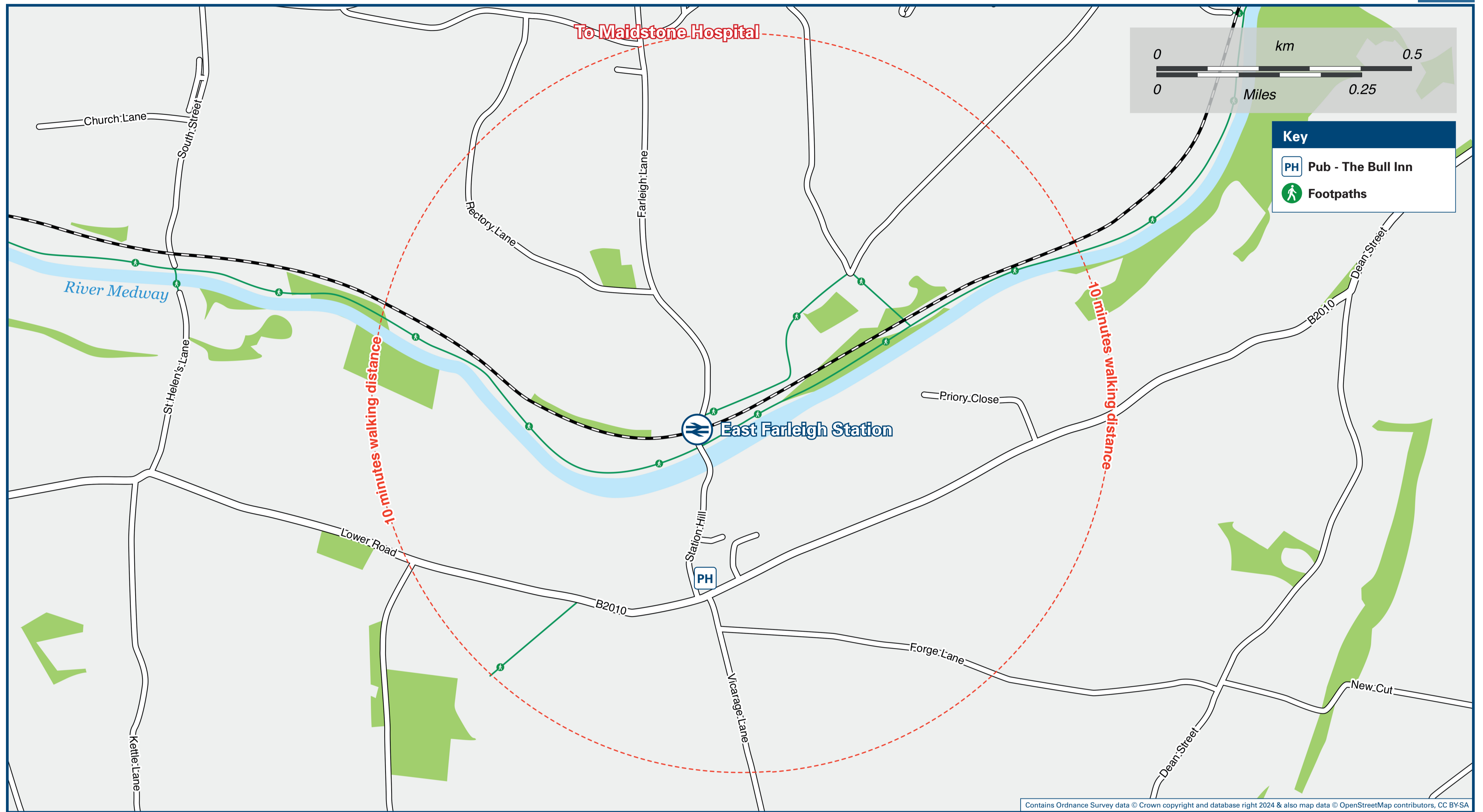




East Farleigh Station

Onward Travel Information

Local area map



Buses

Key

- A Bus Stop
- Rail replacement Bus Stop
- Station Entrance/Exit

Notes

Rail replacement buses depart from the Station car park entrance.

Main destinations by bus

(Data correct at July 2024)

DESTINATION	BUS ROUTES	BUS STOP
Benover	23A	B
Claygate	23	B
Collier Street	23	B
Goudhurst	23	B
Laddingford	23, 23A	B
Maidstone (Town Centre)	23, 23A	A
Marden (Railway Station)	23	B
Marden Beech	23	B
Tovil	23, 23A	A
West Farleigh	23, 23A	B
Winchet Hill	23	B
Yalding (War Memorial)	23, 23A	B

Notes

Routes 23 and 23A operate Mondays to Saturdays only. No service on Sundays or Bank Holidays.
For bus times and further information contact Traveline on 0871 200 22 33 or Nu-Venture call 01622 882 288 (between 10:00 and 14:00 Mondays to Fridays) or see www.nu-venture.online/contact
Direct trains operate to this destination from this Station.

Taxis

East Farleigh Station has no taxi rank or cab office. Local taxis are available as listed below: (Inclusion of this number doesn't represent any endorsement of the taxi firm)

Apollo Taxis
01622 882 020

Sapphire Cars
01622 663 000

Express Taxis
01622 222 222

Further information about all onward travel

Local Cycle Info maidstone.gov.uk <small>For more information about cycle routes.</small>	National Cycle Info sustrans.org.uk <small>Sustrans is the UK's leading sustainable transport charity.</small>	Bus Times <small>See timetable displays at bus stops.</small> www.traveline.info 0871 200 22 33 <small>calls cost 12p per minute plus your phone company's access charge</small>	NextBuses Find the bus times for your stop. <small>Search for a bus stop by entering a postcode, street & town or a stop name & town.</small>	PlusBus plusbus.info <small>A discount price 'bus pass' that you buy with your train ticket. It gives you unlimited bus travel around your chosen town, on participating buses.</small>
--	--	--	---	--

National Rail Enquiries

Online nationalrail.co.uk	NRE App Free National Rail Enquiries app for iOS and Android	Social Media facebook.com/nationalrailenq @nationalrailenq	Alert Me <small>You can sign up to Alert Me messages on the National Rail Enquiries website where you can receive train and platform notifications directly to your smart phone.</small> nationalrail.co.uk/alertme	Contact Centre 03457 48 49 50 <small>Calls cost no more than calls to geographic numbers (01 or 02) and may be recorded.</small>	PlusBike nationalrail.co.uk/plusbike <small>For more information.</small>
---	---	--	--	--	---



National Rail
Britain's train companies working together



This poster shows details of popular destinations and main, frequent bus routes. Additional services may run, so please check with Traveline or see posters at local bus stops. Whilst considerable care has been taken to ensure the information contained on this poster is correct and accurate, National Rail cannot accept responsibility for any loss or inconvenience caused by any errors or omissions, or for loss, damage, injury or inconvenience relating to the cancellation, alteration, delay or diversion of a service. For any feedback, please e-mail comments@onwardtravelposters.com

Scan this code with your mobile for full station information.