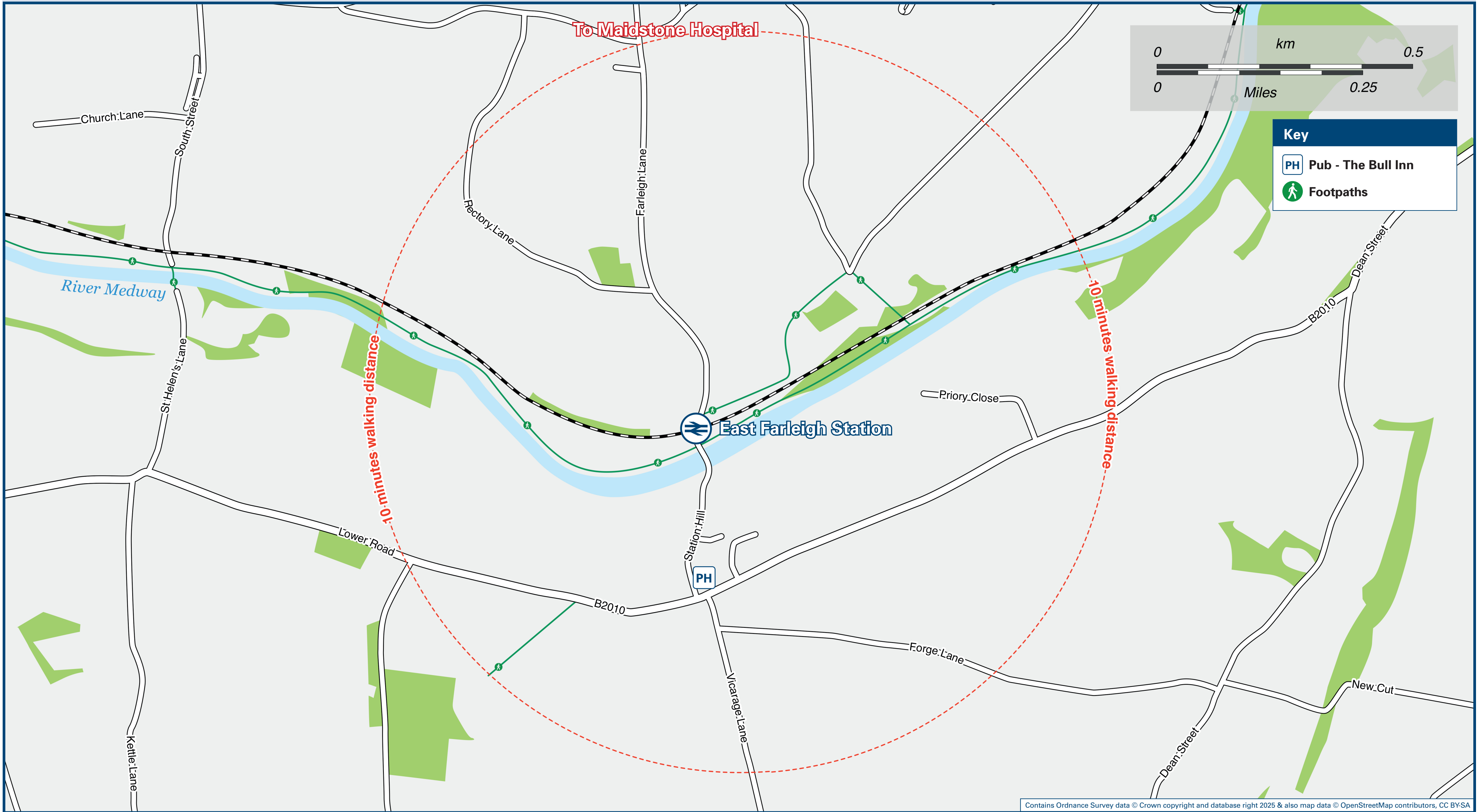




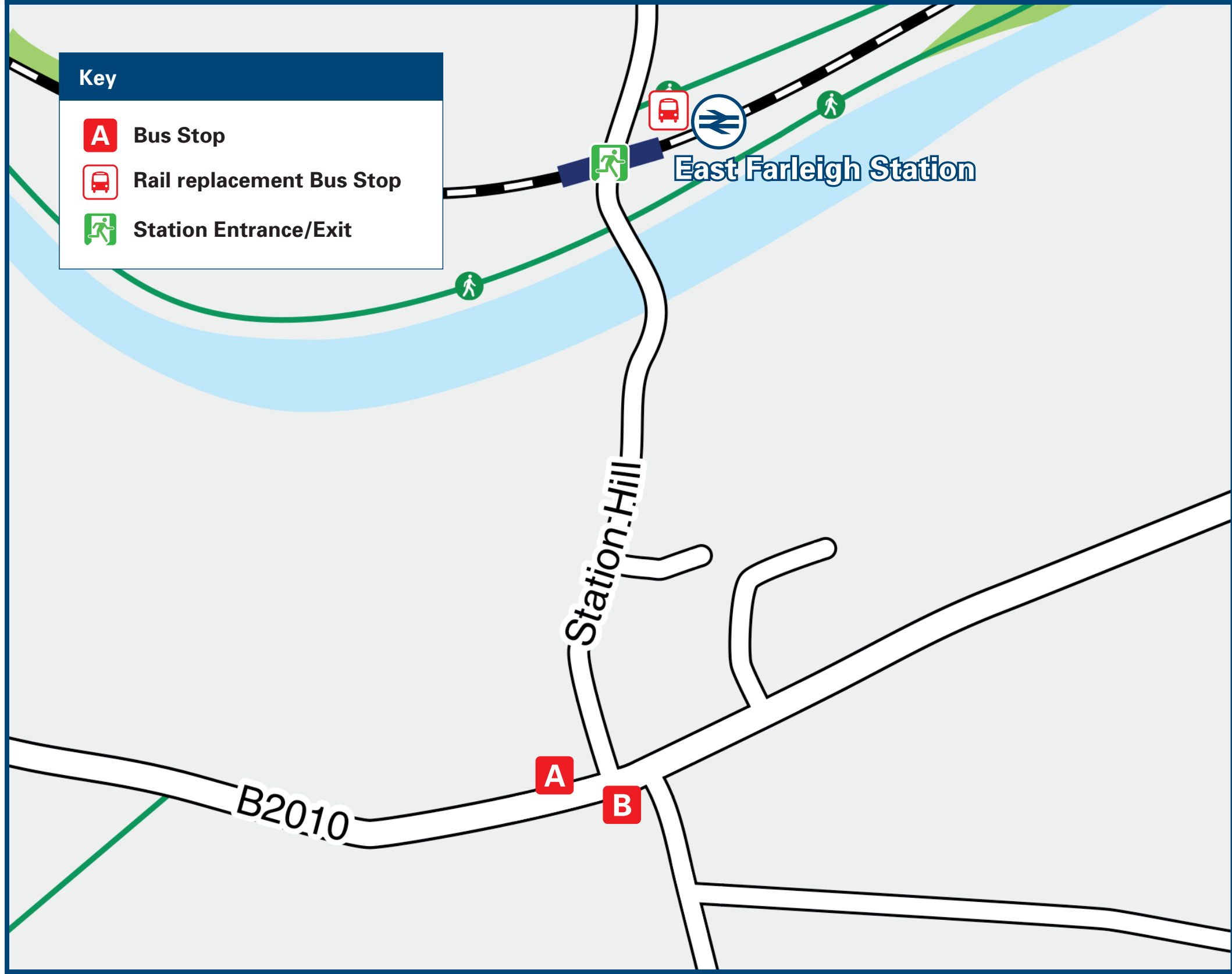
# East Farleigh Station

## Onward Travel Information

### Local area map



### Buses



Rail replacement buses depart from the Station car park entrance.

### Main destinations by bus

(Data correct at August 2025)

DESTINATION	BUS ROUTES	BUS STOP
Benover	23A#, 25#	B
Claygate	23#	B
Collier Street	23#	B
Goudhurst	23#	B
Laddingford	23#, 23A#, 25#	B
Maidstone (Town Centre)	23#, 23A#, 25#	A
Marden (Railway Station)	23#	B
Marden Beech	23#	B
Tovil	23#, 23A#, 25#	A
West Farleigh	23#, 23A#	B
Winchet Hill	23#	B
Yalding (War Memorial)	23#, 23A#, 25#	B

#### Notes

For bus times and days of operation please contact Traveline on [www.traveline.info](http://www.traveline.info) or call: 0871 200 22 33

➡ Direct trains operate to this destination from this Station.

# Bus routes 23, 23A & 25 operate limited daytime Mondays to Saturdays services, only. No evenings services, or services on Sundays or Bank Holidays.

### Taxis

East Farleigh Station has no taxi rank or cab office. Local taxis are available as listed below: (Inclusion of this number doesn't represent any endorsement of the taxi firm)

**Apollo Taxis**  
01622 882 020

**Sapphire Cars**  
01622 663 000

**Express Taxis**  
01622 222 222

### Further information about all onward travel

#### Local Cycle Info

[maidstone.gov.uk](http://maidstone.gov.uk)  
For more information about cycle routes.

#### National Cycle Info

[sustrans.org.uk](http://sustrans.org.uk)  
Sustrans is the UK's leading sustainable transport charity.

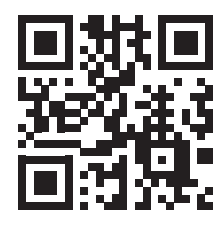
#### Bus Times

See timetable displays at bus stops.

[www.traveline.info](http://www.traveline.info)  
0871 200 22 33  
calls cost 15p per minute plus your phone company's access charge

#### PlusBus

[plusbus.info](http://plusbus.info)  
PlusBus is a discount price 'bus pass' that you buy with your train ticket. It gives you unlimited bus travel around your chosen town, on participating buses. Visit [www.plusbus.info](http://www.plusbus.info)



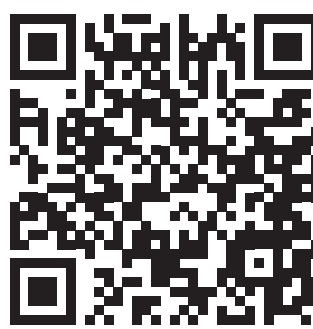
### National Rail Enquiries

<b>Online</b> <a href="http://nationalrail.co.uk">nationalrail.co.uk</a>	<b>NRE App</b> Free National Rail Enquiries app for iOS and Android	<b>Social Media</b> facebook.com/nationalrailenq @nationalrailenq	<b>Alert Me</b> You can sign up to Alert Me messages on the National Rail Enquiries website where you can receive train and platform notifications directly to your smart phone. <a href="http://nationalrail.co.uk/alertme">nationalrail.co.uk/alertme</a>	<b>Contact Centre</b> 03457 48 49 50 Calls cost no more than calls to geographic numbers (01 or 02) and may be recorded.	<b>PlusBike</b> <a href="http://nationalrail.co.uk/plusbike">nationalrail.co.uk/plusbike</a> For more information.
---	--	---	---	--	--

southeastern



**National Rail**  
Britain's train companies working together



This poster shows details of popular destinations and main, frequent bus routes. Additional services may run, so please check with Traveline or see posters at local bus stops. Whilst considerable care has been taken to ensure the information contained on this poster is correct and accurate, National Rail cannot accept responsibility for any loss or inconvenience caused by any errors or omissions, or for loss, damage, injury or inconvenience relating to the cancellation, alteration, delay or diversion of a service. For any feedback, please e-mail [comments@onwardtravelposters.com](mailto:comments@onwardtravelposters.com)

Scan this code with your mobile for full station information.