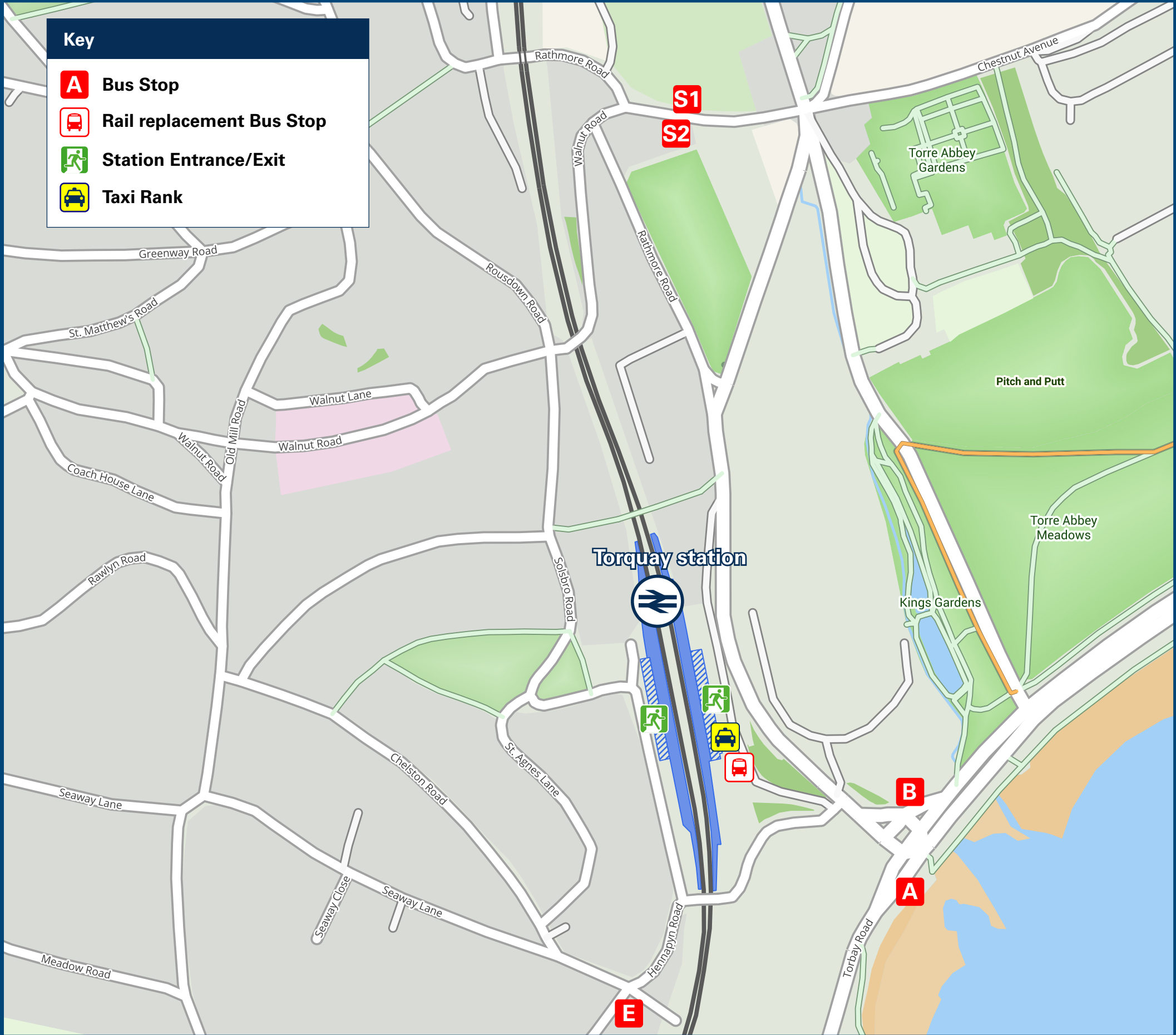




Torquay Station

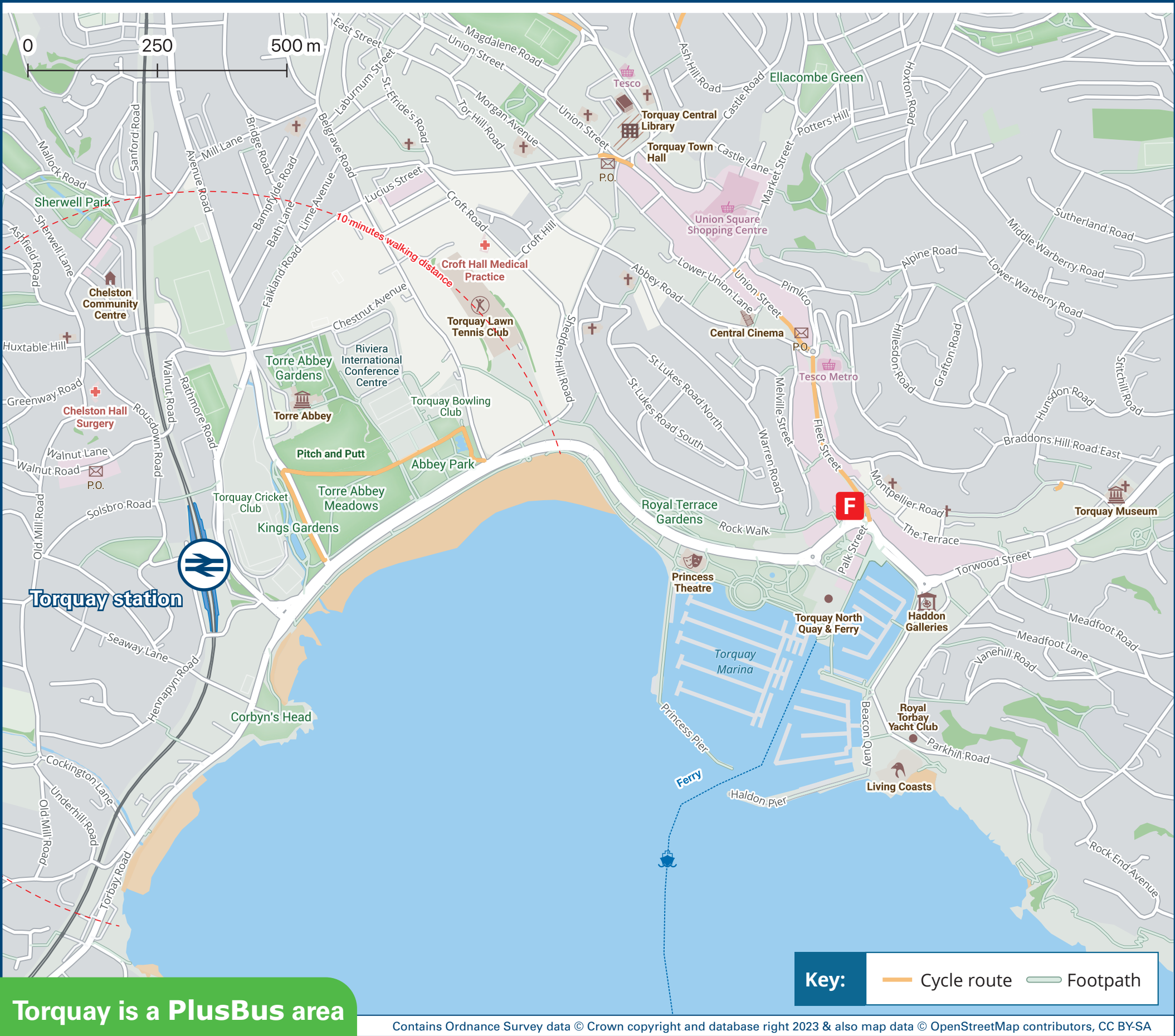
Onward Travel Information

Buses and Taxis



Rail replacement buses/coaches will depart from the front of the station

Local area map



Torquay is a PlusBus area



PlusBus is a discount price 'bus pass' that you buy with your train ticket. It gives you unlimited bus travel around your chosen town, on participating buses. Visit www.plusbus.info

Main destinations by bus

(Data correct at November 2023)



DESTINATION	BUS ROUTES	BUS STOP
● Babbacombe	122~	B
	35A	S 1
● Barton	35C	S 2
	31	F
● Brixham	12	A
Brixham Harbour	Ferry (from Harbour)	
● Chelston *	35C, 62	S 2
Cockington *	62	E
● Edginswell (Scotts Bridge)	12	B
	35C	S 2
● Ellacombe	35A	S 1
● Hele Cross	31	F
● Kingkerswell	12	B
● Livermead * (for Torquay Sea Front)	12, 22, 122~	A
● Maidencombe	22#	B

DESTINATION	BUS ROUTES	BUS STOP
● Newton Abbot	12	B
● Paignton Centre	12, 22, 122~	A
● Paignton Zoo	22	A
Paignton Harbour	Ferry (from Harbour)	
● Preston (Torquay Road)	12, 22, 122~	A
	35C	S 2
● Shiphay	12	B
South Devon College (Paignton)	22	A
● St Marychurch (for Model Village & Bygones)	22, 122~	B
	35A	S 1
● Torbay Hospital	35C	S 2
● Torbay Hospital (Lowes Bridge)	12	B
● Torquay Town Centre & Harbour *	12, 22, 122~	B
	35A, 62	S 1
● Torre (Shops)	12	B

DESTINATION	BUS ROUTES	BUS STOP
● Watcombe	31	F
	35A	S 1
● Wellswood	22, 122~	B
● The Willows Retail Park (Riviera Way)	35C	S 2

Notes

- **PlusBus** destination, please see below for details. Bus routes 12, 22, 31, 35A and 35C operate daily. Bus route 62 operates a Mondays to Fridays service, only. For bus times and days of operation please see bus stop timetables or contact Traveline.
- Connections for other destinations in Torquay are available by bus stops next to Torquay Town Centre and at Torquay Harbour.
- PlusBus** tickets are valid only within the Newton Abbot/Paignton/Torquay/Brixham **PlusBus** zone on Stagecoach, Country Bus, Dartline buses and Dartmouth Steam Railway and Round Robin Tours.
- Direct trains operate to this destination from this Station.
- Change here for the Paignton & Dartmouth Steam Railway
- Ferry services operate from this location, daily. Please contact www.westernladyferry.com or telephone 01803 293 797 for more details.
- * These destinations are walkable (10/15 minutes) from Torquay Station
- # To this destination, bus route 22 operates a less frequent daily service.
- ~ Bus route 122 operates a daily service in the Summer, only.

Taxis

Torquay station is served by a taxi rank or a cab office. Check availability before travelling, and pre-book if necessary. Please consider using the following local operators: (Inclusion of this number doesn't represent any endorsement of the taxi firm)

Torbay Taxis
01803 211 611

Torbay Cabs Ltd
01803 322 222

Torbay Cab Company
01803 292 292

Further information about all onward travel

Local Cycle Info	National Cycle Info	Bus Times	NextBuses	PlusBus
torbay.gov.uk For more information about cycle routes.	sustrans.org.uk Sustrans is the UK's leading sustainable transport charity.	See timetable displays at bus stops. www.traveline.info 0871 200 22 33 calls cost 10p per minute plus your phone company's access charge	Find the bus times for your stop. Search for a bus stop by entering a postcode, street & town or a stop name & town.	plusbus.info A discount price 'bus pass' that you buy with your train ticket. It gives you unlimited bus travel around your chosen town, on participating buses.

National Rail Enquiries

Online	NRE App	Social Media	Alert Me	Contact Centre	PlusBike
nationalrail.co.uk	Free National Rail Enquiries app for iOS and Android	facebook.com/nationalrailenq @nationalrailenq	You can sign up to Alert Me messages on the National Rail Enquiries website where you can receive train and platform notifications directly to your smart phone. nationalrail.co.uk/alertme	03457 48 49 50 Calls cost no more than calls to geographic numbers (01 or 02) and may be recorded.	nationalrail.co.uk/plusbike For more information.



National Rail
Britain's train companies working together



This poster shows details of popular destinations and main, frequent bus routes. Additional services may run, so please check with Traveline or see posters at local bus stops. Whilst considerable care has been taken to ensure the information contained on this poster is correct and accurate, National Rail cannot accept responsibility for any loss or inconvenience caused by any errors or omissions, or for loss, damage, injury or inconvenience relating to the cancellation, alteration, delay or diversion of a service. For any feedback, please e-mail comments@onwardtravelposters.com

Scan this code with your mobile for full station information.