



# Torquay Station

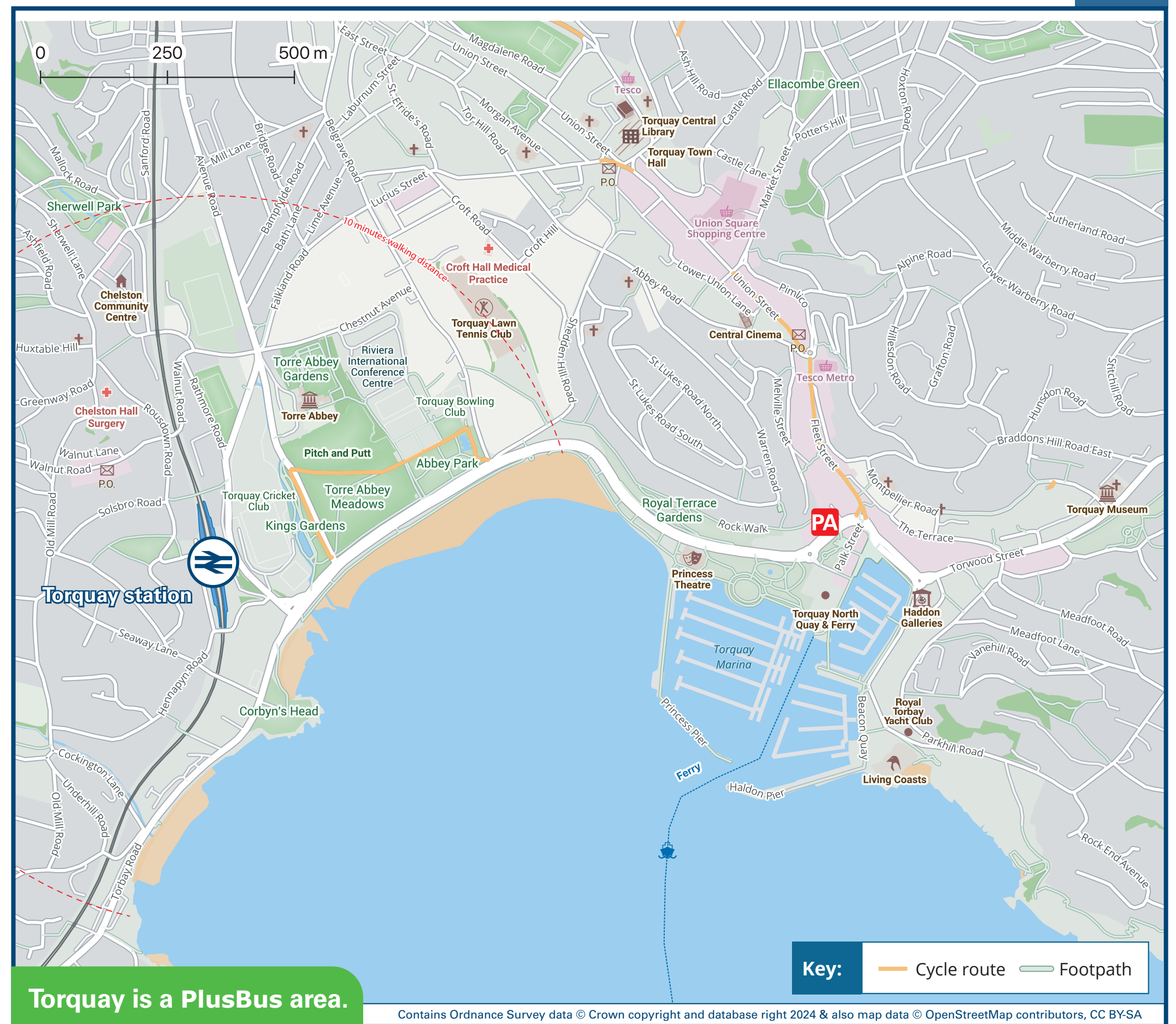
# Onward Travel Information

## Buses and Taxis



Rail replacement buses/coaches will depart from the car park at the front of the station.

## Local area map



Torquay is a PlusBus area.



PlusBus is a discount price 'bus pass' that you buy with your train ticket. It gives you unlimited bus travel around your chosen town, on participating buses. Visit [www.plusbus.info](http://www.plusbus.info)

## Main destinations by bus

(Data correct at January 2025)



DESTINATION	BUS ROUTES	BUS STOP
● Barton	35A	S 1
	35C	S 2
	31	P A
● Brixham	12	A
Brixham Harbour (Seasonal service)	Ferry (from Harbour)	
	10-15 minutes walk from the station	
● Chelston	35C, 62	S 2
Cockington	62	E
● Edginswell (Scotts Bridge)	12	B
● Ellacombe	35C	S 2
● Hele Cross	35A	S 1
● Kingkerswell	31	P A
	12	B
● Livermead (Sea Front)		
	15-20 minutes walk from the station	
	12, 22	A
● Maidencombe	22#	B
● Newton Abbot	12*	B

DESTINATION	BUS ROUTES	BUS STOP
● Paignton Centre	12, 22	A
● Paignton Zoo	22	A
Paignton Harbour (Seasonal service)	Ferry (from Harbour)	
● Paignton (Railway Station)	12*	B
● Preston (Torquay Road)	12, 22	A
● Shiphay	35C	S 2
	12	B
South Devon College (Paignton)	22	A
● St Marychurch (for Model Village & Bygones)	22	B
	35A	S 1
● Torbay Hospital	35C	S 2
● Torbay Hospital (Lowes Bridge)	12	B
	20-25 minutes walk from the station	
● Torquay Town Centre & Harbour	12, 22	B
	35A, 62	S 1
● Torre (Railway Station)	12*	B

DESTINATION	BUS ROUTES	BUS STOP
● Torre (Shops)	12	B
● Watcombe	31	P A
	35A	S 1
● Wellswood	22	B
● The Willows Retail Park (Riviera Way)	35C	S 2

**Notes**

Bus routes 12, 22, 31, 35A, 35C and 62 operate daily. For bus times and days of operation please see bus stop timetables or contact Traveline.

Connections for other destinations in Torquay are available by bus stops next to Torquay Town Centre and at Torquay Harbour.

Plusbus tickets are valid only within the Newton Abbot/Paignton/Torquay/Brixham Plusbus zone on Stagecoach, Country Bus, Dartline buses and Dartmouth Steam Railway and Round Robin Tours.

- Direct trains operate to this destination from this Station.
- Change here for the Paignton & Dartmouth Steam Railway
- Ferry services operate from this location, daily. Please contact [www.westernladyferry.com](http://www.westernladyferry.com) or telephone 01803 293 797 for more details.
- \* Bus route 12 serves as a rail replacement bus option for to these destinations.
- # To this destination, bus route 22 operates a less frequent daily service.
- PlusBus destination, please see below for details.

## Taxis

Torquay station is served by a taxi rank or a cab office. Check availability before travelling, and pre-book if necessary. Please consider using the following local operators: (Inclusion of this number doesn't represent any endorsement of the taxi firm)

**Torbay Taxis**  
01803 211 611

**Torbay Cab Co**  
01803 292 292

**Price First Taxis**  
01803 322 322

## Further information about all onward travel

<b>Local Cycle Info</b> <a href="http://torbay.gov.uk">torbay.gov.uk</a> For more information about cycle routes.	<b>National Cycle Info</b> <a href="http://sustrans.org.uk">sustrans.org.uk</a> Sustrans is the UK's leading sustainable transport charity.	<b>Bus Times</b> See timetable displays at bus stops.  <a href="http://www.traveline.info">www.traveline.info</a> 0871 200 22 33 calls cost 10p per minute plus your phone company's access charge	<b>NextBuses</b> .mobi  <b>Find the bus times for your stop.</b> Search for a bus stop by entering a postcode, street & town or a stop name & town.	<b>PlusBus</b>  <a href="http://plusbus.info">plusbus.info</a> A discount price 'bus pass' that you buy with your train ticket. It gives you unlimited bus travel around your chosen town, on participating buses.
---	---	---	--	---

## National Rail Enquiries

<b>Online</b> <a href="http://nationalrail.co.uk">nationalrail.co.uk</a>	<b>NRE App</b> Free National Rail Enquiries app for iOS and Android	<b>Social Media</b> facebook.com/nationalrailenq @nationalrailenq	<b>Alert Me</b> You can sign up to Alert Me messages on the National Rail Enquiries website where you can receive train and platform notifications directly to your smart phone. <a href="http://nationalrail.co.uk/alertme">nationalrail.co.uk/alertme</a>	<b>Contact Centre</b> 03457 48 49 50 Calls cost no more than calls to geographic numbers (01 or 02) and may be recorded.	<b>PlusBike</b>  <a href="http://nationalrail.co.uk/plusbike">nationalrail.co.uk/plusbike</a> For more information.
---	--	---	---	--	--



**National Rail**  
Britain's train companies working together



This poster shows details of popular destinations and main, frequent bus routes. Additional services may run, so please check with Traveline or see posters at local bus stops. Whilst considerable care has been taken to ensure the information contained on this poster is correct and accurate, National Rail cannot accept responsibility for any loss or inconvenience caused by any errors or omissions, or for loss, damage, injury or inconvenience relating to the cancellation, alteration, delay or diversion of a service. For any feedback, please e-mail [comments@onwardtravelposters.com](mailto:comments@onwardtravelposters.com)

Scan this code with your mobile for full station information.