



# Darlington Station

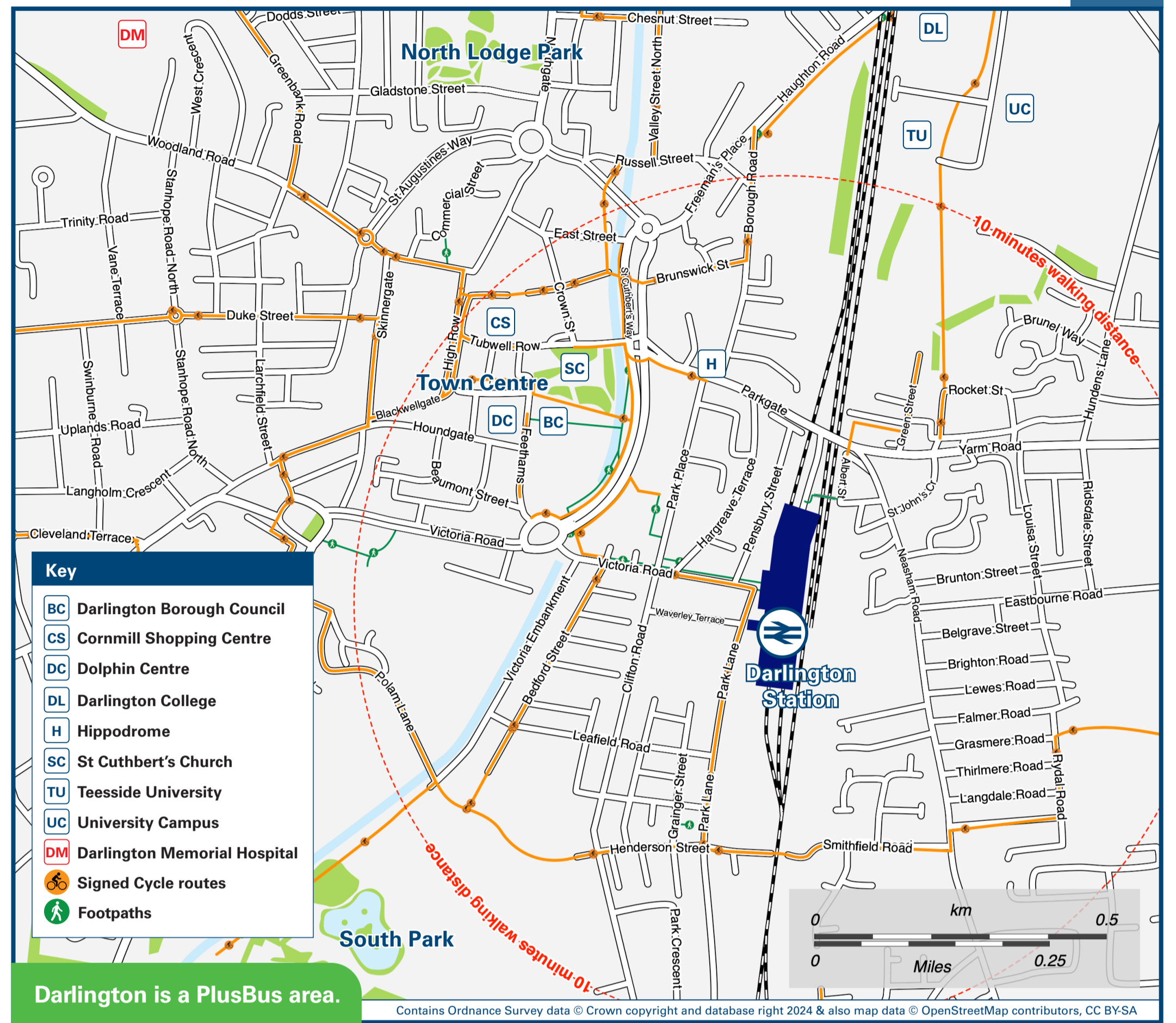
# Onward Travel Information

## Buses and Taxis



Rail replacement coaches depart from the station entrance on Park Lane, opposite Hogans Bar. Rail replacement taxis collect and drop off at the entrance off Yarm Road in the main taxi area.

## Local area map



PlusBus is a discount price 'bus pass' that you buy with your train ticket. It gives you unlimited bus travel around your chosen town, on participating buses. Visit [www.plusbus.info](http://www.plusbus.info)

## Main destinations by bus

(Data correct at July 2024)

DESTINATION	BUS ROUTES	BUS STOP
Aldbrough St John	29	M
Aycliffe Industrial Estate	5	H
Aycliffe Village	7, 8	H
Barnard Castle	X75, X76 84, 84A	M I
Barton	X26, X27	I
Bates Avenue	4	I
Bishop Auckland	5	H
Bransome	84, 84A	I
Brinkburn Road	2, 2A	S
Brompton (Northallerton)	4	I
Brompton (Northallerton)	72	M
Catterick Garrison	X26, X27	I
Catterick Village / Mame Barracks	34	M
Chilton	7, 8	H
Cockerton (Library)	2, 2A	S
Cockfield	84, 84A	I
Colburn	X26	I
Coniscliffe Road	X75, X76	M
Corporation Road	4	I
Cowton (North & East)	72	M
Crook	1	I
Darlington Arena	6A	X, X
Darlington College	9, 10	F
Darlington Head of Steam Museum	X67 18	I H
Darlington Memorial Hospital	5, 7, 8, 16 X66	H L
Darlington (Town Centre)	1A, 2A, 2A*, 17A, 19 2A, 2A*	J S
Darlington (Town Centre)	2, 2A, 6, 6B*, 13A, 13B, 18	S Z
Darlington (Town Centre)	13A, 13B X26, X27	Z Z
Durham	7	H
Eaglescliffe	6, 6B*	X
Eastbourne (Yarm Road)	2, 2A, 6, 6B*, 18	X
Faverdale	1, 19	H
Ferryhill	7, 8	H
Firthmoor	13A, 13B	X, X
Gainford	X75, X76	M
Gilling West	29	M
Great Burdon	X66	L
Harrowgate Farm	18	X

DESTINATION	BUS ROUTES	BUS STOP
Harrowgate Hill	5, 7, 8, 16 18	H X
Houghton	X66	L
Houghton Road	10	F, F+
Heighington	9, 10	F, F+
High Grange	1	I
Hollyhurst Road	19	J
Hopetown	19	J
Hummersknott	4	I
Hurworth	16 17	T I
Ingleby Barwick	6, 6B* 6A	S, M X, X
Ingleton	6	I
Lingfield (Amazon, Morton Park Way)	84, 84A	I
Lingfield (Symmetry Park, Morton Park Way)	2A	X
Lingfield (Symmetry Park, Tornado Way)	2A	X
Manfield	X67	L
Manfield	29	M
Middlesbrough	X66, X67	L
Middleton St George (for Dinsdale Station)	6, 6B*	X
Middleton One Row	6, 6B*	X
Middleton Tyas	34	M
Minors Crescent	4	I
Morton Park (Yarm Road)	6, 6B*	X
Mowden (Shops)	17	J
Newton Aycliffe	5, 7, 8 18	H X
North Road Railway Station (for Railway Museum)	5, 7, 8, 16 X66	H L
Northallerton	72	M
Piercebridge	X75, X76	M
Pierremont	19	J
Red Hall	2, 2A	X
Richmond	X26, X27 29, 34	I M
Rise Carr	29, 34	M
Salters Lane North	X66	L
Scorton	34	M
Scotch Corner	X26, X27	I
Shildon	1	J
Shildon	5	H
Skerne Park	3	S
Spennymoor	8	H

DESTINATION	BUS ROUTES	BUS STOP
Springfield	9	F, F+
Stockton	6, 6B* X66, X67	X L
Teesside Airport (Terminal Building)	6, 6B*	X
Tow Law	1	J
Trees Park Village	6, 6A	X
West Auckland Road	1, 9	J
West Park Hospital	16	I
Whinfield	10	F, F+
Willow Road	19	J
Woodham	7	H
Woodland Road	1, 2, 2A, 17, 19 2, 2A	J S
Yarm (Town Hall)	6	X
Yarm Road	2, 2A, 6, 6B*	X

### Notes

- PlusBus destination, please see below for details.
- Bus routes 1, 2, 2A, 3, 4, 5, 7, 9, 10, 13A, 13B, 19, X26, X66 and X75 run daily.
- Bus routes 6, 6A, 8, 16, 17, 18, 29, 34, 72, 84, 84A, X27, X67 and X76 run Mondays to Saturdays.
- Plusbus tickets are valid in the Darlington Plusbus zone on Arriva North East buses only. Plusbus tickets are not valid on routes 16, 29, 34, 72, 84 or 84A.
- Direct trains operate to this destination from this station.
- Alight at North Road Railway Station for the Hopetown Darlington (Railway Museum), call 01325 405 060 or email at [hopetown@darlington.gov.uk](mailto:hopetown@darlington.gov.uk) for more information.
- It's a 10 to 15 minutes walk from this station to Darlington town centre, see the Buses and Taxis map for walking routes.
- Alight this bus service at St Teresa's Hospice on Woodland Road for a short walk to Darlington Memorial Hospital via Hollyhurst Road.
- Alight bus 5, 7, 8, 16, 18 or X66 at Morrisons on North Road for North Road Railway Station and the Railway Museum.
- Evenings only from the Town Hall bus stop T, please check times.
- \* Bus route 6B operates Sundays and some Public Holidays only.

## Taxis

Darlington is a major station where taxis are usually available on a rank. Advance booking is not normally necessary, unless arriving early in the morning or late at night. Operators who may accept bookings include: (Inclusion of this number doesn't represent any endorsement of the taxi firm)

**Darlington Station Taxis**  
01325 468 888

**Taxicall Darlington**  
01325 939 936

**United Taxis**  
01325 282 855

## Further information about all onward travel

<b>Local Cycle Info</b> <a href="http://cyclestreets.net">cyclestreets.net</a> For local and national cycle information.	<b>National Cycle Info</b> <a href="http://sustrans.org.uk">sustrans.org.uk</a> Sustrans is the UK's leading sustainable transport charity.	<b>Bus Times</b> See timetable displays at bus stops.  <a href="http://www.traveline.info">www.traveline.info</a> 0871 200 22 33 call cost 12p per minute plus your phone company's access charge	<b>NextBuses</b> Find the bus times for your stop. Search for a bus stop by entering a postcode, street & town or a stop name & town.	<b>PlusBus</b> <a href="http://plusbus.info">plusbus.info</a> A discount price 'bus pass' that you buy with your train ticket. It gives you unlimited bus travel around your chosen town, on participating buses.
--	---	--	---	---

## National Rail Enquiries

<b>Online</b> <a href="http://nationalrail.co.uk">nationalrail.co.uk</a>	<b>NRE App</b> Free National Rail Enquiries app for iOS and Android	<b>Social Media</b> facebook.com/nationalrailenq @nationalrailenq	<b>Alert Me</b> You can sign up to Alert Me messages on the National Rail Enquiries website where you can receive train and platform notifications directly to your smart phone. <a href="http://nationalrail.co.uk/alertme">nationalrail.co.uk/alertme</a>	<b>Contact Centre</b> 03457 48 49 50 Calls cost no more than calls to geographic numbers (01 or 02) and may be recorded.	<b>PlusBike</b> <a href="http://nationalrail.co.uk/plusbike">nationalrail.co.uk/plusbike</a> For more information.
---	--	---	---	--	--



**National Rail**  
Britain's train companies working together



This poster shows details of popular destinations and main, frequent bus routes. Additional services may run, so please check with Traveline or see posters at local bus stops. Whilst considerable care has been taken to ensure the information contained on this poster is correct and accurate, National Rail cannot accept responsibility for any loss or inconvenience caused by any errors or omissions, or for loss, damage, injury or inconvenience relating to the cancellation, alteration, delay or diversion of a service. For any feedback, please e-mail [comments@onwardtravelposters.com](mailto:comments@onwardtravelposters.com)

Scan this code with your mobile for full station information.