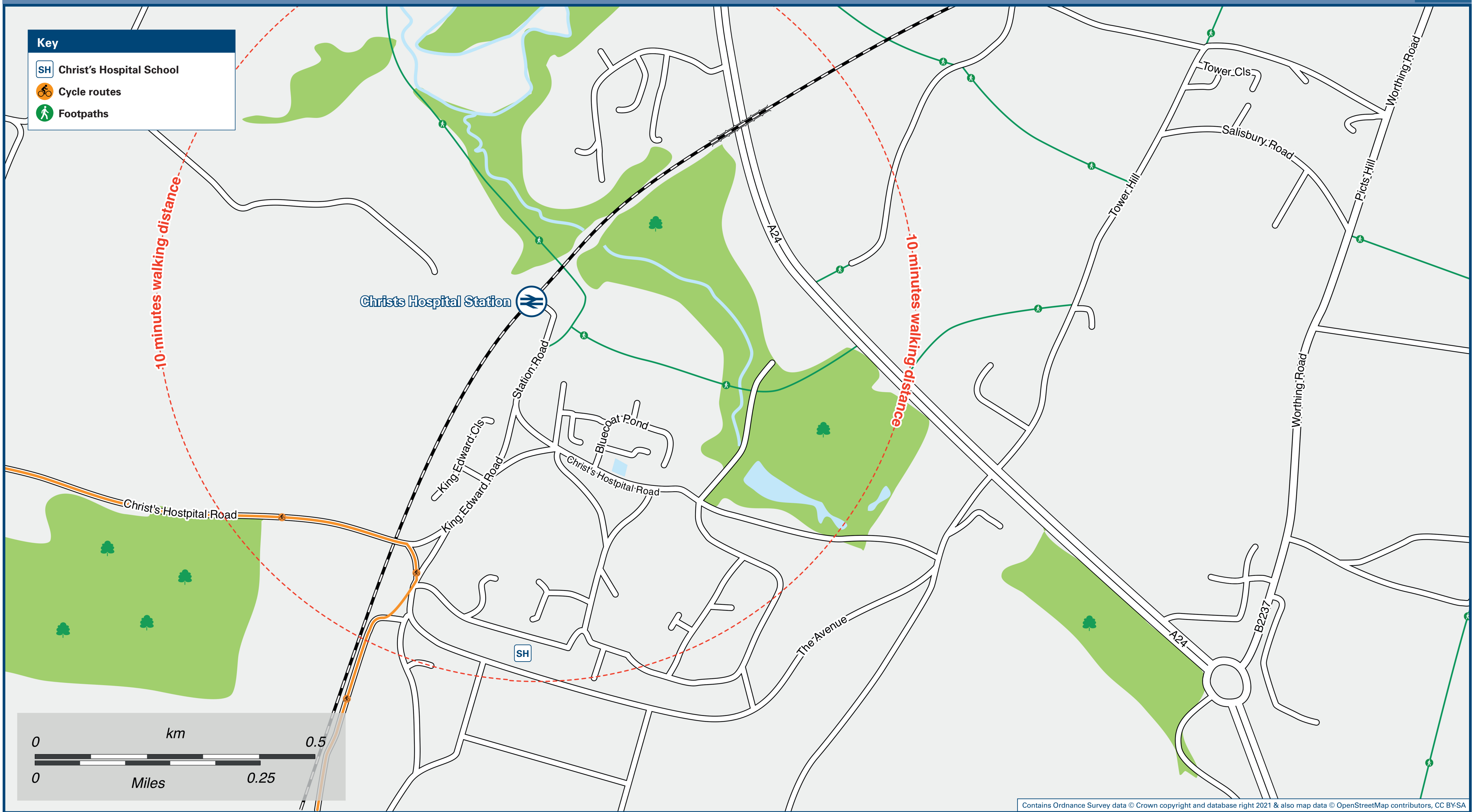




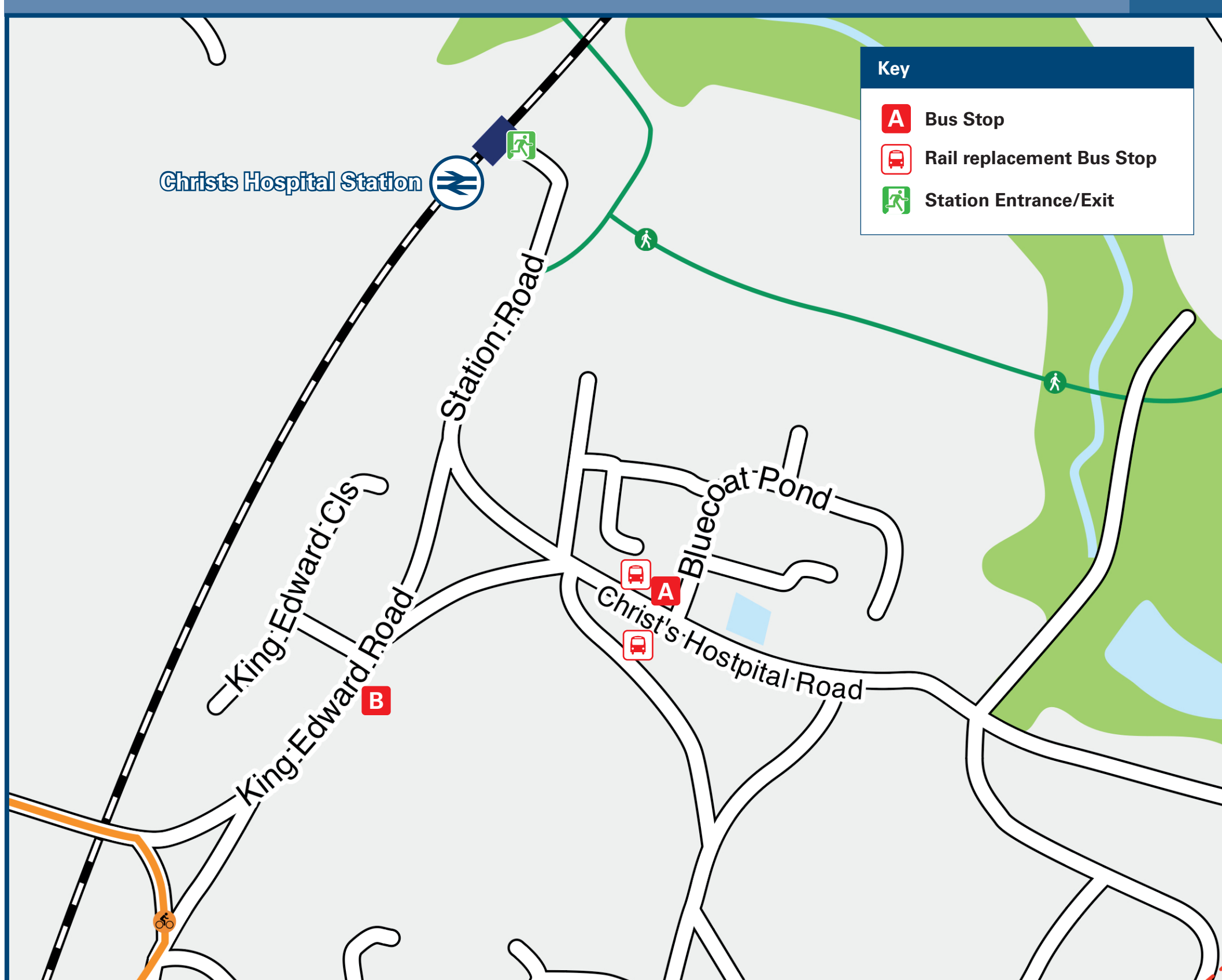
Christ's Hospital Station

Onward Travel Information

Local area map



Buses



Rail Replacement buses depart from stop A on Christ's Hospital Road.

Information

(Data correct at April 2023)

THERE ARE NO FREQUENT BUS SERVICES SERVING CHRISTS HOSPITAL RAILWAY STATION

Bus route 64 operates Mondays and Thursdays from stop **A** at 11:30 to Horsham and from stop **B** at 13:37 to Coolham and Loxwood.

Bus route 74 operates Tuesdays from stop **A** at 10:08, 12:45 & 14:13 to Horsham and from stop **B** at 10:32, 13:07 & 14:37 to Storrington.

Bus route 74A operates Mondays to Fridays from stop **A** at 07:08 to Horsham and from stop **B** at 16:51 to Storrington.

Bus route 74A operates Thursdays from stop **A** at 12:45 & 14:13 to Horsham and from stop **B** at 10:32 and 14:37 to Storrington.

Bus routes 64, 74 & 74A are operated by Compass Travel, www.compass-travel.co.uk or call 01903 690 025 for more information.

Christ's Hospital Station has no taxi rank or cab office. Advance booking is essential, please consider using the following local operators: (Inclusion of this number doesn't represent any endorsement of the taxi firm)

AAA2B
01403 242 424

MG Cars
07448 953 181

Carfax Cars
07770 667 517

Further information about all onward travel

Local Cycle Info For more information about cycle routes.	National Cycle Info sustrans.org.uk Sustrans is the UK's leading sustainable transport charity.	Bus Times See timetable displays at bus stops. www.traveline.info 0871 200 22 33 <small>calls cost 13p per minute plus your phone company's access charge</small>	NextBuses Find the bus times for your stop. Search for a bus stop by entering a postcode, street & town or a stop name & town.	PlusBus plusbus.info A discount priced 'bus pass' that you buy with your train ticket. It gives you unlimited bus travel around your chosen town, on participating buses.
---	---	--	--	---

National Rail Enquiries

Online nationalrail.co.uk	NRE App Free National Rail Enquiries app for iOS and Android	Social Media facebook.com/nationalrailenq @nationalrailenq	Alert Me You can sign up to Alert Me messages on the National Rail Enquiries website where you can receive train and platform notifications directly to your smart phone. nationalrail.co.uk/alertme	Contact Centre 03457 48 49 50 Calls cost no more than calls to geographic numbers (01 or 02) and may be recorded.	PlusBike nationalrail.co.uk/plusbike For more information.
---	--	---	---	--	--



Whilst considerable care has been taken to ensure the information contained on this poster is correct and accurate, National Rail cannot accept responsibility for any loss or inconvenience caused by any errors or omissions, or for loss, damage, injury or inconvenience caused. For any feedback, please e-mail comments@onwardtravelposters.com

Scan this code with your mobile for full station information.