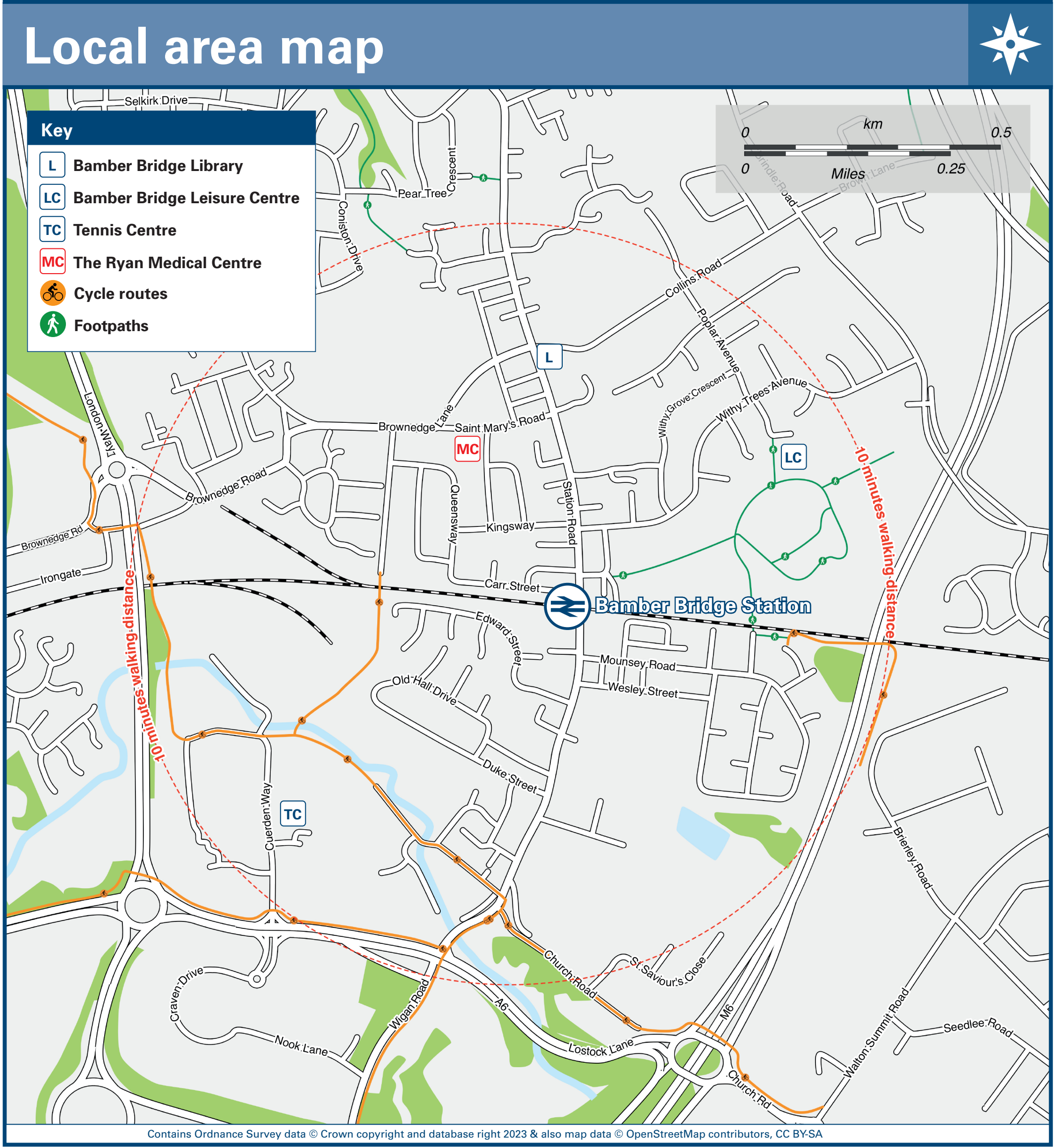
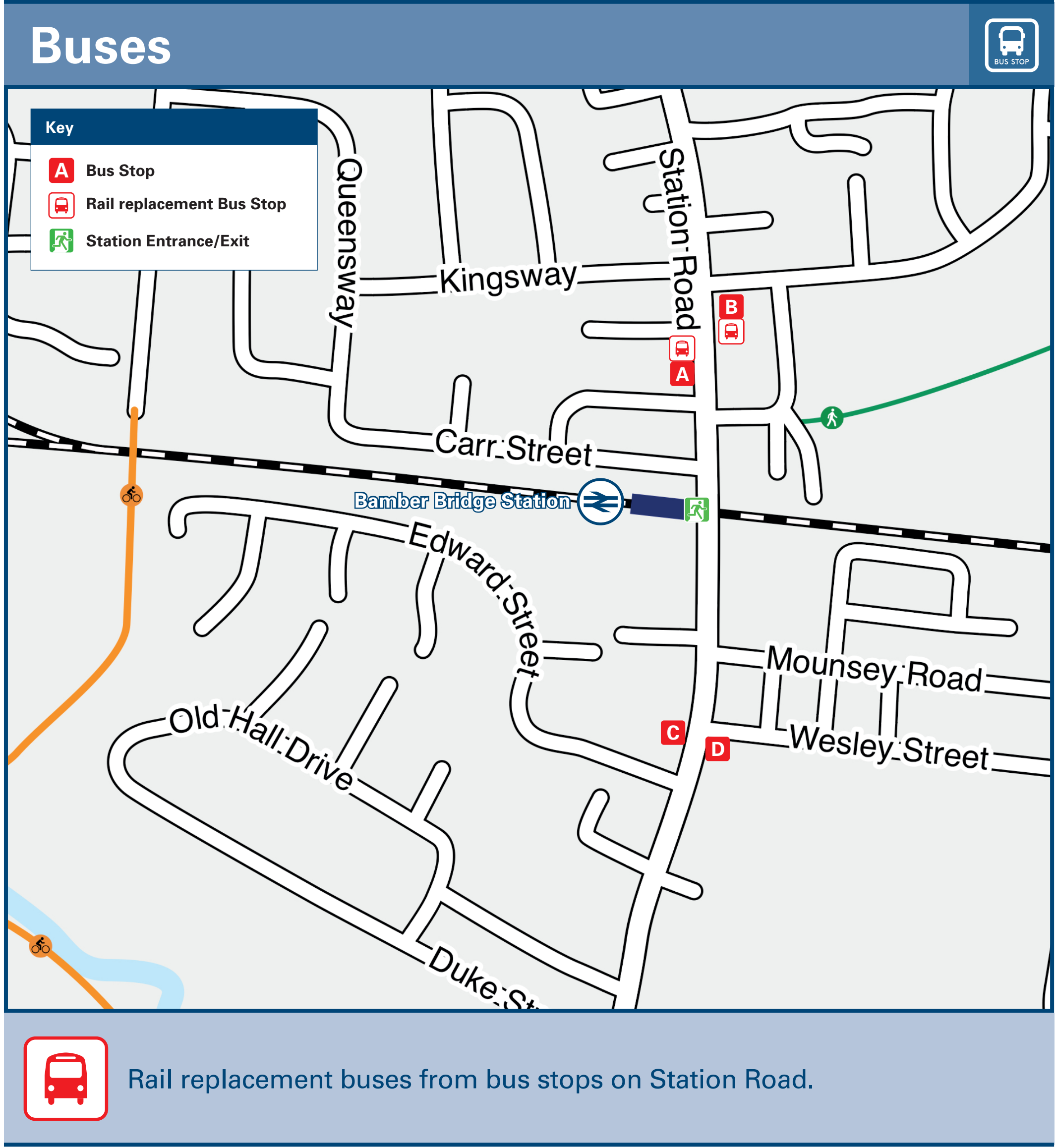




# Bamber Bridge Station

## Onward Travel Information



Main destinations by bus			(Data correct at September 2023)		
DESTINATION	BUS ROUTES	BUS STOP	DESTINATION	BUS ROUTES	BUS STOP
Adlington	125	B, D	Frenchwood	112, 125	A, C
Bolton	125	B, D	Fulwood	125	A, C
Chorley Hospital	125	B, D	Hoghton	125	B, D
Chorley	125	B, D	Horwich	125	B, D
Clayton Brook	112, 125	B, D	Johnson Fold	125	B, D
Clayton Green	112	B, D	Leyland	112	B, D
DESTINATION	BUS ROUTES	BUS STOP	DESTINATION	BUS ROUTES	BUS STOP
Preston	112, 125	A, C	Walton-le-Dale	112, 125	A, C
Walton Summit	112, 125	B, D	Whittle-le-Woods	125	B, D
Notes					
Bus route 112 operates Mondays to Saturdays only. Bus route 125 operates daily.					
Direct trains operate to this destination from this station.					

Taxis	Bamber Bridge Station has no taxi rank or cab office. Advance booking is essential, please consider using the following local operators: (Inclusion of this number doesn't represent any endorsement of the taxi firm)	Millers City Cars 01772 884 000		Silver Cabs 01772 433 733	Village Cars/Taxis 01772 620 808

Further information about all onward travel					
Local Cycle Info <a href="http://southribble.gov.uk">southribble.gov.uk</a> For more information about cycle routes.	National Cycle Info <a href="http://sustrans.org.uk">sustrans.org.uk</a> Sustrans is the UK's leading sustainable transport charity.	Bus Times See timetable displays at bus stops. <a href="http://www.traveline.info">www.traveline.info</a> 0871 200 22 33 call cost 15p per minute plus your phone company's access charge	NextBuses Find the bus times for your stop. Search for a bus stop by entering a postcode, street & town or a stop name & town. Calls cost no more than calls to geographic numbers (01 or 02) and may be recorded.	PlusBus <a href="http://plusbus.info">plusbus.info</a> A discount price 'bus pass' that you buy with your train ticket. It gives you unlimited bus travel around your chosen town, on participating buses.	
National Rail Enquiries					
Online <a href="http://nationalrail.co.uk">nationalrail.co.uk</a>	NRE App Free National Rail Enquiries app for iOS and Android	Social Media <a href="https://www.facebook.com/nationalrailenq">facebook.com/nationalrailenq</a> <a href="https://twitter.com/nationalrailenq">@nationalrailenq</a>	Alert Me You can sign up to Alert Me messages on the National Rail Enquiries website where you can receive train and platform notifications directly to your smart phone. <a href="http://nationalrail.co.uk/alertme">nationalrail.co.uk/alertme</a>	Contact Centre 03457 48 49 50 Calls cost no more than calls to geographic numbers (01 or 02) and may be recorded.	PlusBike <a href="http://nationalrail.co.uk/plusbike">nationalrail.co.uk/plusbike</a> For more information.



This poster shows details of popular destinations and main, frequent bus routes. Additional services may run, so please check with Traveline or see posters at local bus stops. Whilst considerable care has been taken to ensure the information contained on this poster is correct and accurate, National Rail cannot accept responsibility for any loss or inconvenience caused by any errors or omissions, or for loss, damage, injury or inconvenience relating to the cancellation, alteration, delay or diversion of a service. For any feedback, please e-mail [comments@onwardtravelposters.com](mailto:comments@onwardtravelposters.com)

Scan this code with your mobile for full station information.