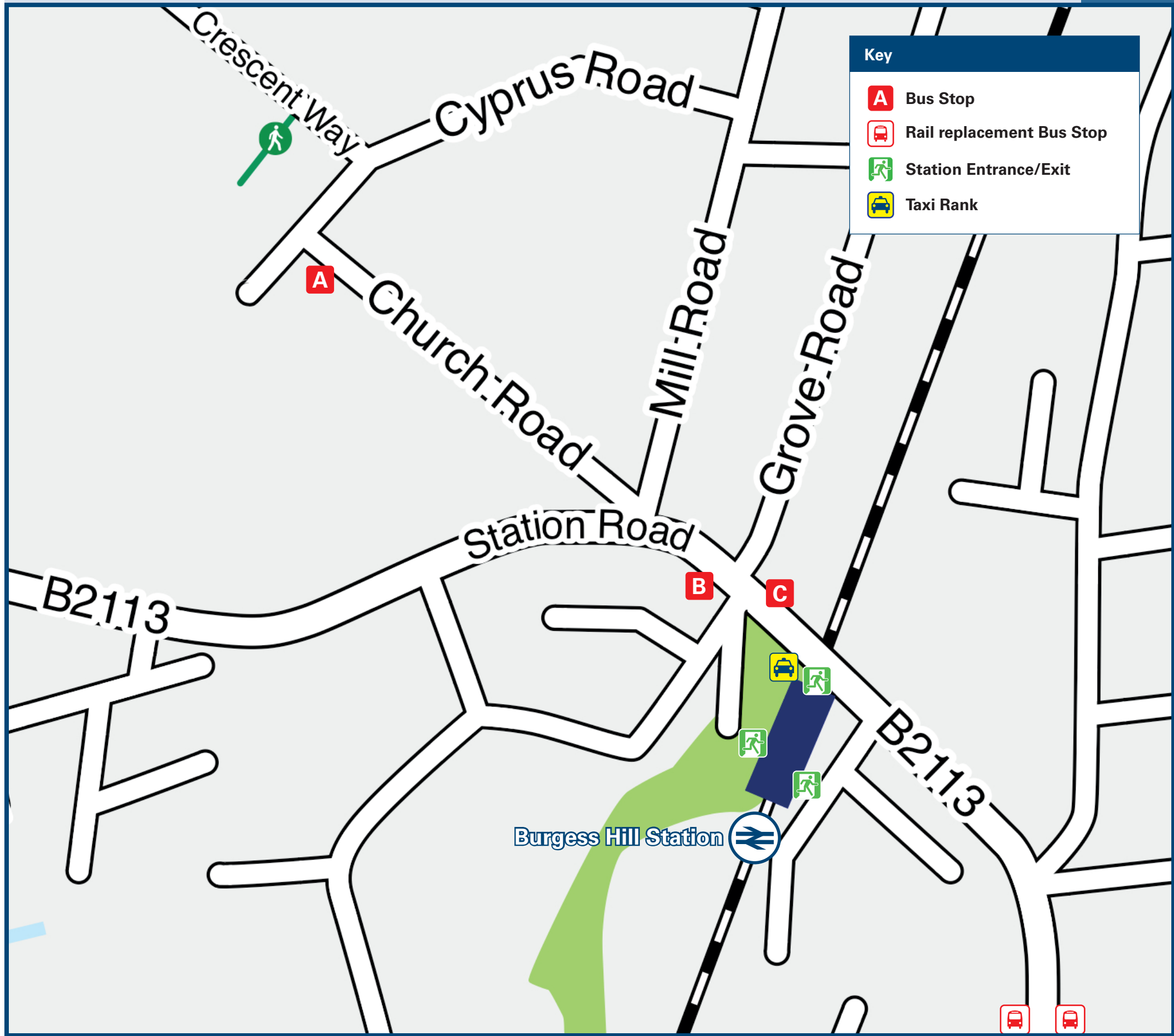




# Burgess Hill Station

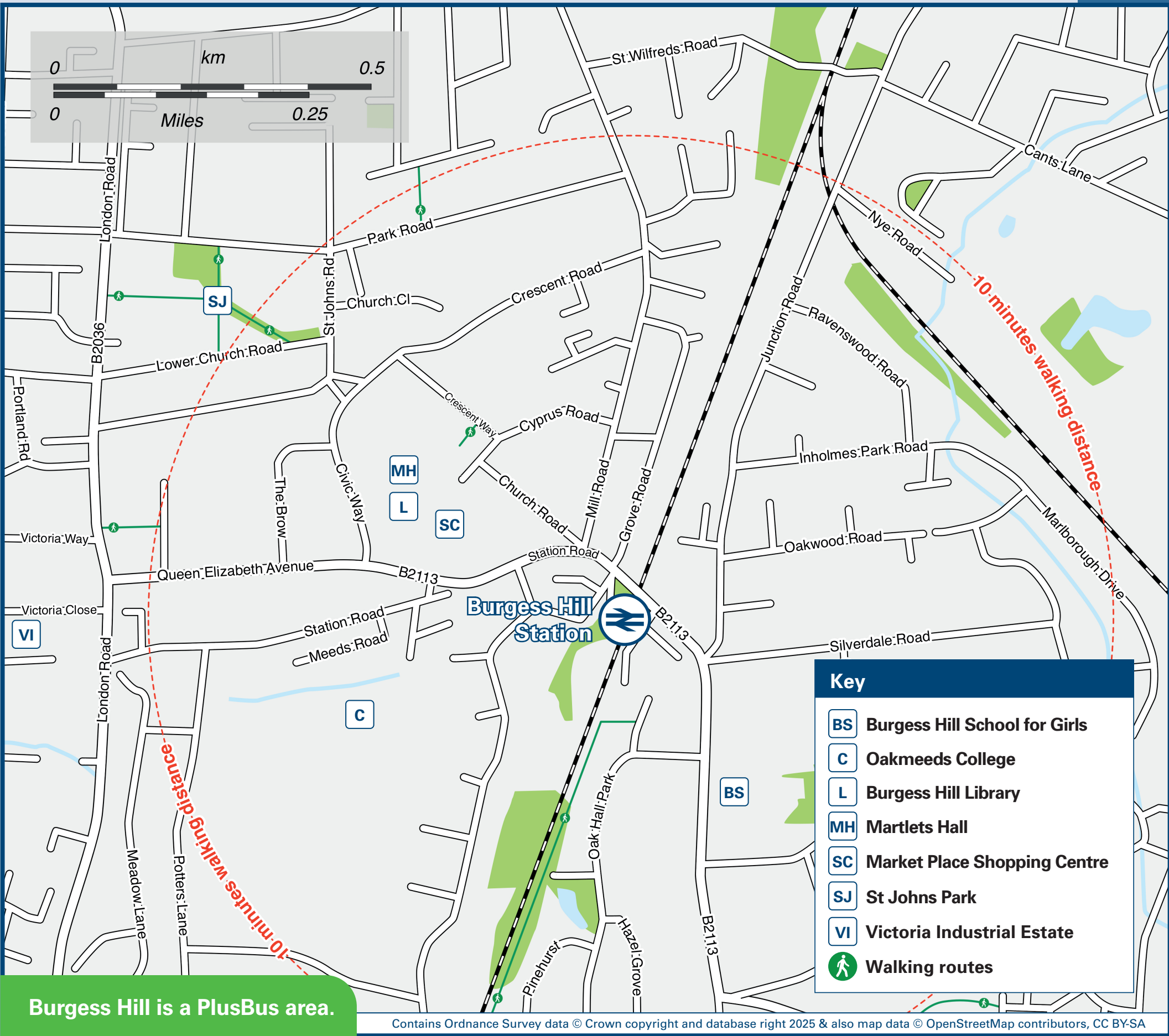
## Onward Travel Information

### Buses and Taxis



Rail replacement buses towards Wivelsfield and Haywards Heath depart from Keymer Road bus stop, 1 minute walk from the station; towards Hassocks and Brighton depart from Keymer Road bus stop, 1 minute walk from the station.

### Local area map



Burgess Hill is a PlusBus area.



**PlusBus** is a discount price 'bus pass' that you buy with your train ticket. It gives you unlimited bus travel around your chosen town, on participating buses. Visit [www.plusbus.info](http://www.plusbus.info)

### Main destinations by bus

(Data correct at July 2025)



DESTINATION	BUS ROUTES	BUS STOP
Albourne	100	A
Ardingly	272	A, C
Bramber	100	A
Brighton (City Centre / Churchill Square)	270	A
Brighton (Old Steine)	270	A
Brighton (Royal Sussex County Hospital)	271, 272	A, B
Burgess Hill Town area -		
- Burgess Hill Town FC	33, 35C	B
	35A	C
- Kings Way / Folders Lane	35A	C
	35C	B
- Leylands Park / Maple Drive	33, 35C	B
	35A	C
- St Andrews Road / Cants Lane / Manor Road	35A	C
	35C	B
- Tesco Superstore	100	A
- The Triangle Leisure Centre (alight here for St Paul's Catholic College)	100	A
- Victoria Industrial Estate	100	A
- West Park Estate (Denham Road)	35A	C
	35C	B
- West Street (The Jays)	35A	C
	35C	B

DESTINATION	BUS ROUTES	BUS STOP
	33, 35C	B
- World's End / Wivelsfield Station	35A	C
	270	A
	271, 272	A, C
Clayton (for Jack & Jill Windmills and South Downs National Park)	270	A
	271, 272	A, B
Cuckfield (High Street & Whitemans Green)	271	A, C
East Grinstead	270	A
Handcross (for National Trust Nymans Gardens)	271	A, C
	33	C
Hassocks (Stone Pound Crossroads)	270	A
	271, 272	A, B
Hassocks (Village Centre)	33	C
	33	B
Haywards Heath (Princess Royal Hospital)	270	A
	271, 272	C
Haywards Heath (Town Centre & Perry Mount Road)	33	B
	270	A
	271, 272	A, C
Henfield	100	A
Hickstead	100	A
Horsted Keynes (for the Bluebell Railway)	270	A
Hurstpierpoint (Village Centre & Willow Way Estate)	33	C
Keymer	33	C

DESTINATION	BUS ROUTES	BUS STOP
Lindfield	270	A
	272	A, C
Patcham	270	A
	271, 272	A, B
Pulborough	100	A
	270	A
Pyecombe	271, 272	A, B
Sayers Common	100	A
Small Dole	100	A
Staplefield	271	A, C
Steyning	100	A
Storrington	100	A
Upper Beeding	100	A
Washington	100	A
Wivelsfield (Ote Hall Chapel)	271, 272	A, C
Woodmancote	100	A

#### Notes

**PlusBus** destination, please see below for details.  
Bus routes 33, 35A, 35C, 100 and 272 operate Mondays to Saturdays.  
Bus routes 270 and 271 operate daily.  
For bus times and days of operation please contact Traveline on [www.traveline.info](http://www.traveline.info) or call: 0871 200 22 33  
 Direct trains operate to this destination from this Station  
 Alight bus at Horsted Keynes station (for the Bluebell Railway) on Saturdays and Sundays only. For more information about the Bluebell Railway please call 01825 720 800.

### Taxis

Burgess Hill station is served by a taxi rank or cab office. Check availability before travelling, and pre-book if necessary. Please consider using the following local operators: (Inclusion of this number doesn't represent any endorsement of the taxi firm)

**Station Taxis**  
01444 410 410

**Smith Taxis**  
01444 300 800

**500 Cars**  
01444 500 500

### Further information about all onward travel

Local Cycle Info	National Cycle Info	Bus Times	NextBuses	PlusBus
<a href="http://midsussex.gov.uk">midsussex.gov.uk</a> For more information about cycle routes.	<a href="http://sustrans.org.uk">sustrans.org.uk</a> Sustrans is the UK's leading sustainable transport charity.	See timetable displays at bus stops.  <a href="http://www.traveline.info">www.traveline.info</a> 0871 200 22 33 calls cost 15p per minute plus your phone company's access charge	<b>Find the bus times for your stop.</b> Search for a bus stop by entering a postcode, street & town or a stop name & town.	<b>plusbus.info</b> A discount price 'bus pass' that you buy with your train ticket. It gives you unlimited bus travel around your chosen town, on participating buses.

### National Rail Enquiries

Online	NRE App	Social Media	Alert Me	Contact Centre	PlusBike
<a href="http://nationalrail.co.uk">nationalrail.co.uk</a>	Free National Rail Enquiries app for iOS and Android	<a href="https://facebook.com/nationalrailenq">facebook.com/nationalrailenq</a> @nationalrailenq	You can sign up to Alert Me messages on the National Rail Enquiries website where you can receive train and platform notifications directly to your smart phone. <a href="http://nationalrail.co.uk/alertme">nationalrail.co.uk/alertme</a>	<b>03457 48 49 50</b> Calls cost no more than calls to geographic numbers (01 or 02) and may be recorded.	<a href="http://nationalrail.co.uk/plusbike">nationalrail.co.uk/plusbike</a> For more information.



**National Rail**  
Britain's train companies working together

