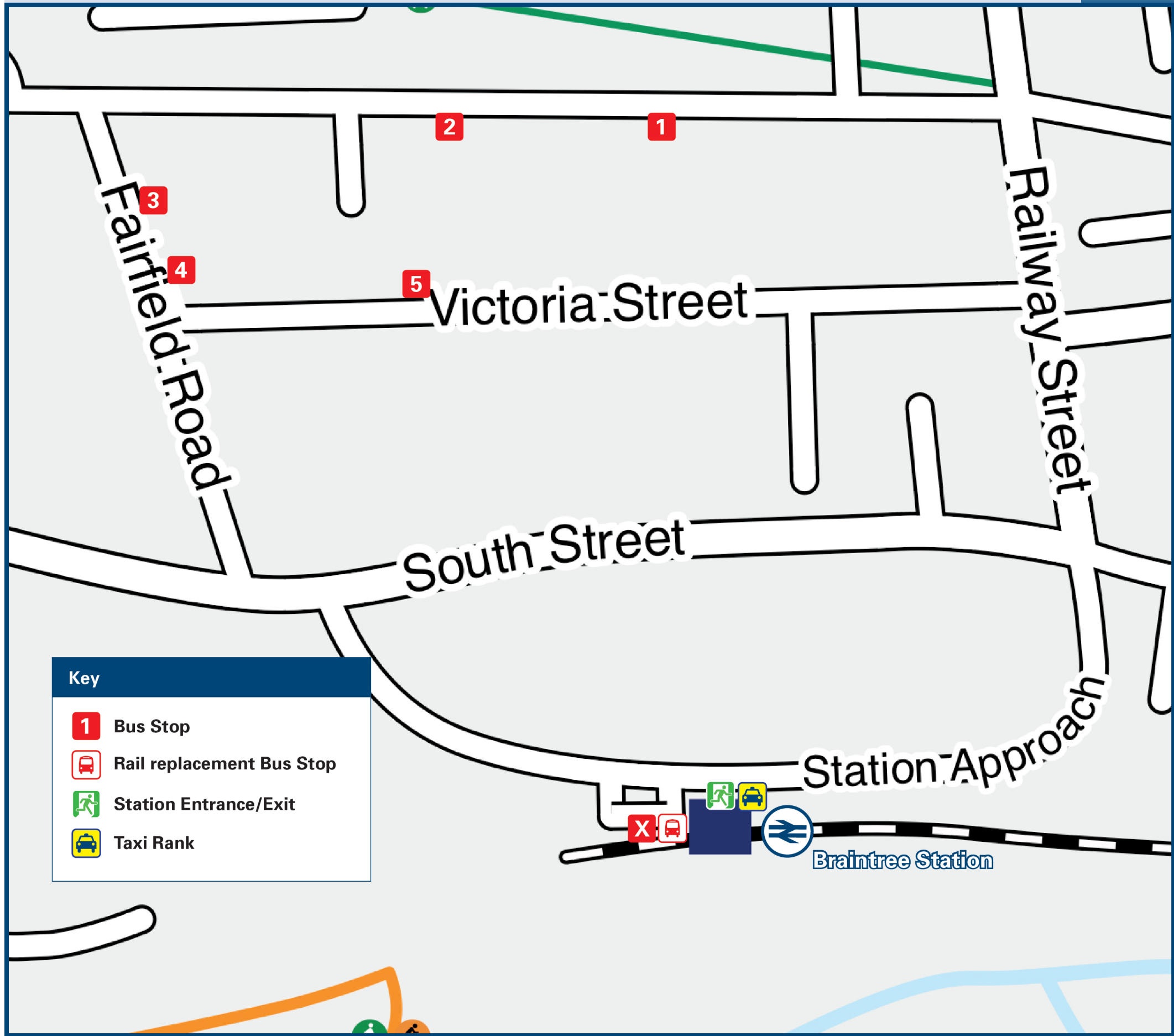




Braintree Station

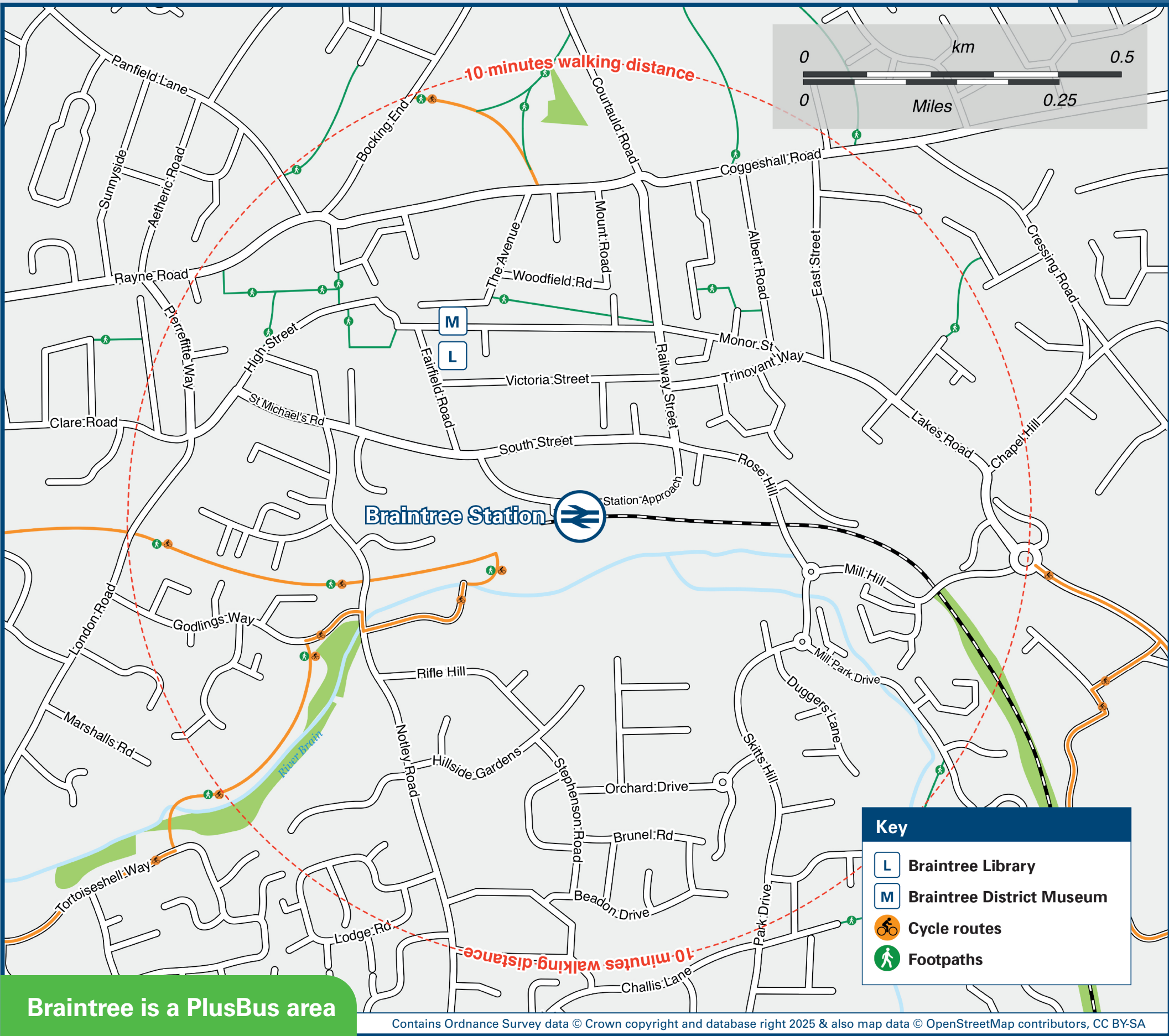
Onward Travel Information

Buses and Taxis



Rail replacement buses or coaches will depart from bus turning circle outside the station (stop {1} on the map).

Local area map



Braintree is a PlusBus area



Add **PlusBus** to your train ticket—now available on eTicket from leading rail ticketing apps—for unlimited bus travel in the **PlusBus** zone in your destination town or city. Visit www.plusbus.info

Main destinations by bus

(Data correct at September 2025)



DESTINATION	BUS ROUTES	BUS STOP
Black Notley	21*	Bus Interchange 3
Bocking (Church Street)	38, 38A	Bus Interchange 3
Bocking (Deanery Gardens)	38, 38A	Bus Interchange 3
Bocking (Six Bells)	42#	Bus Interchange 3
Bradwell	X20	Bus Interchange 1
Braintree (Beckers Green, Templar Road)	30	Bus Interchange 2
Braintree (Bus Interchange & Town Centre) 6		
Braintree (Kings Park Village)	30, 70*, 170, X20	Bus Interchange 1
Braintree Campus (Bocking)	38A	Bus Interchange 3
Braintree Freeport 4	38	Bus Interchange 2
Broomfield Hospital	70*	Bus Interchange 3
	170	Bus Interchange 5
Castle Hedingham	42#	Bus Interchange 3
Chelmsford 4	70*	Bus Interchange 3
	170	Bus Interchange 5
Coggleshall	X20	Bus Interchange 1
Colchester 4	X20	Bus Interchange 1
Cressing 4	38, 38A	Bus Interchange 2

DESTINATION	BUS ROUTES	BUS STOP
Felsted	333	Rail Station 1
Gosfield	38, 38A, 42#	Bus Interchange 3
Great Dunmow	333	Rail Station 1
	X20	Bus Interchange 5
Great Leighs	70*	Bus Interchange 3
	170	Bus Interchange 5
Great Notley	70*	Bus Interchange 3
	170	Bus Interchange 5
Halstead	38, 38A, 42#	Bus Interchange 3
High Garrett	38, 38A, 42#	Bus Interchange 3
Little Dunmow	333	Rail Station 1
Little Waltham	70*	Bus Interchange 3
	170	Bus Interchange 5
Marks Tey 4	X20	Bus Interchange 1
Rayne	333	Rail Station 1
Rivenhall	38, 38A	Bus Interchange 2
Sible Hedingham	42#	Bus Interchange 3
Silver End	38, 38A	Bus Interchange 2

DESTINATION	BUS ROUTES	BUS STOP
Stansted Airport 4	333	Rail Station 1
	X20	Bus Interchange 5
Sudbury	42#	Bus Interchange 3
Takeley	333	Rail Station 1
	X20	Bus Interchange 5
Tye Green	38, 38A	Bus Interchange 2
Witham 4	38, 38A	Bus Interchange 2

Notes

- PlusBus** destination, please see below for details.
- Bus routes 30, 38 and 38A operate Mondays to Saturdays. No Sunday or Public Holiday service.
- Bus routes 170, 333 & X20 operate daily services.
- For bus times and days of operation please contact Traveline on www.traveline.info or call: 0871 200 22 33
- 4** Direct trains operate to this destination from this station.
- 4** Change trains at Witham for this destination.
- AIR Change here for domestic and international airline services.
- 6** It's a 7 minutes walk from this station to Braintree town centre and Bus Interchange, see the Buses and Taxis map.
- * Bus routes 21 & 70 operate limited daytime services on Mondays to Fridays, only. No evenings, Saturdays or Sundays services.
- # Bus route 42 operates a limited daytime service on Mondays to Saturdays, only. No evenings, or Sundays service.

Taxis

Braintree station is served by a taxi rank or cab office. Check availability before travelling, and pre-book if necessary. Please consider using the following local operators: (Inclusion of this number doesn't represent any endorsement of the taxi firm)

All Car taxis
01376 347 888

Call Taxi Braintree
01376 310 610

Yelo
01376 334 455

Further information about all onward travel

Local Cycle Info	National Cycle Info	Bus Times	PlusBus
braintree.gov.uk For more information about cycle routes.	sustrans.org.uk Sustrans is the UK's leading sustainable transport charity.	See timetable displays at bus stops. www.traveline.info 0871 200 22 33 calls cost 15p per minute plus your phone company's access charge	plusbus.info PlusBus is a discount price 'bus pass' that you buy with your train ticket. It gives you unlimited bus travel around your chosen town, on participating buses. Visit www.plusbus.info



National Rail Enquiries

Online	NRE App	Social Media	Alert Me	Contact Centre	PlusBike
nationalrail.co.uk	Free National Rail Enquiries app for iOS and Android	facebook.com/nationalrailenq @nationalrailenq	You can sign up to Alert Me messages on the National Rail Enquiries website where you can receive train and platform notifications directly to your smart phone. nationalrail.co.uk/alertme	03457 48 49 50 Calls cost no more than calls to geographic numbers (01 or 02) and may be recorded.	nationalrail.co.uk/plusbike For more information.

greateranglia



National Rail
Britain's train companies working together

