



# Braintree Station

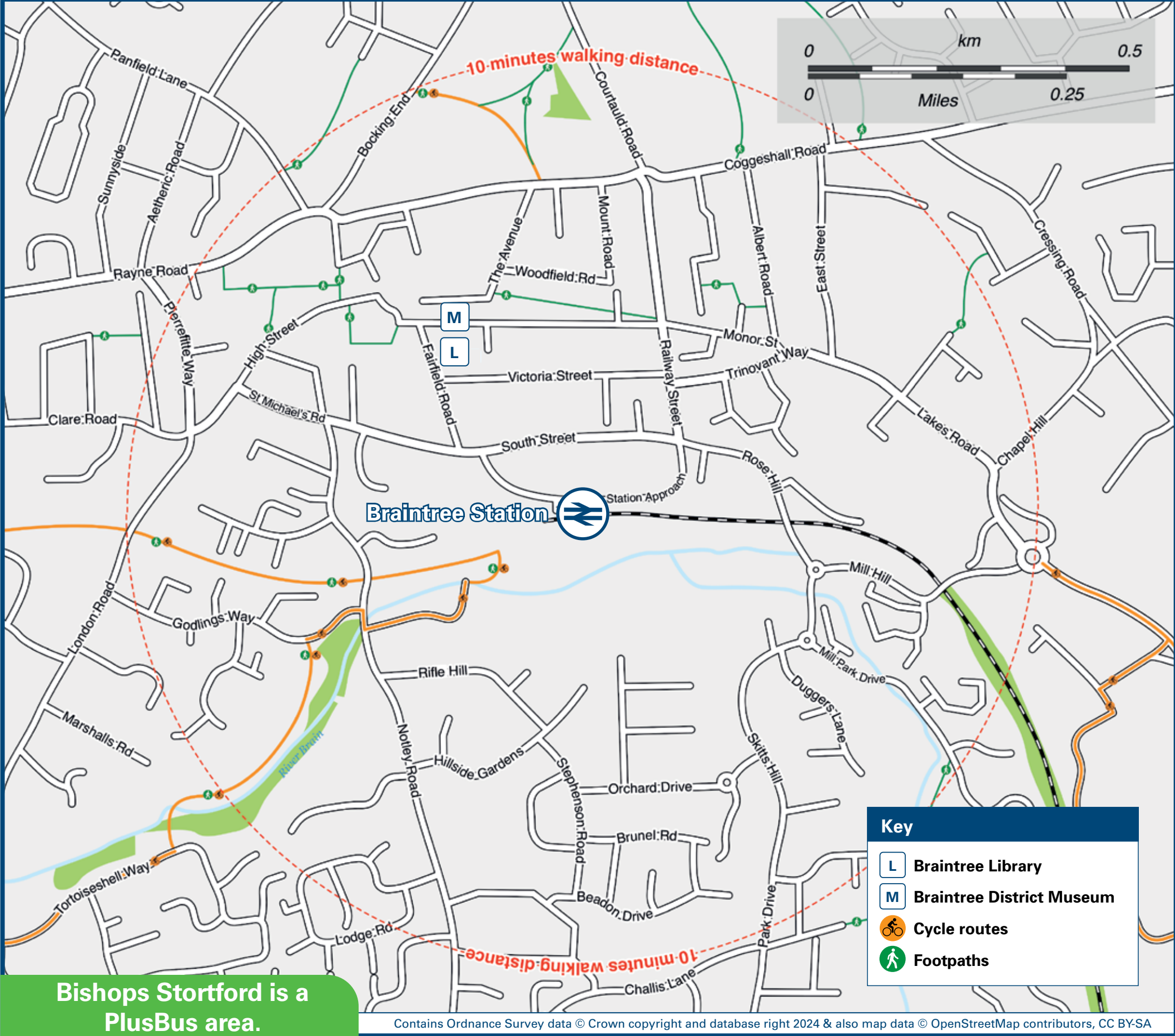
## Onward Travel Information

### Buses and Taxis



Rail replacement buses or coaches will depart from bus turning circle outside the station (stop {1} on the map).

### Local area map



**PlusBus** is a discount price ‘bus pass’ that you buy with your train ticket. It gives you unlimited bus travel around your chosen town, on participating buses. Visit [www.plusbus.info](http://www.plusbus.info)

### Main destinations by bus



DESTINATION	BUS ROUTES	BUS STOP
● Black Notley	21** DigiGo*	Bus Interchange <b>3</b> Rail Station <b>1</b>
● Bocking (Church Street)	38, 38A, 370^	Bus Interchange <b>3</b>
● Bocking (Deanery Gardens)	38, 38A	Bus Interchange <b>3</b>
● Bocking (Post Office/Panfield Lane)	DigiGo*	Rail Station <b>1</b>
Bradwell	320+, X20, X70+	Bus Interchange <b>1</b>
● Braintree (Beckers Green, Templar Road)	30	Bus Interchange <b>2</b>
● Braintree (Bus Interchange & Town Centre)	38A, 89	Rail Station <b>1</b>
● Braintree (Kings Park Village)	30, 70, 170, 320+, X20, X70+	Bus Interchange <b>1</b>
● Braintree Campus (Bocking)	89# 38A, 89, 370^	Rail Station <b>1</b> Bus Interchange <b>3</b>
Braintree Freeport	38	Bus Interchange <b>2</b>
Broomfield Hospital	70	Bus Interchange <b>3</b>
	170, 370^, X70+	Bus Interchange <b>3</b>
Castle Hedingham	89#	Rail Station <b>1</b>
Chelmsford	70	Bus Interchange <b>3</b>
	170, 370^, X70+	Bus Interchange <b>3</b>
Coggeshall	320+, X20, X70+	Bus Interchange <b>1</b>
Colchester	320+, X20, X70+	Bus Interchange <b>1</b>
Cressing	38, 38A	Bus Interchange <b>2</b>
Felsted	133	Bus Interchange <b>3</b>
Finchingfield	DigiGo*	Rail Station <b>1</b>
Gosfield	38, 38A	Bus Interchange <b>3</b>
Great Bardfield	DigiGo*	Rail Station <b>1</b>

DESTINATION	BUS ROUTES	BUS STOP
Great Dunmow	133 X20	Bus Interchange <b>6</b> Bus Interchange <b>5</b>
Great Leighs	70 170, 370^	Bus Interchange <b>6</b> Bus Interchange <b>5</b>
● Great Notley	DigiGo* 70 170, 320+, 370^, X70+	Rail Station <b>1</b> Bus Interchange <b>6</b> Bus Interchange <b>5</b>
Great Yeldham	89#	Rail Station <b>1</b>
Halstead	89# 38, 38A, 89, 370^	Rail Station <b>1</b> Bus Interchange <b>8</b>
High Garrett	89# 38, 38A, 89, 370^	Rail Station <b>1</b> Bus Interchange <b>8</b>
Jaspers Green	DigiGo*	Rail Station <b>1</b>
Little Dunmow	133	Bus Interchange <b>6</b>
Little Waltham	70 170, 370^, X70+	Bus Interchange <b>6</b> Bus Interchange <b>5</b>
Marks Tey	320, X20, X70+	Bus Interchange <b>1</b>
Panfield	DigiGo*	Rail Station <b>1</b>
Rayne	133	Bus Interchange <b>6</b>
Rivenhall	38, 38A	Bus Interchange <b>2</b>
Shalford (& Shalford Green)	DigiGo*	Rail Station <b>1</b>
Sible Hedingham	89#	Rail Station <b>1</b>
Silver End	38, 38A	Bus Interchange <b>2</b>
	133	Bus Interchange <b>6</b>
Stansted Airport	X20	Bus Interchange <b>5</b>

DESTINATION	BUS ROUTES	BUS STOP
● Towerlands Leisure Centre	DigiGo*	Rail Station <b>1</b>
● Tye Green	38, 38A	Bus Interchange <b>2</b>
Wethersfield	DigiGo*	Rail Station <b>1</b>
Witham	38, 38A	Bus Interchange <b>2</b>

#### Notes

● **PlusBus** destination, please see below for details.  
Bus routes 30, 38, 38A, 70, 89 and 170 operate Mondays to Saturdays. No Sunday or Public Holiday service.  
Bus routes 133, 370, X20 operate daily.  
For bus times and further information contact Traveline on 0871 200 22 33 or Arriva (for bus route 133); First Essex (for bus routes 70, 170, 320, 370, X20 & X70) call 0345 646 0707; Hedingham & Chambers (for bus route 89) call 03301 020 801 or Stephensons (for bus routes 21, 30, 38 & 38A) call 01376 503 050.  
 Direct trains operate to this destination from this station.  
 Change trains at Witham for this destination.  
 It's a 7 minutes walk from this station to Braintree town centre and Bus Interchange, see the Buses and Taxis map.  
\* DigiGo is a demand responsive bus service that operates in this area 7 days a week and runs 6am to 10pm on weekdays and 7am to 10pm at weekends. To book download the TravelEssex app from Google Play or Apple App Store or 'phone 01245 203 952 (Monday to Friday 10am to 12pm) or for more information go to [www.digigo.uk](http://www.digigo.uk)  
\*\* Bus route 21 operates Mondays to Fridays only, on Saturdays service replaced by DigiGo (see \* Note), also can be used on Sundays.  
# Bus route 89 departs from Braintree station, stop {1} on Mondays to Saturdays at: 07:36(Mon-Fri), 07:42(Sat), 08:42, 09:37, 10:37, 11:37, 12:37, 13:37, 14:37(Mon-Fri), 15:37(Sat), 16:37, 17:37(Sat), 17:50(Mon-Fri) & 18:37.  
+ Bus routes 320 and X70 operate a limited service Mondays to Fridays only.  
^ Bus route 370 operates evenings Mondays to Saturdays and hourly daytime on Sundays and Public Holidays.

### Taxis

Braintree station is served by a taxi rank or cab office. Check availability before travelling, and pre-book if necessary. Please consider using the following local operators: (Inclusion of this number doesn't represent any endorsement of the taxi firm)

**Alcars**  
01376 347 888

**Call Taxi Braintree**  
01376 310 610

**Yelo**  
01376 334 455

**Zoom Cars**  
01376 553 553

#### Further information about all onward travel

Local Cycle Info	National Cycle Info	Bus Times	NextBuses	PlusBus
<a href="http://braintree.gov.uk">braintree.gov.uk</a> For more information about cycle routes.	<a href="http://sustrans.org.uk">sustrans.org.uk</a> Sustrans is the UK's leading sustainable transport charity.	See timetable displays at bus stops.  <a href="http://www.traveline.info">www.traveline.info</a> 0871 200 22 33 calls cost 15p per minute plus your phone company's access charge	Find the bus times for your stop. Search for a bus stop by entering a postcode, street & town or a stop name & town.  	<a href="http://plusbus.info">plusbus.info</a> A discount price 'bus pass' that you buy with your train ticket. It gives you unlimited bus travel around your chosen town, on participating buses.

#### National Rail Enquiries

Online	NRE App	Social Media	Alert Me	Contact Centre	PlusBike
<a href="http://nationalrail.co.uk">nationalrail.co.uk</a>	Free National Rail Enquiries app for iOS and Android	<a href="https://facebook.com/nationalrailenq">facebook.com/nationalrailenq</a> @nationalrailenq	You can sign up to Alert Me messages on the National Rail Enquiries website where you can receive train and platform notifications directly to your smart phone. <a href="http://nationalrail.co.uk/alertme">nationalrail.co.uk/alertme</a>	03457 48 49 50 Calls cost no more than calls to geographic numbers (01 or 02) and may be recorded.	<a href="http://nationalrail.co.uk/plusbike">nationalrail.co.uk/plusbike</a> For more information.



**National Rail**  
Britain's train companies working together

