



# Bicester Village Station

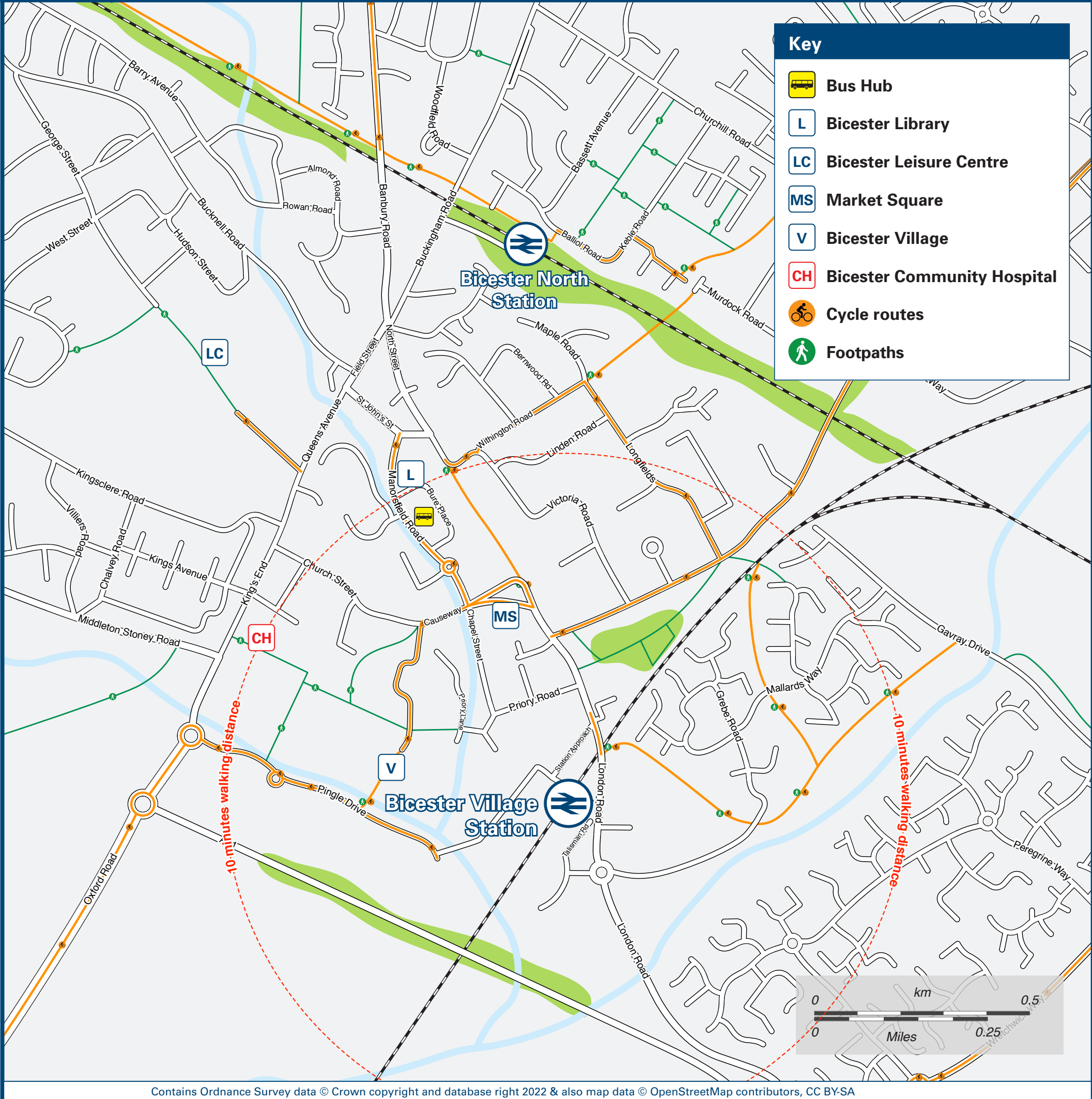
## Onward Travel Information

### Buses and Taxis



Rail replacement bus services depart from the front of the station on Station Approach Road.

### Local area map



### Main destinations by bus

(Data correct at May 2023)



| DESTINATION   | BUS ROUTES   | BUS STOP |
|---|--|----------|
| Ambrosden   | 29#, H5  |          |
| Barton  | H5   |          |
| Bicester North Railway Station                      | BV1  |          |
| Bicester Town area -                                |  |          |
| - Bicester Town Centre (for Pioneer Square Bus Hub) | 5 - 10 minutes walk from this station see Local area map   |          |
|   | 25, 500  |          |
| - Bicester Village (Outlet Shopping)                | 5 minutes walk from this station, see maps   |          |
| - Bure Park (Banbury Road)                          | 500  |          |
| - Caversfield                                       | Buses depart from Pioneer Square Bus Hub, 5-10 minutes walk from this Station. See Local area map. |          |

| DESTINATION                | BUS ROUTES   | BUS STOP |
|----------------------------|--|----------|
| - Glory Farm               | Buses depart from Pioneer Square Bus Hub, 5-10 minutes walk from this Station. See Local area map. |          |
| - Southwold (Banbury Road) | E1#  |          |
| Brackley                   | 500  |          |
| Bullington Prison          | 29#  |          |
| Calvert                    | 18~  |          |
| Elmsbrook                  | 500  |          |
| Graven Hill                | 29#, H5  |          |
| Heyford Park               | 25   |          |
| Islip                      | H5   |          |
| John Radcliffe Hospital    | H5   |          |

| DESTINATION   | BUS ROUTES | BUS STOP |
|---|------------|----------|
| Lower Amcott  | 29#        |          |
| Lower Heyford   | 25         |          |
| Marsh Gibbon  | 18~        |          |
| Middleton Stoney  | 25         |          |
| Steeple Claydon   | 18~        |          |
| Upper Amcott  | 29#        |          |
| Upper Heyford   | 25         |          |
| <b>Notes</b>  |            |          |
| Bus routes 500 & H5 operate Mondays to Saturdays services, only. No Sunday services.<br>~ Bus route 18 runs a limited Mondays to Fridays service, only. No Saturday or Sunday service.<br># Bus route 29 runs a Sunday service, only.<br>Change here for connecting National Rail services. |            |          |

### Taxis

Bicester Village Station is served by a taxi rank or cab office. Check availability before travelling, and pre-book if necessary. Please consider using the following local operators: (Inclusion of this number doesn't represent any endorsement of the taxi firm)

001 Alpha Cars  
01869 252 525

Bicester Cars Ltd  
01869 908 908

Star Cars  
01869 252 526

### Further information about all onward travel

| Local Cycle Info   | National Cycle Info   | Bus Times   | NextBuses   | PlusBus   |
|--|---|---|---|---|
| <a href="http://cherwell.gov.uk">cherwell.gov.uk</a><br>For more information about cycle routes. | <a href="http://sustrans.org.uk">sustrans.org.uk</a><br>Sustrans is the UK's leading sustainable transport charity. | See timetable displays at bus stops.<br><br><a href="http://www.traveline.info">www.traveline.info</a><br>0871 200 22 33<br>calls cost 10p per minute plus your phone company's access charge | <br>Find the bus times for your stop.<br>Search for a bus stop by entering a postcode, street & town or a stop name & town. | <br><a href="http://plusbus.info">plusbus.info</a><br>A discount price 'bus pass' that you buy with your train ticket. It gives you unlimited bus travel around your chosen town, on participating buses. |

### National Rail Enquiries

| Online   | NRE App  | Social Media  | Alert Me   | Contact Centre  | PlusBike  |
|--|--|---|--|---|---|
| <a href="http://nationalrail.co.uk">nationalrail.co.uk</a> | Free National Rail Enquiries app for iOS and Android | <a href="https://facebook.com/nationalrailenq">facebook.com/nationalrailenq</a><br>@nationalrailenq | You can sign up to Alert Me messages on the National Rail Enquiries website where you can receive train and platform notifications directly to your smart phone.<br><a href="http://nationalrail.co.uk/alertme">nationalrail.co.uk/alertme</a> | 03457 48 49 50<br>Calls cost no more than calls to geographic numbers (01 or 02) and may be recorded. | <a href="http://nationalrail.co.uk/plusbike">nationalrail.co.uk/plusbike</a><br>For more information. |

Chilternrailways



National Rail  
Britain's train companies working together



This poster shows details of popular destinations and main, frequent bus routes. Additional services may run, so please check with Traveline or see posters at local bus stops. Whilst considerable care has been taken to ensure the information contained on this poster is correct and accurate, National Rail cannot accept responsibility for any loss or inconvenience caused by any errors or omissions, or for loss, damage, injury or inconvenience relating to the cancellation, alteration, delay or diversion of a service. For any feedback, please e-mail [comments@onwardtravelposters.com](mailto:comments@onwardtravelposters.com)

Scan this code with your mobile for full station information.