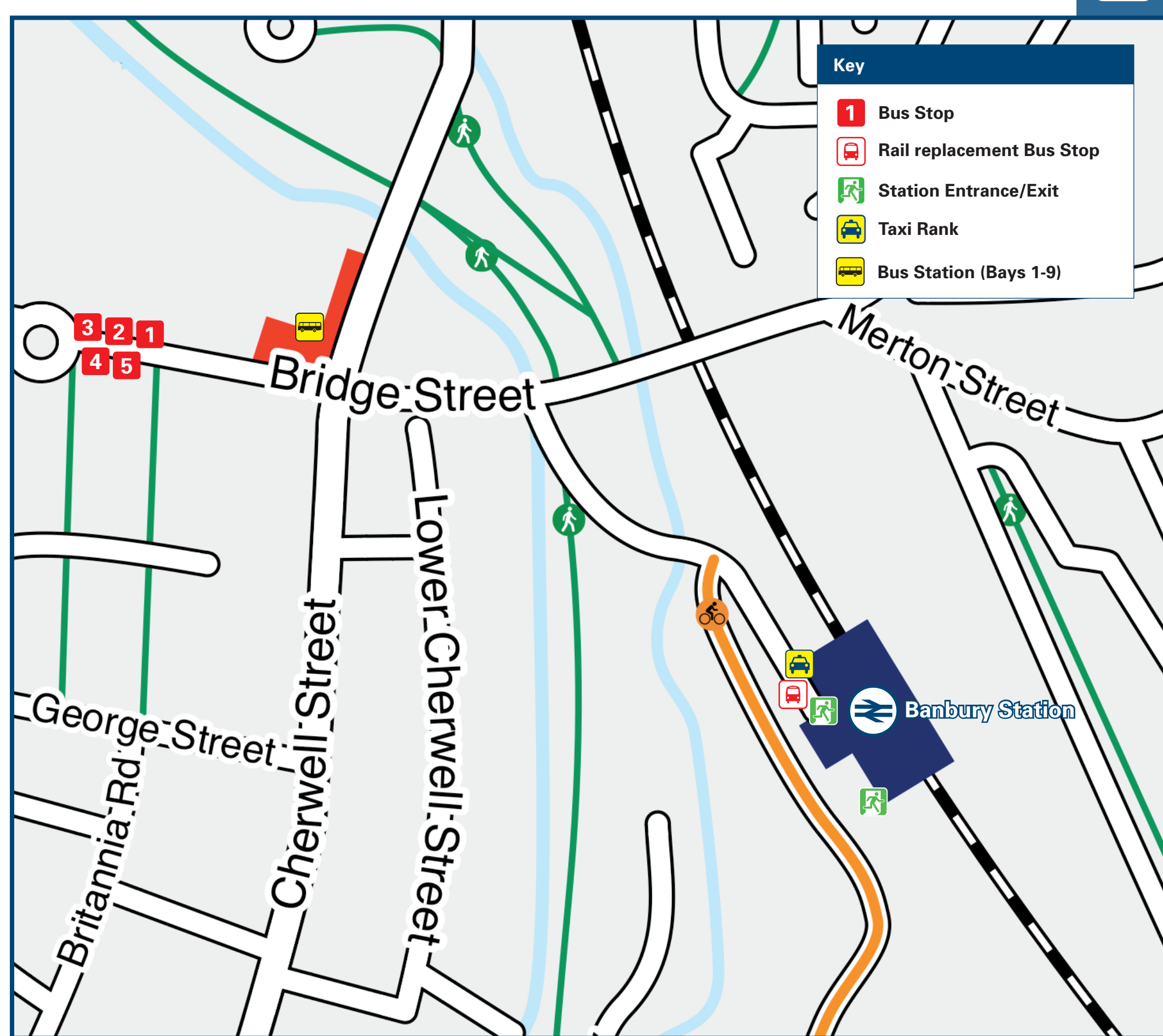




# Banbury Station

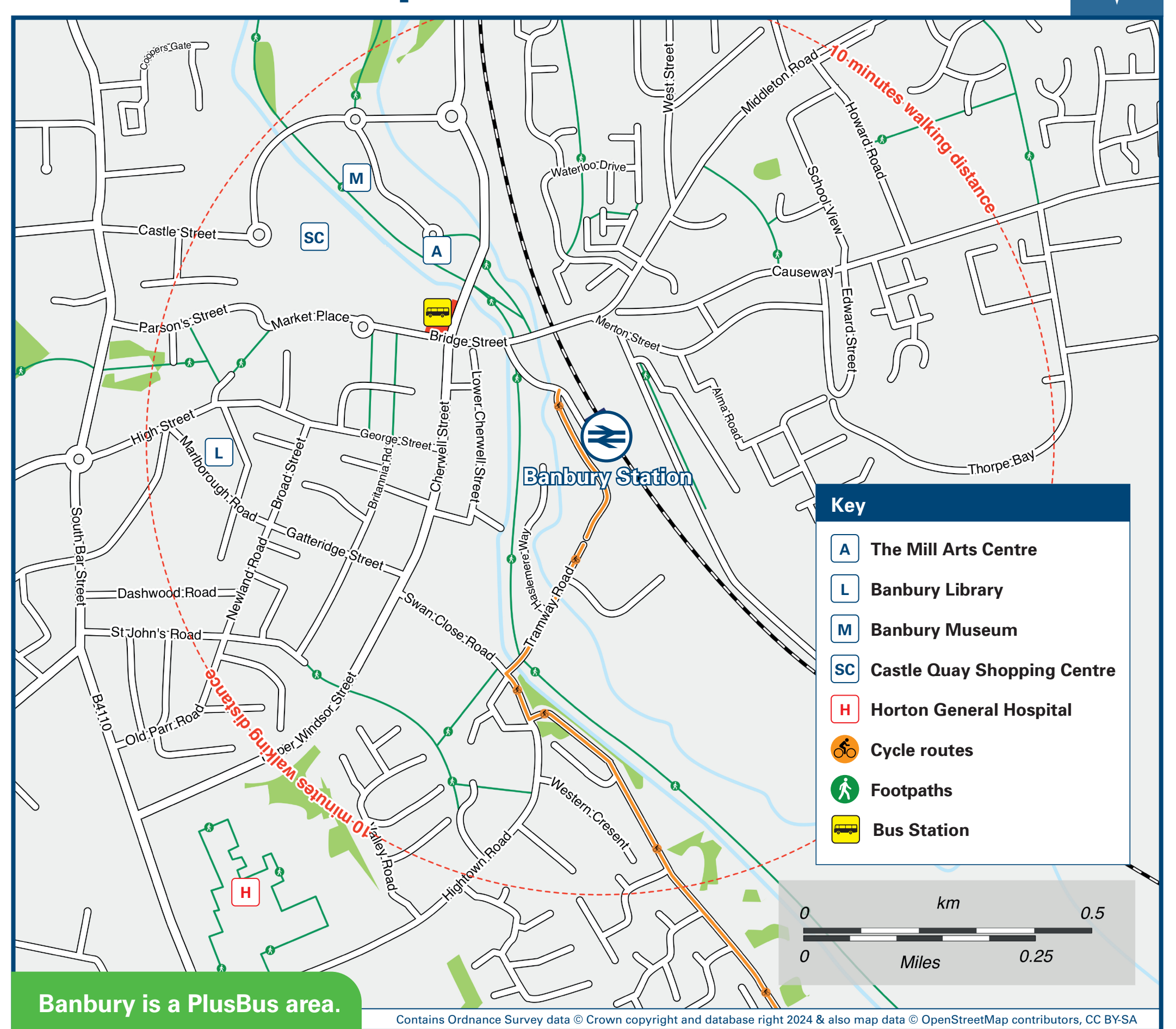
# Onward Travel Information

## Buses and Taxis



Rail replacement bus services depart from the front of the station.

## Local area map



Banbury is a PlusBus area.



PlusBus is a discount price 'bus pass' that you buy with your train ticket. It gives you unlimited bus travel around your chosen town, on participating buses. Visit [www.plusbus.info](http://www.plusbus.info)

## Main destinations by bus

(Data correct at April 2024)

DESTINATION	BUS ROUTES	BUS STOP
Adderbury	S4	Bus Stn Bay 6
Bloxham	488	Bus Stn Bay 7
Bodicote	B3	Bridge St Stop 4
Brackley	S4	Bus Stn Bay 6
Bretch Hill	500	Bus Stn Bay 5
Byfield	B5	Bridge St Stop 3
Calthorpe	200	Bus Stn Bay 5
Chacombe	B1#	Bridge St Stop 1
Cherwell Heights	B3	Bridge St Stop 4
Chipping Norton	S4	Bus Stn Bay 6
Chipping Warden	488	Bus Stn Bay 7
Daventry	500	Bus Stn Bay 5
Deddington	200	Bus Stn Bay 5
Easington	S4	Bus Stn Bay 6
Farthinghoe	B1#	Bridge St Stop 1
Gateway Retail Park	488	Bus Stn Bay 7
Gaydon	500	Bus Stn Bay 5
	B9	Bridge St Stop 2
	77A	Bus Stn Bay 8

DESTINATION	BUS ROUTES	BUS STOP
Great Rollright	488	Bus Stn Bay 7
Grimsbury	B7A#	Bridge St Stop 1
Hardwick	200, 500	Bus Stn Bay 5
Hardwick Hill	B9	Bridge St Stop 1
Hook Norton	B4	Bridge St Stop 5
Horton General Hospital	488	Bus Stn Bay 7
Kidlington	488	Bus Stn Bay 7
Kineton	S4	Bus Stn Bay 6
Leamington Spa	76*	Bus Stn Bay 8
Middleton Cheney	77A	Bus Stn Bay 8
Middle Tysoe	500	Bus Stn Bay 5
Milcombe	76*	Bus Stn Bay 8
Neithrop	488	Bus Stn Bay 7
Over Norton	B5	Bridge St Stop 3
Oxford	B9	Bridge St Stop 1
Oxford Parkway Rail Station	488	Bus Stn Bay 7
Oxhill	S4	Bus Stn Bay 6
Poets Corner	S4	Bus Stn Bay 6
	76*	Bus Stn Bay 8
	B7B#	Bridge St Stop 1
	488	Bus Stn Bay 7

DESTINATION	BUS ROUTES	BUS STOP
Ruscote	B8#, B9	Bridge St Stop 1
Shenington	76*	Bus Stn Bay 8
Steeple Aston	S4	Bus Stn Bay 6
Stratford-upon-Avon	76*	Bus Stn Bay 8
Tackley	S4	Bus Stn Bay 6
Twyford	S4	Bus Stn Bay 6
Wardington	200	Bus Stn Bay 5
Woodford Halse	200	Bus Stn Bay 5
Wroxton	76*	Bus Stn Bay 8

### Notes

- PlusBus destination, please see below for details.
- PlusBus tickets are not valid on services 77A, B1, B7A, B7B or B8. Bus routes B3, B4 and 200 run Mondays to Saturdays services, only. No Sunday services.
- Bus routes B5, B9, 488, 500 and S4 run daily.
- 🚆 Direct trains operate to this destination from this station.
- 🔄 Change here for connecting National Rail services.
- \* Bus routes 76 & 77A run limited Mondays to Saturdays service, only.
- # Bus routes B1, B7A, B7B & B8 operate limited Mondays to Fridays services, only.

## Taxis

Banbury Station is served by a taxi rank or cab office. Check availability before travelling, and pre-book if necessary. Please consider using the following local operators: (Inclusion of this number doesn't represent any endorsement of the taxi firm)

Castle Cars Ltd  
01295 270 011

Banbury Station Taxis  
01295 262 927

Royal Cars Banbury  
01295 255 555

## Further information about all onward travel

<b>Local Cycle Info</b> <a href="http://cherwell.gov.uk">cherwell.gov.uk</a> For more information about cycle routes.	<b>National Cycle Info</b> <a href="http://sustrans.org.uk">sustrans.org.uk</a> Sustrans is the UK's leading sustainable transport charity.	<b>Bus Times</b> See timetable displays at bus stops. <a href="http://www.traveline.info">www.traveline.info</a> 0871 200 22 33 calls cost 12p per minute plus your phone company's access charge	<b>NextBuses</b> Find the bus times for your stop. Search for a bus stop by entering a postcode, street & town or a stop name & town.	<b>PlusBus</b> <a href="http://plusbus.info">plusbus.info</a> A discount price 'bus pass' that you buy with your train ticket. It gives you unlimited bus travel around your chosen town, on participating buses.
---	---	---	---	---

## National Rail Enquiries

<b>Online</b> <a href="http://nationalrail.co.uk">nationalrail.co.uk</a>	<b>NRE App</b> Free National Rail Enquiries app for iOS and Android	<b>Social Media</b> facebook.com/nationalrailenq @nationalrailenq	<b>Alert Me</b> You can sign up to Alert Me messages on the National Rail Enquiries website where you can receive train and platform notifications directly to your smart phone. <a href="http://nationalrail.co.uk/alertme">nationalrail.co.uk/alertme</a>	<b>Contact Centre</b> 03457 48 49 50 Calls cost no more than calls to geographic numbers (01 or 02) and may be recorded.	<b>PlusBike</b> <a href="http://nationalrail.co.uk/plusbike">nationalrail.co.uk/plusbike</a> For more information.
---	--	---	---	--	--



**National Rail**  
Britain's train companies working together

