



# Onward Travel Information

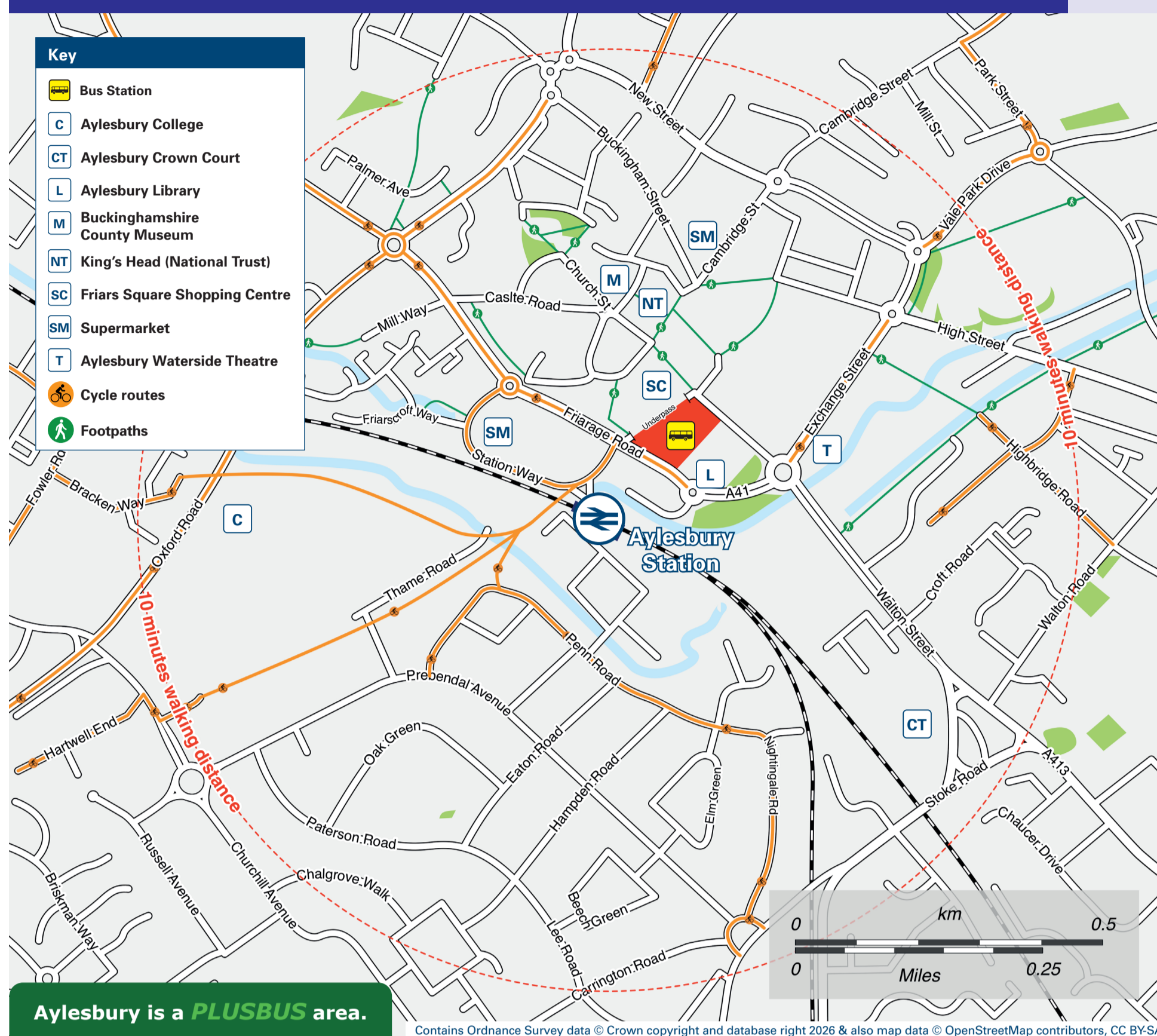
## Aylesbury Station

### Buses and Taxis



Rail replacement bus services depart from the front of the station.

### Local area map



Add **PlusBus** to your train ticket—now available on eTicket from leading rail ticketing apps—for unlimited bus travel in the **PlusBus** zone in your destination town or city. Visit [plusbus.info](https://www.plusbus.info)

### Main destinations by bus

(Data correct at March 2026)



DESTINATION	BUS ROUTES	BUS STOP
Aston Abbots	165	Bus Station
Aston Clinton	61, 62, 500, 501**	Bus Station
Aylesbury Town Sports Clubs (Wendover Road)	50	Bus Station
Bedgrove	7, 7B#	A, Bus Station
Berkhamsted (Town Hall)	500, X5, X500	Bus Station
Berryfields	4, 4A~, 4E#	A, Bus Station
Bicester and Bicester Village	17	Bus Station
Bierton	K1	A, Bus Station
	100, 150, 165	Bus Station
Buckingham	60, 60A~, X6, X60**	Bus Station
Buckingham Park	6, 6A~, 6B*	A, Bus Station
Calvert	16	Bus Station
Chearsley	110	Bus Station
Cheddington	62	Bus Station
Coppice Estate	14, 14E#	A, Bus Station
Cublington	165	Bus Station
Cuddington	110	Bus Station
Dinton	110, X20	Bus Station
Dunstable	61	Bus Station
Edgcott	16	Bus Station
Elm Farm	50	Bus Station
Elmhurst	2, 6, 6A~, 14, 14E#	A, Bus Station
Fairford Leys	1, 1E#	A, Bus Station
Fenny Stratford	100, X14~	Bus Station
Fleet Marston	16, 17	Bus Station
Great Horwood	60A~	Bus Station
Great Kimble	130, 300	Bus Station
Grendon Underwood	16	Bus Station
Haddenham (also Haddenham & Thame Parkway Station)	X20	Bus Station
Hawkslade Farm Estate	9~, 10**	Bus Station
Haydon Hill	2, 2E#	A, Bus Station
Headington	X20	Bus Station
Heath & Reach	150	Bus Station
Hemel Hempstead	500, X500	Bus Station
High Wycombe	130, 300	Bus Station
Ivinghoe	61, 502*	Bus Station

DESTINATION	BUS ROUTES	BUS STOP
Kingsbrook	K2	A, Bus Station
Leighton Buzzard	X4, X14~	Bus Station
Long Crendon	150, 165, X4	Bus Station
Long Marston	110	Bus Station
Marsworth	62	Bus Station
Milton Keynes (City Centre & Rail Station)	62, 502*	Bus Station
	100, X4, X6, X14~	Bus Station
Oxford (City Centre & Rail Station)	X20	Bus Station
Padbury	60, X6, X60**	Bus Station
Pitstone	61, 62, 502*	Bus Station
Princes Risborough	130, 300	Bus Station
Quainton	16	Bus Station
Quarrendon (Meadowcroft)	2, 2E#, 4, 4A~, 4E#	A, Bus Station
RAF Halton	50, 502*	Bus Station
Royal Bucks Hospital	2E#, 4, 4A~, 4E#, 6, 6A~, 16, 17, 60	A, Bus Station
	11	G2
Southcourt (Church Square)	9~, 10**	Bus Station
Springhill Prison	16	Bus Station
Steeple Claydon	16	Bus Station
Stoke Mandeville Hampden Hall (Wendover Road)	50, 502*	Bus Station
Stoke Mandeville Hospital	9~, 130, 300	Bus Station
Stoke Mandeville Woolpack	130, 300	Bus Station
Stone	110, X20	Bus Station
Thame	110, X20	Bus Station
Tring	61, 62, 500, 501**, 502*, X500	Bus Station
Waddesdon (for Waddesdon Manor, National Trust)	16, 17	Bus Station
Walton Court	9~, 10**	Bus Station
	11	G2
Watermead (Watermeadow)	6, 6A~, 66*	A, Bus Station
Watford	501*	Bus Station
Wendover	50, 502*	Bus Station
Westcott	16, 17	Bus Station
Weston Turville	50, 502*	Bus Station
Whitchurch	60, 60A~, X6, X60**	Bus Station

DESTINATION	BUS ROUTES	BUS STOP
Wilstone	62	Bus Station
Wing	100, 150, 165, X4, X14~	Bus Station
Wingrave	165	Bus Station
Wingrave Cross Roads	100, 150, 165, X4, X14~	Bus Station
Winslow	60, 60A~, X6, X60**	Bus Station
Worminghall	110	Bus Station

#### NOTES

- PlusBus destination, please see below for details.
- Bus routes 6, 11, 16, 17, 50, 60, 61, 62, 110, 150, 165, 500, K1, K2, X4, X6 and X500 run Mondays to Saturdays. No Sunday services.
- Bus routes 1, 2, 4, 7, 10, 14, 100, 130, 300 and X20 run daily services, Mondays to Sundays.
- Village Connect Aylesbury is a demand responsive transport service – bookable by phone or the Village Connect app. This can be booked to and from Wendover Station, Stoke Mandeville Station and Aylesbury Station and serves the villages of Aston Clinton, Bishopstone, Halton, Hartwell, Hulcott, Stoke Mandeville, Weedon and Weston Turville. Please see [www.buckinghamshire.gov.uk/village-connect-minibuses](https://www.buckinghamshire.gov.uk/village-connect-minibuses) for more details.
- For bus times and days of operation please contact Traveline on [www.traveline.info](https://www.traveline.info) or call: 0871 200 22 33
- Direct trains operate to this destination from station.
- Change trains at Princes Risborough for a connecting train service to Haddenham & Thame Station.
- Change here for connecting National Rail services.
- Change here for London Underground trains.
- \* Bus routes 6B, 66 & 502 run services on Sundays, only.
- \*\* Bus routes 10, 501 & X60 run evening services on Mondays to Saturdays, and all day services on Sundays.
- # Bus routes 1E, 2E, 4E, 7B & 14E run evening services, only.
- ~ Bus routes 4A, 6A, 9, 60A & X14 run services on Mondays to Fridays, only.

### Taxis

Aylesbury Station is served by a taxi rank or cab office. Check availability before travelling, and pre-book if necessary. Please consider using the following local operators: (Inclusion of this number doesn't represent any endorsement of the taxi firm)

**Falcon Taxis**  
01296 247 247

**Jet Taxis**  
01296 421 212

**Cabs4U**  
01296 200 200

### Further information about all onward travel

#### Local Cycle Info

[buckinghamshire.gov.uk](https://www.buckinghamshire.gov.uk)  
For more information about cycle routes.

#### National Cycle Info

[walkwheelcycletrust.org.uk](https://www.walkwheelcycletrust.org.uk)

#### Bus Times

See timetable displays at bus stops.  
[www.traveline.info](https://www.traveline.info)  
0871 200 22 33  
public transport info  
plus your phone company's access charge



#### PlusBus

[plusbus.info](https://www.plusbus.info)

PlusBus is a discount price 'bus pass' that you buy with your train ticket. It gives you unlimited bus travel around your chosen town, on participating buses. Visit [plusbus.info](https://www.plusbus.info)



### National Rail Enquiries

#### Online

[nationalrail.co.uk](https://nationalrail.co.uk)

#### NRE App

Free National Rail Enquiries app for iOS and Android

#### Social Media

facebook.com/nationalrailenq  
@nationalrailenq

#### Alert Me

[nationalrail.co.uk/alertme](https://nationalrail.co.uk/alertme)  
You can sign up to Alert Me messages on the National Rail Enquiries website where you can receive train and platform notifications directly to your smart phone.

#### Contact Centre

03457 48 49 50  
Calls cost no more than calls to geographic numbers (01 or 02) and may be recorded.

#### PlusBike

[nationalrail.co.uk/plusbike](https://nationalrail.co.uk/plusbike)  
For more information.

