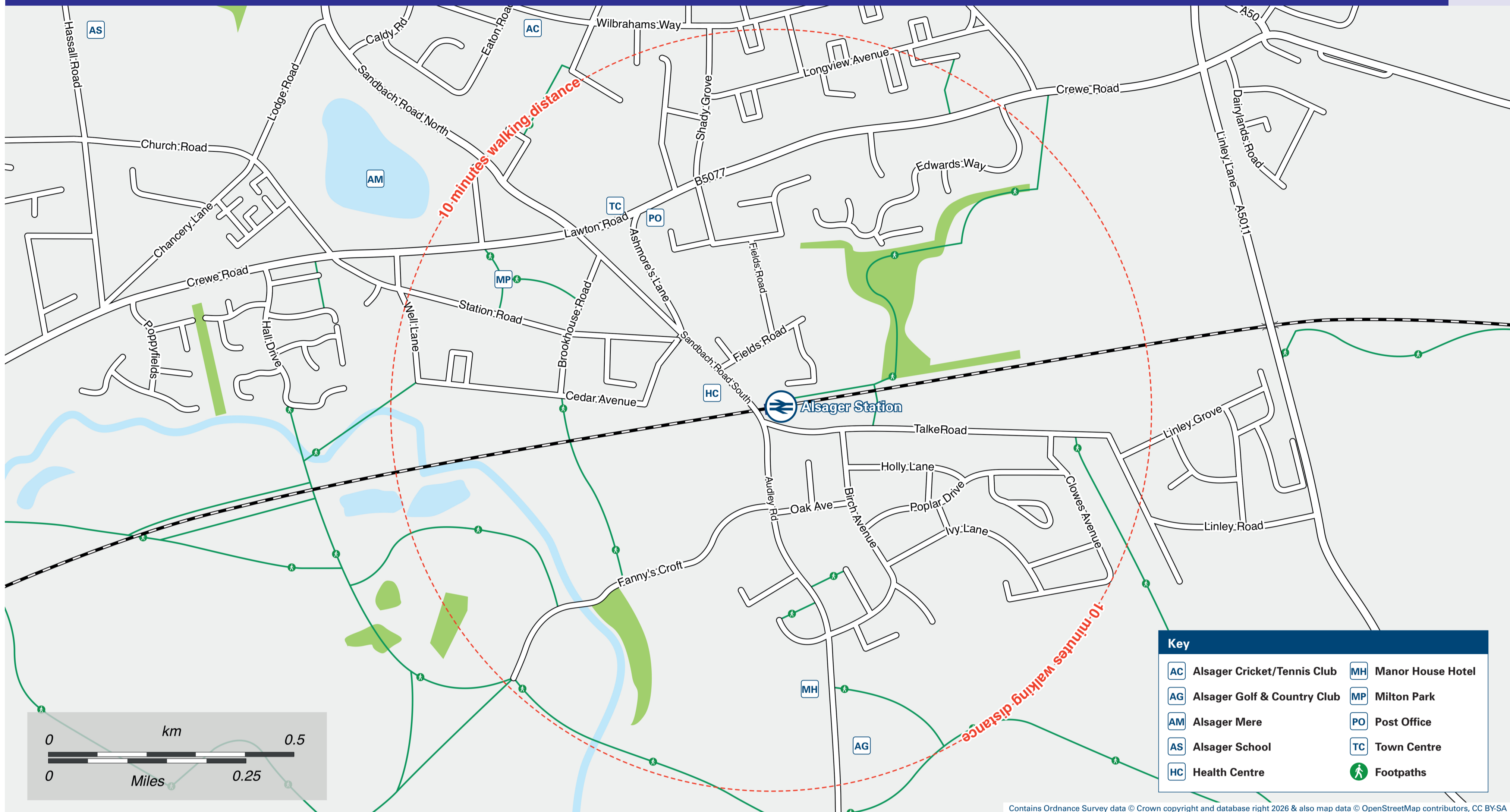




Onward Travel Information

Alsager Station

Local area map



Buses



Rail replacement buses and coaches going Northbound and Southbound will depart from outside the station entrance.

Main destinations by bus

(Data correct at April 2026)



DESTINATION	BUS ROUTES	BUS STOP
10 minutes walk from this station via Sandbach Road South, please see maps for details		
Alsager (Town Centre, Bank Corner)	317	C
Alsager (School & Leisure Centre)	317	C, B
Burslem	103	A
Church Lawton (and Lawton Gate)	103, 317	A
Crewe (Bus Station)	103	B
Crewe (Railway Station)	103	B
Hanley	103	A
Haslington	103	B
Hassall Green	317	A, D
Kidsgrove	103	A
Leighton Hospital	317	A, D
Malkin's Bank	317	A, D
Radway Green	103	B
Rode Heath	317	A, D
Sandbach (Town and Station)	317	A, D
Tunstall	103	A

NOTES

Bus route 103 operates frequent services daily.

Bus route 317 operates services on Mondays to Saturdays, only. No Sunday service.

For bus times and days of operation please contact Traveline on www.traveline.info or call: 0871 200 22 33

Direct trains operate to this destination from this station.

Taxis

Alsager station has no taxi rank or cab office. Advance booking is essential, please consider using the following local operators: (Inclusion of this number doesn't represent any endorsement of the taxi firm)

Lifestyle Private Hire
01270 872 255

Aus Private Hire
01270 879 631

Lucky Seven Taxis
(Stoke-on-Trent)
01782 333 333

Further information about all onward travel

Local Cycle Info

cheshireeast.gov.uk
For more information about cycle routes.

National Cycle Info

walkwheelcycletrust.org.uk

Bus Times

See timetable displays at bus stops.
www.traveline.info
0871 200 22 33
public transport info
please quote company's service charge



PlusBus



plusbus.info

PlusBus is a discount price 'bus pass' that you buy with your train ticket. It gives you unlimited bus travel around your chosen town, on participating buses. Visit plusbus.info

National Rail Enquiries

Online

nationalrail.co.uk

NRE App

Free National Rail Enquiries app for iOS and Android

Social Media

facebook.com/nationalrailenq
@nationalrailenq

Alert Me

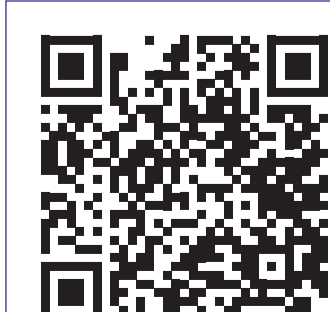
nationalrail.co.uk/alertme
You can sign up to Alert Me messages on the National Rail Enquiries website where you can receive train and platform notifications directly to your smart phone.

Contact Centre

03457 48 49 50
Calls cost no more than calls to geographic numbers (01 or 02) and may be recorded.

PlusBike

nationalrail.co.uk/plusbike
For more information.



This poster shows details of popular destinations and main, frequent bus routes. Additional services may run, so please check with Traveline or see posters at local bus stops. Whilst considerable care has been taken to ensure the information contained on this poster is correct and accurate, National Rail cannot accept responsibility for any loss or inconvenience caused by any errors or omissions, or for loss, damage, injury or inconvenience relating to the cancellation, alteration, delay or diversion of a service. For any feedback, please e-mail comments@onwardtravelposters.com

Scan this code with your mobile for full station information.