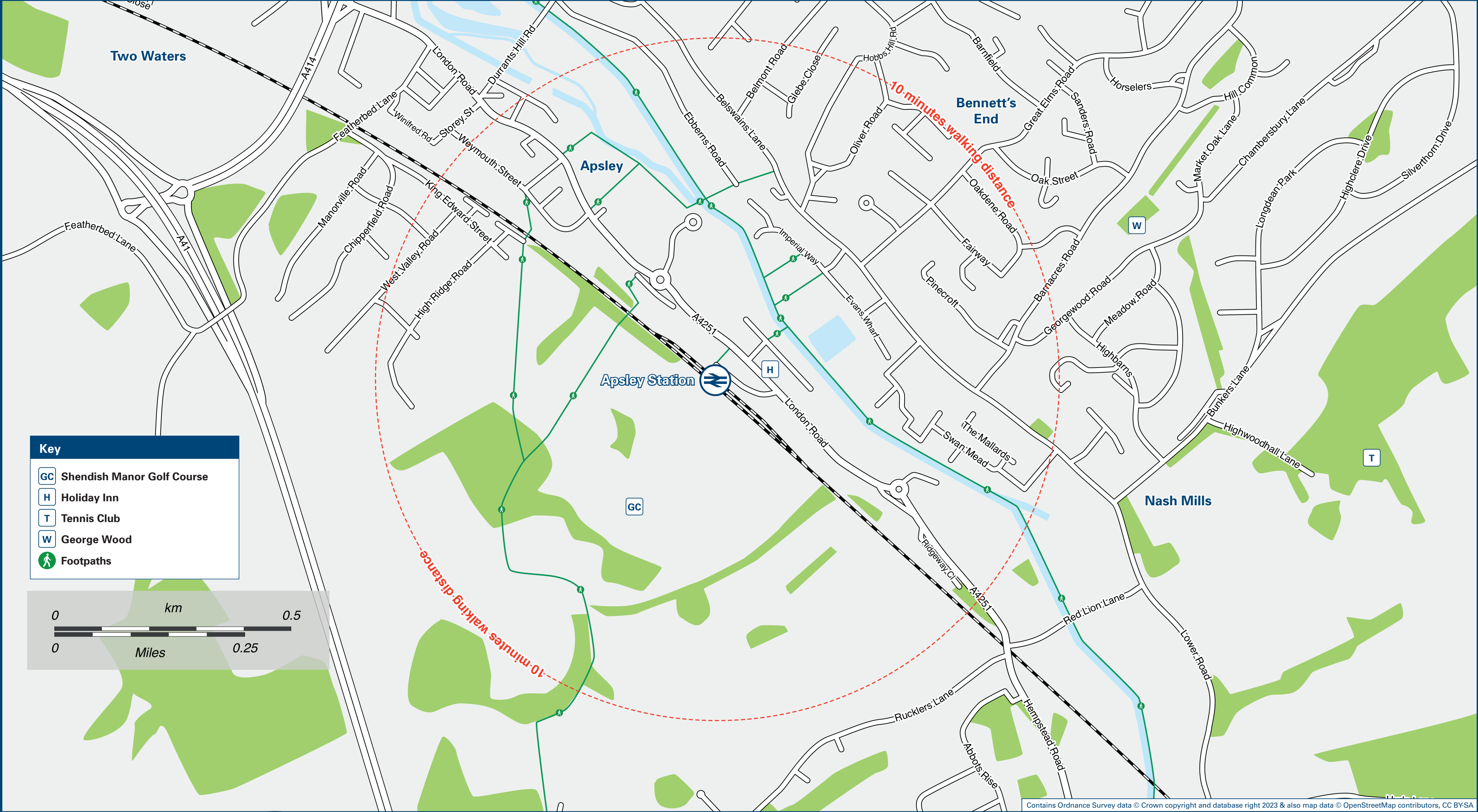




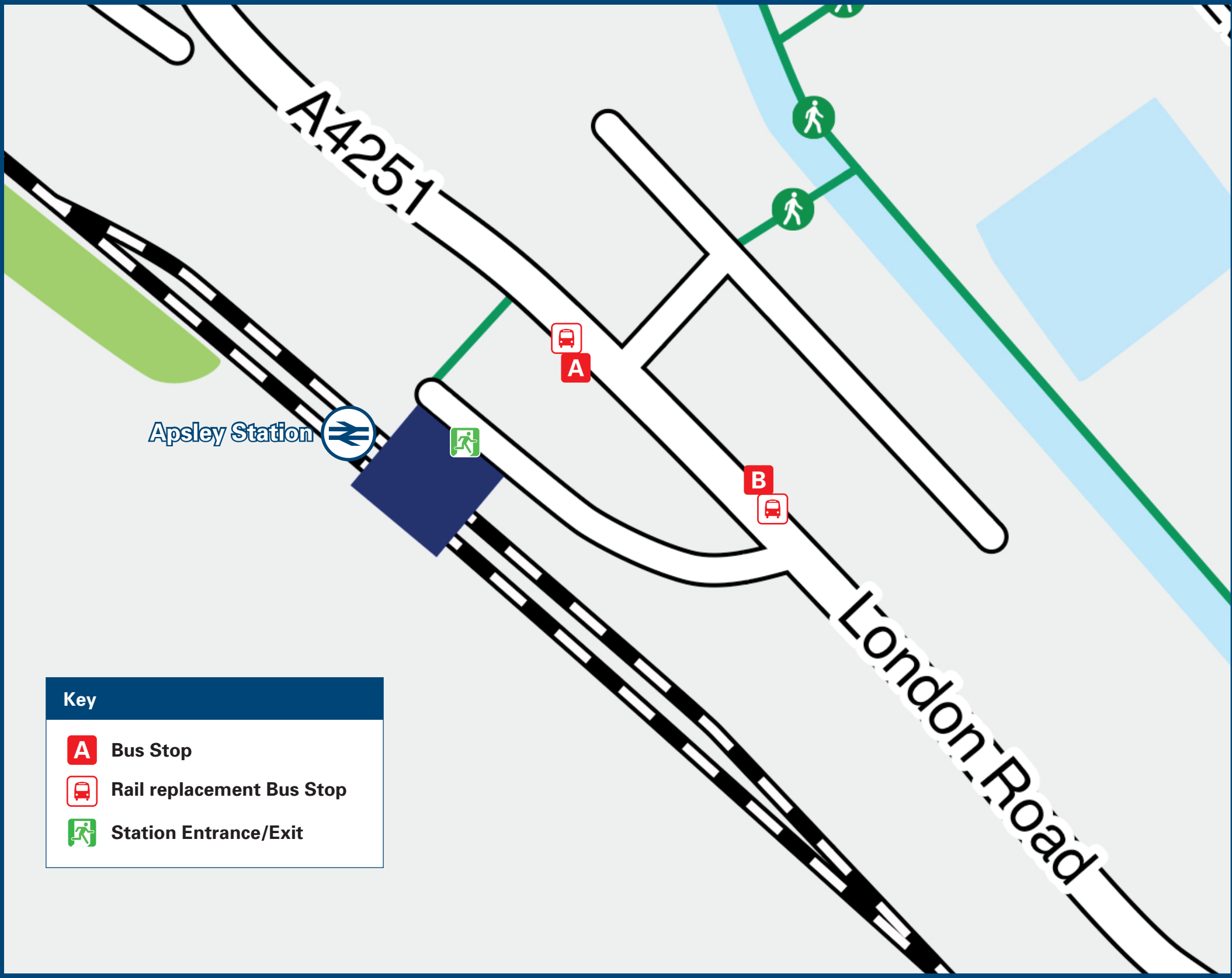
# Apsley Station

## Onward Travel Information

### Local area map



### Buses



Rail replacement buses depart from bus stops **A** and **B** on the Buses map above.

### Main destinations by bus

(Data correct at September 2023)

DESTINATION	BUS ROUTES	BUS STOP
Bushey Station	508	<b>B</b>
Carpenders Park Station	508	<b>B</b>
Hemel Hempstead Town Centre	508, H19+	<b>A</b>
Hunton Bridge	508	<b>B</b>
Kings Langley	508, H19++	<b>B</b>
Mount Vernon Hospital	508	<b>B</b>
Northwood Station	508	<b>B</b>
South Oxhey (Brampton Road)	508	<b>B</b>
South Oxhey (United Reformed Church)	508	<b>B</b>
Two Waters	508, H19+	<b>A</b>
Watford High Street Station	508	<b>B</b>
Watford Junction Station	508	<b>B</b>
Watford Town Centre	508	<b>B</b>

#### Notes

Bus route 508 operates daily.  
For more information: contact Arriva Buses (for bus route 508) [www.arrivabus.co.uk/help/contact-us](http://www.arrivabus.co.uk/help/contact-us) or call 0344 800 44 11 or Red Eagle Buses (for bus route H19) [www.redeagle.org.uk](http://www.redeagle.org.uk) or call 01296 747 926 or contact Traveline on 0871 200 22 33.

- Direct trains operate to this destination from this station
- Change here for London Overground trains.
- Change here for London Underground Metropolitan Line trains.
- + Bus route H19 runs Tuesdays and Thursdays only from stop A at 11:20 to Two Waters and Hemel Hempstead Town Centre.
- ++ Bus route H19 runs Tuesdays and Thursdays only from stop B at 13:34 to Kings Langley, also serves Bedmond High View Park and Abbots Langley.

### Taxis

Apsley Station has no taxi rank or cab office. Advance booking is essential, please consider using the following local operators: (Inclusion of this number doesn't represent any endorsement of the taxi firm)

**Cab Line**  
01442 260 560

**Hemel Taxis 247**  
01442 800 083

**Skyline taxis**  
01442 241 111

**Lynx Cars**  
01442 266 644

### Further information about all onward travel

#### Local Cycle Info

[dacorum.gov.uk](http://dacorum.gov.uk)

For more information about cycle routes.

#### National Cycle Info

[sustrans.org.uk](http://sustrans.org.uk)

Sustrans is the UK's leading sustainable transport charity.

#### Bus Times

See timetable displays at bus stops.

[www.traveline.info](http://www.traveline.info)  
0871 200 22 33  
calls cost 15p per minute  
plus your phone company's access charge

#### NextBuses

**Find the bus times for your stop.**

Search for a bus stop by entering a postcode, street & town or a stop name & town.

#### PlusBus

[plusbus.info](http://plusbus.info)

A discount price 'bus pass' that you buy with your train ticket. It gives you unlimited bus travel around your chosen town, on participating buses.

### National Rail Enquiries

#### Online

[nationalrail.co.uk](http://nationalrail.co.uk)

#### NRE App

Free National Rail Enquiries app for iOS and Android

#### Social Media

[facebook.com/nationalrailenq](https://facebook.com/nationalrailenq)  
 @nationalrailenq

#### Alert Me

You can sign up to Alert Me messages on the National Rail Enquiries website where you can receive train and platform notifications directly to your smart phone.  
[nationalrail.co.uk/alertme](http://nationalrail.co.uk/alertme)

#### Contact Centre

03457 48 49 50

Calls cost no more than calls to geographic numbers (01 or 02) and may be recorded.

#### PlusBike

[nationalrail.co.uk/plusbike](http://nationalrail.co.uk/plusbike)

For more information.



**National Rail**  
Britain's train companies working together



This poster shows details of popular destinations and main, frequent bus routes. Additional services may run, so please check with Traveline or see posters at local bus stops. Whilst considerable care has been taken to ensure the information contained on this poster is correct and accurate, National Rail cannot accept responsibility for any loss or inconvenience caused by any errors or omissions, or for loss, damage, injury or inconvenience relating to the cancellation, alteration, delay or diversion of a service. For any feedback, please e-mail [comments@onwardtravelposters.com](mailto:comments@onwardtravelposters.com)

Scan this code with your mobile for full station information.