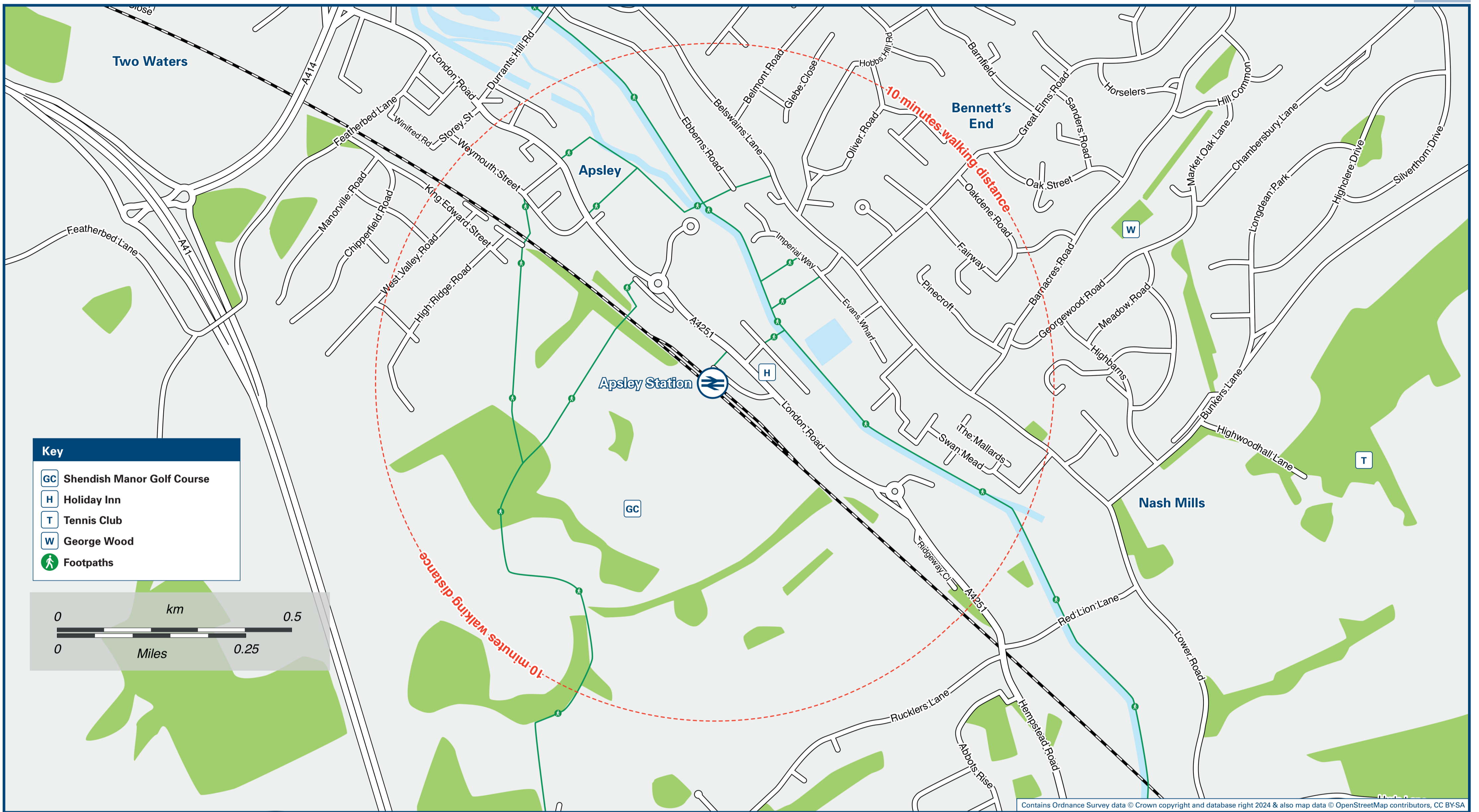




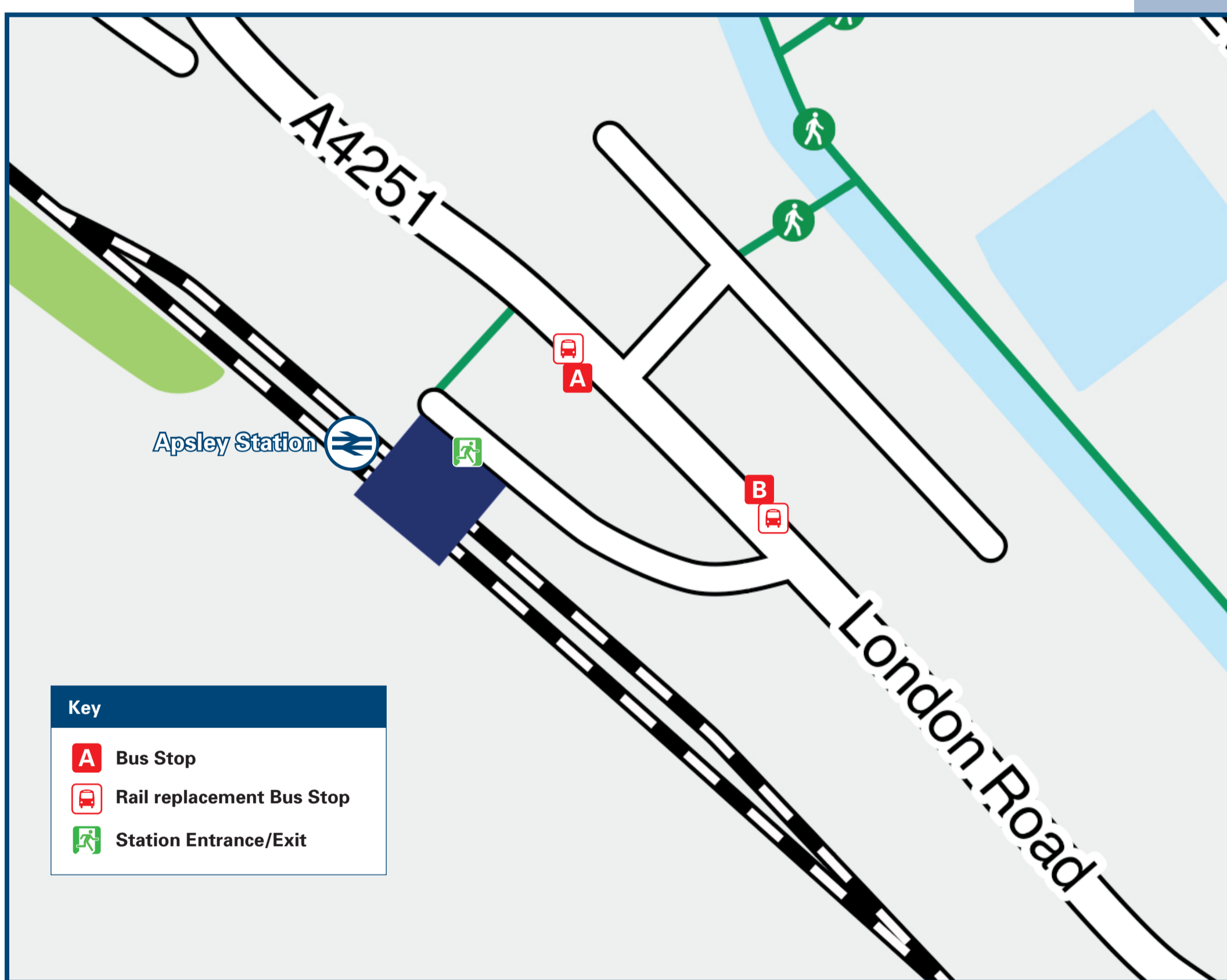
# Apsley Station

# Onward Travel Information

## Local area map



## Buses



Rail replacement buses depart from bus stops on the A4251 London Road, near to Station Drive (bus stops **A** and **B** on the Buses map).

## Main destinations by bus

(Data correct at July 2024)

DESTINATION	BUS ROUTES	BUS STOP
Abbots Langley	H19++	<b>B</b>
Bedmond	H19++	<b>B</b>
Croxley Green	322	<b>B</b>
Hemel Hempstead Town Centre	322, H19+	<b>A</b>
Hunton Bridge	322	<b>B</b>
Kings Langley	322, H19++	<b>B</b>
Maple Cross (Downings Wood Terminus)	322	<b>B</b>
North Watford (Hempstead Road)	322	<b>B</b>
Rickmansworth (Berry Lane Estate)	322	<b>B</b>
Rickmansworth Station	322	<b>B</b>
Two Waters	322, H19+	<b>A</b>
Watford General Hospital	322	<b>B</b>
Watford Junction Station	322	<b>B</b>
Watford Town Centre (Market Street)	322	<b>B</b>

**Notes**

- Bus route 322 runs a frequent daily service.
- For more information: contact Arriva (for bus route 322) [www.arrivabus.co.uk/help/contact-us](http://www.arrivabus.co.uk/help/contact-us) or call 0344 800 44 11 or Red Eagle Buses (for bus route H19) [www.redeagle.org.uk](http://www.redeagle.org.uk) or call 01296 747 926 or contact Traveline on 0871 200 22 33.
- Direct trains operate to this destination from this station.
- Change here for other National Rail trains.
- Change here for London Underground trains.
- Bus route H19 runs Tuesdays and Thursdays only from stop (A) at 11:20 to Hemel Hempstead Town Centre.
- Bus route H19 runs Tuesdays and Thursdays only from stop (B) at 13:34 to Kings Langley.

## Taxis

Apsley Station has no taxi rank or cab office. Advance booking is essential, please consider using the following local operators: (Inclusion of this number doesn't represent any endorsement of the taxi firm)

**Cab Line**  
01442 260 560

**Hemel Taxis 247**  
01442 800 083

**Skyline Taxis**  
01442 241 111

## Further information about all onward travel

<b>Local Cycle Info</b> <a href="http://dacorum.gov.uk">dacorum.gov.uk</a> For more information about cycle routes.	<b>National Cycle Info</b> <a href="http://sustrans.org.uk">sustrans.org.uk</a> Sustrans is the UK's leading sustainable transport charity.	<b>Bus Times</b> See timetable displays at bus stops. <a href="http://www.traveline.info">www.traveline.info</a> 0871 200 22 33 call cost 13p per minute plus your phone company's access charge	<b>NextBuses</b> <b>Find the bus times for your stop.</b> Search for a bus stop by entering a postcode, street & town or a stop name & town.	<b>PlusBus</b> <a href="http://plusbus.info">plusbus.info</a> A discount price 'bus pass' that you buy with your train ticket. It gives you unlimited bus travel around your chosen town, on participating buses.
---	---	--	--	---

## National Rail Enquiries

<b>Online</b> <a href="http://nationalrail.co.uk">nationalrail.co.uk</a>	<b>NRE App</b> Free National Rail Enquiries app for iOS and Android	<b>Social Media</b> facebook.com/nationalrailenq @nationalrailenq	<b>Alert Me</b> You can sign up to Alert Me messages on the National Rail Enquiries website where you can receive train and platform notifications directly to your smart phone. <a href="http://nationalrail.co.uk/alertme">nationalrail.co.uk/alertme</a>	<b>Contact Centre</b> 03457 48 49 50 Calls cost no more than calls to geographic numbers (01 or 02) and may be recorded.	<b>PlusBike</b> <a href="http://nationalrail.co.uk/plusbike">nationalrail.co.uk/plusbike</a> For more information.
---	--	---	---	--	--



This poster shows details of popular destinations and main, frequent bus routes. Additional services may run, so please check with Traveline or see posters at local bus stops. Whilst considerable care has been taken to ensure the information contained on this poster is correct and accurate, National Rail cannot accept responsibility for any loss or inconvenience caused by any errors or omissions, or for loss, damage, injury or inconvenience relating to the cancellation, alteration, delay or diversion of a service. For any feedback, please e-mail [comments@onwardtravelposters.com](mailto:comments@onwardtravelposters.com)

Scan this code with your mobile for full station information.