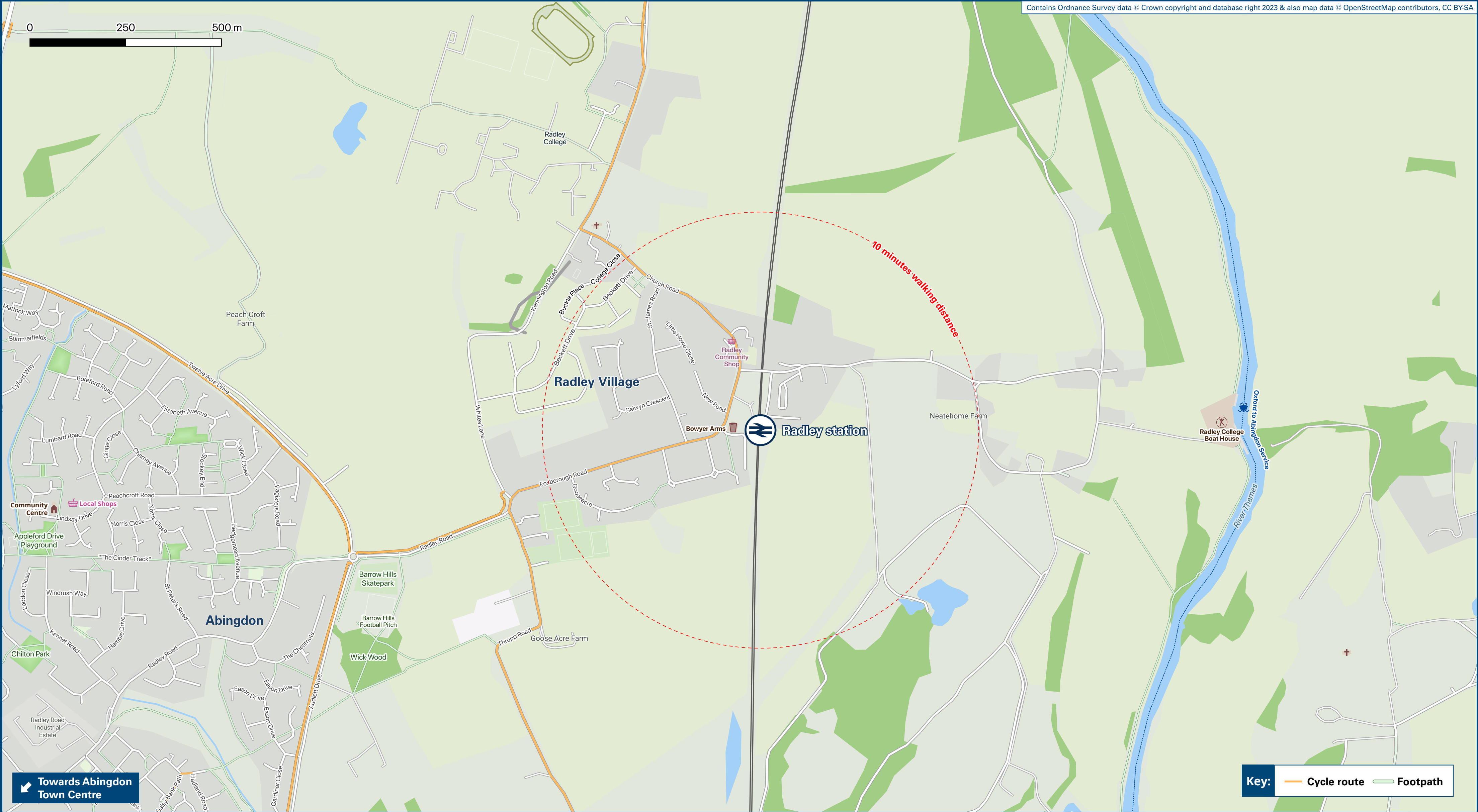




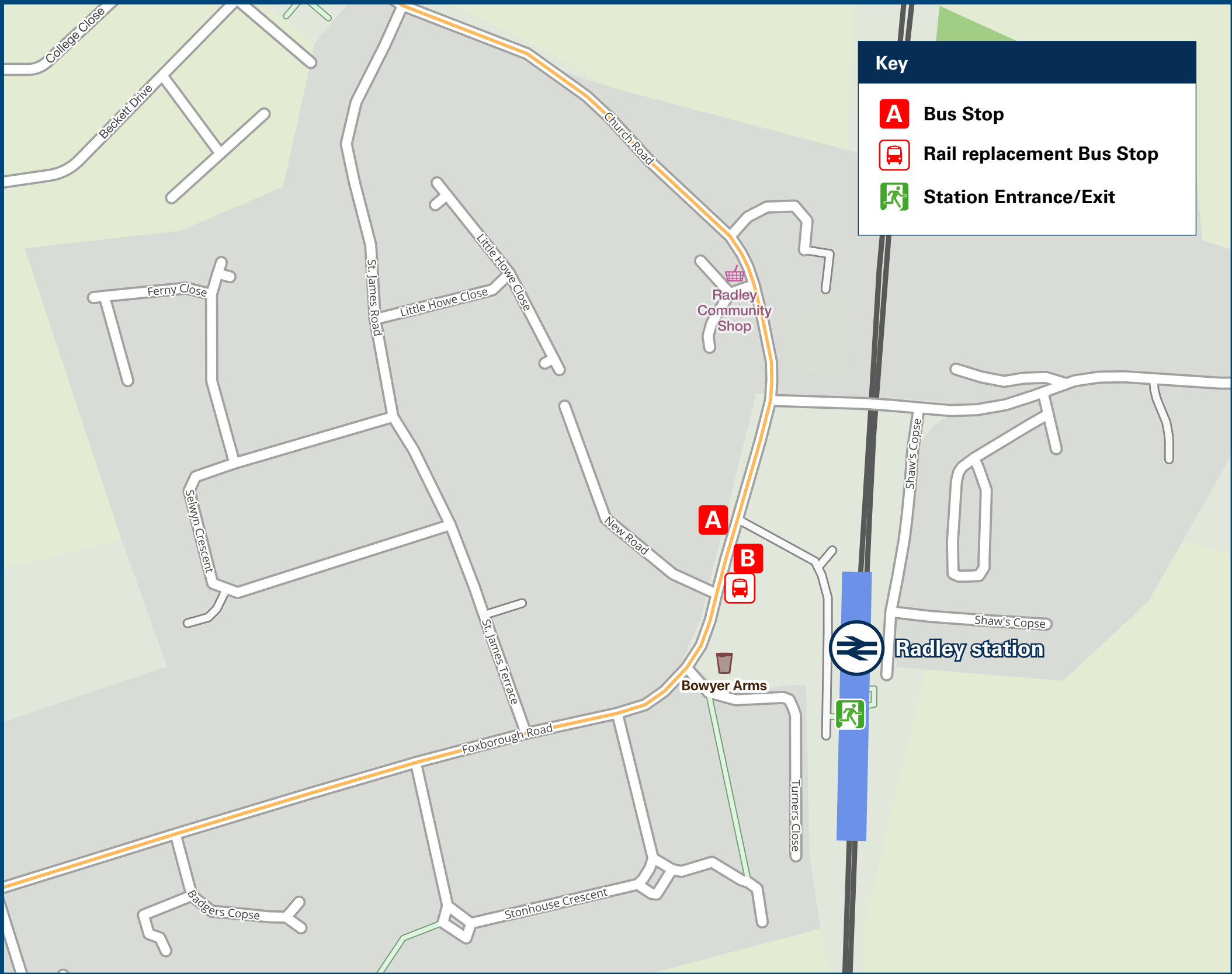
Radley Station

Onward Travel Information

Local area map



Buses



Rail replacement buses/coaches depart from bus stop **B** at the station entrance, near The Bowyer Arms Public House.

Main destinations by bus

(Data correct at November 2023)

DESTINATION	BUS ROUTES	BUS STOP
Abingdon (Radley Road)	35	B
Abingdon (Town Centre)	35	B
Kennington	35	A
Oxford (Abingdon Road)	35	A
Oxford City Centre (Westgate Shopping Centre)	35	A
Pebble Hill Mobile Park	35	A
10 minutes walk from this Station		
Radley College	35	A
Sugworth Lane	35	A
The Lawns	35	A

Notes

Bus route 35 operates daily.
For bus times and the latest bus service information, please see the real-time departure screens at bus stops **A** and **B**, or consult the printed timetables at the bus stops. Or contact the bus operator (see below):
Oxford Bus Company (for bus route 35) www.oxfordbus.co.uk or call 01865 785 400.
 Direct trains operate from this station to Oxford.

Taxis

Radley station has no taxi rank or cab office. Advance booking is essential, please consider using the following local operators: (Inclusion of this number doesn't represent any endorsement of the taxi firm)

Su's Taxis Abingdon
01235 554 085

Oxford Eco Cars Abingdon
01865 989 898

Go Green Taxis
01235 811 100

Further information about all onward travel

Local Cycle Info	National Cycle Info	Bus Times	NextBuses	PlusBus
oxfordshire.gov.uk For more information about cycle routes (search for Abingdon area LCWIP for details).	sustrans.org.uk Sustrans is the UK's leading sustainable transport charity.	See timetable displays at bus stops. www.traveline.info 0871 200 22 33 calls cost 10p per minute plus your phone company's access charge	Find the bus times for your stop. Search for a bus stop by entering a postcode, street & town or a stop name & town.	plusbus.info A discount price 'bus pass' that you buy with your train ticket. It gives you unlimited bus travel around your chosen town, on participating buses.

National Rail Enquiries

Online	NRE App	Social Media	Alert Me	Contact Centre	PlusBike
nationalrail.co.uk	Free National Rail Enquiries app for iOS and Android	facebook.com/nationalrailenq @nationalrailenq	You can sign up to Alert Me messages on the National Rail Enquiries website where you can receive train and platform notifications directly to your smart phone. nationalrail.co.uk/alertme	03457 48 49 50 Calls cost no more than calls to geographic numbers (01 or 02) and may be recorded.	nationalrail.co.uk/plusbike For more information.



This poster shows details of popular destinations and main, frequent bus routes. Additional services may run, so please check with Traveline or see posters at local bus stops. Whilst considerable care has been taken to ensure the information contained on this poster is correct and accurate, National Rail cannot accept responsibility for any loss or inconvenience caused by any errors or omissions, or for loss, damage, injury or inconvenience relating to the cancellation, alteration, delay or diversion of a service. For any feedback, please e-mail comments@onwardtravelposters.com

Scan this code with your mobile for full station information.