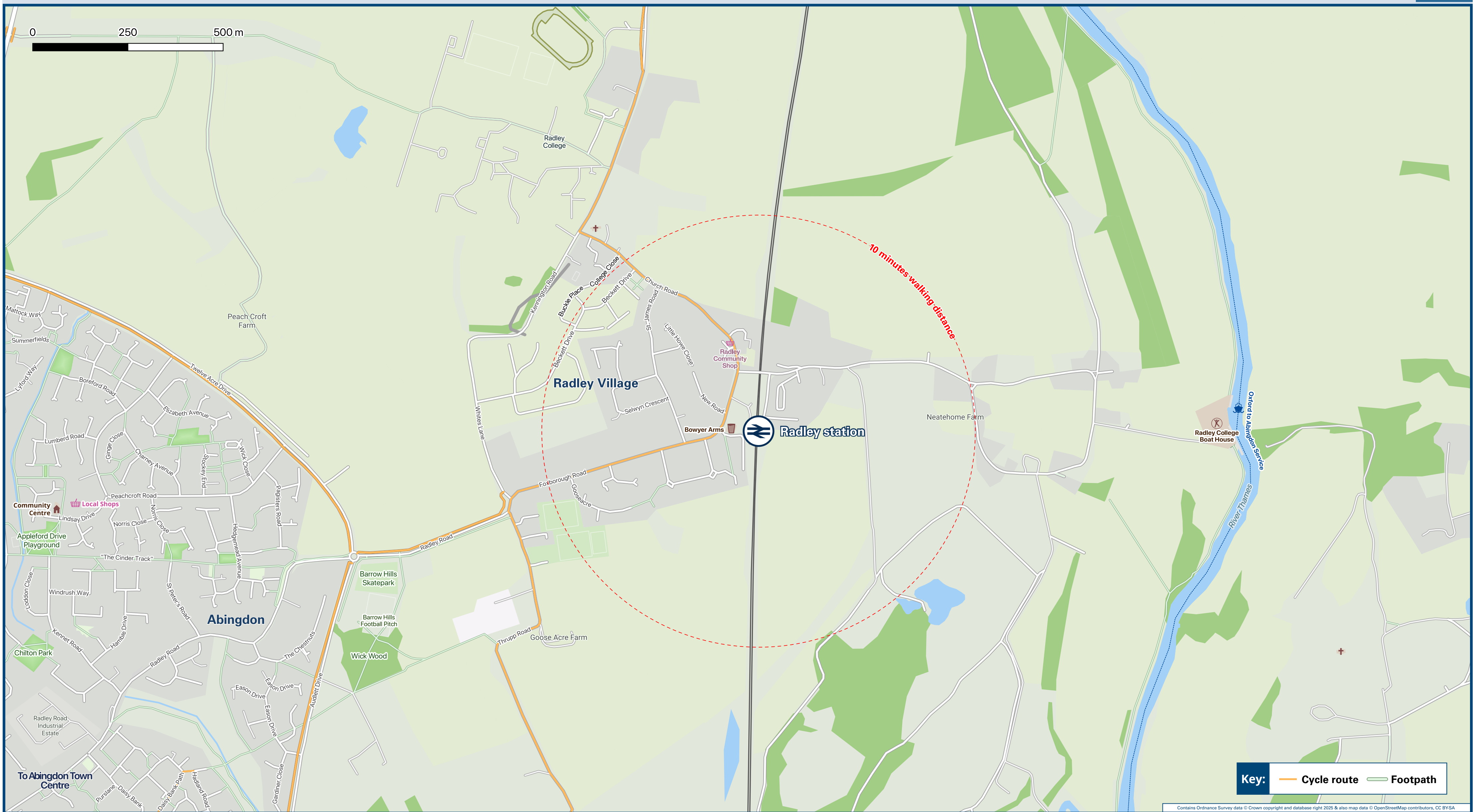




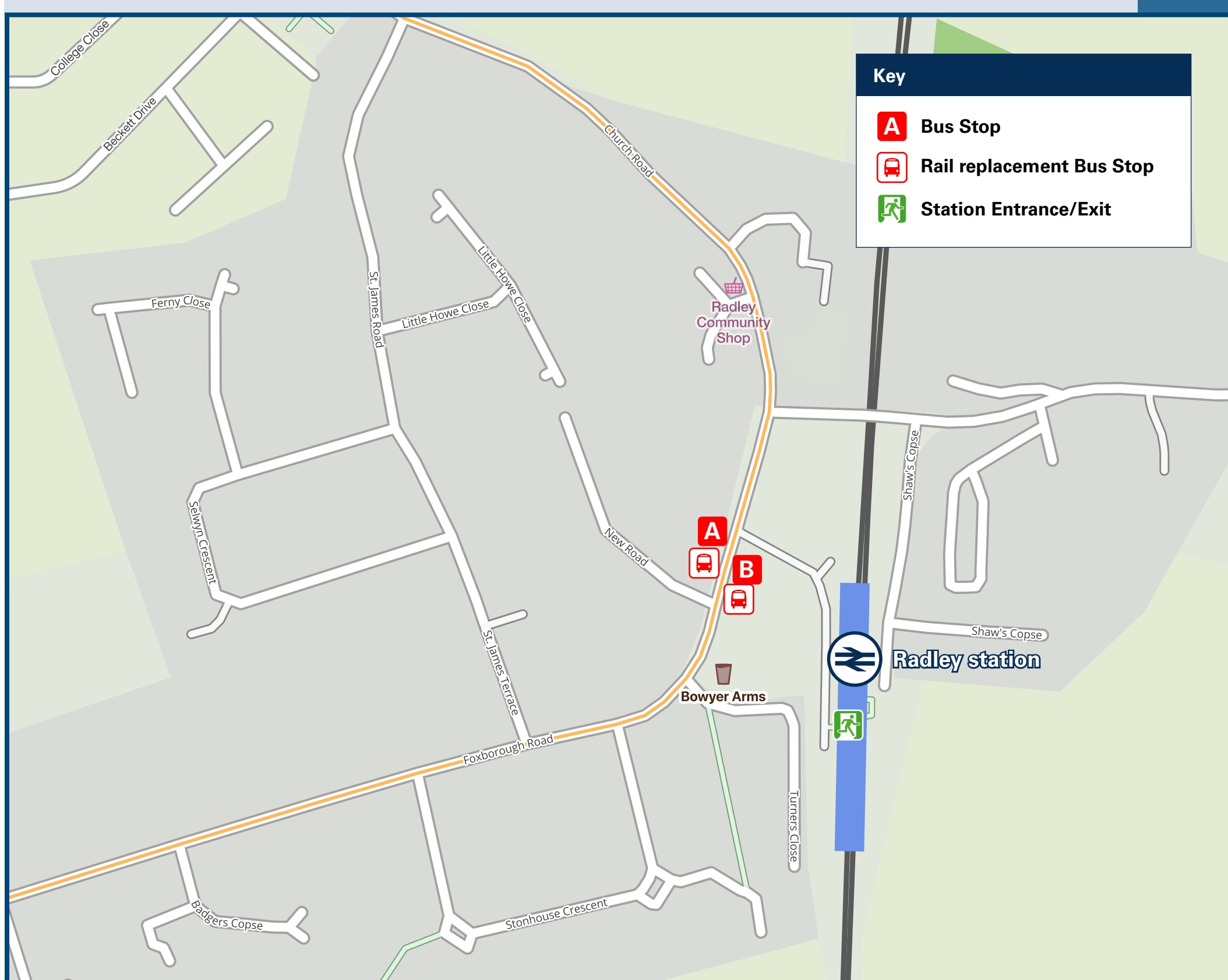
Radley Station

Onward Travel Information

Local area map



Buses



Rail replacement buses/coaches depart from the bus stops on Foxborough Road outside the Station entrance (near Bowyer Arms). Towards Didcot - bus stop outside the station entrance; Towards Oxford - bus stop opposite the station entrance.

Main destinations by bus

(Data correct at January 2026)

DESTINATION	BUS ROUTES	BUS STOP
Abingdon (Radley Road)	35	B
Abingdon (Town Centre)	35	B
Kennington	35	A
Oxford (Abingdon Road)	35	A
Oxford City Centre (Westgate Shopping Centre)	35	A
Pebble Hill Mobile Park	35	A
Radley College	10 minutes walk from this Station	A
Sugworth Lane	35	A
The Lawns	35	A

Notes

Bus route 35 operates a daily service. For bus times and the latest bus service information, please see the real-time departure screens at bus stops A and B, or consult the printed timetables at the bus stops. Or contact Traveline (as below). For bus times and days of operation please contact Traveline on www.traveline.info or call: 0871 200 22 33

Taxis

Radley station has no taxi rank or cab office. Advance booking is essential, please consider using the following local operators: (Inclusion of this number doesn't represent any endorsement of the taxi firm)

Su's Taxis (Abingdon)
01235 554 085

Oxford Eco Cars (Abingdon)
01865 989 898

Go Green Taxis (Didcot)
01235 811 100

Further information about all onward travel

Local Cycle Info oxfordshire.gov.uk For more information about cycle routes.	National Cycle Info walkwheelcycletrust.org.uk	Bus Times See timetable displays at bus stops. www.traveline.info 0871 200 22 33 calls cost 10p per minute plus your phone company's access charge	NextBuses .mobi Find the bus times for your stop. Search for a bus stop by entering a postcode, street & town or a stop name & town.	PlusBus plusbus.info A discount price "bus pass" that you buy with your train ticket. It gives you unlimited bus travel around your chosen town, on participating buses.
---	--	---	---	---

National Rail Enquiries

Online nationalrail.co.uk	NRE App Free National Rail Enquiries app for iOS and Android	Social Media facebook.com/nationalrailenq @nationalrailenq	Alert Me You can sign up to Alert Me messages on the National Rail Enquiries website where you can receive train and platform notifications directly to your smart phone. nationalrail.co.uk/alertme	Contact Centre 03457 48 49 50 Calls cost no more than calls to geographic numbers (01 or 02) and may be recorded.	PlusBike nationalrail.co.uk/plusbike For more information.
---	--	---	---	--	--



This poster shows details of popular destinations and main, frequent bus routes. Additional services may run, so please check with Traveline or see posters at local bus stops. Whilst considerable care has been taken to ensure the information contained on this poster is correct and accurate, National Rail cannot accept responsibility for any loss or inconvenience caused by any errors or omissions, or for loss, damage, injury or inconvenience relating to the cancellation, alteration, delay or diversion of a service. For any feedback, please e-mail comments@onwardtravelposters.com

Scan this code with your mobile for full station information.