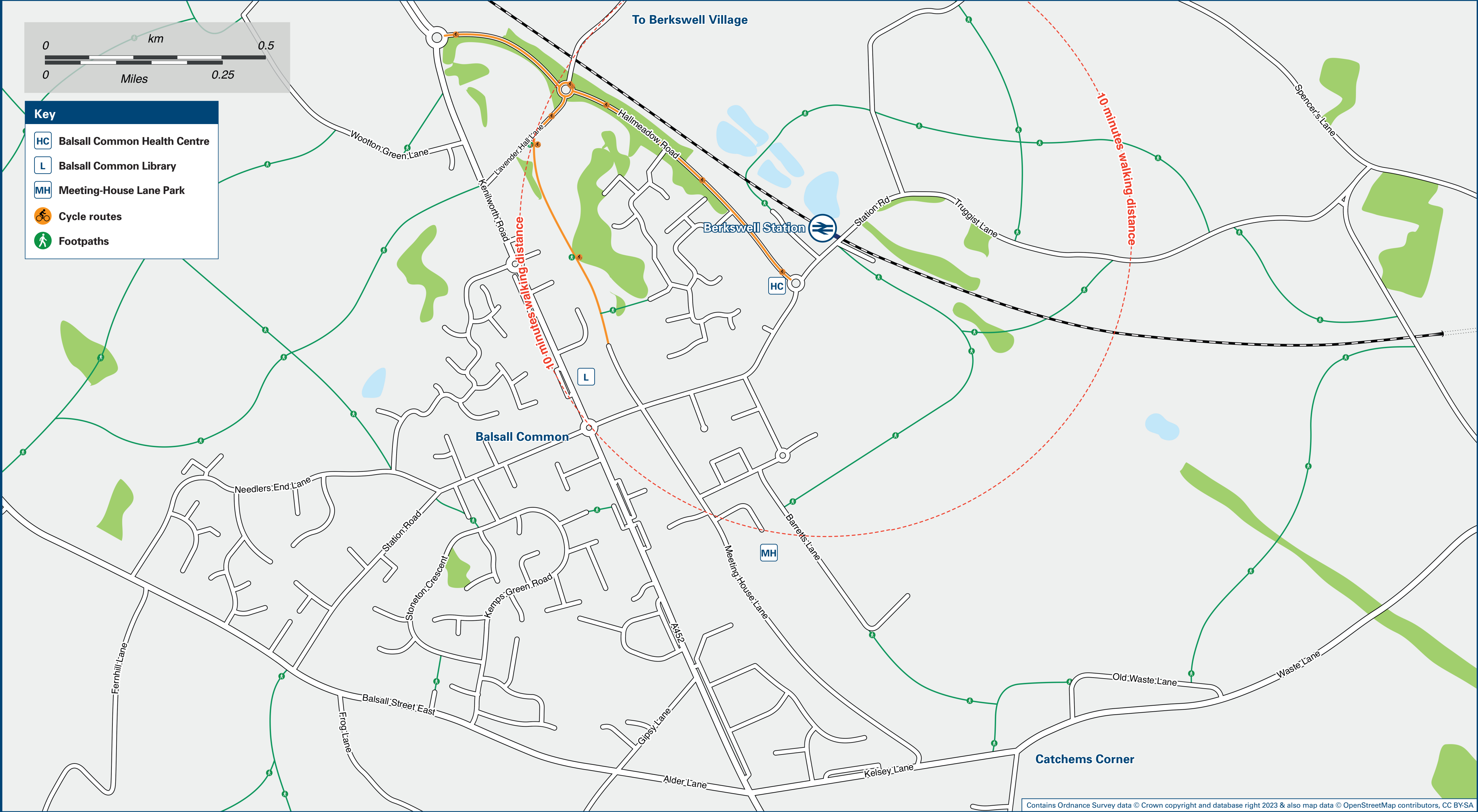




Berkswell Station

Onward Travel Information

Local area map



Buses



Rail replacement buses towards Birmingham and Coventry will use the bus stop on the roundabout of Station Road/Hallmeadow Road (see map)

Main destinations by bus

(Data correct at August 2023)

DESTINATION	BUS ROUTES	BUS STOP
Balsall Common	(a 10 minute walk from this Station - please see Local Area Map)	
Burton Green	87	B
Cannon Park	87	B
Carol Green	87	B
Copt Heath	87, 88	A, C
Coventry	87	B
Kirby Corner (for the University of Warwick)	87	B
Knowle	87, 88	A, C
Needlers End	87, 88	A, C
Solihull	87, 88	A, C
Tile Hill	87	B
War Memorial Park	87	B
Westwood Heath	87	B

Notes

Bus routes 87 & 88 run Mondays to Saturdays, only. No Sunday services.
 Direct trains operate to this destination from this station.

Taxis

Berkswell Station has no taxi rank or cab office. Advance booking is essential, please consider using the following local operators: (Inclusion of this number doesn't represent any endorsement of the taxi firm)

CV Cars
01675 446 161

BTS Ltd
07944 700 877

BCM Cars
01675 443 333

Further information about all onward travel

Local Cycle Info

www.tfwm.org.uk/plan-your-journey/ways-to-travel/cycling-and-walking
For more information about cycle routes.

National Cycle Info

sustrans.org.uk

Sustrans is the UK's leading sustainable transport charity.

Bus Times

See timetable displays at bus stops.

www.traveline.info
0871 200 22 33
calls cost 15p per minute plus your phone company's access charge

NextBuses

Find the bus times for your stop.
Search for a bus stop by entering a postcode, street & town or a stop name & town.

PlusBus

plusbus.info

A discount price 'bus pass' that you buy with your train ticket. It gives you unlimited bus travel around your chosen town, on participating buses.

National Rail Enquiries

Online

nationalrail.co.uk

NRE App

Free National Rail Enquiries app for iOS and Android

Social Media

facebook.com/nationalrailenq
 @nationalrailenq

Alert Me

You can sign up to Alert Me messages on the National Rail Enquiries website where you can receive train and platform notifications directly to your smart phone.
nationalrail.co.uk/alertme

Contact Centre

03457 48 49 50
Calls cost no more than calls to geographic numbers (01 or 02) and may be recorded.

PlusBike

nationalrail.co.uk/plusbike
For more information.



National Rail
Britain's train companies working together

