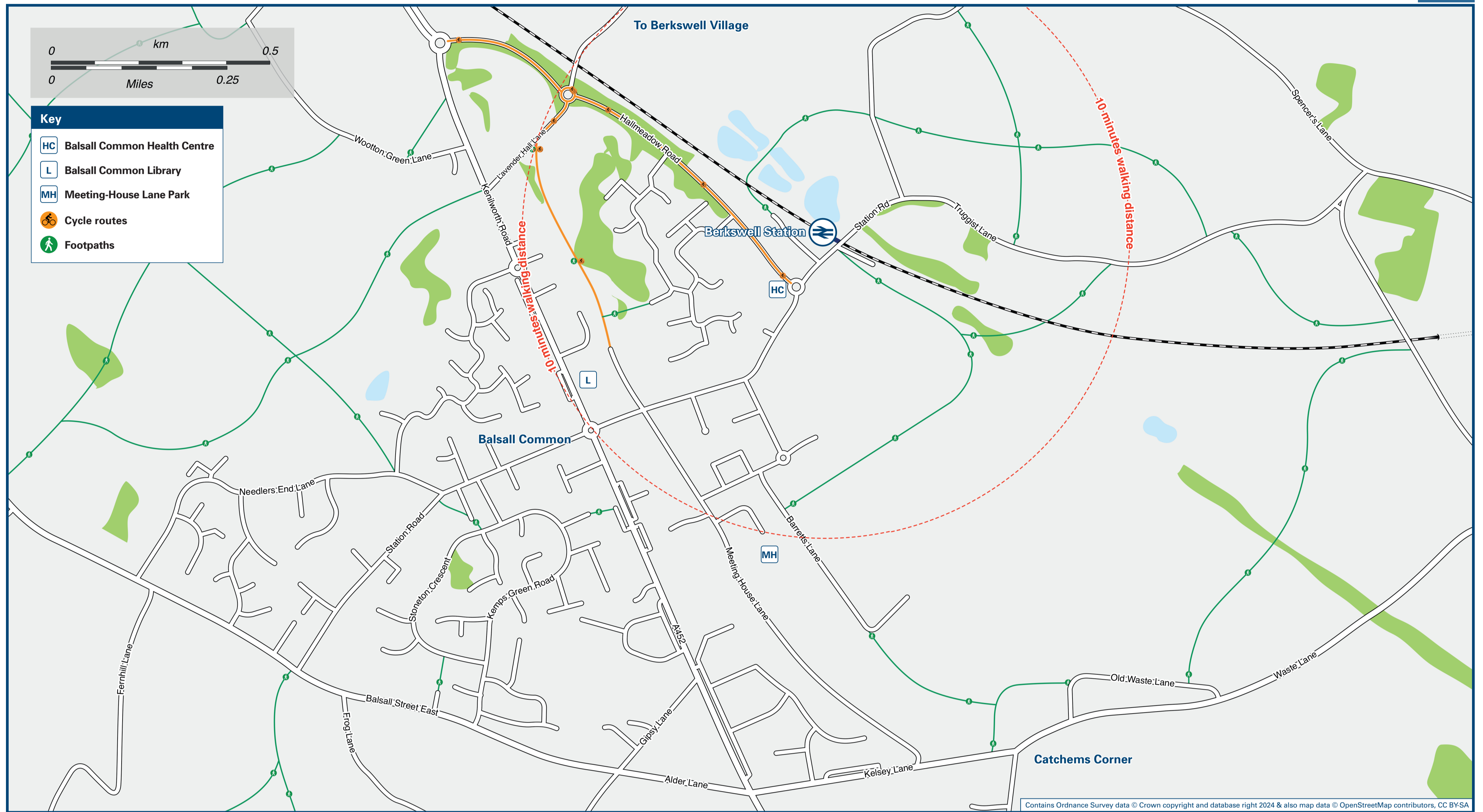




Berkswell Station

Onward Travel Information

Local area map



Buses



Rail replacement buses towards Birmingham and Coventry will use the bus stop on the roundabout of Station Road/Hallmeadow Road (see map)

Main destinations by bus

(Data correct at July 2024)

DESTINATION	BUS ROUTES	BUS STOP
Balsall Common	(a 10 minute walk from this Station - please see Local Area Map)	
Burton Green	87	B
Cannon Park	87	B
Carol Green	87	B
Copt Heath	87, 88	A
Coventry	88	C
Kirby Corner (for the University of Warwick)	87	B
Knowle	87, 88	A
Needlers End	88	C
Solihull	87, 88	A
Tile Hill	88	C
War Memorial Park	87	B
Westwood Heath	87	B

Notes

Bus routes 87 & 88 run Mondays to Saturdays, only. No Sunday services.
Direct trains operate to this destination from this station.

Taxis

Berkswell Station has no taxi rank or cab office. Advance booking is essential, please consider using the following local operators: (Inclusion of this number doesn't represent any endorsement of the taxi firm)

CV Cars
01675 446 161

Yellow Taxis Coventry
024 7610 0100

BTS
07944 700 877

Further information about all onward travel

Local Cycle Info www.tfwm.org.uk/plan-your-journey/ways-to-travel/cycling-and-walking For more information about cycle routes.	National Cycle Info sustrans.org.uk Sustrans is the UK's leading sustainable transport charity.	Bus Times See timetable displays at bus stops. www.traveline.info 0871 200 22 33 plus your phone company's access charge	NextBuses Find the bus times for your stop. Search for a bus stop by entering a postcode, street & town or a stop name & town.	PlusBus plusbus.info A discount price 'bus pass' that you buy with your train ticket. It gives you unlimited bus travel around your chosen town, on participating buses.
---	---	---	--	---

National Rail Enquiries

Online nationalrail.co.uk	NRE App Free National Rail Enquiries app for iOS and Android	Social Media facebook.com/nationalrailenq @nationalrailenq	Alert Me You can sign up to Alert Me messages on the National Rail Enquiries website where you can receive train and platform notifications directly to your smart phone. nationalrail.co.uk/alertme	Contact Centre 03457 48 49 50 Calls cost no more than calls to geographic numbers (01 or 02) and may be recorded.	PlusBike nationalrail.co.uk/plusbike For more information.
---	--	---	---	--	--



This poster shows details of popular destinations and main, frequent bus routes. Additional services may run, so please check with Traveline or see posters at local bus stops. Whilst considerable care has been taken to ensure the information contained on this poster is correct and accurate, National Rail cannot accept responsibility for any loss or inconvenience caused by any errors or omissions, or for loss, damage, injury or inconvenience relating to the cancellation, alteration, delay or diversion of a service. For any feedback, please e-mail comments@onwardtravelposters.com

Scan this code with your mobile for full station information.