



Alton Station

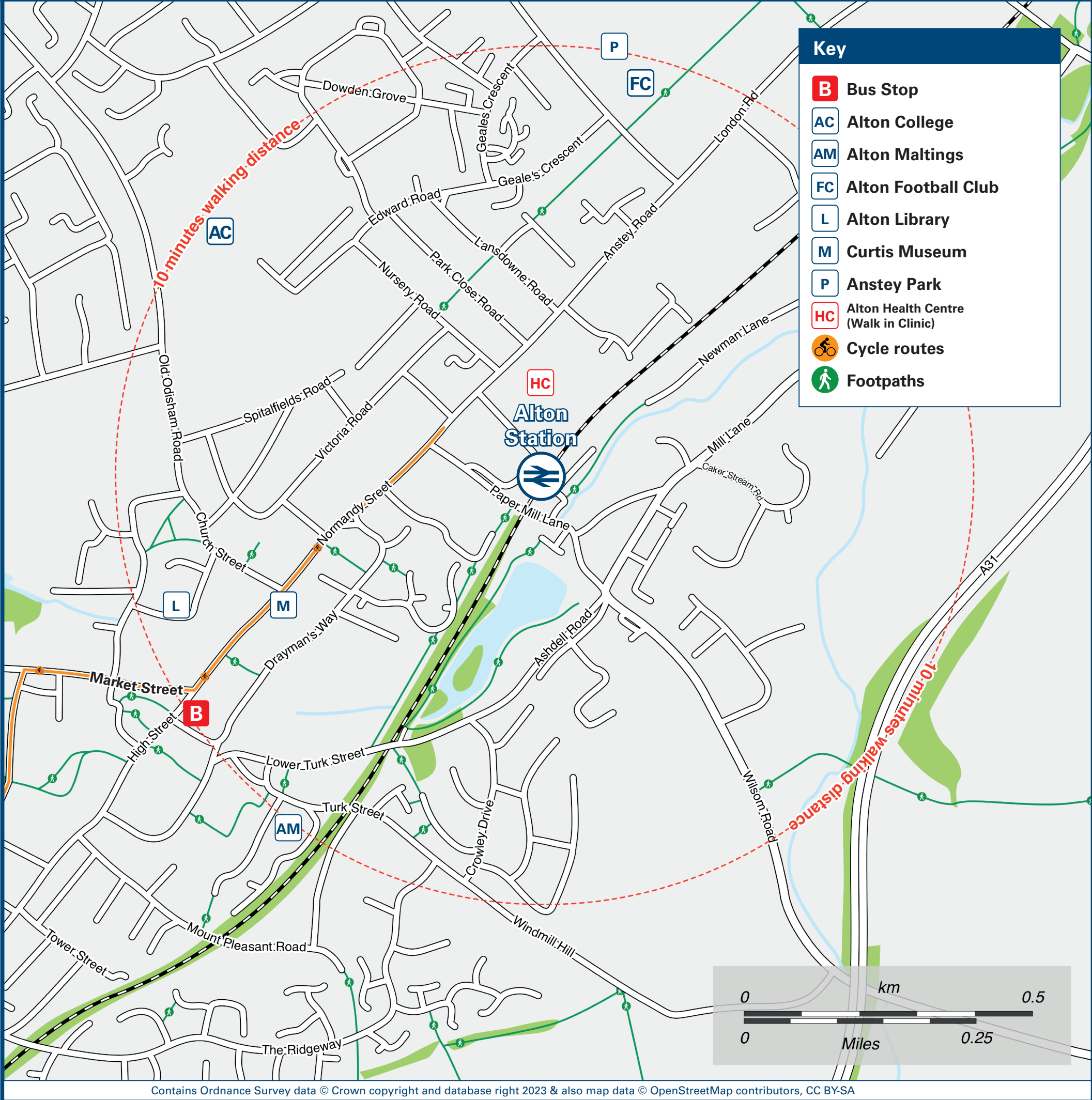
Onward Travel Information

Buses and Taxis



Rail replacement buses/coaches depart from the Station forecourt on Station Road.

Local area map



Main destinations by bus

(Data correct at December 2023)



| DESTINATION | BUS ROUTES | BUS STOP |
|--|---|----------|
| Alton (South View Rise / Greenfields Avenue) | 13 | N |
| Alton College | 13 | N |
| Alton Community Hospital (Chawton Park Road) | 38*, 64 | R |
| Alton (Manor Estate / Wooteys Way) | 9* | P |
| Alton Town Centre (High Street) | 10 minutes walk from this Station 38*, 64, 65, 206** | R |
| Basingstoke | 13 | N |
| Beech (Village Centre) | 208** | B# |
| Bentley Village | 65, 206** | R |
| Bentworth | 208** | B# |
| Binstead | 206** | R |
| Bishop's Sutton | 64 | R |
| Bordon | 13 | A, B# |
| Camelsdale | 13 | A, B# |
| Chawton (for Jane Austen's House) | 38*, 64(alight Lincoln Green) | R |
| East Worldham | 13 | A, B# |
| Empshott | 38* | R |

| DESTINATION | BUS ROUTES | BUS STOP |
|--|------------|----------|
| Farnham | 65 | R |
| Four Marks (for Watercress Line) | 64 | R |
| Greatham | 38* | R |
| Guildford | 65 | R |
| Hook | 13 | N |
| Holybourne (for Eggar's School) | 65, 206** | R |
| Kingsley | 13 | A, B# |
| Liss | 38* | R |
| Liss Forest | 38* | R |
| Lower Froyle | 206** | R |
| Manor Estate (Alton) | 9* | P |
| Medstead | 208** | B# |
| New Alresford | 64 | R |
| North Wanborough | 13 | N |
| Petersfield (serves Petersfield station) | 38* | R |
| Puttenham | 65 | R |
| RAF Odiham | 13 | N |
| Ropley Dean (for Watercress Line) | 64 | R |

| DESTINATION | BUS ROUTES | BUS STOP |
|--|------------|----------|
| Selborne (for Gilbert White's House and Gardens) | 38* | R |
| Sheet | 38* | R |
| Sleaford | 13 | A, B# |
| Upper Froyle | 206** | R |
| Whitehill | 13 | A, B# |
| Winchester | 64 | R |

Notes

Bus routes 13 and 65 operate Mondays to Saturdays only.
Bus route 64 operates daily, Mondays to Sundays.
For bus times and other bus service enquiries, please contact Traveline on 0871 200 22 323 or contact the bus operator (see below):
Stagecoach South (for bus routes 9, 13, 23, 38, 64 & 65) call 0345 241 8000 or Cresta Coaches (for bus routes 206 & 208) contact Traveline for timetable information.

Direct trains operate to this destination from this Station.
Mid Hants Railway (Watercress Line) to Four Marks, Ropley and New Alresford - Tel: 01962 733810 for all enquiries.
Bus stop (B) is located on the High Street in Alton town centre, ether walk 10 minutes (see map for walking route) or catch any bus towards the town centre from stop (R) outside this station (not Guildford bound buses).
* Bus routes 9 and 38 operate a limited service Mondays to Fridays only. Please check timetables.
+ Bus routes 206 and 208 operate a limited service on Tuesdays and Fridays only. Please check timetables.

Taxis

Alton station is served by a taxi rank or cab office. Check availability before travelling, and pre-book if necessary. Please consider using the following local operators: (Inclusion of this number doesn't represent any endorsement of the taxi firm)

Alton 8's Taxis
01420 88888

T for Taxi
01420 544 544

Wilson Taxis
01420 87777

Further information about all onward travel

| Local Cycle Info | National Cycle Info | Bus Times | NextBuses | PlusBus |
|--|---|--|---|---|
| easthants.gov.uk For more information about cycle routes. | sustrans.org.uk Sustrans is the UK's leading sustainable transport charity. | See timetable displays at bus stops. www.traveline.info 0871 200 22 33 call cost 15p per minute plus your phone company's access charge | Find the bus times for your stop. Search for a bus stop by entering a postcode, street & town or a stop name & town. | plusbus.info A discount price 'bus pass' that you buy with your train ticket. It gives you unlimited bus travel around your chosen town, on participating buses. |

National Rail Enquiries

| Online | NRE App | Social Media | Alert Me | Contact Centre | PlusBike |
|--|--|---|--|---|---|
| nationalrail.co.uk | Free National Rail Enquiries app for iOS and Android | facebook.com/nationalrailenq @nationalrailenq | You can sign up to Alert Me messages on the National Rail Enquiries website where you can receive train and platform notifications directly to your smart phone. nationalrail.co.uk/alertme | 03457 48 49 50 Calls cost no more than calls to geographic numbers (01 or 02) and may be recorded. | nationalrail.co.uk/plusbike For more information. |

South Western
Railway



National Rail
Britain's train companies working together

