



Alton Station

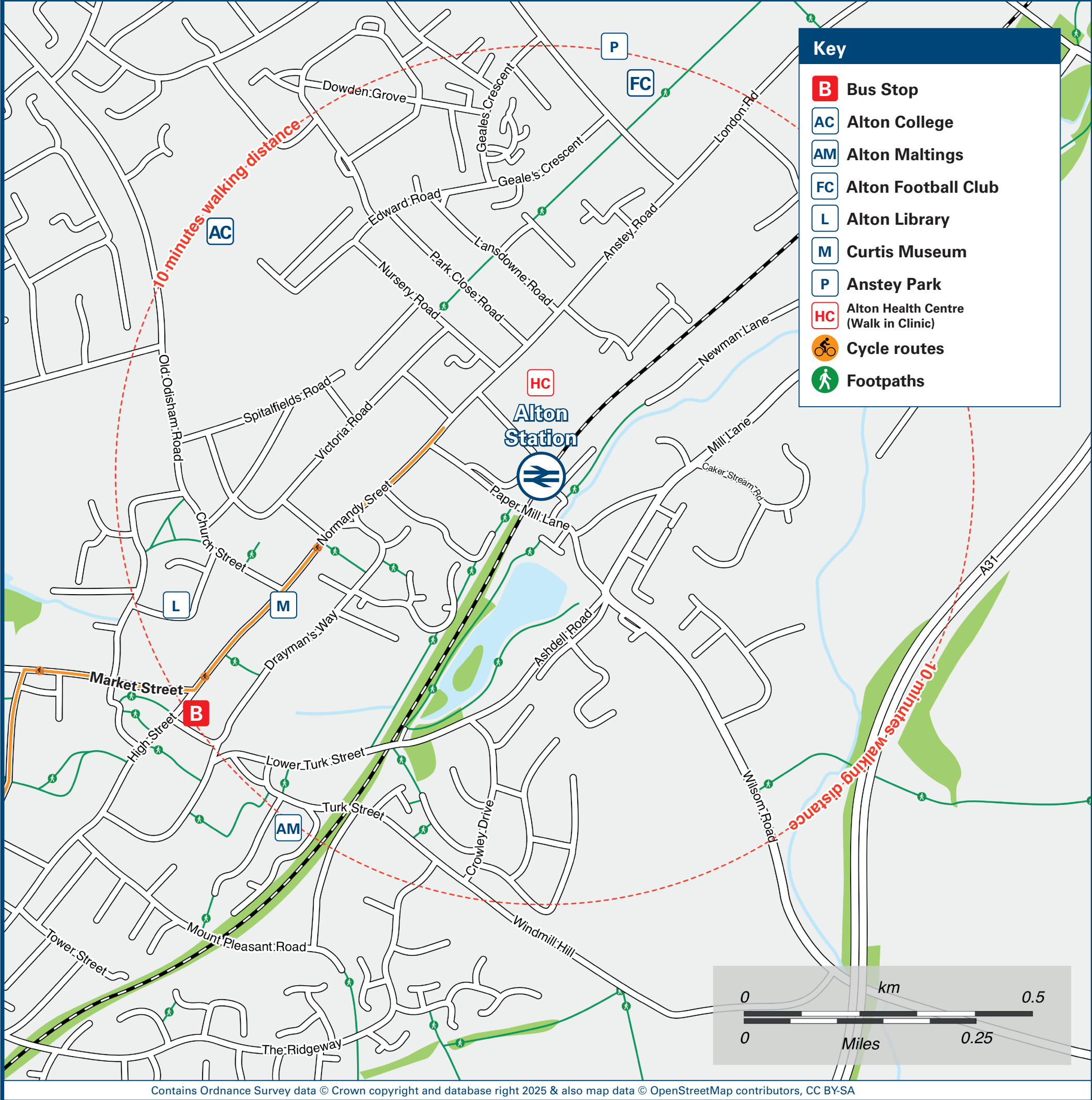
Onward Travel Information

Buses and Taxis



Rail replacement depart from the Station forecourt on Station Road.

Local area map



Main destinations by bus

(Data correct at November 2025)



DESTINATION	BUS ROUTES	BUS STOP
Alton (South View Rise / Greenfields Avenue)	13	N
Alton College	13	N
Alton Community Hospital (Chawton Park Road)	38*, 64	R
Alton Town Centre (High Street)	10 minutes walk from this Station 38*, 64, 65	R
Basingstoke	13	N
Bentley Village	65	R
Bishop's Sutton	64	R
Bordon	13	A
Chawton (for Jane Austen's House)	38*, 64(alight Lincoln Green)	R
East Worldham	13	A
Empshott	38*	R
Farnham	65	R

DESTINATION	BUS ROUTES	BUS STOP
Four Marks (for Watercress Line)	64	R
Greatham	38*	R
Guildford	65	R
Hook	13	N
Holybourne (for Eggar's School)	65	R
Kingsley	13	A
Liss	38*	R
Liss Forest	38*	R
New Alresford	64	R
North Wanborough	13	N
Petersfield (serves Petersfield station)	38*	R
Puttenham	65	R
RAF Odiham	13	N

DESTINATION	BUS ROUTES	BUS STOP
Ropley Dean (for Watercress Line)	64	R
Selborne (for Gilbert White's House and Gardens)	38*	R
Sheet	38*	R
Sleaford	13	A
Winchester	64	R

Notes

Bus routes 13, 64 and 65 operate daily services, Mondays to Sundays.
For bus times and days of operation please contact Traveline on www.traveline.info or call: 0871 200 22 33
Direct trains operate to this destination from this Station.
Mid Hants Railway (Watercress Line) to Four Marks, Ropley and New Alresford - Tel: 01962 733810 for all enquiries.
* Bus routes 38 operate a limited daytime service on Mondays to Fridays, only. No evenings, Saturdays or Sundays service.

Taxis

Alton station is served by a taxi rank or cab office. Check availability before travelling, and pre-book if necessary. Please consider using the following local operators: (Inclusion of this number doesn't represent any endorsement of the taxi firm)

Alton 8's Taxis
01420 88888

Tip Top Taxi
01420 579 979

H Cabs
01420 890 47

Further information about all onward travel

Local Cycle Info	National Cycle Info	Bus Times	PlusBus
easthants.gov.uk For more information about cycle routes.	walkwheelcycletrust.org.uk	See timetable displays at bus stops. www.traveline.info 0871 200 22 33 calls cost 15p per minute plus your phone company's access charge	 plusbus.info PlusBus is a discount price 'bus pass' that you buy with your train ticket. It gives you unlimited bus travel around your chosen town, on participating buses. Visit www.plusbus.info

National Rail Enquiries

Online	NRE App	Social Media	Alert Me	Contact Centre	PlusBike
nationalrail.co.uk	Free National Rail Enquiries app for iOS and Android	facebook.com/nationalrailenq @nationalrailenq	You can sign up to Alert Me messages on the National Rail Enquiries website where you can receive train and platform notifications directly to your smart phone. nationalrail.co.uk/alertme	03457 48 49 50 Calls cost no more than calls to geographic numbers (01 or 02) and may be recorded.	nationalrail.co.uk/plusbike For more information.



National Rail
Britain's train companies working together

