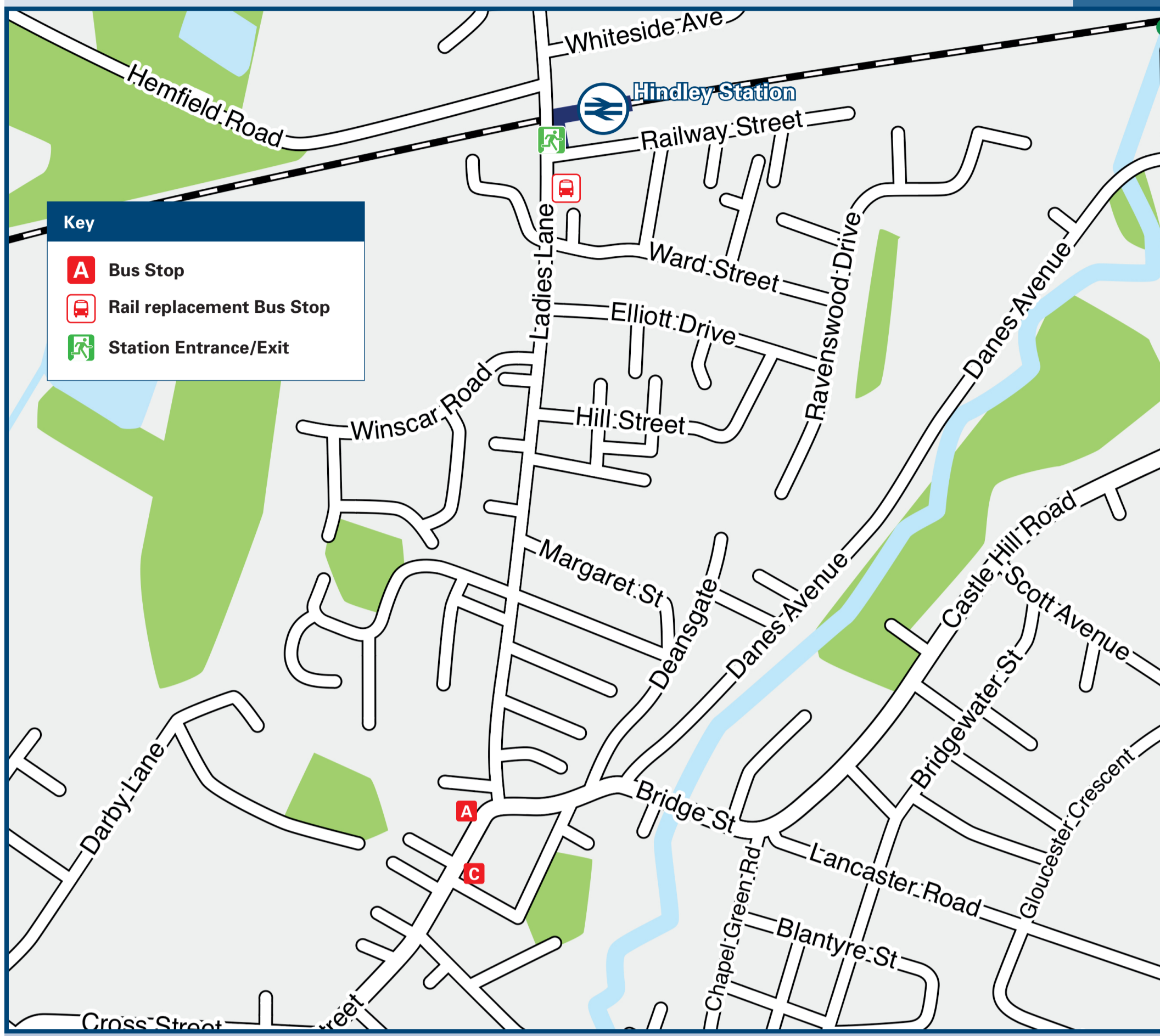




# Hindley Station

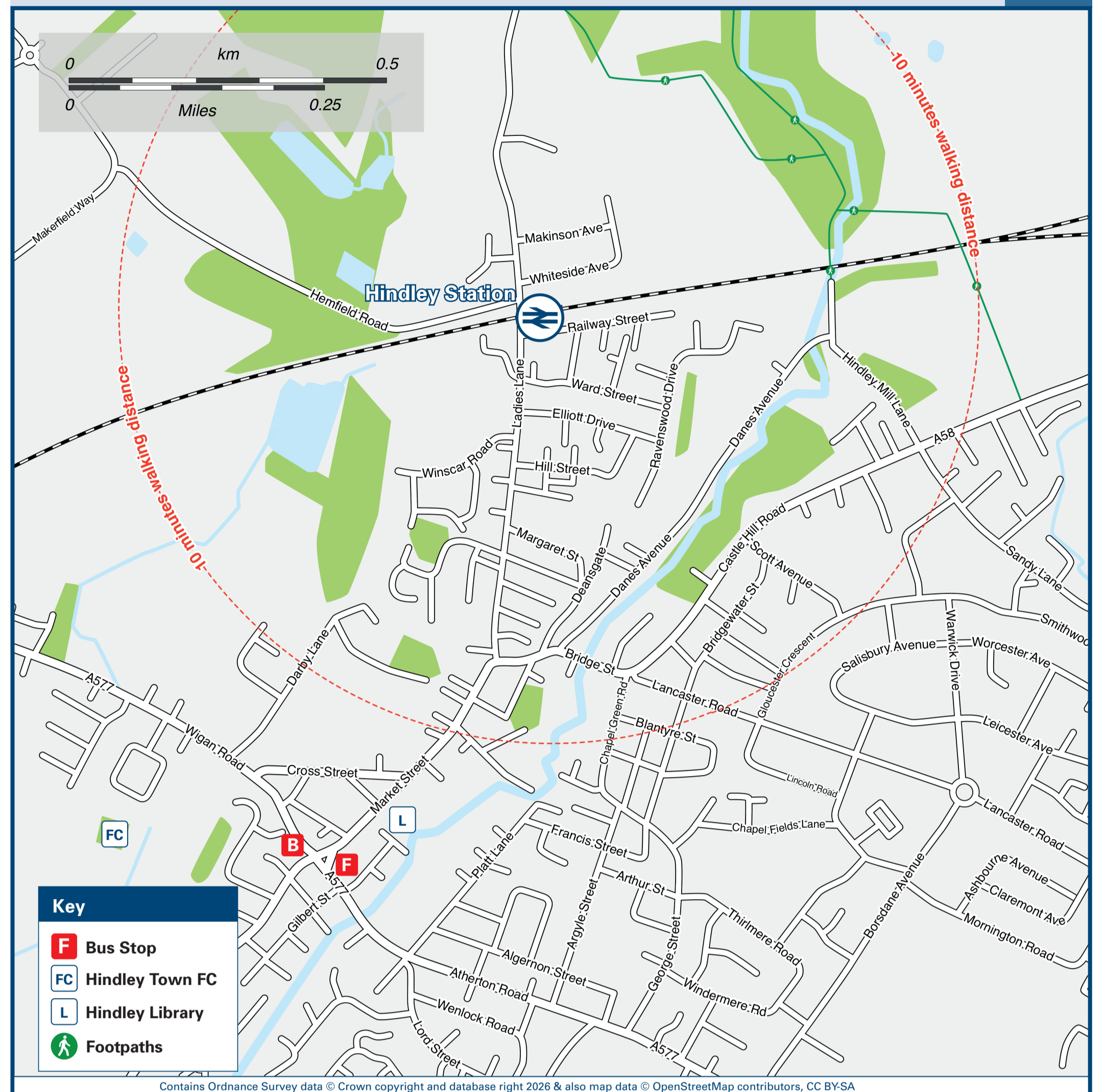
# Onward Travel Information

## Buses



Rail replacement Pick Up / Drop Off at the station entrance (Station side for Wigan, opposite side for Manchester / Bolton).

## Local area map



## Main destinations by bus

(Data correct at February 2026)



DESTINATION	BUS ROUTES	BUS STOP
Ashton-in-Makerfield	559	C
Atherton	132	F*
Bamfurlong	559	C
Belle Green Estate	634#	A
	608	B*
Bolton	559, 607	A
Boothstown/Ellenbrook	132	F*
Castle Hill	559, 607, 634#	A
Chequerbent	559, 607	A
Daisy Hill	607	A
Dangerous Corner	132	F*
Daubhill	559	A
Deane	559, 607	A

DESTINATION	BUS ROUTES	BUS STOP
Hart Common	559	A
Higher Ince	607	C
	132, 607, 608, 634#	B*
Hindley Green	607, 634#	A
	132, 608	F*
Hindley Village Centre	15 - 20 minutes walk from this station (please see Local area map)	
Hunger Hill	607	A
	607	C
Ince	132, 607, 608, 634#	B*
Leigh	608	F*
Mosley Common	132	F*
Over Hulton (Four Lane Ends)	559	A
Platt Bridge	559	C

DESTINATION	BUS ROUTES	BUS STOP
Tamar	608	F*
The Trafford Centre	132	F*
Tyldesley	132	F*
Westhoughton	559, 607	A
	607	C
Wigan	132, 607, 608, 634#	B*
	634#	A

### Notes

Bus routes 132, 559, 607 and 608 operate daily services, including evenings, Sundays and public holidays.  
 For bus times and days of operation please contact Traveline on [www.traveline.info](http://www.traveline.info) or call: 0871 200 22 33

- Direct trains operate to this destination from this station.
- \* Bus stops (F) and (B) are a 15-20 minutes walk from Hindley Railway Station.
- # Bus route 634 operates a limited daytime service on Mondays to Fridays, only.

## Taxis

Hindley station has no taxi rank or cab office. Advance booking is essential, please consider using the following local operators: (Inclusion of this number doesn't represent any endorsement of the taxi firm)

**Hindley Taxis**  
01942 256 777

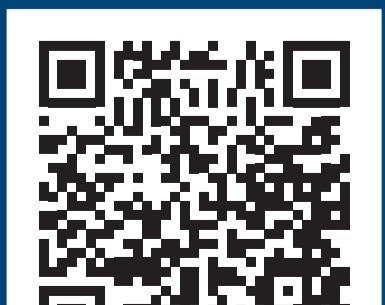
**Veezu**  
01942 366 666

**Paul's Travel Wigan**  
07783 578 446

## Further information about all onward travel

<b>Local Cycle Info</b> <a href="http://wigan.gov.uk">wigan.gov.uk</a> For more information about cycle routes.	<b>National Cycle Info</b> <a href="http://walkwheelcycletrust.org.uk">walkwheelcycletrust.org.uk</a>	<b>Bus Times</b> See timetable displays at bus stops.  <a href="http://www.traveline.info">www.traveline.info</a> 0871 200 22 33 call cost 13p per minute plus your phone company's access charge	<b>PlusBus</b>  <a href="http://plusbus.info">plusbus.info</a> PlusBus is a discount price 'bus pass' that you buy with your train ticket. It gives you unlimited bus travel around your chosen town, on participating buses. Visit <a href="http://www.plusbus.info">www.plusbus.info</a>
---	--	--	---

<b>National Rail Enquiries</b>					
<b>Online</b> <a href="http://nationalrail.co.uk">nationalrail.co.uk</a>	<b>NRE App</b> Free National Rail Enquiries app for iOS and Android	<b>Social Media</b> facebook.com/nationalrailenq @nationalrailenq	<b>Alert Me</b> You can sign up to Alert Me messages on the National Rail Enquiries website where you can receive train and platform notifications directly to your smart phone. <a href="http://nationalrail.co.uk/alertme">nationalrail.co.uk/alertme</a>	<b>Contact Centre</b> 03457 48 49 50 Calls cost no more than calls to geographic numbers (01 or 02) and may be recorded.	<b>PlusBike</b>  <a href="http://nationalrail.co.uk/plusbike">nationalrail.co.uk/plusbike</a> For more information.



This poster shows details of popular destinations and main, frequent bus routes. Additional services may run, so please check with Traveline or see posters at local bus stops. Whilst considerable care has been taken to ensure the information contained on this poster is correct and accurate, National Rail cannot accept responsibility for any loss or inconvenience caused by any errors or omissions, or for loss, damage, injury or inconvenience relating to the cancellation, alteration, delay or diversion of a service. For any feedback, please e-mail [comments@onwardtravelposters.com](mailto:comments@onwardtravelposters.com)

Scan this code with your mobile for full station information.