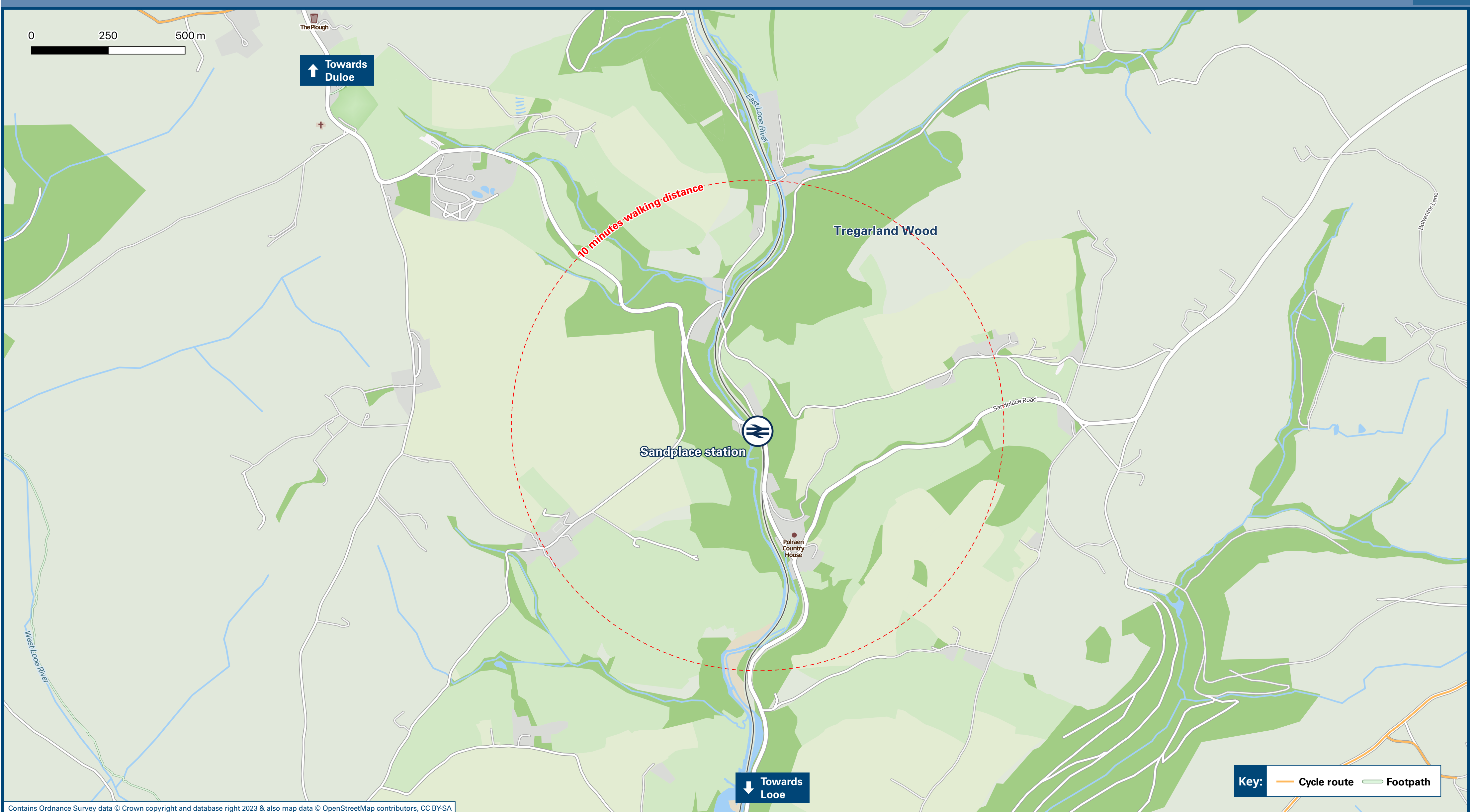




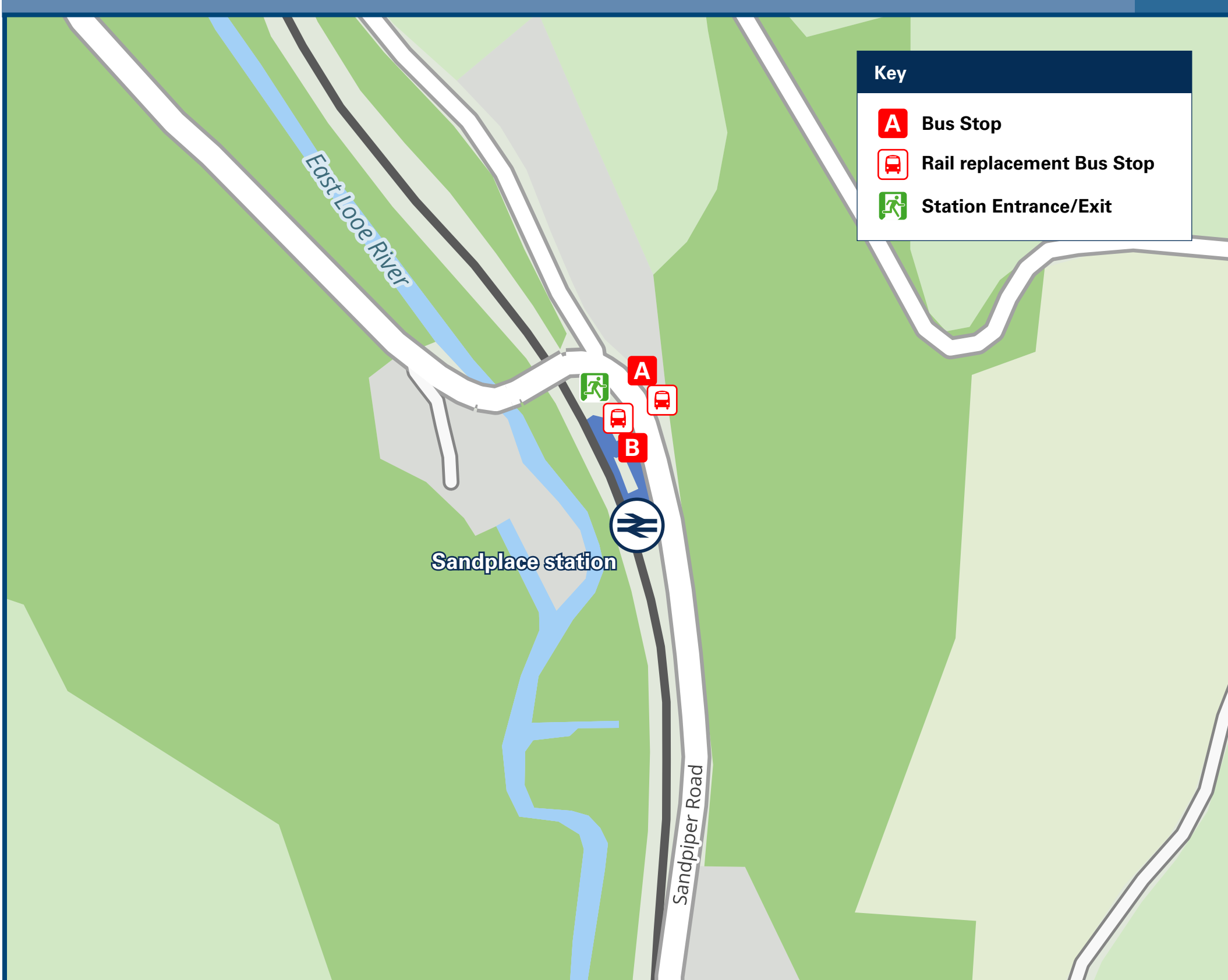
Sandplace Station

Onward Travel Information

Local area map



Buses



Rail replacement buses/coaches will depart by the station entrance (towards Liskeard) and at the lay-by opposite the station (towards Looe).

Main destinations by bus

(Data correct at November 2023)

DESTINATION	BUS ROUTES	BUS STOP
Caradon Camping (For Trelawne Manor)	73, 73A	A
Duloe	73, 73A	B
Killigarth	73, 73A	A
Lamellion	73, 73A	B
Liskeard (Town Centre)	73, 73A	B
Looe	73, 73A	A
Oaklands (Holiday Park)	73, 73A	A
Pelynt	73	A
Polperro	73, 73A	A
St Keyne	73, 73A	B
Seaview (Holiday Park)	73, 73A	A
Tencreek (Holiday Park)	73, 73A	A
West Looe	73	A
West Waylands (Holiday Park)	73	A

Notes Bus route 73 runs daily.
Direct trains operate from this Station to this destination.



Taxis

This station has no taxi rank or cab office. Advance booking is essential, please consider using the following local operators: (Inclusion of this number doesn't represent any endorsement of the taxi firm)

Looe Cabs
01503 761 010

Barries Taxis
07792 722 549

Chariots Of Hire
07930 870 149

Further information about all onward travel

Local Cycle Info cornwall.gov.uk For more information about cycle routes.	National Cycle Info sustrans.org.uk Sustrans is the UK's leading sustainable transport charity.	Bus Times See timetable displays at bus stops. www.traveline.info 0871 200 22 33 calls cost 12p per minute plus your phone company's access charge	NextBuses .mobi Find the bus times for your stop. Search for a bus stop by entering a postcode, street & town or a stop name & town.	PlusBus plusbus.info A discount price 'bus pass' that you buy with your train ticket. It gives you unlimited bus travel around your chosen town, on participating buses.
--	--	---	---	---

National Rail Enquiries

Online nationalrail.co.uk	NRE App Free National Rail Enquiries app for iOS and Android	Social Media facebook.com/nationalrailenq @nationalrailenq	Alert Me You can sign up to Alert Me messages on the National Rail Enquiries website where you can receive train and platform notifications directly to your smart phone. nationalrail.co.uk/alertme	Contact Centre 03457 48 49 50 Calls cost no more than calls to geographic numbers (01 or 02) and may be recorded.	PlusBike nationalrail.co.uk/plusbike For more information.
-------------------------------------	--	---	---	--	---



This poster shows details of popular destinations and main, frequent bus routes. Additional services may run, so please check with Traveline or see posters at local bus stops. Whilst considerable care has been taken to ensure the information contained on this poster is correct and accurate, National Rail cannot accept responsibility for any loss or inconvenience caused by any errors or omissions, or for loss, damage, injury or inconvenience relating to the cancellation, alteration, delay or diversion of a service. For any feedback, please e-mail comments@onwardtravelposters.com

Scan this code with your mobile for full station information.