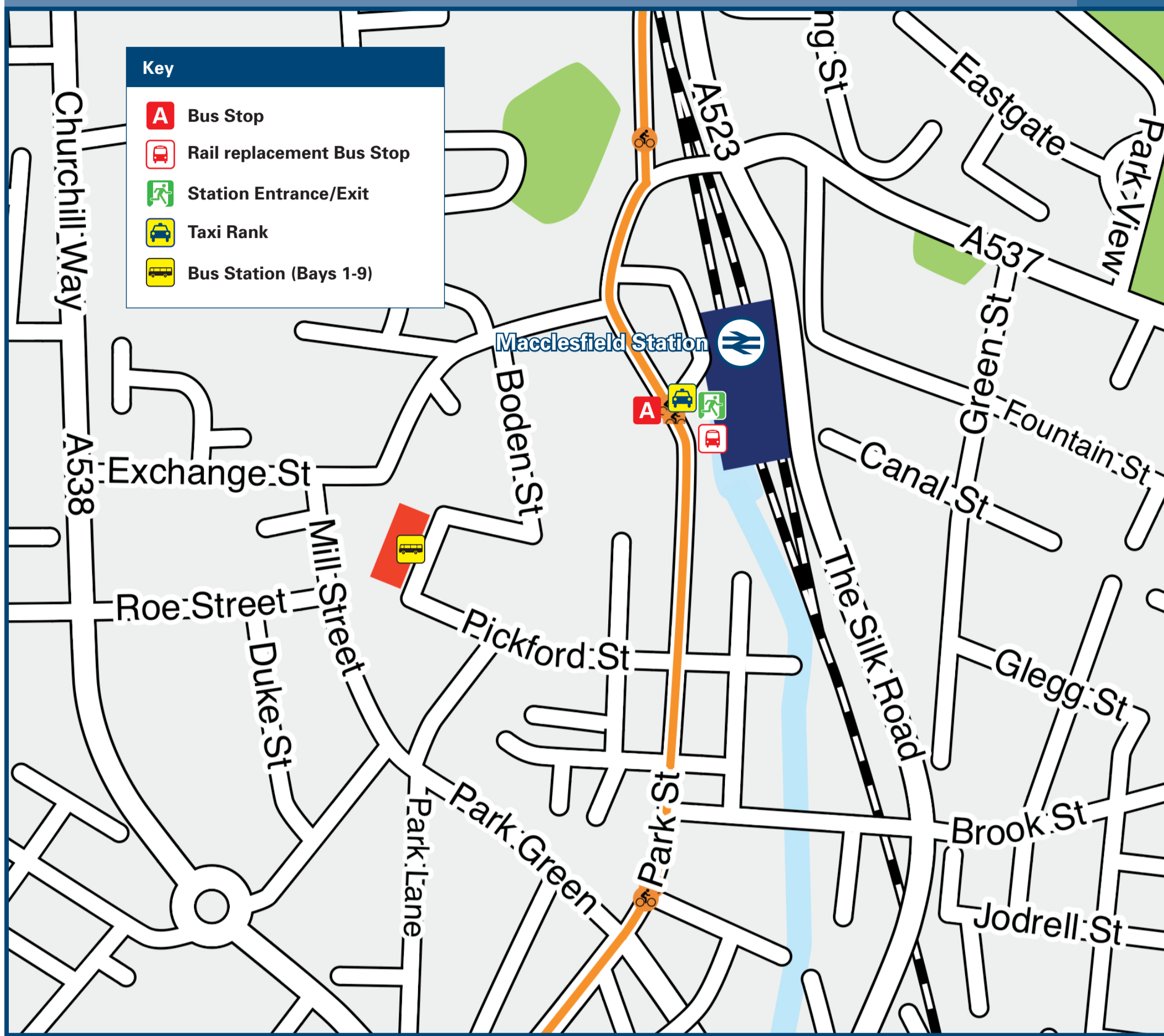




# Macclesfield Station

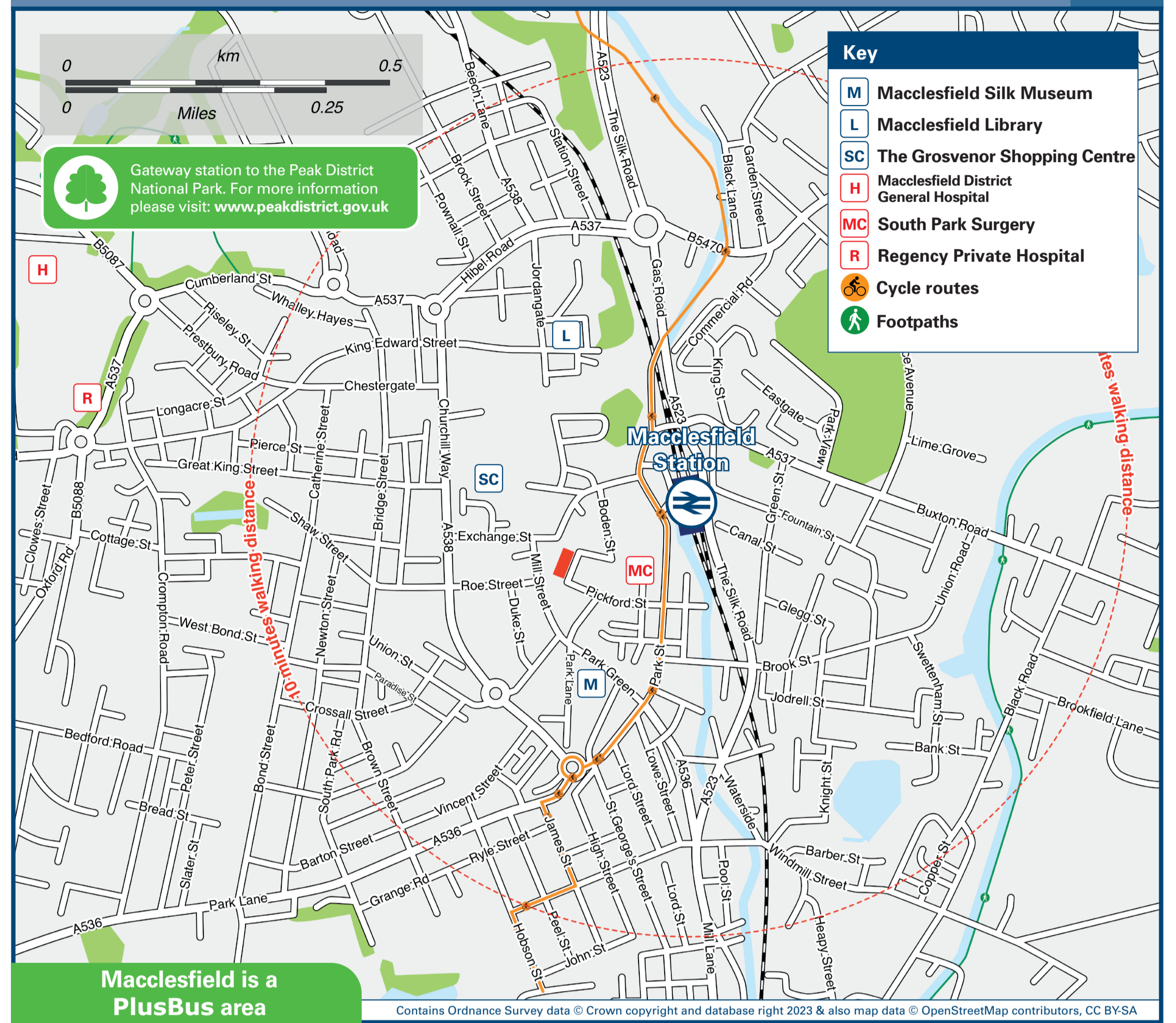
# Onward Travel Information

## Buses and Taxis



Rail replacement services Pick Up / Drop Off on the station forecourt.

## Local area map



PlusBus is a discount price 'bus pass' that you buy with your train ticket. It gives you unlimited bus travel around your chosen town, on participating buses. Visit [www.plusbus.info](http://www.plusbus.info)

## Main destinations by bus

(Data correct at October 2023)

DESTINATION	BUS ROUTES	BUS STOP
Adlington Station	393*	Bus Station
Alderley Edge	130	Bus Station
Alderley Park (Main Gate)	130	Bus Station
Altrincham Interchange	88	Bus Station
Bakewell	58#	Bus Station
Birch Vale	60	A, Bus Station
Bollington	10, 391, 392	Bus Station
Bollington Cross	10, 391, 392	Bus Station
Booth Green	391, 392	Bus Station
Broken Cross	3	A, Bus Station
Buxton	19, 88, 130	Bus Station
Cat & Fiddle Inn	58	Bus Station
Chatsworth House	58#	Bus Station
Chelford	88	Bus Station
Congleton	38	Bus Station
Crewe	38	Bus Station
Eaton	38	Bus Station
Furness Vale	60, 60A	A, Bus Station
Gawsworth	38	Bus Station
Handforth	130	Bus Station
Hayfield	60	A, Bus Station
Hazel Grove	391, 392, 393*	Bus Station
Henbury	88, 130	Bus Station
Hockley	391, 392	Bus Station
Horwich End	60, 60A	A, Bus Station
Hurdsfield (Church)	10	Bus Station
	60, 60A	A, Bus Station

DESTINATION	BUS ROUTES	BUS STOP
Kerridge	391	Bus Station
Kettleshulme	60, 60A	A, Bus Station
Knolls Green	88	Bus Station
Knutsford	88	Bus Station
Langley	14A	Bus Station
Leek	109	Bus Station
Longridge (Knutsford)	88	Bus Station
Lyme Green	14A, 109	Bus Station
Macclesfield College	3	A, Bus Station
	38	Bus Station
Macclesfield General Hospital	88, 130	Bus Station
Manchester Airport	130	Bus Station
Middlewood	391, 392	Bus Station
Mobberley	88	Bus Station
Monks Heath	88, 130	Bus Station
Moss Rose (for Macclesfield FC)	14, 14A, 109	Bus Station
New Mills	60, 60A	A, Bus Station
Newtown	60, 60A	A, Bus Station
Ollerton	88+	Bus Station
Over Peover	88+	Bus Station
Pott Shrigley (& Shrigley Hall Hotel)	391, 392	Bus Station
Poynton	391, 392, 393*	Bus Station
Prestbury	19	Bus Station
Rainow	60, 60A	A, Bus Station
Rushton Spencer	109	Bus Station
Sandbach	38	Bus Station

DESTINATION	BUS ROUTES	BUS STOP
Stockport	391, 392, 393*	Bus Station
Sutton Lane Ends	14A	Bus Station
Tytherington	10, 391, 392, 393*	Bus Station
Upton Priory Estate	19, 19A	Bus Station
Weston Estate	3	A, Bus Station
Whaley Bridge	60, 60A	A, Bus Station
Whirley Barn	19A	Bus Station
Wilmslow	88, 130	Bus Station
Wythenshawe	130	Bus Station

### Notes

- PlusBus destination, please see below for details.
- PlusBus tickets are valid only within the Macclesfield PlusBus zone on D&G Bus and High Peak Buses only.
- All bus routes from Macclesfield operate Mondays to Saturdays only except bus route 58 operates daily and bus route 393 operates Saturdays.
- For bus times please contact Traveline on 0871 200 22 33 or contact the bus operator (see below):
- D&G Bus (for bus routes 3, 10, 19, 19A, 38, 88 & 130) 01270 252 970; Belle Vue (for bus routes 391, 392 & 393) call 0161 947 9477; High Peak Buses (for bus routes 14, 14A, 58, 60 & 60A) call 0844 351 1120 or Aimee's (for bus route 109) call 01538 385 050.
- Direct trains operate to this destination from this Station.
- # Bus route 58 operates Sundays and Bank Holidays only to Bakewell and Chatsworth House.
- + Not all journeys serve this destination, please check timetables.
- \* Bus route 393 operates one early evening bus on Saturdays only.

### Taxis

Macclesfield station is served by a taxi rank or cab office. Check availability before travelling, and pre-book if necessary. Please consider using the following local operators: (Inclusion of this number doesn't represent any endorsement of the taxi firm)

**Macclesfield Radio Cars**  
01625 421 111

**In Time Taxis**  
01625 610 000

**Silvertown Taxis**  
01625 616 666

### Further information about all onward travel

<b>Local Cycle Info</b> <a href="http://cheshireeast.gov.uk">cheshireeast.gov.uk</a> <small>For more information about cycle routes.</small>	<b>National Cycle Info</b> <a href="http://sustrans.org.uk">sustrans.org.uk</a> <small>Sustrans is the UK's leading sustainable transport charity.</small>	<b>Bus Times</b> <small>See timetable displays at bus stops.</small>  <a href="http://www.traveline.info">www.traveline.info</a> <b>0871 200 22 33</b> <small>calls cost 12p per minute plus your phone company's access charge</small>	<b>NextBuses</b> <b>Find the bus times for your stop.</b> <small>Search for a bus stop by entering a postcode, street &amp; town or a stop name &amp; town.</small>	<b>PlusBus</b> <a href="http://plusbus.info">plusbus.info</a> <small>A discount price 'bus pass' that you buy with your train ticket. It gives you unlimited bus travel around your chosen town, on participating buses.</small>
--	--	--	---	--

### National Rail Enquiries

<b>Online</b> <a href="http://nationalrail.co.uk">nationalrail.co.uk</a>	<b>NRE App</b> <b>Free National Rail Enquiries app for iOS and Android</b>	<b>Social Media</b> <a href="https://facebook.com/nationalrailenq">facebook.com/nationalrailenq</a> <a href="https://twitter.com/nationalrailenq">@nationalrailenq</a>	<b>Alert Me</b> <small>You can sign up to Alert Me messages on the National Rail Enquiries website where you can receive train and platform notifications directly to your smart phone.</small> <a href="http://nationalrail.co.uk/alertme">nationalrail.co.uk/alertme</a>	<b>Contact Centre</b> <b>03457 48 49 50</b> <small>Calls cost no more than calls to geographic numbers (01 or 02) and may be recorded.</small>	<b>PlusBike</b> <a href="http://nationalrail.co.uk/plusbike">nationalrail.co.uk/plusbike</a> <small>For more information.</small>
---	---	--	--	--	---



**National Rail**  
Britain's train companies working together



This poster shows details of popular destinations and main, frequent bus routes. Additional services may run, so please check with Traveline or see posters at local bus stops. Whilst considerable care has been taken to ensure the information contained on this poster is correct and accurate, National Rail cannot accept responsibility for any loss or inconvenience caused by any errors or omissions, or for loss, damage, injury or inconvenience relating to the cancellation, alteration, delay or diversion of a service. For any feedback, please e-mail [comments@onwardtravelposters.com](mailto:comments@onwardtravelposters.com)

Scan this code with your mobile for full station information.