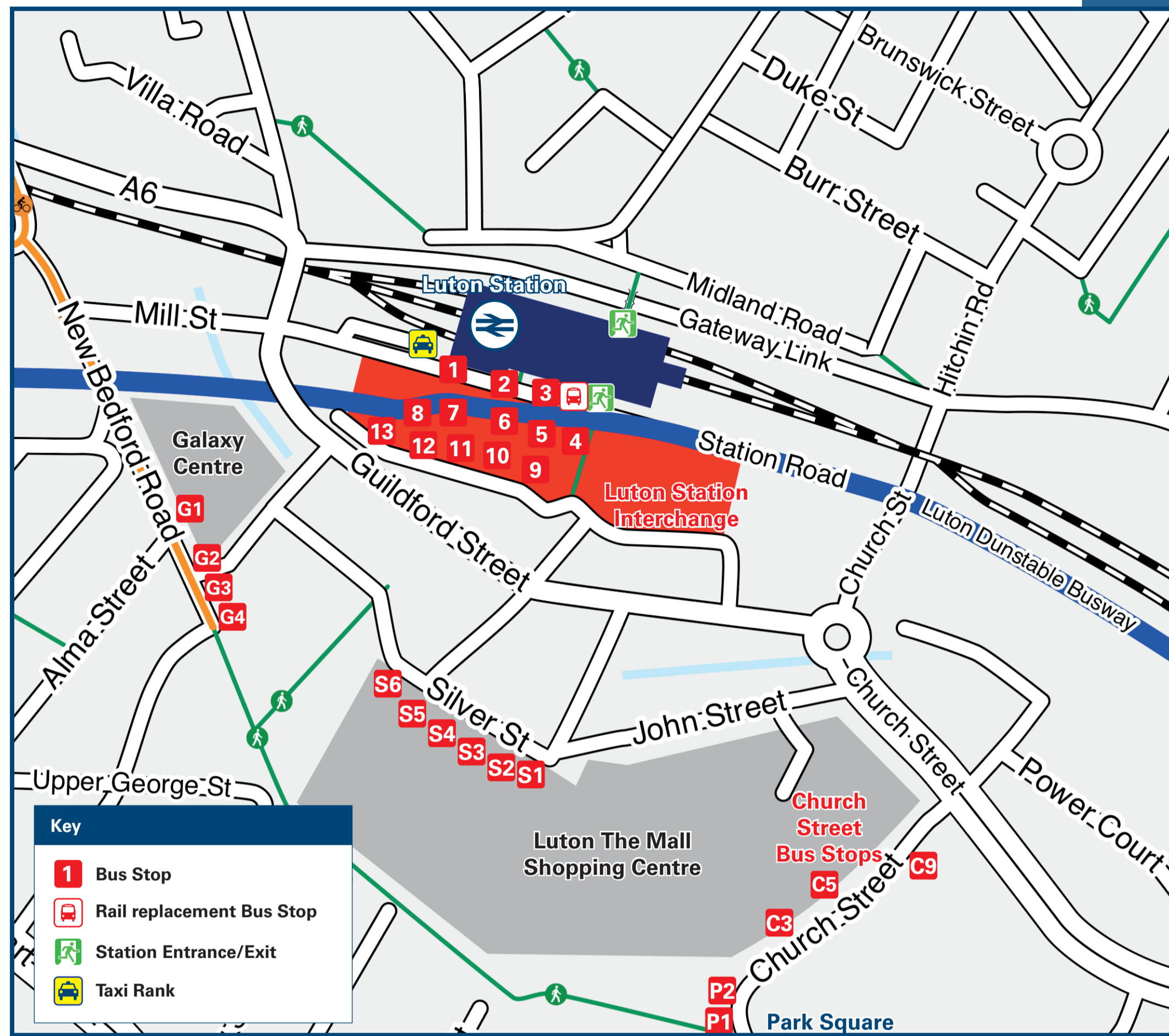




Luton Station

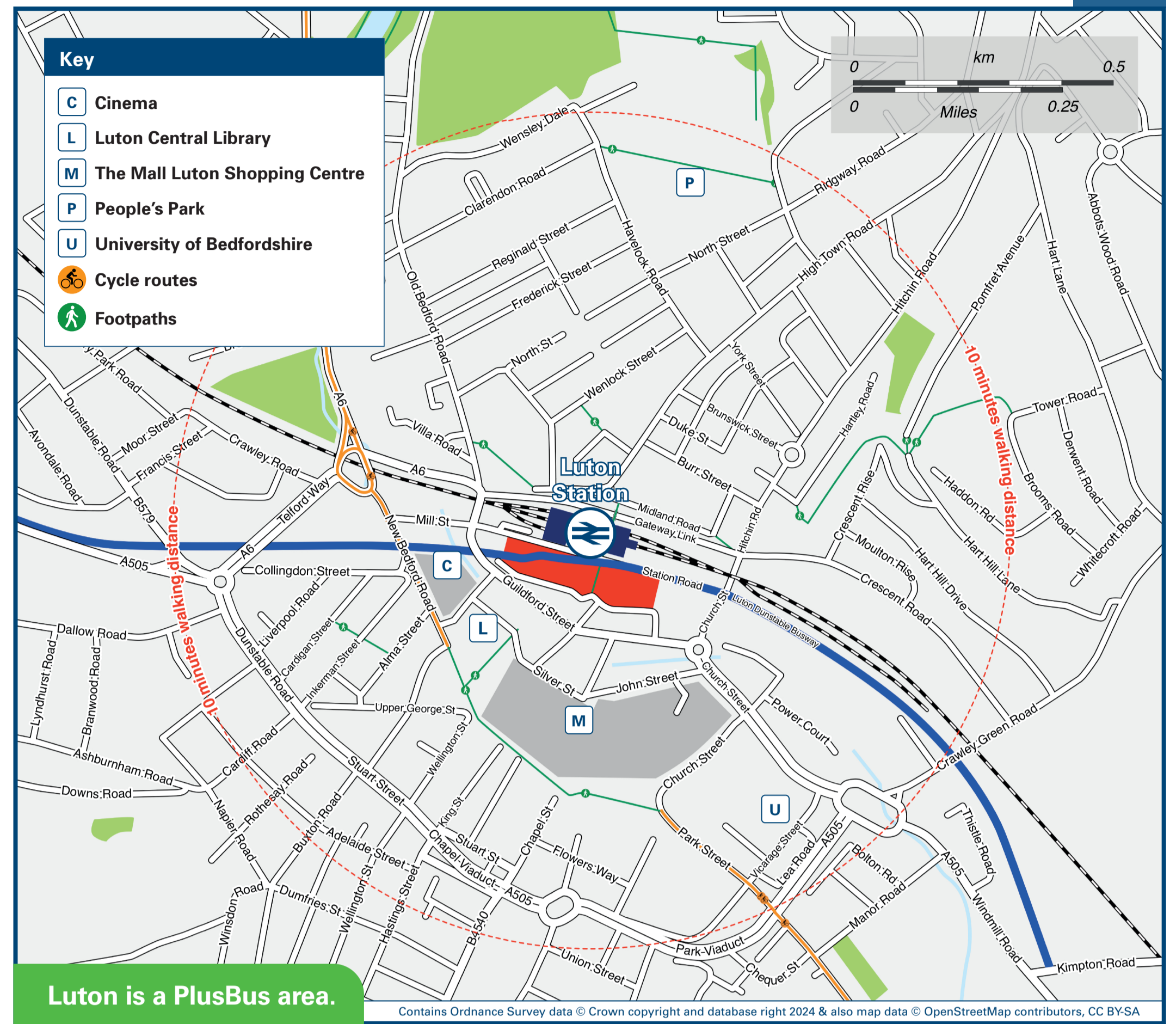
Onward Travel Information

Buses and Taxis



Rail Replacement buses depart from outside the station entrance on Station Road.

Local area map



Luton is a PlusBus area.

PlusBus is a discount price 'bus pass' that you buy with your train ticket. It gives you unlimited bus travel around your chosen town, on participating buses. Visit www.plusbus.info

Main destinations by bus

(Data correct at May 2024)

DESTINATION	BUS ROUTES	BUS STOP
Barnfield	24, 25~	Interchange 2
Barton-le-Clay	MK1	Interchange 12
Batford	610, X10##	Interchange 3
Bedford	MK1	Interchange 12
Bidwell	E	Galaxy Centre G3
Biscot	10, 23, 29	Interchange 2, Silver Street S4, Silver Street S2
Bletchley	F70, F77	Interchange 12
Bramingham Park	24, 25~	Interchange 2
Bury Park	27	Silver Street S6
Bushmead	31	Interchange 7
Butterfield Business Park	28, 28B~, 32	Interchange 13
Caddington	24, 25~	Interchange 2
Challney	101	Interchange 1
Clophill	230	Interchange 13
Dunstable (Amazon)	31	Interchange 7
Dunstable (Beecroft/Weatherby)	Z	Interchange 11
Dunstable (Downside Estate)	MK1	Interchange 12
Dunstable (Town Centre)	CX	Interchange 10
Dunstable (White Lion Retail Park)	C	Interchange 10
Farley Hill	B	Interchange 10
Fiamstead	A, B, C, Hi	Interchange 10
Harpenden	E	Galaxy Centre G3
Hatfield	F70, F77	Interchange 12
Hemel Hempstead	31	Interchange 7
Hitchin	A, B, C, CX, Hi	Interchange 10
Hockwell Ring	E	Galaxy Centre G3
	31	Interchange 7
	1, 4	Interchange 3, Park Square P2
	46	Park Square P1
	46	Park Square P1
	321, 610, 721~	Interchange 3, 4
	610, X10##	Interchange 3, 4
	721~	Interchange 3
	46	Park Square P1
	100, 101	Interchange 4
	24	Interchange 2
	28, 28B~, 32	Interchange 13

DESTINATION	BUS ROUTES	BUS STOP
Houghton Regis	Hi, Z, E	Interchange 10, Interchange 11, Galaxy Centre G3
Leagrave	23, 27	Interchange 2, Silver Street S2, Silver Street S6
Leighton Buzzard	28, 28B~, 32	Interchange 13
Lewsey Farm/Lewsey Park	F70, F77	Interchange 12
Limbury/Limbury Mead	Z	Interchange 11
Luton Airport AIR	10	Interchange 2, Silver Street S4, Silver Street S6
Luton & Dunstable Hospital	29	Interchange 2
Luton Town FC (Kenilworth Road)	27	Silver Street S6
Maidenhall	A	Interchange 1
Markyate	757#, MK1	Interchange 8
Marsh Farm	100	Interchange 4
Milton Keynes	24	Interchange 2
New Town	Z	Interchange 11
Panattoni Park (Luton)	31	Interchange 7
Parkside	32	Interchange 13
Redbourn	46	Park Square P1
Round Green	14	Church Street C3
Runfold	17, 17A	Church Street C2
Saints	29	Interchange 2, Silver Street S2, Silver Street S6
Silsoe	23, 29	Interchange 2, Silver Street S2
Slip End	MK1	Interchange 12
Stanbridge	230	Interchange 13
St Albans	46	Park Square P1
	F77	Interchange 12
	321, 721~	Interchange 8

DESTINATION	BUS ROUTES	BUS STOP
St Anne's	MK1, 12, 13	Interchange 3, Interchange 5, Church Street C3
Stevensage	17, 17A, 100, 101	Church Street C2
Stockwood Park	321, 610, 721~	Interchange 4
Stopsley	3	Interchange 3, 4
Sundon Park	12, 757#	Park Square P1
Thorn	17, 17A, 100, 101	Interchange 3, 4
Toddington	23	Interchange 2, Silver Street S2
University of Hertfordshire (de Havilland Campus)	24	Interchange 2
Waltham Park	Hi	Interchange 10
Watford	E	Galaxy Centre G3
Wheatthampstead	610, X10##	Interchange 3
Whipsnade Zoo	17, 17A	Church Street C2
Wigmore	ZOO*	Interchange 3
Wilstead	MK1	Interchange 3
Wixams	17, 17A, 100	Church Street C2, Interchange 4
	MK1	Interchange 2

Notes

- PlusBus destination, please see below for details.
- For bus times and days of operation please see bus stop/stand timetables or contact Traveline
- Direct trains operate to this destination from this station.
- Change here for connecting National Rail services.
- AIR Change here for connections to Domestic and International airline flights.
- # Plusbus tickets are NOT valid on bus route 757 on this poster.
- ~ Bus routes 25, 28B & 721 operate Mondays to Fridays services, only. No Saturday or Sunday services.
- * Bus route ZOO operates a limited service on Saturdays, Sundays, Public Holidays and during School Holidays, only.
- ## Bus route X10 operates a Mondays to Fridays service on University of Hertfordshire days, only.

Taxis

Luton is a major station where taxis are usually available on a rank. Advance booking is not normally necessary, unless arriving early in the morning or late at night. Operators who may accept bookings include: (Inclusion of this number doesn't represent any endorsement of the taxi firm)

Circle Cars
01582 400 400

Luton Taxis
01582 735 555

Go Cars
01582 404 040

Further information about all onward travel

Local Cycle Info luton.gov.uk For more information about cycle routes.	National Cycle Info sustrans.org.uk Sustrans is the UK's leading sustainable transport charity.	Bus Times See timetable displays at bus stops. www.traveline.info 0871 200 22 33 call cost 12p per minute plus your phone company's access charge	NextBuses Find the bus times for your stop. Search for a bus stop by entering a postcode, street & town or a stop name & town.	PlusBus plusbus.info A discount price 'bus pass' that you buy with your train ticket. It gives you unlimited bus travel around your chosen town, on participating buses.
---	---	--	---	---

National Rail Enquiries

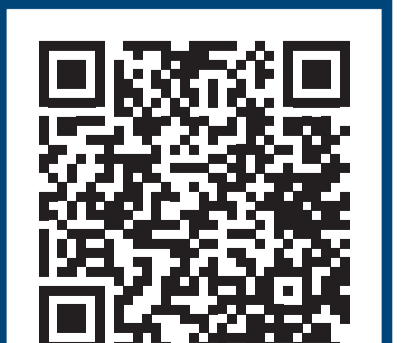
Online nationalrail.co.uk	NRE App Free National Rail Enquiries app for iOS and Android	Social Media facebook.com/nationalrailenq @nationalrailenq	Alert Me You can sign up to Alert Me messages on the National Rail Enquiries website where you can receive train and platform notifications directly to your smart phone. nationalrail.co.uk/alertme	Contact Centre 03457 48 49 50 Calls cost no more than calls to geographic numbers (01 or 02) and may be recorded.	PlusBike nationalrail.co.uk/plusbike For more information.
---	--	---	---	--	--

ThamesLink



National Rail

Britain's train companies working together



This poster shows details of popular destinations and main, frequent bus routes. Additional services may run, so please check with Traveline or see posters at local bus stops. Whilst considerable care has been taken to ensure the information contained on this poster is correct and accurate, National Rail cannot accept responsibility for any loss or inconvenience caused by any errors or omissions, or for loss, damage, injury or inconvenience relating to the cancellation, alteration, delay or diversion of a service. For any feedback, please e-mail comments@onwardtravelposters.com

Scan this code with your mobile for full station information.