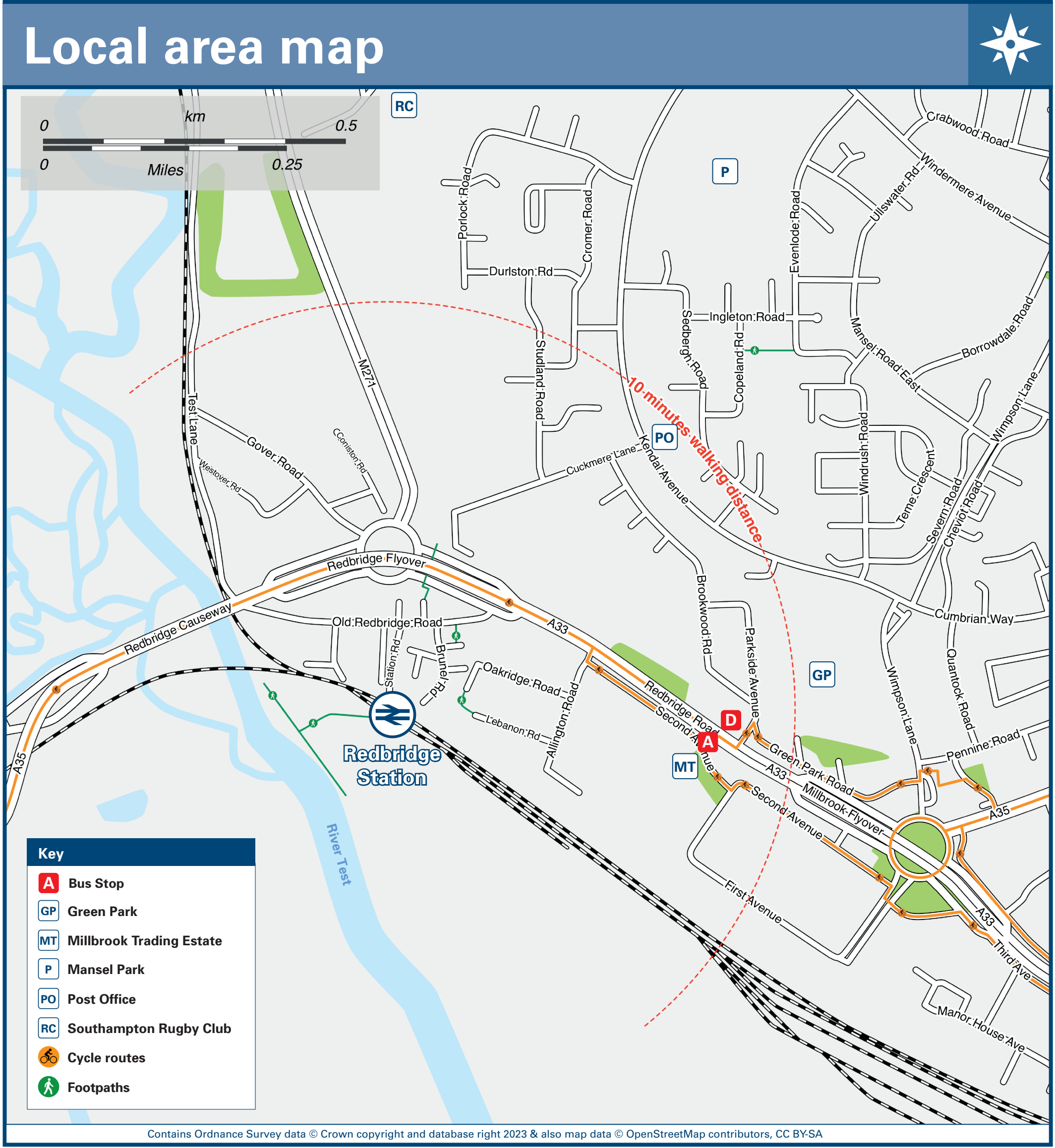
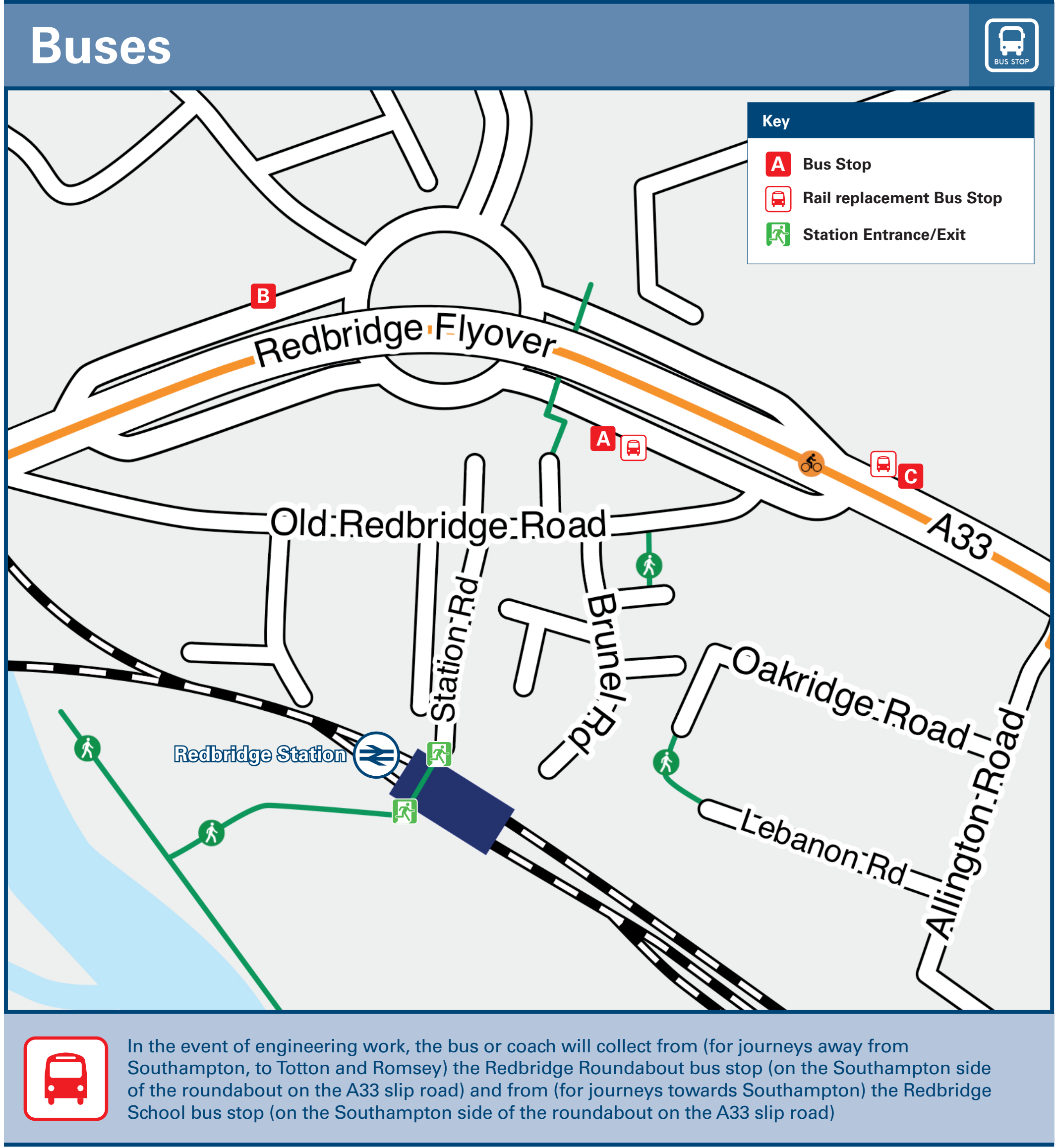




Redbridge Station

Onward Travel Information



Main destinations by bus

(Data correct at December 2023)

DESTINATION	BUS ROUTES	BUS STOP
Applemore (Claypits Lane / Challenger Way)	8	A
Applemore Tesco	8	A
Ashurst Station / Village	6	A
Calmore (Calmore Drive)	12	A
Calmore (Salisbury Road)	12	A
Dibden	8	A
Foxhills	6	A
Freemantle	8, 6, 8, 11, 12	B, C, D
Hounslow	8	A

DESTINATION	BUS ROUTES	BUS STOP
Hythe	8	A
Lyndhurst	6	A
Marchwood	8	A
Millbrook Station	8, 6, 8, 11, 12	B, C, D
Pooksgreen	8	A
Rushington (Totton bypass)	8	A
Rushington (Rushington Avenue / Rushington Lane)	6	A
Southampton Central Station	8, 6, 8, 11, 12	B, C, D

DESTINATION	BUS ROUTES	BUS STOP
Southampton City Centre	8	B, C
Testwood (Salisbury Road)	6, 8, 11, 12	D
Totton College	12	A
Totton and Town Centre	11	A
West Totton (Goodies)	6, 8, 11, 12	A

Notes

Bus routes 6, 8, 11 and 12 run daily services.
For bus times and days of operation please see bus stop timetables or contact Traveline

Direct trains operate to this destination from this Station

To this destination, bus route 8 operates on Mondays to Saturdays, only. No Sunday service.

<h3>Taxis</h3> <p>Redbridge Station has no taxi rank or cab office. Advance booking is essential, please consider using the following local operators: (Inclusion of this number doesn't represent any endorsement of the taxi firm)</p>	<p>Door 2 Door Cars 023 8039 3939</p> <p>Radio Taxis Southampton 023 8066 6666</p> <p>Southampton Airport Taxis 07312 103 400</p>
--	--

<h3>Further information about all onward travel</h3>					
<h4>Local Cycle Info</h4> <p>southampton.gov.uk For more information about cycle routes.</p>	<h4>National Cycle Info</h4> <p>sustrans.org.uk Sustrans is the UK's leading sustainable transport charity.</p>	<h4>Bus Times</h4> <p>See timetable displays at bus stops.</p> <p>www.traveline.info 0871 200 22 33 call cost 15p per minute plus your phone company's access charge</p>	<h4>NextBuses</h4> <p>Find the bus times for your stop.</p> <p>Search for a bus stop by entering a postcode, street & town or a stop name & town.</p>	<h4>PlusBus</h4> <p>plusbus.info A discount price 'bus pass' that you buy with your train ticket. It gives you unlimited bus travel around your chosen town, on participating buses.</p>	
<h3>National Rail Enquiries</h3>					
<h4>Online</h4> <p>nationalrail.co.uk</p>	<h4>NRE App</h4> <p>Free National Rail Enquiries app for iOS and Android</p>	<h4>Social Media</h4> <p>facebook.com/nationalrailenq @nationalrailenq</p>	<h4>Alert Me</h4> <p>You can sign up to Alert Me messages on the National Rail Enquiries website where you can receive train and platform notifications directly to your smart phone.</p> <p>nationalrail.co.uk/alertme</p>	<h4>Contact Centre</h4> <p>03457 48 49 50 Calls cost no more than calls to geographic numbers (01 or 02) and may be recorded.</p>	<h4>PlusBike</h4> <p>nationalrail.co.uk/plusbike For more information.</p>



National Rail
Britain's train companies working together

