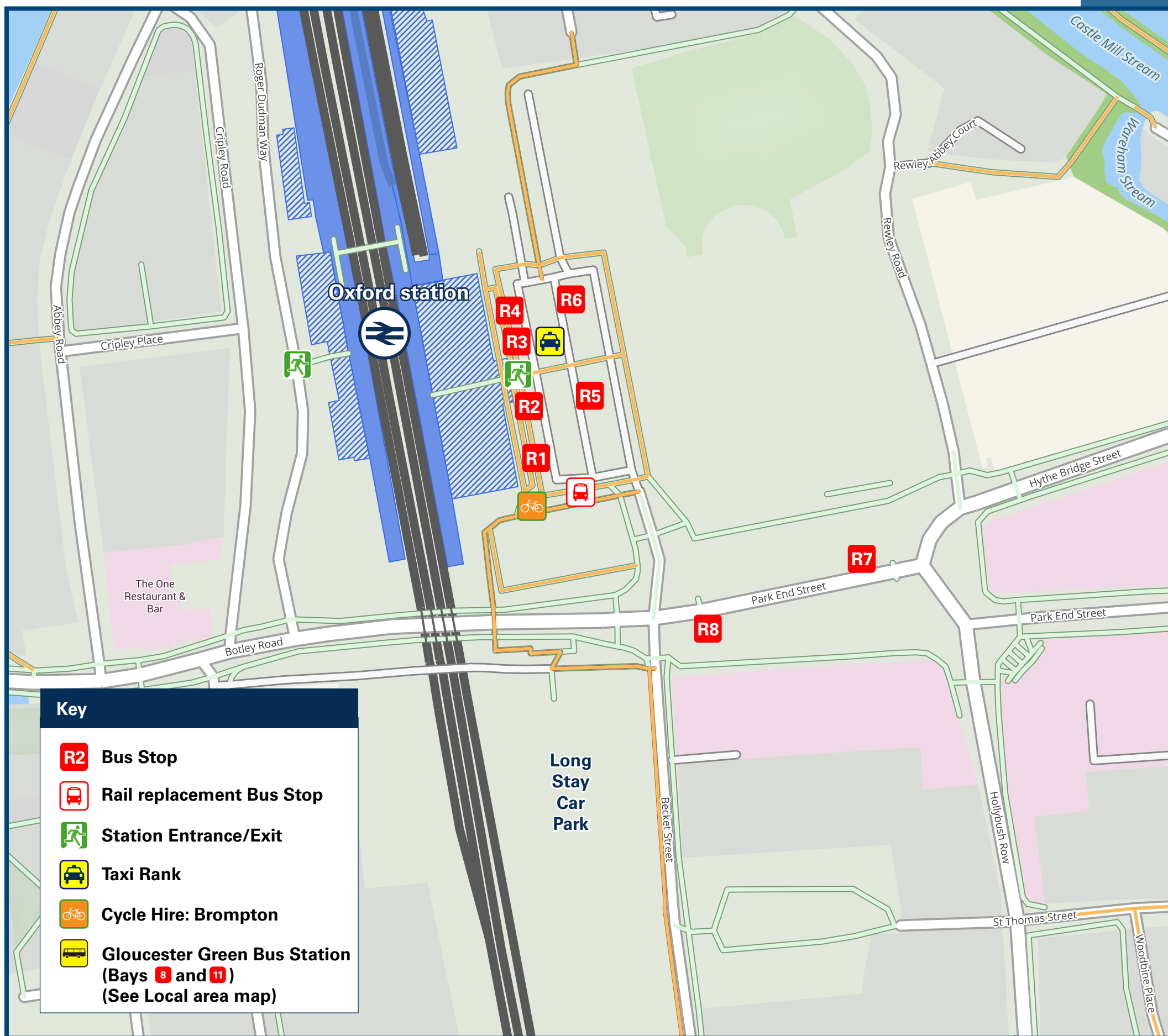




Oxford Station

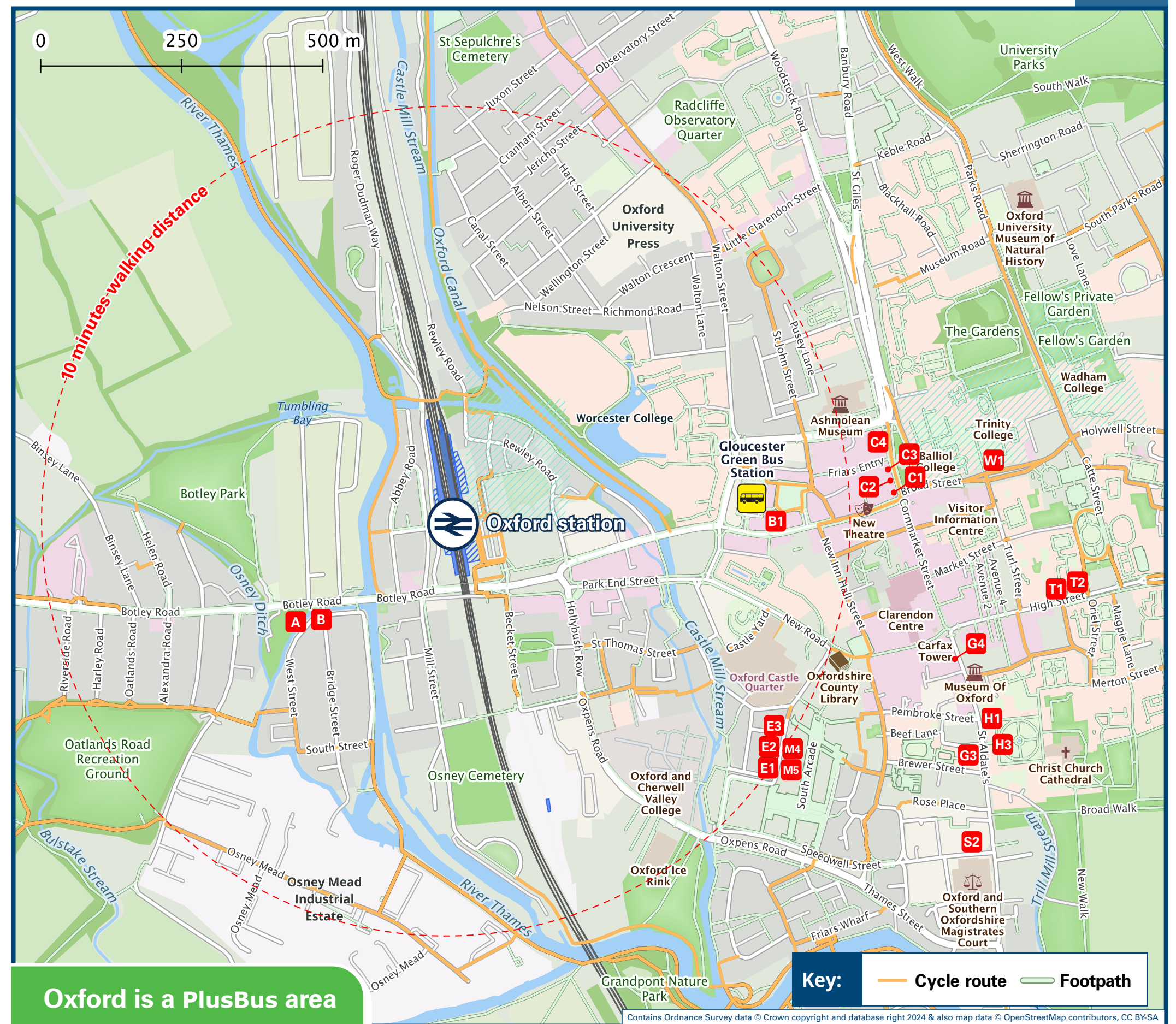
Onward Travel Information

Buses, Taxis and Cycle Hire



Rail replacement buses/coaches depart from the station forecourt in front of station.

Local area map



Oxford is a PlusBus area

PlusBus is a discount price 'bus pass' that you buy with your train ticket. It gives you unlimited bus travel around your chosen town, on participating buses. Visit www.plusbus.info

Main destinations by bus

(Data correct at July 2024)



DESTINATION	BUS ROUTES	BUS STOP
Abingdon	X1	R3
Aylesbury	X1, NX1*	H3
Banbury Road	X20	M5, T1
Barton	S7	C4
Barton Park	8, N8*	E2
Bedford	X3	G3
Bicester / Bicester Village Shopping Outlet	X5**	Bus Stn 1, 11
Blackbird Leys	S5, NS5*	C4
Blenheim Palace	X5**	Bus Stn 1, 11
Botley	1, 5, N1*	R2
Brookes University (Harcourt Hill Campus)	S3	R5
Brookes University (Headington Campus)	S3, S7	C4
Brookes University (Wheatley Campus)	44, 63^, 400, E1, NS9*, NU1*, S9	A
Carterton	400	A
Chalgrove	NU1*	A
Chalvey	400	R1
Chinnor	280, 400	S2, T2
Chipping Norton	400	R1
Churchill Hospital	S1, NS1*	R7
City Centre (George Street)	11	G4
City Centre (High Street)	S3	R5
City Centre (Magdalen Street)	275^	T1
City Centre (Police Station & Law Courts)	S3	R5
City Centre (St Aldates)	15	G2
City Centre (St Clements)	ST2^+	C2
City Centre (The Plain)	14	R4
City Centre (Westgate Shopping Centre)	1, 5, N1*	R2
Cowley (Templars Square Shopping Centre)	X1, NX1*	R3
Cowley Road	X1, NX1*	R3
Cumnor	1, 5, N1*	R2
Dean Court	X1, NX1*	R3
Didcot (via Abingdon)	280, 400	S2, T2
Didcot (direct via A34)	400	R1
	1, 5, N1*	R2
	44, 63^, NS9*, S9	A
	63^	A
	X2, NX2*	H1
	X32	H3

DESTINATION	BUS ROUTES	BUS STOP
Elms Rise	4A	B
Eynsham	E1	B
Faringdon	S1, NS1*	R7
Garsington	S2**	Bus Stn B
Greater Leys	S6	A
Great Milton	11	G4
Grove	3A	E1
Harwell Campus (Science Centre)	46	E3
Headington	X1, NX1*	R3
Horspath	S9, NS9*	A
Ifley Road	ST1***	Broad St W1
John Radcliffe Hospital	400	R2, T2
Kassam Stadium (Oxford United FC)	14	E3
Kidlington	3, 3A	E1
Kingston Bagpuize	14	R4
Littlemore	ST2^	C2
Marston Village	X3	G3
Milton Keynes (City Centre)	3A	E1
Minchery Farm	S7	R5
New Marston	63^, S6	A
Northway	3A, X40, NX40*	E1
Nuffield Hospital	14	R4
Oxford Science Park	14	R4
Oxford Sightseeing Tour	X5**	Bus Stn 1, 11
Pear Tree Park & Ride	5A	G5, S2
Reading	X3	G3
Redbridge Park & Ride	14	R4
Risinghurst	ST2^	C2
Rose Hill	3X^^	R3
Sandford-on-Thames	3A, X40, NX40*	E1
Seacourt Park & Ride	400	A
Shrivenham	S6	A
Southmoor	S6	A
Summertown (Marston Ferry Road)	14	R4
Summertown (Shops)	S7	R5
Swindon	S6	A
Thame	280	S2, T2
	X20	M5, T1

DESTINATION	BUS ROUTES	BUS STOP
Thornhill Park & Ride	400	R1
Wallingford	X40, NX40*	E1
Wantage	X1, NX1*	R3
Watlington	S9, NS9*	A
Wheatley	11	G4
	280, 400	S2, T2
	400	R1
	46	E3
	S1, NS1*	R7
	S7	R5
	S2**	Bus Stn B
Wolvercote	6	C3
Wood Farm	15	G2
Woodstock	S3, S7	R5
Wytham Village	ST2^+	C2
Yarnton	S3	R5

Notes

- PlusBus destination, please see below for details.
- Please note: Botley Road railway bridge is closed to road traffic until October 2024.
- For bus times and days of operation, please see bus stop timetables, enquire at the Gloucester Green Travel Shop or contact Traveline on 0871 200 22 33.
- Direct trains operate to this destination from this station.
- For connecting trains to Swindon, please change at Didcot Parkway station.
- It's approximately 10 to 15 minutes walk from Oxford station to Oxford city centre locations (see maps).
- * This is a Night Bus and runs mainly on Friday and Saturday late nights between approximately 00:00 and 03:00. Some Night Buses run on other nights, please check timetables.
- ** This service departs from Gloucester Green Bus Station, 8 minutes walk from this station - see Local area map.
- *** This service departs from Broad Street stop W1, 12 minutes walk from this station - see Local area map.
- + Take bus ST2 to Headington Lime Walk bus stop, it's a 10 minutes walk to Churchill Hospital from there.
- ^ This service runs Mondays to Fridays only.
- ^^ This service runs early morning and evening Mondays to Fridays only.

Taxis

Oxford is a major station where taxis are usually available on a rank. Advance booking is not normally necessary, unless arriving early in the morning or late at night. Operators who may accept bookings include: (Inclusion of this number doesn't represent any endorsement of the taxi firm)

A2B Oxford Taxis
01865 477 477

Oxford City Cars
01865 703 030

001 Taxis
01865 240 000

Bike Hire

bromptondock.co.uk
020 8232 3931 (text 2624 to reserve bike)
or Bainton Bikes (for pre-booked Cycle Hire delivered to the Station) info@baintonbikes.com 01865 311 610.

Further information about all onward travel

Local Cycle Info oxfordshire.gov.uk For more information about cycle routes.	National Cycle Info sustrans.org.uk Sustrans is the UK's leading sustainable transport charity.	Bus Times See timetable displays at bus stops. www.traveline.info 0871 200 22 33 calls cost 10p per minute plus your phone company's access charge	NextBuses Find the bus times for your stop. Search for a bus stop by entering a postcode, street & town or a stop name & town.	PlusBus plusbus.info A discount price 'bus pass' that you buy with your train ticket. It gives you unlimited bus travel around your chosen town, on participating buses.
---	---	---	--	--

National Rail Enquiries

Online nationalrail.co.uk	NRE App Free National Rail Enquiries app for iOS and Android	Social Media facebook.com/nationalrailenq @nationalrailenq	Alert Me You can sign up to Alert Me messages on the National Rail Enquiries website where you can receive train and platform notifications directly to your smart phone. nationalrail.co.uk/alertme	Contact Centre 03457 48 49 50 Calls cost no more than calls to geographic numbers (01 or 02) and may be recorded.	PlusBike nationalrail.co.uk/plusbike For more information.
---	--	--	---	---	--



This poster shows details of popular destinations and main, frequent bus routes. Additional services may run, so please check with Traveline or see posters at local bus stops. Whilst considerable care has been taken to ensure the information contained on this poster is correct and accurate, National Rail cannot accept responsibility for any loss or inconvenience caused by any errors or omissions, or for loss, damage, injury or inconvenience relating to the cancellation, alteration, delay or diversion of a service. For any feedback, please e-mail comments@onwardtravelposters.com. Scan this code with your mobile for full station information.