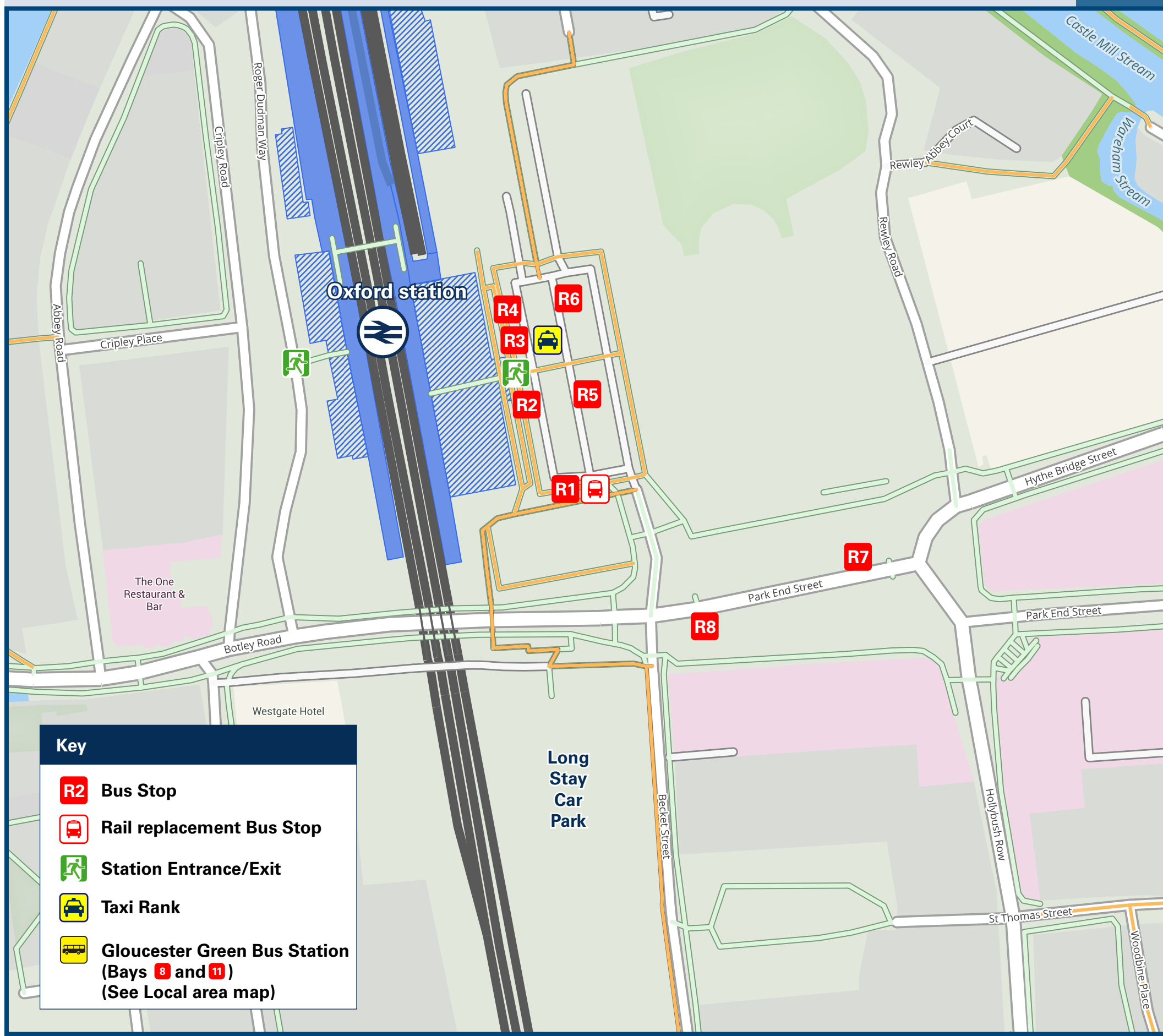




Oxford Station

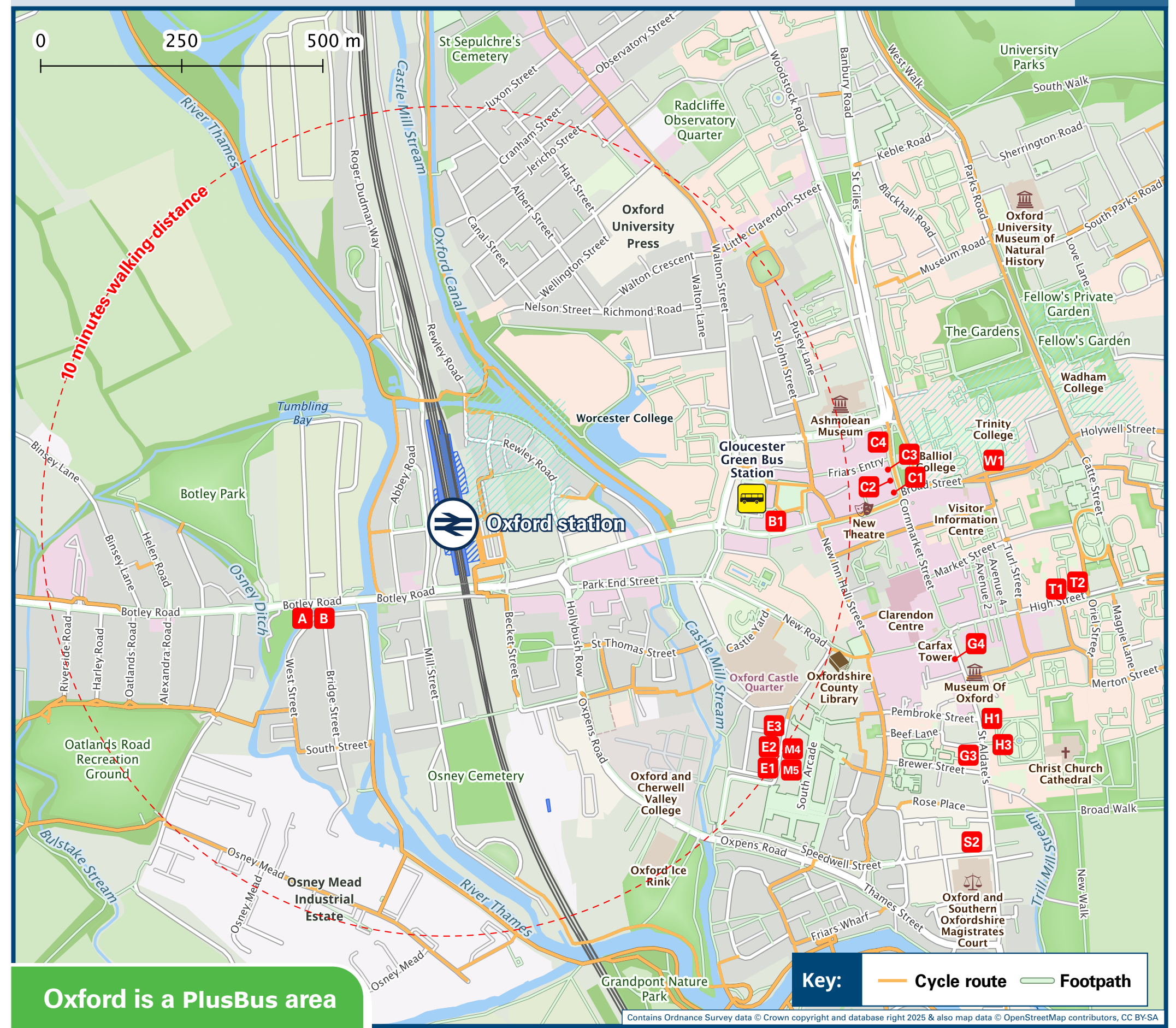
Onward Travel Information

Buses, Taxis and Cycle Hire



Rail replacement buses/coaches depart from the front of the station, or as directed by signs.

Local area map



Oxford is a PlusBus area



Add PlusBus to your train ticket—now available on eTicket from leading rail ticketing apps—for unlimited bus travel in the PlusBus zone in your destination town or city. Visit www.plusbus.info

Main destinations by bus

(Data correct at January 2026)



DESTINATION	BUS ROUTES	BUS STOP
Abingdon	X1, X15 44	R 3 A
Blackbird Leys	1, 5	R 2
Blenheim Palace	S3	R 5
Botley	4A, E1 4A, 4B, 44, 63#, S9	B A
Brookes University (Harcourt Hill Campus)	4B	A
Brookes University (Headington Campus)	400, N400*	R 6
Carterton	S1, NS1*	R 7
Chipping Norton	S3	R 5
City Centre (George Street, Magdalen Street - for Ashmolean Museum, Broad Street)	14 S3 S1, NS1*	R 4 R 5 R 7
City Centre (High Street)	1, 5 3, 3A, 400, N400*	R 2 R 6
City Centre (St Aldates)	1, 5 X1, X15 400, N400*	R 2 R 3 R 6
City Centre (Westgate Shopping Centre)	1, 5 400, N400*	R 2 R 6
Cowley (Templars Square Shopping Centre)	1, 5	R 2
Cowley Road	1, 5	R 2
Cumnor	44, 63#, S9	A
Dean Court	63#	A
Eynsham	E1	B
Faringdon	S1, NS1* S6	R 7 A

DESTINATION	BUS ROUTES	BUS STOP
Grove	X1 S9	R 3 A
Headington	400, N400*	R 6
Iffley Road	14	R 4
John Radcliffe Hospital	3, 3A	R 6
Kingston Bagpuize	14	R 4
Littlemore, for Kassam Stadium	X15 S6	R 3 A
Marcham	3A	R 6
Marston Village	X1, X15	R 3
Northway	14	R 4
Oxford Science Park	14 3X#	R 4 R 3
Oxford Sightseeing Tour	3A City Sightseeing	R 6 R 1
Pear Tree Park & Ride	S3	R 5
Redbridge Park & Ride	3X#, X1, X15	R 3
Risinghurst	14	R 4
Rose Hill	3, 3A	R 6
Seacourt Park & Ride	4A, 4B	A
Shrivenham	S6	A
Southmoor	X15 S6	R 3 A
Summertown (Marston Ferry Road)	14	R 4
Summertown (Woodstock Road)	S3 S1, NS1*	R 5 R 7
Swindon	S6	A
Thame	400, N400*	R 6
Thornhill Park & Ride	400, N400*	R 6

DESTINATION	BUS ROUTES	BUS STOP
Wantage	X1 S9	R 3 A
Wheatley	400, N400*	R 6
Witney	X15	R 3
Woodstock	S1, NS1*	R 7
Wootton	S3	R 5
Yarnton	44 S3	A R 5

Notes

- PlusBus destination, please see below for details.
- More bus services are available from Gloucester Green Bus Station (please see Local Area Map) and also from bus stops at St Aldgates, George Street, the High Street and from within the City Centre.
- For bus times and days of operation please contact Traveline on www.traveline.info or call: 0871 200 22 33
- Direct trains operate to this destination from this station.
- It's approximately 10 to 15 minutes walk from Oxford station to these locations in Oxford city centre. (see maps).
- * Bus routes N400 & NS1 are Night Buses, running on Friday and Saturday late nights. N400 runs between approximately 00:10 and 02:50; NS1 runs between approximately 01:15 and 03:45.
- # Bus routes 3X & 63 run daytime services on Mondays to Fridays, only.
- Bike Hire bromptondock.co.uk 020 8232 3931 (text 2624 to reserve bike) or Bainton Bikes (for pre-booked Cycle Hire delivered to the Station) info@baintonbikes.com 01865 311 610.

Taxis

Oxford is a major station where taxis are usually available on a rank. Advance booking is not normally necessary, unless arriving early in the morning or late at night. Operators who may accept bookings include: (Inclusion of this number doesn't represent any endorsement of the taxi firm)

A2B Oxford Taxis
01865 477 477

Oxford Cars
01865 777 333

001 Taxis
01865 240 000

Further information about all onward travel

Local Cycle Info oxfordshire.gov.uk For more information about cycle routes.	National Cycle Info walkwheelcycletrust.org.uk	Bus Times See timetable displays at bus stops. www.traveline.info 0871 200 22 33 calls cost 10p per minute plus your phone company's access charge	PlusBus plusbus.info PlusBus is a discount price 'bus pass' that you buy with your train ticket. It gives you unlimited bus travel around your chosen town, on participating buses. Visit www.plusbus.info
---	--	---	---

National Rail Enquiries

Online nationalrail.co.uk	NRE App Free National Rail Enquiries app for iOS and Android	Social Media facebook.com/nationalrailenq @nationalrailenq	Alert Me You can sign up to Alert Me messages on the National Rail Enquiries website where you can receive train and platform notifications directly to your smart phone. nationalrail.co.uk/alertme	Contact Centre 03457 48 49 50 Calls cost no more than calls to geographic numbers (01 or 02) and may be recorded.	PlusBike nationalrail.co.uk/plusbike For more information.
---	--	---	---	--	--



This poster shows details of popular destinations and main, frequent bus routes. Additional services may run, so please check with Traveline or see posters at local bus stops. Whilst considerable care has been taken to ensure the information contained on this poster is correct and accurate, National Rail cannot accept responsibility for any loss or inconvenience caused by any errors or omissions, or for loss, damage, injury or inconvenience relating to the cancellation, alteration, delay or diversion of a service. For any feedback, please e-mail comments@onwardtravelposters.com

Scan this code with your mobile for full station information.