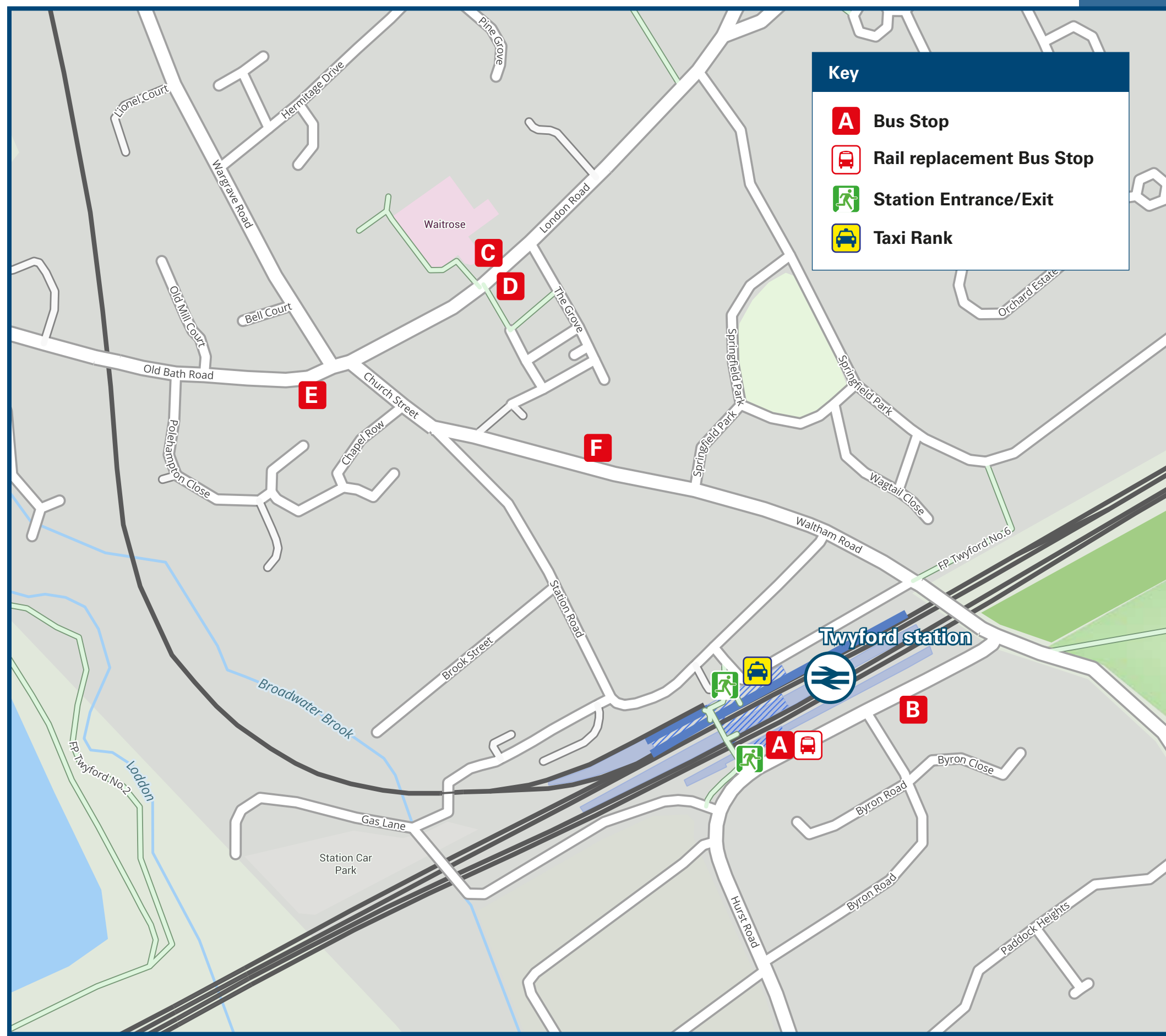




# Twyford Station

# Onward Travel Information

## Buses and Taxis



Rail replacement services depart from the station forecourt.

## Local area map



## Main destinations by bus

(Data correct at September 2024)

DESTINATION	BUS ROUTES	BUS STOP
Charvil	128, 129	A
	127*, 850	D
	127*, 128, 129, 850	E
Davis Street (Dinton Pastures)	128, 129	B, F
Emmbrook (Reading Road)	128, 129	B, F
Hare Hatch	127*	C
Henley-on-Thames	850	C
High Wycombe	850	C
Hurst	128	B, F
Knowl Hill	127*	C
Maidenhead	127*	C
Marlow	850	C
Reading College	128, 129	A
	127*, 850	D
	127*, 129, 850	E

DESTINATION	BUS ROUTES	BUS STOP
Reading (Town Centre)	128, 129	A
	127*, 850	D
	127*, 129, 850	E
Sonning Village	128, 129	A
	127*, 850**	D
	127, 129, 850**	E
Sutton Business Park (London Road)	128, 129	A
	127*, 850	D
Twyford (Amberley Drive)	127*, 129, 850	E
	850	C
Twyford (Broad Hinton)	128, 129	B, F
Upper Wargrave (Highfield Park)	127*	C
Wargrave	850	C
Whitley Green	128, 129	B, F
Winnersh (Crossroads)	128, 129	B, F

DESTINATION	BUS ROUTES	BUS STOP
Wokingham	128, 129	B, F
	128	A
Woodley	127*	D
	127*, 128	E

**Notes**

Bus route 128 operates Mondays to Saturdays.  
 Bus route 129 operates Mondays to Fridays only.  
 Bus route 850 operates daily, Mondays to Sundays.  
 For bus times and further information, please contact Traveline on 0871 200 22 33.

Direct trains operate from this station to this destination.  
 For connecting train services to Marlow, please change trains at Maidenhead.  
 For connecting train services to Winnersh and Wokingham, please change trains at Reading.  
 \* Bus route 127 operates Saturdays only.  
 \*\* Bus route 850 calls at Sonning A4 Bath Road, not the village centre.

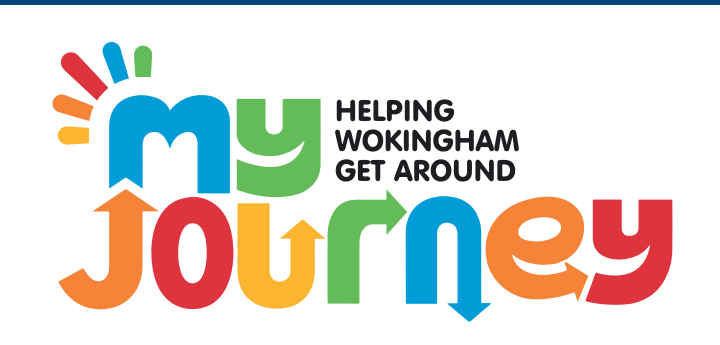
**Taxis**

Twyford station is served by a taxi rank or cab office. Check availability before travelling, and pre-book if necessary. Please consider using the following local operators: (Inclusion of this number doesn't represent any endorsement of the taxi firm)

**Loddon Cars**  
0118 932 1321

**Twyford Executive Cars**  
0118 903 4903

**Sky Taxis**  
0118 934 3536



**Further information about all onward travel**

<b>Local Cycle Info</b> wokingham.gov.uk For more information about cycle routes.	<b>National Cycle Info</b> sustrans.org.uk Sustrans is the UK's leading sustainable transport charity.	<b>Bus Times</b> See timetable displays at bus stops. <a href="http://www.traveline.info">www.traveline.info</a> 0871 200 22 33 calls cost 10p per minute plus your phone company's access charge	<b>NextBuses</b>  <b>Find the bus times for your stop.</b> Search for a bus stop by entering a postcode, street & town or a stop name & town.	<b>PlusBus</b> <a href="http://plusbus.info">plusbus.info</a> A discount price "bus pass" that you buy with your train ticket. It gives you unlimited bus travel around your chosen town, on participating buses.
---	--	---	--	---

**National Rail Enquiries**

<b>Online</b> nationalrail.co.uk	<b>NRE App</b> Free National Rail Enquiries app for iOS and Android	<b>Social Media</b> facebook.com/nationalrailenq @nationalrailenq	<b>Alert Me</b> You can sign up to Alert Me messages on the National Rail Enquiries website where you can receive train and platform notifications directly to your smart phone. nationalrail.co.uk/alertme	<b>Contact Centre</b> 03457 48 49 50 Calls cost no more than calls to geographic numbers (01 or 02) and may be recorded.	<b>PlusBike</b> nationalrail.co.uk/plusbike For more information.
-------------------------------------	--	---	---	--	---



This poster shows details of popular destinations and main, frequent bus routes. Additional services may run, so please check with Traveline or see posters at local bus stops. Whilst considerable care has been taken to ensure the information contained on this poster is correct and accurate, National Rail cannot accept responsibility for any loss or inconvenience caused by any errors or omissions, or for loss, damage, injury or inconvenience relating to the cancellation, alteration, delay or diversion of a service. For any feedback, please e-mail comments@onwardtravelposters.com

Scan this code with your mobile for full station information.